

UNITED STATES
DEPARTMENT OF INTERIOR
BUREAU OF LAND MANAGEMENT

FORM APPROVED
OMB No. 1004-0135
Expires: November 30, 2000

SUNDRY NOTICE AND REPORTS ON WELLS

Do not use this form for proposals to drill or to deepen or reentry an abandoned well. Use Form 3160-3 (APD) for such proposals

5. Lease Serial No.
SF-078769
6. If Indian, Allottee or Tribe Name
7. If Unit or CA/Agreement, Name and/or No.
8. Well Name and No.
ROSA #168A
9. API Well No.
30-039-26388
10. Field and Pool, or Exploratory Area
BLANCO MESA VERDE
11. County or Parish, State
RIO ARRIBA, NM

SUBMIT IN TRIPLICATE

1. Type of Well
Oil Well ☒ Gas Well ☐ Other ☐
2. Name of Operator
WILLIAMS PRODUCTION COMPANY
3. Address and Telephone No.
PO BOX 3102 MS 37-2, TULSA, OK 74101 (918) 573-6254
4. Location of Well (Footage, Sec., T., R., M., or Survey Description)
930' FNL & 1625' FEL, NW/4 NE/4, SEC 28-31N-05W

12. CHECK APPROPRIATE BOX(ES) TO INDICATE NATURE OF NOTICE, REPORT, OR OTHER DATA

TYPE OF SUBMISSION

- ☒ Notice of Intent
- ☐ Subsequent Report
- ☐ Final Abandonment

TYPE OF ACTION

- Temporary*
☒ Abandonment
☐ Recompletion
☐ Plugging Back
☐ Casing Repair
☐ Altering Casing
Other _____

- ☐ Change of Plans
☐ New Construction
☐ Non-Routine Fracturing
☐ Water Shut-Off
☐ Conversion to Injection
☐ Dispose Water
(Note: Report results of multiple completion on Well Completion or Recompletion Report and Log form.)

13. Describe Proposed or Completed Operations (Clearly state all pertinent details, and give pertinent dates, including estimated date of starting any proposed work. If well is directionally drilled, give subsurface locations and measured and true vertical depths for all markers and zones pertinent to this work.)*

Temporarily
Williams Production Company, LLC proposes to Plug & Abandon the ROSA 168A, per attached procedure.

Work will begin as soon as approval is received.

14. I hereby certify that the foregoing is true and correct

Signed

Stephen K. Mason

Title

Sr. Engineer

Date October 18, 2002

(This space for Federal or State office use)

Approved by **Original Signed: Stephen Mason**

Title

Date 10/18/02

Conditions of approval, if any:

Title 18 U.S.C. Section 1001, makes it a crime for any person knowingly and willfully to make to any department or agency of the United States any false, fictitious or fraudulent statements or representations as to any matter within its jurisdiction.

NMOC



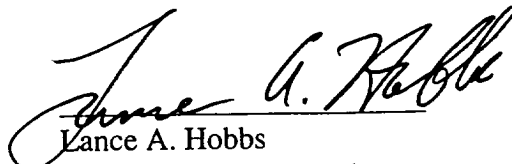
Rosa #168A
NE/4 Sec 28, T31N, R5W
October 16, 2002

T&A

Purpose: ~~Plug and abandon~~ Rosa #168A Mesa Verde well. Tubing in the #168A is currently landed at 3864'. DO NOT pull tubing higher than 3650'.

NOTE: The 7" intermediate casing is parted. Downhole pictures indicate that no amount of dressing will allow a packer, plug, or retainer to enter the lower portion of the casing. Cement plugs will be pumped from liner top (3888').

1. MIRUSU on Rosa #168A. Hold safety meeting. Blow down well. If necessary, kill well with produced water. NDWH. NUBOP. TIH and tag liner top. Pull up tubing 1' (one foot.) Shut well in overnight. Shut in Rosa #266 overnight, as well
2. RU BJ Services. Establish circulation down tubing. Pump 40 bbls class III cement + 1% CaCl(1.38 ft³/sack.). DO NOT PUMP EXCESS CEMENT. Flush tubing with 15 bbls produced water. If any change in weight is noted on tubing string, stop cementing and immediately flush tubing.
3. WOC eight hours. Pull on tubing. If tubing is FREE, pump 10 bbls class III cement (1.38 ft³/sack). DO NOT PUMP EXCESS CEMENT. Flush tubing with 15 bbls produced water. SWION. Repeat until tubing is no longer free.
4. IF tubing is not free. Free point tubing. Chemical cut tubing at free point. Raise tubing 1' (one foot) and pump 3 bbls of class III cement + 1% CaCl (1.38 ft³/sack). DO NOT PUMP EXCESS CEMENT. Flush tubing with 14.5 bbls produced water. TOH with three joints of tubing. SWION.
5. TIH and tag cement. Note cement top.
6. Land remaining tubing @ 3500'.
7. NDBOP. NUWH. RDMOL.
8. *Evaluate for sidetrack to MV or P&A. Procedure will be submitted by 6/1/03.*


Lance A. Hobbs
Senior Production Engineer

ROSA UNIT #168A
BLANCO MESAVERDE

Spud date: 8/01/00

Completed: 9/12/00

Location:

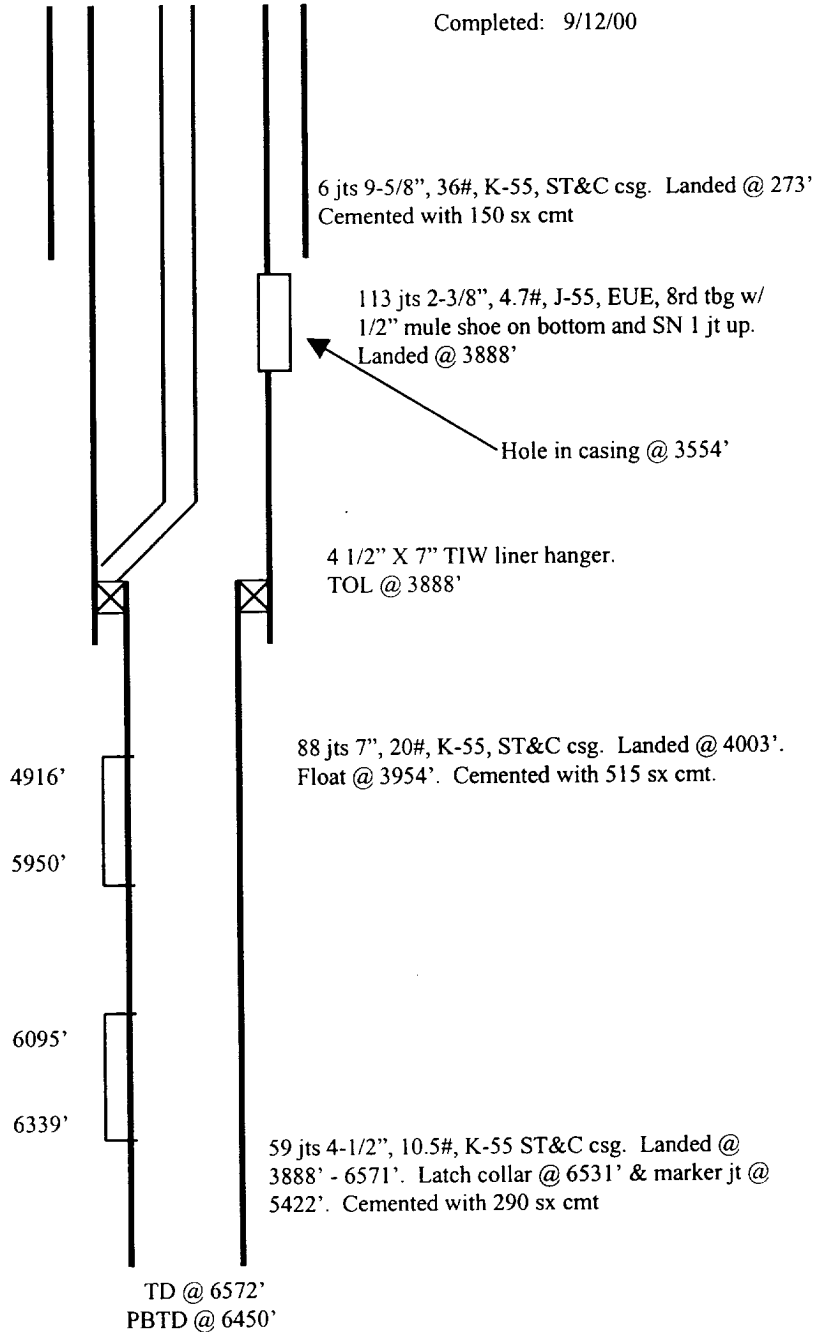
930' FNL and 1625' FEL
NW/4 NE/4 Sec 28(B), T31N R05W
Rio Arriba, New Mexico
Elevation: 6785' GR

<u>Top</u>	<u>Depth</u>
Pictured Cliffs	3700'
Lewis	3943'
CliffHouse	5858'
Menefee	5900'
Point Lookout	6113'

STIMULATION

CliffHouse/Menefee: 4916' - 5950'
(27, 0.38" holes) Frac with 78,000#
20/40 sand in 1900 bbls slick water.

Point Lookout: 6095' - 6339' (33,
0.38" holes) Frac with 81,000# 20/40
sand in 2006 bbls slick water.



Hole Size	Casing	Cement	Volume	Top Of CMT
12-1/4"	9-5/8", 36#	150 sx	209 cu. ft.	surface
8-3/4"	7", 20#	515 sx	1007 cu. ft.	surface
6-1/4"	4-1/2", 10.5#	290 sx	423 cu. ft.	3888'