

UNITED STATES
DEPARTMENT OF THE INTERIOR
BUREAU OF LAND MANAGEMENT

ROW/APD

FORM APPROVED
Budget Bureau No 1004-0136
Expires February 28, 1995

APPLICATION FOR PERMIT TO DRILL OR DEEPEN

1a. Type of Work

DRILL ☒

DEEPEN ☐

b. Type of Well

Oil Well ☐

Gas Well ☒

Other ☐

Single Well ☒

Multiple Zone ☐

2. Name of Operator

Williams Production Company

3. Address and Telephone No

P.O. Box 3102, MS 37-2, Tulsa, OK. 74101

4. Location of Well (Footages)

At Surface

880' FNL 260' FWL, NWNW

proposed prod. zone

5. Lease Designation and Serial No.
SF-078764

6. If Indian, Alutstee or Tribe Name

7. If Unit or CA, Agreement Designation

Rosa Unit

8. Well Name and No.

W-22A

9. API Well No.

30-039-26390

10. Field and Pool, or Exploratory Area

Blanco - MV

11. Sec., T., R., M., or BLK.
and Survey or Area

Section 18, T31N, R5W

14. Distance in Miles and Directions from Nearest Town or Post Office

Approximately 20.3 miles northeast of Navajo Dam Post Office (straight line)

12. County or Parish
Rio Arriba

13. State
NM

15. Distance from Proposed Location to Nearest
Property or Lease Line, Ft 260'

16. No. of Acres in Lease

2507.3 acres

17. No. of Acres Assigned to This Well

231.89 acres N/2

18. Distance from Proposed Location to Nearest Well Drilling, Completed,
or Applied for, on this Lease, FT

516'

19. Proposed Depth

6287' KB

20. Rotary or Cable Tools

Rotary

21. Elevations (Show whether DF, RT, GR, etc)

6515' GR

22. Approximate Date Work will Start

April 1, 2000

PROPOSED CASING AND CEMENTING PROGRAM

| SIZE OF HOLE | SIZE & GRADE OF CASING | WEIGHT PER FOOT | SETTING DEPTH | QUANTITY OF CEMENT |
|--------------|------------------------|-----------------|---------------|---|
| 12-1/4" | 9-5/8" | 36# | 250' | 130 sx-176 cu ft Type III |
| 8-3/4" | 7" | 20# | 3852' | 440 sx-916 cu ft Lite 175 sx-242 Cu ft-Type III |
| 6-1/4" | 4-1/2" | 10.5# | 3752' - 6287' | 80 sx-116-cuft 190 sx-276cuft Poz/Class H 50/50 |

Williams Exploration & Production proposes to drill a vertical well to develop the Mesa Verde Formation at the above described location, in accordance with the attached Operation and Surface Use plans. **The surface is under the jurisdiction of the Bureau of Land Management.** Moore Anthropological Research of Aztec, NM, has surveyed the proposed location for Cultural Resources. The report has been submitted to your office for review.

This APD also is serving as an application to obtain BLM road and pipeline on lease rights-of-way. This well will require the construction of a new 800-foot access road (see Pipeline & Well Plats #3 and #4). The proposed 516-foot long pipeline would tie into the Williams Gathering System on the Rosa Unit Well #227 (see the attached Pipeline Plat Map # 4).

I, Steve Nelson, hereby propose to deepen, give present productive zone and proposed new productive zone.
Signed Steve Nelson Title Agent

COPIES: BLM+4, WELL FILE+1
Date February 24, 2000

(This space for Federal or State office use)

Permit No.

Approval Date

Application approval does not warrant or certify that applicant holds legal or equitable title to those rights in the subject lease which would entitle the applicant to conduct operations thereon.

Conditions of approval, if any

APPROVED BY:

/s/ Charlie Beecham

TITLE

DATE

APR 26 2000

01/27/2000 15:39 5053265650

NCE SURVEYS

PAGE 02

District I
PO Box 1980, Hobbs, NM 88241-1980

District II
PO Drawer DD, Artesia, NM 88211-0719

District III
1000 Rio Brazos Rd., Aztec, NM 87410

District IV
PO Box 2088, Santa Fe, NM 87504-2088

State of New Mexico
Energy, Minerals & Natural Resources Department

OIL CONSERVATION DIVISION
PO Box 2088
Santa Fe, NM 87504-2088

Form C-102
Revised February 21, 1994
Instructions on back
Submit to Appropriate District Office
State Lease - 4 Copies
Fee Lease - 3 Copies

☐ AMENDED REPORT

WELL LOCATION AND ACREAGE DEDICATION PLAT

| | | | |
|------------------------------------|--|----------------------------|----------------------------------|
| *API Number 30-039-26390 | | *Pool Code 72319 | *Pool Name Blanco - MV |
| *Property Code 17033 | *Property Name ROSA UNIT | | *Well Number 22A |
| *GRID No. 120782 | *Operator Name WILLIAMS PRODUCTION COMPANY | | *Elevation 6515' |

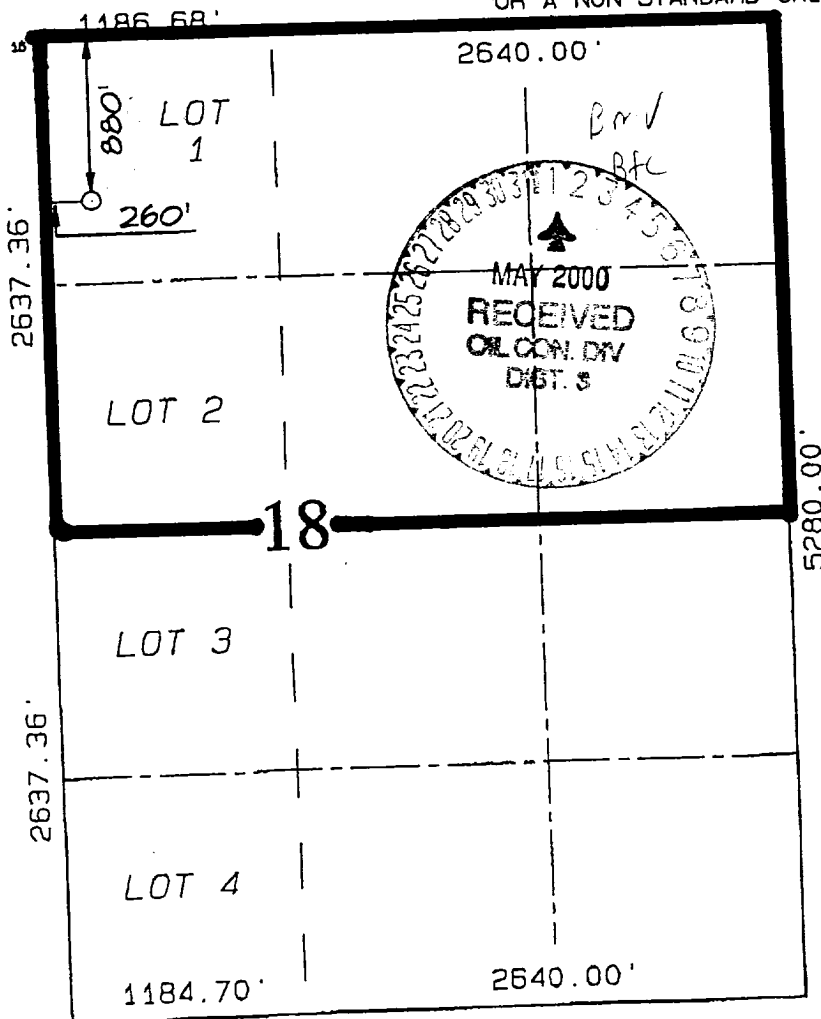
10 Surface Location

| UL or lot no. | Section | Township | Range | Lot Idn | Feet from the | North/South line | Feet from the | East/West line | County |
|---------------|-----------|------------|-----------|---------|---------------|------------------|---------------|----------------|-------------------|
| C | 18 | 31N | 5W | | 880 | NORTH | 260 | WEST | RIO ARriba |

11 Bottom Hole Location If Different From Surface

| UL or lot no. | Section | Township | Range | Lot Idn | Feet from the | North/South line | Feet from the | East/West line | County |
|---|---------|--------------------------------|-------|-----------------------------------|---------------|------------------|---------------|----------------|--------|
| | | | | | | | | | |
| 12 Dedicated Acres 231.89 N/2 | | 13 Joint or Infill I | | 14 Consolidation Code U | | 15 Order No. | | | |

NO ALLOWABLE WILL BE ASSIGNED TO THIS COMPLETION UNTIL ALL INTERESTS HAVE BEEN CONSOLIDATED OR A NON-STANDARD UNIT HAS BEEN APPROVED BY THE DIVISION



OPERATOR CERTIFICATION

I hereby certify that the information contained herein is true and complete to the best of my knowledge and belief.

Steve Nelson
Signature

Steve Nelson
Printed Name

Agent, Nelson Consulting
Title

February 24, 2000
Date

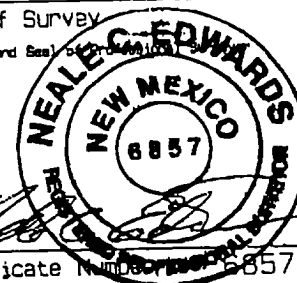
18 SURVEYOR CERTIFICATION

I hereby certify that the well location shown on this plat was plotted from field notes of actual surveys made by me or under my supervision, and that the same is true and correct to the best of my belief.

JANUARY 21, 2000

Date of Survey

Signature and Seal of Surveyor



Certificate Number 8857

WILLIAMS PRODUCTION COMPANY ROSA UNIT #22A

880' FNL & 260' FNL, SECTION 18, T31N, R5W, N.M.P.M.
RIO ARriba COUNTY, NEW MEXICO

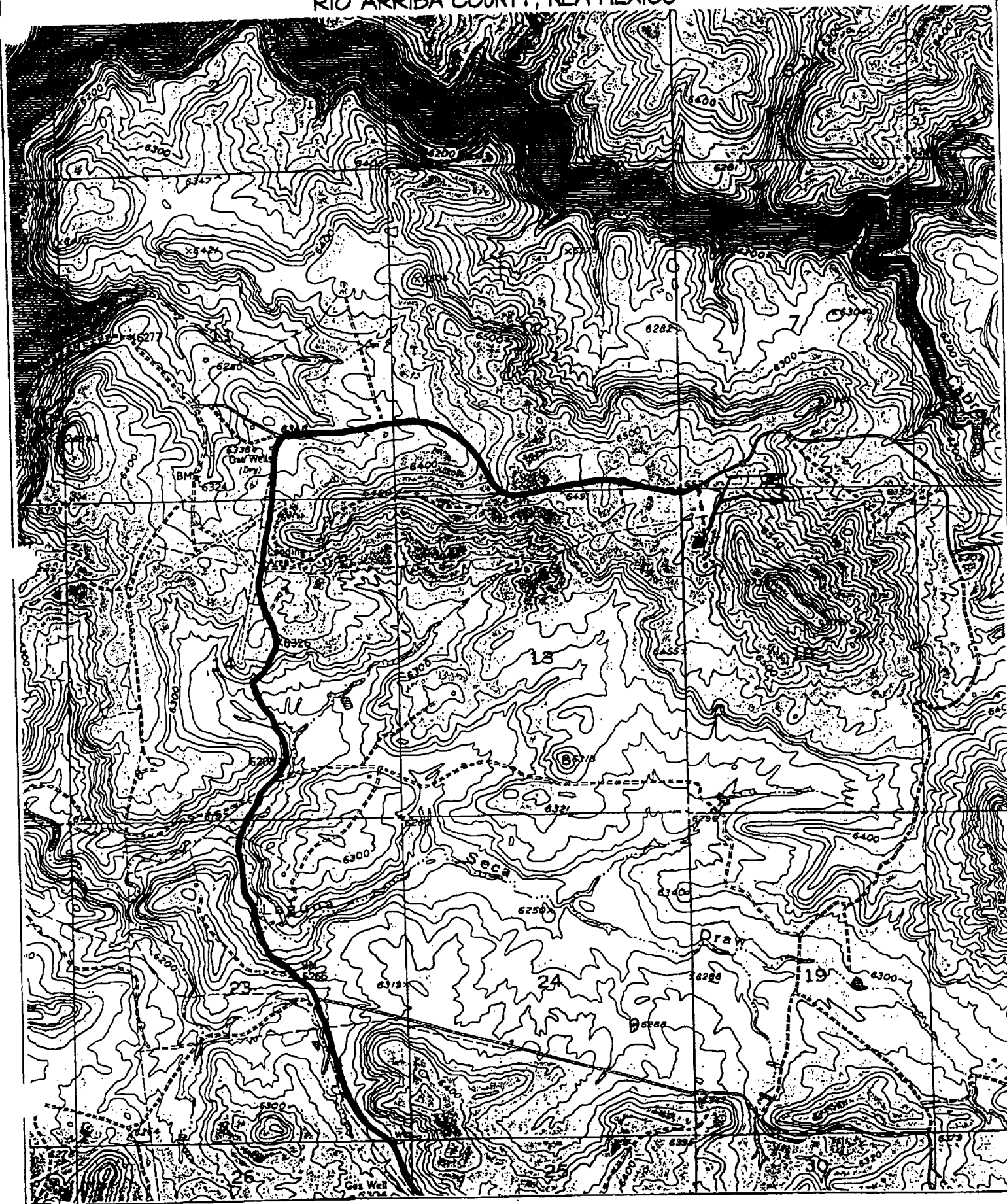
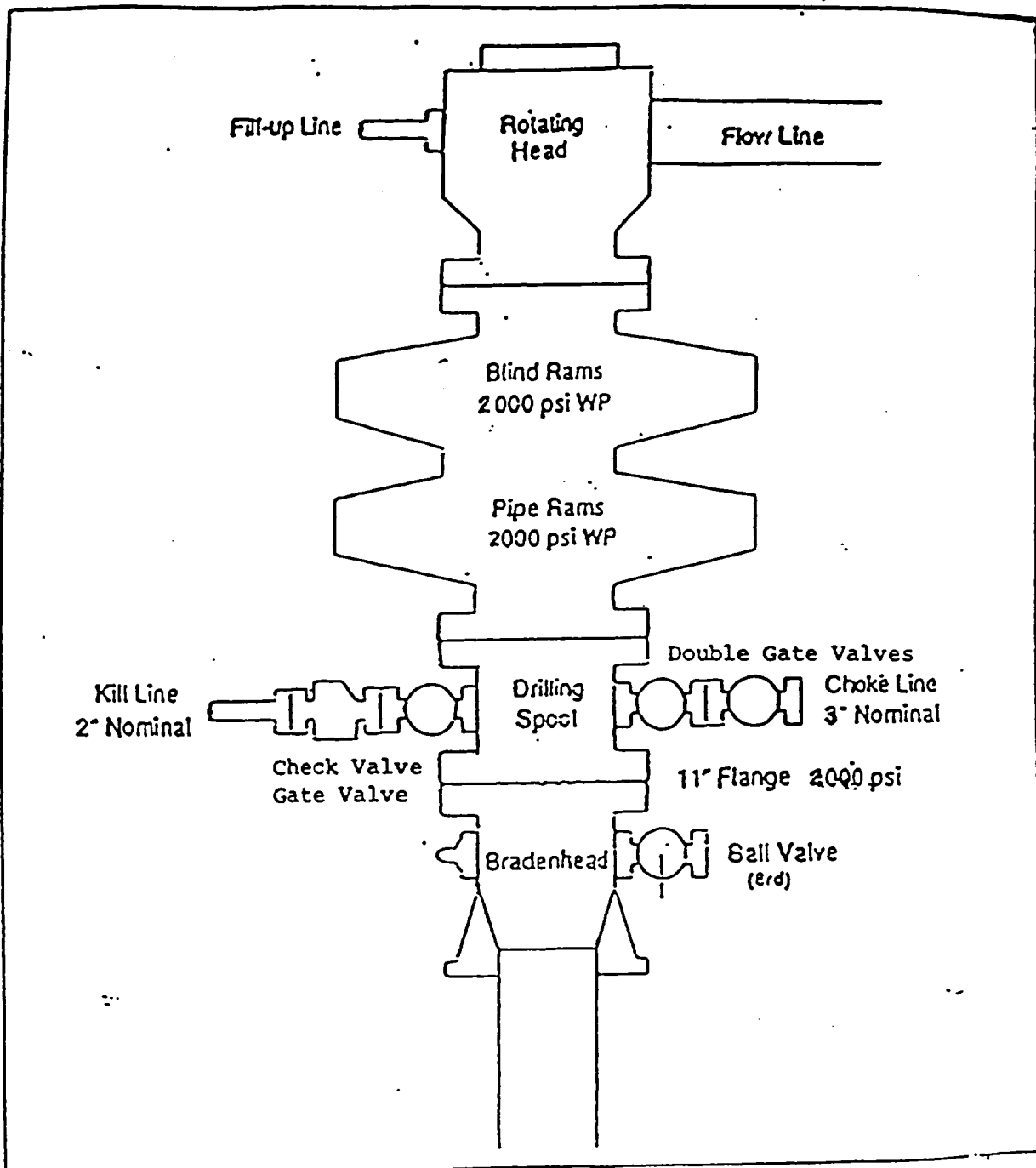


EXHIBIT 1

BOP STACK ARRANGEMENT



All ram type preventers and related equipment will be hydraulically tested at nipple-up and after any use under pressure to 1500 psi. The blind rams will be hydraulically activated and checked for operational readiness each time pipe is pulled out of the hole. All checks of the BOP stack and equipment will be noted on the daily drilling report. The BOP equipment will include a kelly cock with handle, floor safety valve with change overs for each tool joint in the string, and choke manifold all rated to 2000 psi.