



UNITED STATES

DEPARTMENT OF THE INTERIOR
BUREAU OF LAND MANAGEMENT

ROW/APD

FORM APPROVED
Budget Bureau No. 1004-9136
Expires: February 28, 1995

APPLICATION FOR PERMIT TO DRILL OR DEEPEN

1a. Type of Work

DRILL ☒

DEEPEN ☐

070 FARMINGTON, NM

b. Type of Well

Oil Well ☐

Gas Well ☒

Other ☐

Single Well ☒

Multiple Zone ☐

2. Name of Operator

Williams Production Company

3. Address and Telephone No

P.O. Box 3102, MS 37-2, Tulsa, OK. 74101

4. Location of Well (Footages)

At Surface

2120' FNL 2015' FEL, SWNE

proposed prod. zone

14. Distance in Miles and Directions from Nearest Town or Post Office

Approximately 25.1 miles east of Navajo Dam Post Office (straight line)

5. Lease Designation and Serial No.
SF-078889

6. If Indian, Allottee or Tribe Name

7. If Unit or CA, Agreement Designation
Rosa Unit

8. Well Name and No.
Rosa Unit #354

9. API Well No.

30-039-26412

10. Field and Pool, or Exploratory Area
Basin Fruitland Coal

11. Sec., T., R., M., or BLK.
and Survey or Area

G Section 19, T31N, R4W

12. County or Parish
Rio Arriba

13. State
NM

15. Distance from Proposed Location to Nearest

Property or Lease Line, Ft 2015'

16. No. of Acres in Lease

2505.68. acres

17. No. of Acres Assigned to This Well

320 acres, E/2

18. Distance from Proposed Location to Nearest Well Drilling, Completed, or Applied for, on this Lease, FT

2500'

19. Proposed Depth

3504 KB

20. Rotary or Cable Tools

Rotary

21. Elevations (Show whether DF, RT, GR, etc)

6634' GR

22. Approximate Date Work will Start

April 1, 2000

PROPOSED CASING AND CEMENTING PROGRAM

SIZE OF HOLE	SIZE & GRADE OF CASING	WEIGHT PER FOOT	SETTING DEPTH	QUANTITY OF CEMENT
12-1/4"	9-5/8"	36#	250'	130 sx-176 cu ft Class Type 3
8-3/4"	7"	20#	3410'	460 sx-955 cu ft Lite 65/35 50 sx-70 Cu ft-Class Type 3I
6-1/4"	5-1/2"	15.5#	3310' - 3504'	Open hole completion, no cement

Williams Exploration & Production proposes to drill a vertical well to develop the Basin Fruitland Coal Formation in the described location above, and in accordance with the attached Operation and Surface Use plans. The surface is under the jurisdiction of the U.S. Forest Service, Carson National Forest, Jicarilla Ranger District. Moore Anthropological Research of Aztec, NM has surveyed the proposed location for Cultural Resources, and the report has been submitted to the Forest Service for review.

This proposed well would utilize an old abandoned access, road but for technical purposes would be a new road construction of 1200 feet long (see Pipeline & Well Plats #3 and #4). The proposed 1897-foot long pipeline would tie into Williams Gathering System on the Rosa Unit Well #43 (see the attached Pipeline Plat Map #4).

This drilling is subject to technical and procedural review pursuant to 43 CFR 3105.3 and appeal pursuant to 43 CFR 3105.4.

DRILLING OPERATIONS AUTHORIZED ARE
SUBJECT TO COMPLIANCE WITH ATTACHED
"GENERAL REQUIREMENTS"

HOLD C104 FOR NSL

I, Steve Nelson, hereby propose to deepen. If proposal to deepen, give present productive zone and proposed new productive zone.
Signed Steve Nelson Title Agent

COPIES: BLM+4, WELL FILE+1
Date March 21, 2000

(This space for Federal or State office use)

Permit No.

Approval Date

9/6/00

Application approval does not warrant or certify that applicant holds legal or equitable title to those rights in the subject lease which would entitle the applicant to conduct operations thereon.
Conditions of approval, if any

9/6/00

District I
PO Box 1980, Hobbs, NM 88241-1980

District II
PO Drawer DD, Artesia, NM 88211-0719

District III
1000 Rio Brazos Rd., Aztec, NM 87410

District IV
PO Box 2088, Santa Fe, NM 87504-2088

State of New Mexico
Energy, Minerals & Natural Resources Department

OIL CONSERVATION DIVISION

PO Box 2088
Santa Fe, NM 87504-2088

Form C-102
Revised February 21, 1994
Instructions on back
Submit to Appropriate District Office
State Lease - 4 Copies
Fee Lease - 3 Copies

☐ AMENDED REPORT

070 PARKINGTON, NM

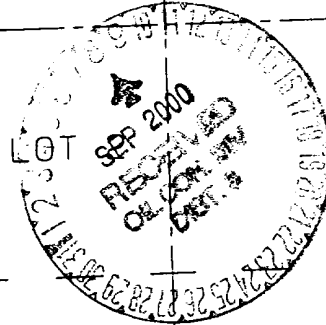
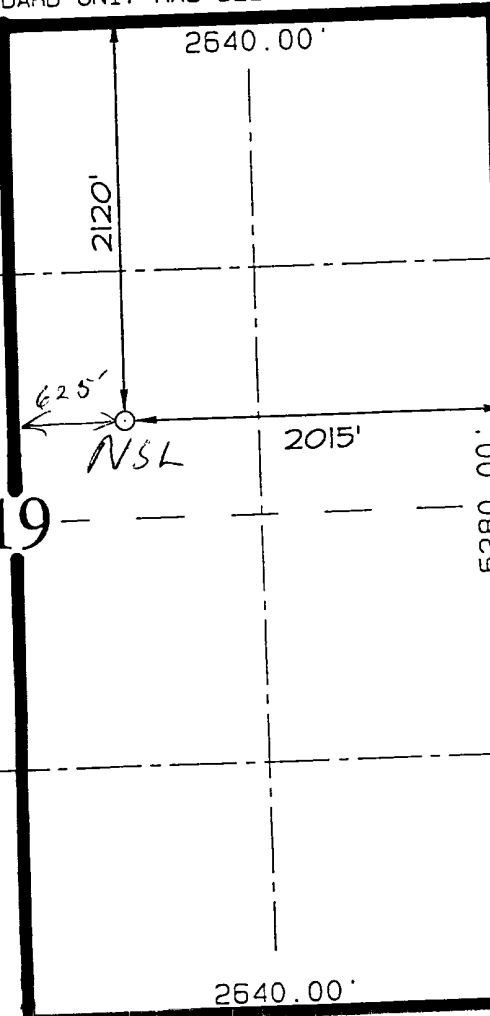
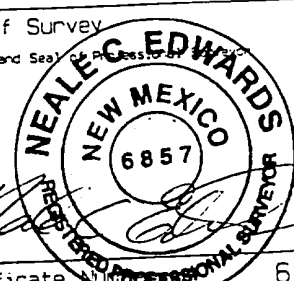
WELL LOCATION AND ACREAGE DEDICATION PLAT

*API Number 30-039-26412		*Pool Code 71629	*Pool Name Basin Fruitland Coal	
*Property Code 17033		*Property Name ROSA UNIT		*Well Number 354
*OGRID No. 120782		*Operator Name WILLIAMS PRODUCTION COMPANY		*Elevation 6634'

10 Surface Location									
UL or lot no.	Section	Township	Range	Lot Idn	Feet from the	North/South line	Feet from the	East/West line	County
G	19	31N	4W		2120	NORTH	2015	EAST	RIO ARriba

11 Bottom Hole Location If Different From Surface									
UL or lot no.	Section	Township	Range	Lot Idn	Feet from the	North/South line	Feet from the	East/West line	County
12 Dedicated Acres 320 - E/2		13 Joint or Infill J		14 Consolidation Code U		15 Order No.			

NO ALLOWABLE WILL BE ASSIGNED TO THIS COMPLETION UNTIL ALL INTERESTS HAVE BEEN CONSOLIDATED OR A NON-STANDARD UNIT HAS BEEN APPROVED BY THE DIVISION

	15 1096.26'	1320.00'	2640.00'		17 OPERATOR CERTIFICATION I hereby certify that the information contained herein is true and complete to the best of my knowledge and belief. Signature: <u>Steve Nelson</u> Printed Name: <u>Steve Nelson</u> Agent, Nelson Consulting Title: <u>March 21, 2000</u> Date: <u>March 21, 2000</u>	
	LOT 1					18 SURVEYOR CERTIFICATION I hereby certify that the well location shown on this plat was plotted from field notes of actual surveys made by me or under my supervision, and that the same is true and correct to the best of my belief. JULY 8, 1999 Date of Survey: <u>JULY 8, 1999</u> Signature and Seal: 
	LOT 3					Certificate: <u>NEALE C. EDWARDS</u> 6857
	LOT 4					

Rosa #354
Operation Prognosis
Page #2

3. PRODUCTION LINER: 5-1/2" liner with notched collar on bottom.

C. CEMENTING:

1. SURFACE: Use 130sx (176 cu.ft.) of class "Type III" with 2% CaCl₂ and 1/4# of cello-flake/sk (Yield = 1.39 cu.ft./sk, Weight = 14.5 #/gal.). Use 125% excess to circulate the surface. WOC 12 hours. Test to 1500#.

2. INTERMEDIATE: Lead - 460sx (955 cu.ft.) of class "Premium Lite" 65/35 poz with 8% gel, 1% CaCl₂, and 1/4# cello-flake/sk (Yield = 2.09 cu.ft./sk, Weight = 12.1 #/gal.). Tail - 50sx (70 cu.ft.) of class "Type III" with, 1% CaCl₂, and 1/4# cello-flake/sk (Yield = 1.39 cu.ft./sk, Weight = 14.5#/gal.). Use 100% excess in lead and tail to circulate to surface. Total volume = 1025 cu.ft. WOC 12 hours. Run a temperature survey after 8 hours if cement is not circulated. Test to 1500#.

3. PRODUCTION LINER: Open hole completion. No cement.

IV COMPLETION

A. PRESSURE TEST


Pressure test 7" casing to 3300# for 15 minutes.

B. STIMULATION

Cavitate Well with reciprocation and rotation. Surge wells with water and air and then flow back to pit. Cavitate for 2 to 3 weeks. Maximum pressure not expected to exceed 2,000 psi.

C. RUNNING TUBING

1. Fruitland Coal: Run 2-3/8", 4.6#, J-55, EUE tubing with a SN (1.375" ID) on top of bottom joint. Land tubing approximately 50' above TD.


Lance A. Hobbs
Engineer, Production & Drilling

file:354Rosa

WILLIAMS PRODUCTION COMPANY ROSA UNIT #354

2120' FNL & 2015' FEL, SECTION 19, T31N, R4W, N.M.P.M.
RIO ARriba COUNTY, NEW MEXICO

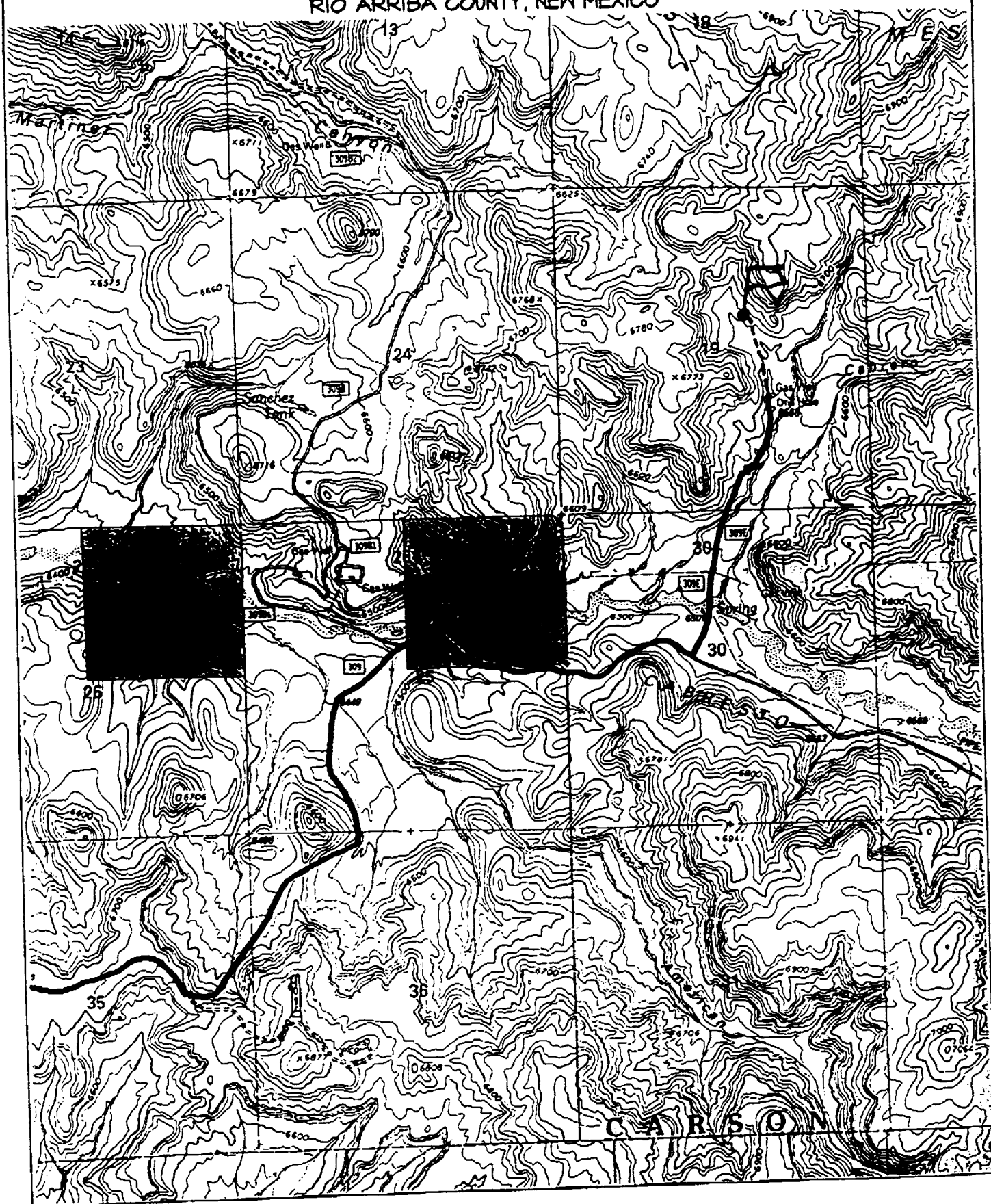
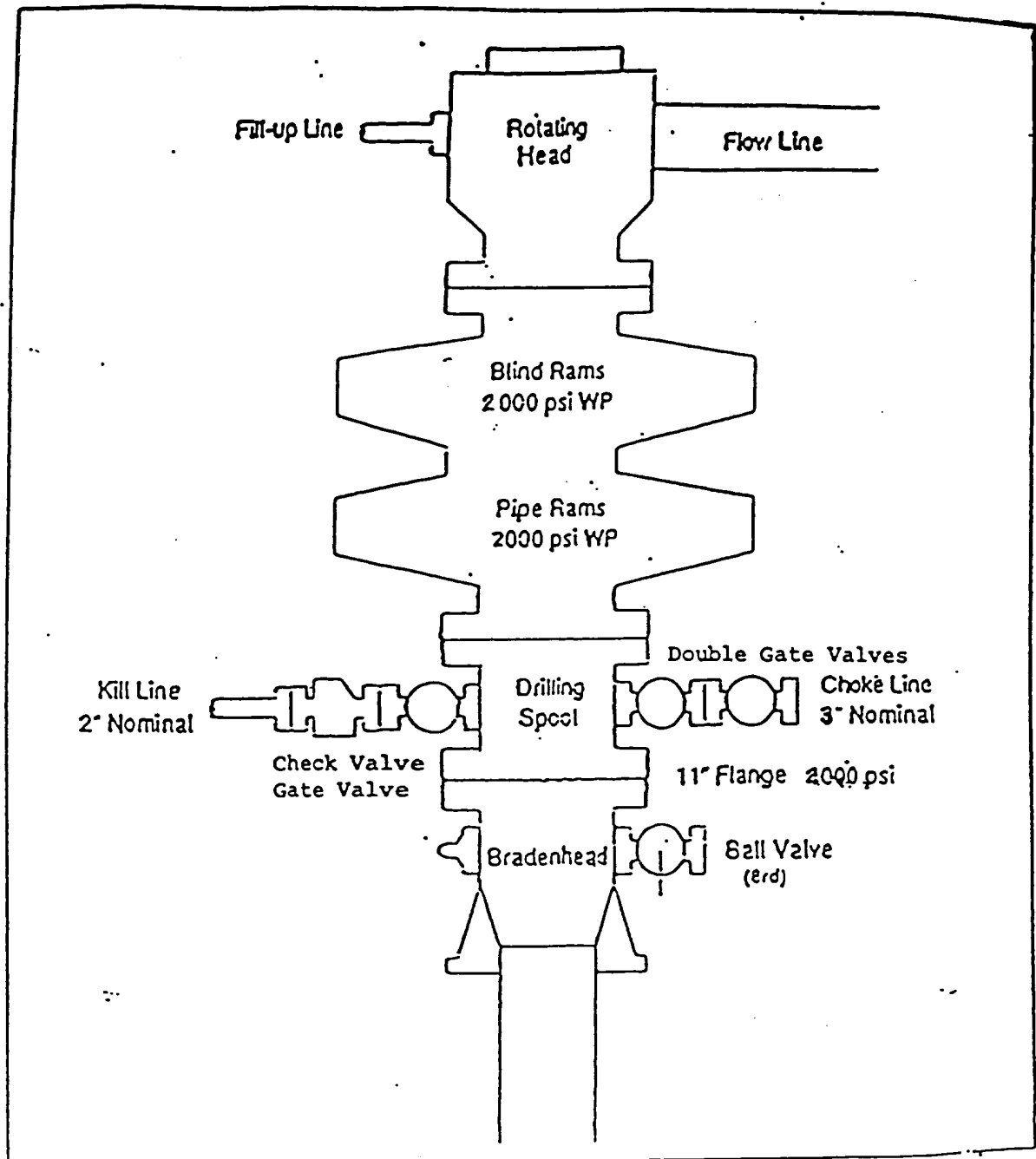


EXHIBIT 1

BOP STACK ARRANGEMENT



All ram type preventers and related equipment will be hydraulically tested at nipple-up and after any use under pressure to 1500 psi. The blind rams will be hydraulically activated and checked for operational readiness each time pipe is pulled out of the hole. All checks of the BOP stack and equipment will be noted on the daily drilling report. The BOP equipment will include a kelly cock with handle, floor safety valve with change overs for each tool joint in the string, and choke manifold all rated to 2000 psi.