

UNITED STATES
DEPARTMENT OF THE INTERIOR
BUREAU OF LAND MANAGEMENT

ROW/APD

FORM APPROVED
Budget Bureau No. 1004-0136
Expires: February 28, 1995

APPLICATION FOR PERMIT TO DRILL OR DEEPEN

1a. Type of Work

DRILL ☒DEEPEN ☐

b. Type of Well

Oil Well ☐Gas Well ☒Other ☐Single Well ☒Multiple Zone ☐

2. Name of Operator

Williams Production Company

3. Address and Telephone No.

P.O. Box 3102, MS 37-2, Tulsa, OK. 74101

4. Location of Well (Footages)

At Surface

485' FSL 1125' FEL, SESE

proposed prod. zone

5. Lease Designation and Serial No.
SF-078765

6. If Indian, Allottee or Tribe Name

7. If Unit or CA, Agreement Designation
Rosa Unit8. Well Name and No.
RU-#12B

9. API Well No.

30-039-26555

10. Field and Pool, or Exploratory Area
Blanco-MV11. Sec., T., R., M., or BLK.
and Survey or Area

Section 15, T31N, R6W

14. Distance in Miles and Directions from Nearest Town or Post Office

Approximately 18.7 miles northeast of Navajo Dam Post Office (straight line)

12. County or Parish
Rio Arriba13. State
NM

15. Distance from Proposed Location to Nearest

Property or Lease Line, Ft 485'

16. No. of Acres in Lease

2460.23 acres

17. No. of Acres Assigned to This Well

320 acres, E/2

18. Distance from Proposed Location to Nearest Well Drilling, Completed,

or Applied for, on this Lease, FT 1400'

19. Proposed Depth

5891' KB

20. Rotary or Cable Tools

Rotary

21. Elevations (Show whether DF, RT, GR, etc)

6144' GR

22. Approximate Date Work will Start

April 1, 2001

PROPOSED CASING AND CEMENTING PROGRAM

SIZE OF HOLE	SIZE & GRADE OF CASING	WEIGHT PER FOOT	SETTING DEPTH	QUANTITY OF CEMENT
12-1/4"	9-5/8"	36#	500'	255 sx-352 cu ft Type III Circ.
8-3/4"	7"	20#	3446'	385 sx-806 cu ft Type III Circ.
6-1/4"	4-1/2"	10.5#	3346'-5891'	165sx-230 cu ft Type III Circ.
				80sx-116 cu ft 190sx-276 cu ft Class H + 50/50 poz 100' in 7"

Williams Production Co. proposes to drill a vertical well to develop the Blanco Mesa Verde Formation in the described location above, and in accordance with the attached Operation and Surface Use plans. **The surface is under the jurisdiction of the Bureau of Reclamation (Durango). The minerals are Federal.** Independent Contract Archaeology has surveyed the proposed location for Cultural Resources, and the report has been submitted to the BLM for review.

This proposed well would not require a new access road (see Pipeline & Well Plats #3 and #4). The proposed 1342-foot long pipeline would follow an existing gas field road and would tie into Williams Gas Gathering System on the Rosa Unit #16B (see the attached Pipeline Plat Map # 4).

THE ABOVE INFORMATION IS FOR INFORMATION ONLY AND DOES NOT CONSTITUTE A GUARANTEE OF ANY KIND. THE BUREAU OF LAND MANAGEMENT IS NOT RESPONSIBLE FOR THE ACCURACY OF THE INFORMATION PROVIDED BY THE APPLICANT.

ALL OPERATIONS AUTHORIZED ARE SUBJECT TO THE ATTACHED WITH ATTACHED REQUIREMENTS

I, Steve Nelson, hereby certify that the information provided in this application is true and correct.

Signed

Steve Nelson

Title Agent

COPIES: BLM+4, WELL FILE+1

Date November 6, 2000

(This space for Federal or State office use)

Permit No.

Application approval does not warrant or certify that applicant holds legal or equitable title to those rights in the subject lease which would entitle the applicant to conduct operations thereon.

Conditions of approval, if any:

APPROVED BY:

/s/ Lee Otani

TITLE

DATE

Approval Date

7/6/01

District I
PO Box 1980, Hobbs, NM 88241-1980

District II
PO Drawer DD, Artesia, NM 88211-0719

District III
1000 Rio Brazos Rd., Aztec, NM 87410

District IV
PO Box 2088, Santa Fe, NM 87504-2088

State of New Mexico
Energy, Minerals & Natural Resources Department

OIL CONSERVATION DIVISION
PO Box 2088
Santa Fe, NM 87504-2088

Form C-11
Revised February 21, 1991
Instructions on back
Submit to Appropriate District Office
State Lease - 4 Copies
Fee Lease - 3 Copies

☐ AMENDED REPORT

WELL LOCATION AND ACREAGE DEDICATION PLAT

*API Number 30-039-26555		*Pool Code 72319	*Pool Name Blanco Mesavende
*Property Code 17033	*Property Name ROSA UNIT		*Well Number 123
*GRID No. 120782	*Operator Name WILLIAMS PRODUCTION COMPANY		*Elevation 6144'

10 Surface Location

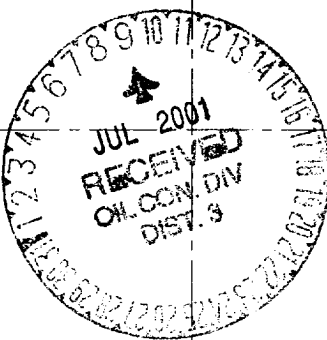
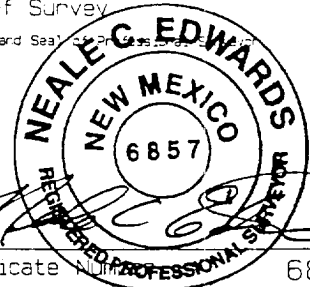
UL or lot no. P	Section 15	Township 31N	Range 6W	Lot Ion	Feet from the 485	North/South line SOUTH	Feet from the 1125	East/West line EAST	County RIO ARriba
--------------------	---------------	-----------------	-------------	---------	----------------------	---------------------------	-----------------------	------------------------	----------------------

11 Bottom Hole Location If Different From Surface

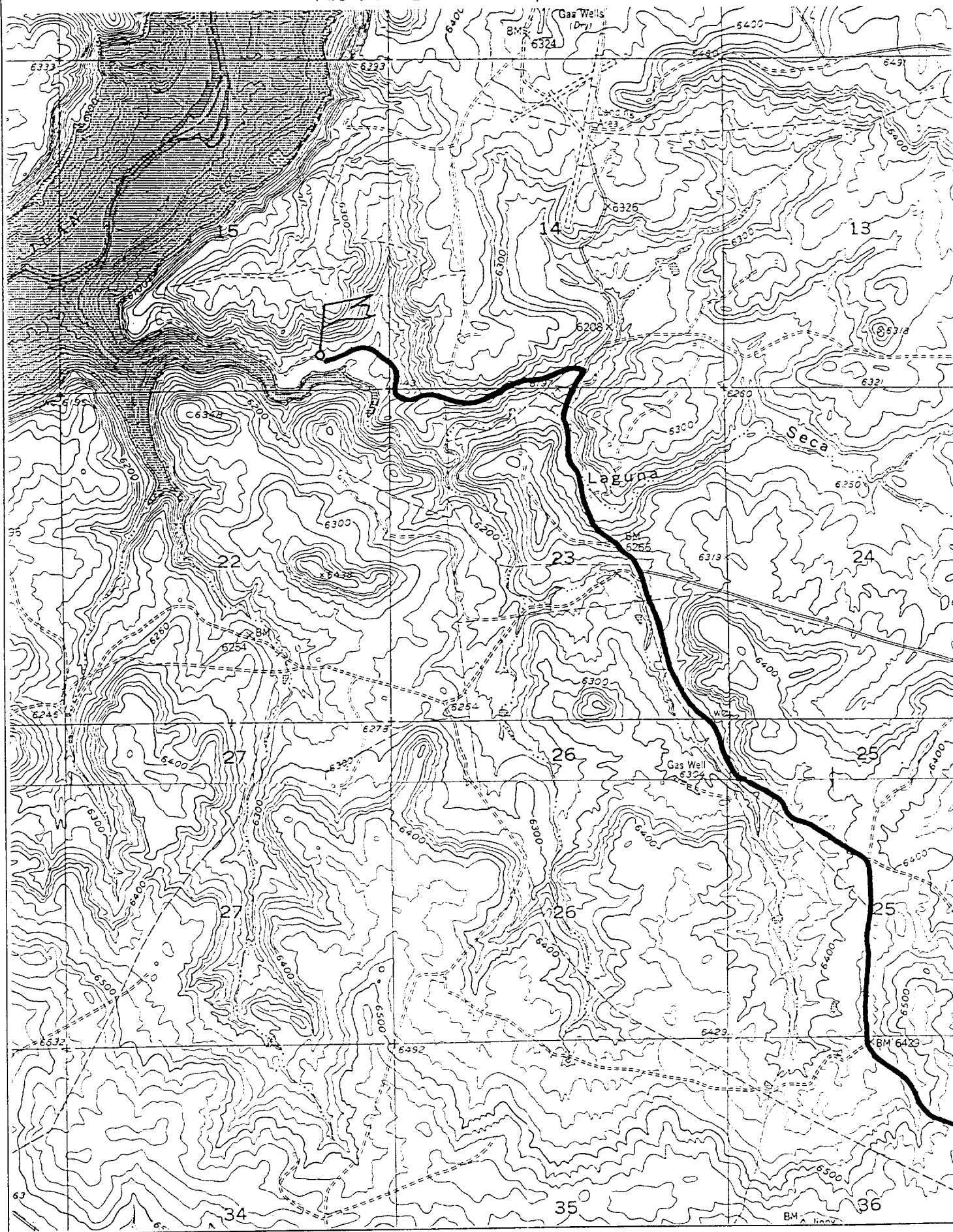
UL or lot no.	Section	Township	Range	Lot Ion	Feet from the	North/South line	Feet from the	East/West line	County
---------------	---------	----------	-------	---------	---------------	------------------	---------------	----------------	--------

12 Dedicated Acres 320 - E/2	13 Joint or Infill I	14 Consolidation Code U	15 Order No.
---------------------------------	-------------------------	----------------------------	--------------

NO ALLOWABLE WILL BE ASSIGNED TO THIS COMPLETION UNTIL ALL INTERESTS HAVE BEEN CONSOLIDATED
OR A NON-STANDARD UNIT HAS BEEN APPROVED BY THE DIVISION

15 LOT 1	5253.60'		17 OPERATOR CERTIFICATION I hereby certify that the information contained herein is true and complete to the best of my knowledge and belief. Signature: <u>Steve Nelson</u> Printed Name: <u>Steve Nelson</u> Title: <u>Agent, Nelson Consulting</u> Date: <u>November 6, 2000</u>
TRACT 38			18 SURVEYOR CERTIFICATION I hereby certify that the well location shown on this plat was plotted from field notes of actual surveys made by me or under my supervision, and that the same is true and correct to the best of my belief. SEPTEMBER 25, 2000 Date of Survey: <u>SEPTEMBER 25, 2000</u> Signature and Seal: 
5280.00' TRACT 39	LOT 2 15		
TRACT 40	5258.88'		1125' 485'

485' FSL & 1125' FEL, SECTION 15, T31N, R6W, N.M.P.M.
RIO ARRIBA COUNTY, NEW MEXICO



B. FLOAT EQUIPMENT:

1. SURFACE CASING: 9-5/8" notched regular pattern guide shoe. Run (1) standard centralizer on each of the bottom (3) joints of Surface Casing.
2. INTERMEDIATE CASING: 7" cement nose guide shoe with a self-fill insert float. Place float collar one joint above the shoe. Install one Turbulent centralizer on each of the bottom (3) joints and one standard centralizer every (4) joints to the surface casing. Total centralizers = (26) regular and (3) turbulent.
3. PRODUCTION CASING: 4-1/2" whirler type cement nose guide shoe with a latch collar on top of 20" bottom joint. Place marker joint above 5630'. Place one positive standoff turbolizer every other joint. Total turbolizers is 34.

C. CEMENTING:

1. SURFACE: Slurry: 255sx (352 cu.ft.) of "Type III" + 2% CaCl₂ + 1/4 # of cello-flake/sk (Yield = 1.39 cu.ft./sk, Weight = 14.5 #/gal.). The 125% excess should circulate cement to the surface. WOC 12 hours. Test csg to 1500psi.
2. INTERMEDIATE: Lead: 385sx (806 ft³) of "Type III" 65/35 poz + 8% gel + 1% CaCl₂ + 1/4 # cello-flake/sk (Yield = 2.09 ft³/sk, Weight = 12.1 #/gal.). Tail: 165sx (230 ft³) of class "Type III" + 1% CaCl₂ + 1/4 # cello-flake/sk. (Yield = 1.39 ft³/sk, Weight = 14.5#/gal.). The 100% excess in lead and tail should circulate cement to the surface. Total volume = 1103 ft³. WOC 12 hours. Run a temperature survey after 8 hours if cement is not circulated to the surface. Test csg. to 1500psi.
3. PRODUCTION LINER: Lead: 80sx (116 ft³) of Class-H + 50/50 poz + 4 % gel + 0.4% FL-52. (Yield = 1.45 cu.ft./sk, Weight = 13.2 #/gal.). Tail: 190 sx (276 ft³) of Class-H + 50/50 poz + 4 % gel + 0.4% FL-5 + 1/4# celloflake/sk and 4% Phenoseal (Yield = 1.45 ft³/sk, Weight = 13.2 #/gal.). Displace cement at a minimum of 8 BPM. The 50% excess in lead and tail should cover liner top. Total volume 392ft³. WOC 12 hours.

IV COMPLETION

A. CBL

1. Run Cement Bond Log across all intervals to be perforated and find Top of Cement behind all casing strings.

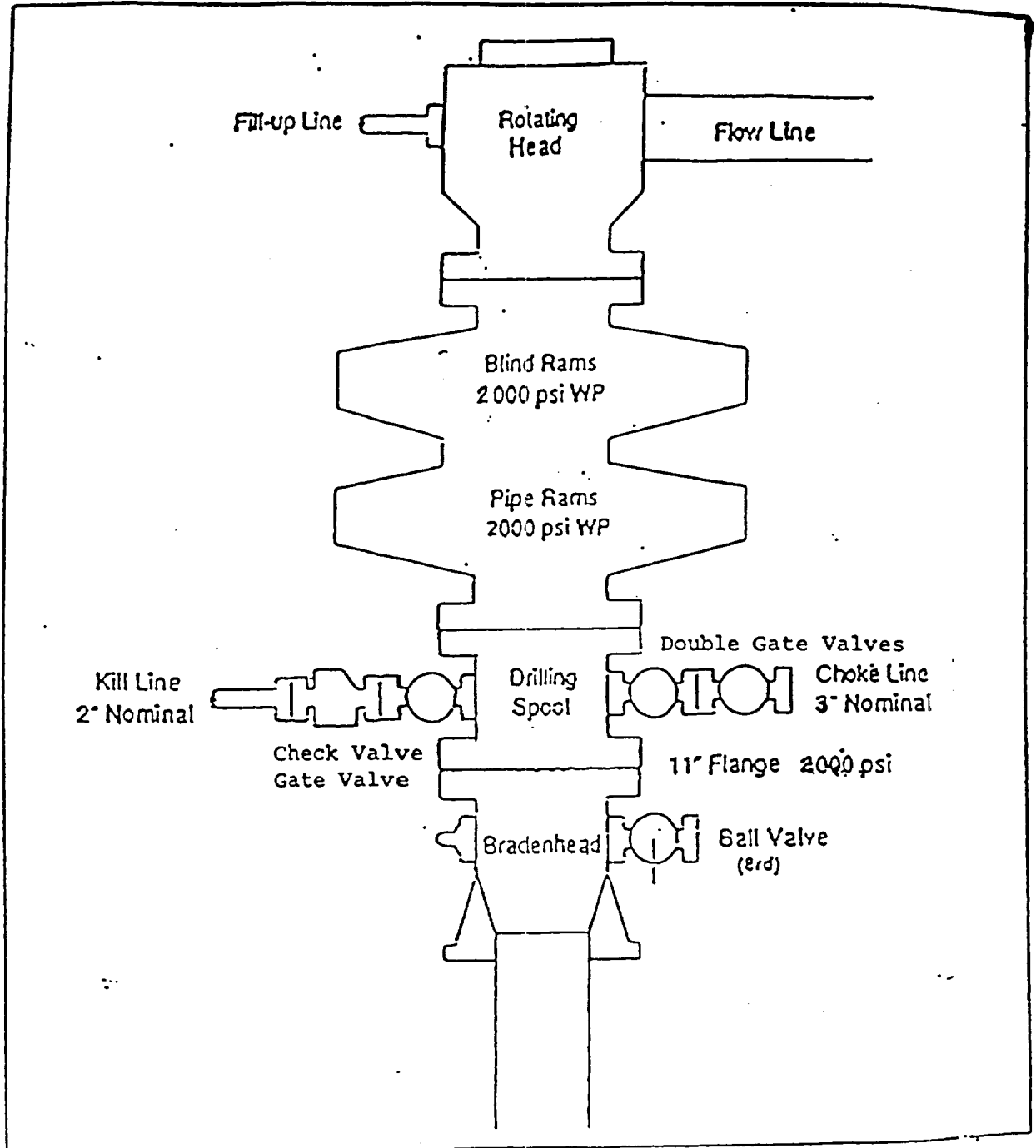
B. PRESSURE TEST

1. Pressure test 7" & 4-1/2" casing to 3300# for 15 minutes.

C. STIMULATION

1. Stimulate with approximately 80,000# of 20/40 sand in slick water.
2. Isolate Point Lookout with a CIBP.
3. Perforate the Menefee/Cliff House as determined from the open hole logs.
4. Stimulate with approximately 80,000# of 20/40 sand in slick water.

BOP STACK ARRANGEMENT



All ram type preventers and related equipment will be hydraulically tested at nipple-up and after any use under pressure to 1500 psi. The blind rams will be hydraulically activated and checked for operational readiness each time pipe is pulled out of the hole. All checks of the BOP stack and equipment will be noted on the daily drilling report. The BOP equipment will include a kill cock with handle, floor safety valve with change overs for each tool joint in the string, and choke manifold all rated to 2000 psi.