

UNITED STATES  
DEPARTMENT OF THE INTERIOR  
BUREAU OF LAND MANAGEMENT

ROW/APD

APPLICATION FOR PERMIT TO DRILL OR DEEPEN

200 DEC 11 PM 3:37

1a. Type of Work

DRILL

DEEPEN

b. Type of Well

Oil Well  Gas Well  Other

Single Well  Multiple Zone

OTO FARMINGTON, NM

2. Name of Operator

Williams Production Company

3. Address and Telephone No

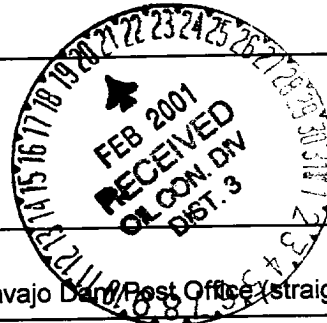
P.O. Box 3102, MS 37-2, Tulsa, OK. 74101

4. Location of Well (Footages)

At Surface

20' FSL 2360' FWL, SESW

proposed prod. zone



5. Lease Designation and Serial No.  
SF-078767

6. If Indian, Allottee or Tribe Name

7. If Unit or CA, Agreement Designation  
Rosa Unit

8. Well Name and No.  
RU-#30B -

9. API Well No.

30-039-26601

10. Field and Pool, or Exploratory Area  
Blanco-Mesa Verde

11. Sec., T., R., M., or BLK. and Survey or Area  
Section 12, T31N, R6W

14. Distance in Miles and Directions from Nearest Town or Post Office

Approximately 19.2 miles northeast of Navajo Dam Post Office (straight line)

12. County or Parish  
Rio Arriba

13. State  
NM

15. Distance from Proposed Location to Nearest

Property or Lease Line, Ft 20'

16. No. of Acres in Lease

2518.04 acres

17. No. of Acres Assigned to This Well

271.35 acres, S/2

18. Distance from Proposed Location to Nearest Well Drilling, Completed, or Applied for, on this Lease, FT

1320'

19. Proposed Depth

6253' KB -

20. Rotary or Cable Tools

DRILLING OPERATIONS CONDUCTED ARE SUBJECT TO COMPLIANCE WITH ATTACHED "GENERAL REQUIREMENTS"

22. Approximate Date Work Will Start

April 1, 2001

PROPOSED CASING AND CEMENTING PROGRAM

SIZE OF HOLE	SIZE & GRADE OF CASING	WEIGHT PER FOOT	SETTING DEPTH	QUANTITY OF CEMENT
9-5/8"	36# K-55	36# K-55	500'	255 sx-352 cu ft Type III <i>Circ</i>
8-3/4"	7"	20# K55	3803'	415 sx-869 cu ft Type III <i>Circ</i> 200sx-274 cu ft Type III
6-1/4"	4-1/2"	10.5# K55	3703'-6253' -	80sx-116 cu ft 190sx-276 cu ft Class H + 50/50 poz+4%gel

Williams Production Co. proposes to drill a vertical well to develop the Blanco Mesa Verde Formation in the described location above, and in accordance with the attached Operation and Surface Use plans. The surface is under the jurisdiction of the Bureau of Land Management-Farmington Field Office. Independent Contract Archaeology has surveyed the proposed location for Cultural Resources, and the report has been submitted to BLM for review. Nelson Consulting has submitted an Environmental Assessment to BLM-FFO for review.

This proposed well would not require the construction of a new access road, but would be adjacent to an existing gas field road (see Pipeline & Well Plats #3 and #4). The proposed 1,320-foot long pipeline would tie into the Williams Gas Gathering System on the Rosa Unit #30. This proposed well gathering pipeline would follow the existing gas field road (see the attached Pipeline Plat Map # 4).

I, Applicant, do hereby certify that the proposed program is in compliance with the proposed program. If proposal to deepen, give present productive zone and proposed new productive zone.  
Signed Steve Nelson Title Agent

COPIES: BLM+4, WELL FILE+1  
Date December 11, 2000

(This space for Federal or State office use)

Permit No. \_\_\_\_\_ Approval Date \_\_\_\_\_  
Application approval does not warrant or certify that applicant holds legal or equitable title to those rights in the subject lease which would entitle the applicant to conduct operations thereon.  
Conditions of approval, if any:

APPROVED BY: /s/ Jim Lovato

TITLE NMOCD  
Team Lead, Petroleum Management

DATE FEB 14 2001

District I  
PO Box 1980, Hobbs, NM 88241-1980

District II  
PO Drawer DD, Artesia, NM 88211-0719

District III  
1000 Rio Brazos Rd., Aztec, NM 87410

District IV  
PO Box 2088, Santa Fe, NM 87504-2088

State of New Mexico  
Energy, Minerals & Natural Resources Department

OIL CONSERVATION DIVISION  
PO Box 2088  
Santa Fe, NM 87504-2088

Form C-102  
Revised February 21, 1994

Instructions on back  
Submit to Appropriate District Office  
State Lease - 4 Copies  
Fee Lease - 3 Copies

200 DEC 11 PM 3:37 AMENDED REPORT

070 FARMINGTON, NM  
WELL LOCATION AND ACREAGE DEDICATION PLAT

*API Number 30-039-26601		*Pool Code 72319	*Pool Name Blanco Mesaverde
*Property Code 17033	*Property Name ROSA UNIT		*Well Number 30B
*GRID No. 120782	*Operator Name WILLIAMS PRODUCTION COMPANY		*Elevation 6486'

10 Surface Location

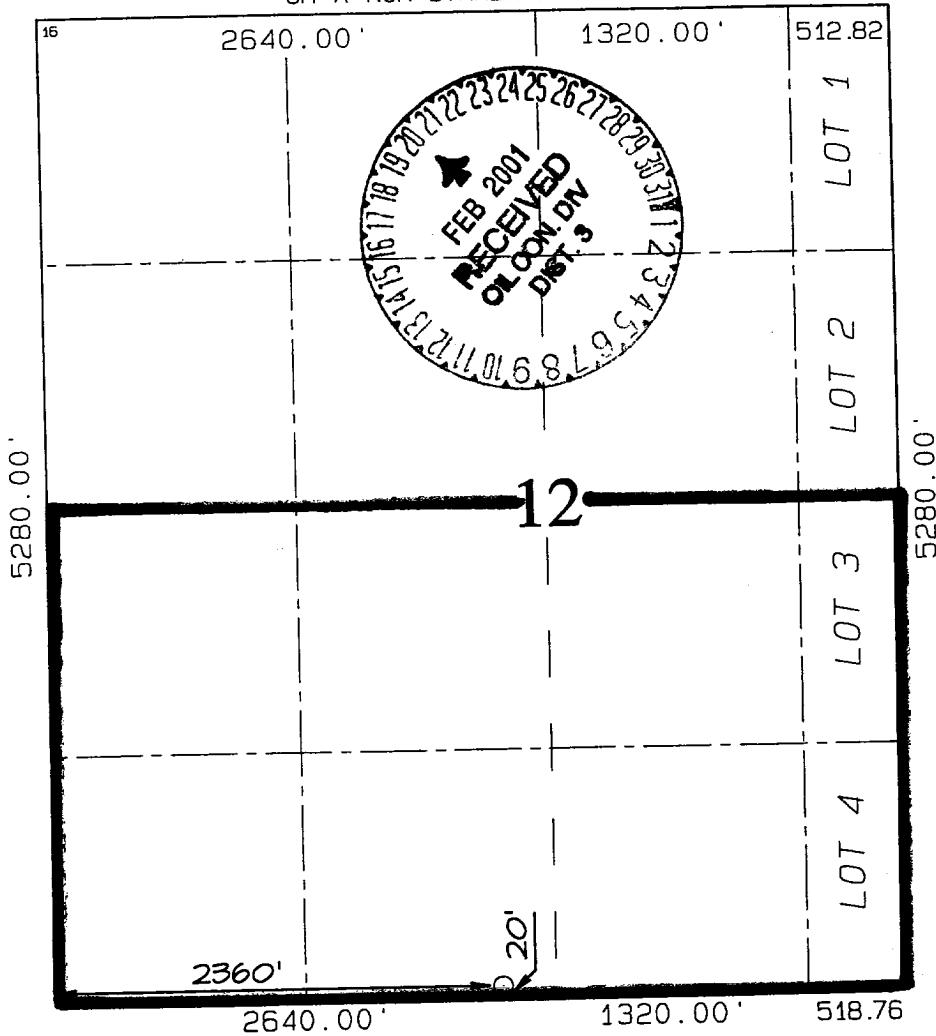
UL or lot no.	Section	Township	Range	Lot Idn	Feet from the	North/South line	Feet from the	East/West line	County
N	12	31N	6W		20	SOUTH	2360	WEST	RIO ARRIBA

11 Bottom Hole Location If Different From Surface

UL or lot no.	Section	Township	Range	Lot Idn	Feet from the	North/South line	Feet from the	East/West line	County

12 Dedicated Acres 271.35 - S/2	13 Joint or Infill I	14 Consolidation Code U	15 Order No.
------------------------------------	-------------------------	----------------------------	--------------

NO ALLOWABLE WILL BE ASSIGNED TO THIS COMPLETION UNTIL ALL INTERESTS HAVE BEEN CONSOLIDATED OR A NON-STANDARD UNIT HAS BEEN APPROVED BY THE DIVISION



17 OPERATOR CERTIFICATION

I hereby certify that the information contained herein is true and complete to the best of my knowledge and belief

*Steve Nelson*  
Signature

Steve Nelson  
Printed Name  
Agent, Nelson Consulting  
Title  
December 11, 2000  
Date

18 SURVEYOR CERTIFICATION

I hereby certify that the well location shown on this plat was plotted from field notes of actual surveys made by me or under my supervision and that the same is true and correct to the best of my belief.

OCTOBER 23, 2000

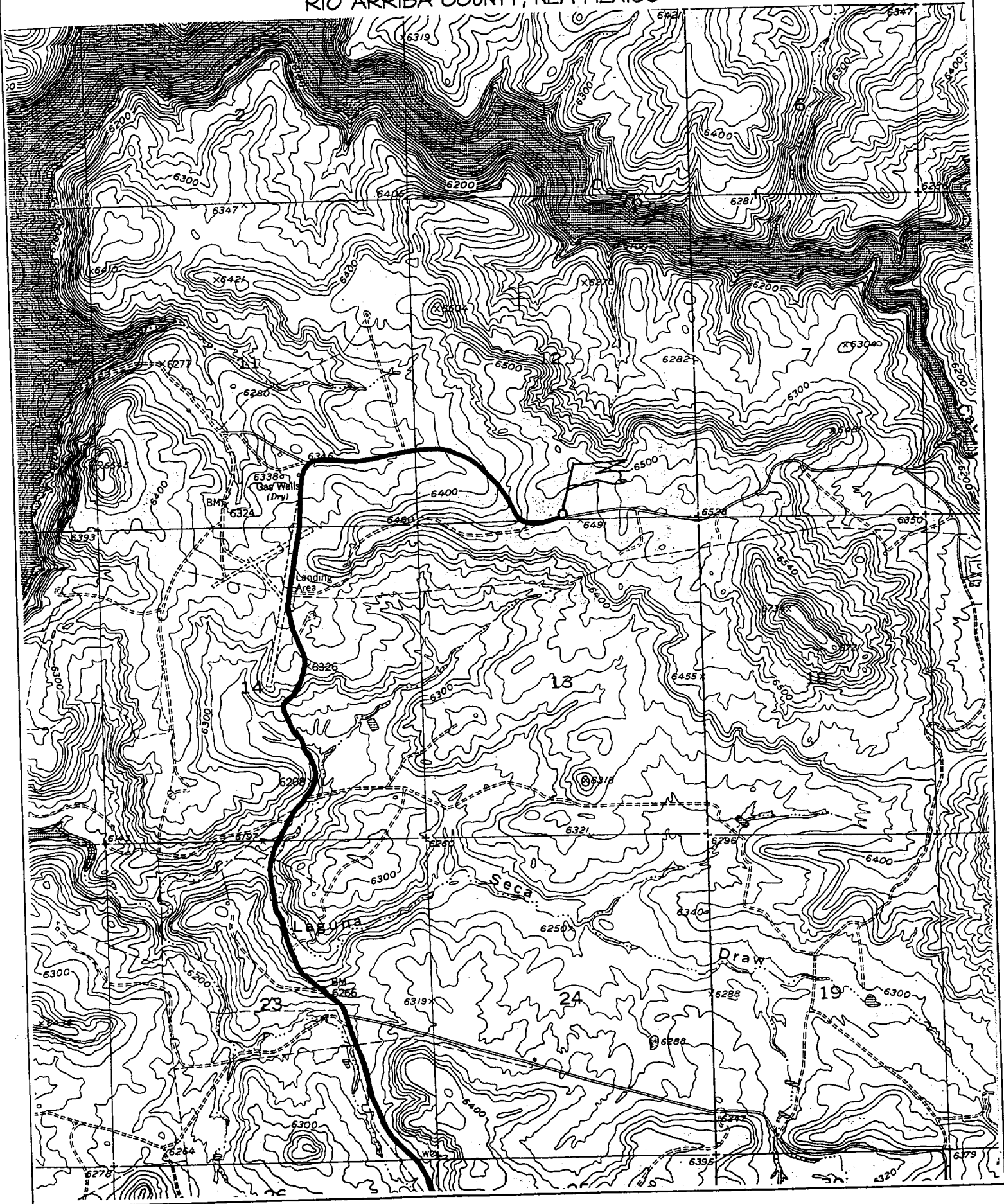
Date of Survey

Signature and Seal of Surveyor

NEALE G. EDWARDS  
NEW MEXICO  
6857  
Certificate No. 6857

# WILLIAMS PRODUCTION COMPANY ROSA UNIT #30B

20' FSL & 2360' FWL, SECTION 12, T31N, R6W, N.M.P.M.  
RIO ARRIBA COUNTY, NEW MEXICO



**B. FLOAT EQUIPMENT:**

1. SURFACE CASING: 9-5/8" notched regular pattern guide shoe. Run (1) standard centralizer on each of the bottom (3) joints of Surface Casing.
2. INTERMEDIATE CASING: 7" cement nose guide shoe with a self-fill insert float. Place float collar one joint above the shoe. Install one Turbulent centralizer on each of the bottom (3) joints and one standard centralizer every (4) joints to the surface casing. Total centralizers = (26) regular and (3) turbulent.
3. PRODUCTION CASING: 4-1/2" whirler type cement nose guide shoe with a latch collar on top of 20" bottom joint. Place marker joint above 5630'. Place one positive standoff turbolizer every other joint. Total turbolizers is 34.

**C. CEMENTING:**

1. SURFACE: Slurry: 255sx (352 cu.ft.) of "Type III" + 2% CaCl<sub>2</sub> + ¼ # of cello-flake/sk (Yield = 1.39 cu.ft./sk, Weight = 14.5 #/gal.). The 125% excess should circulate cement to the surface. WOC 12 hours. Test csg to 1500psi.
2. INTERMEDIATE: Lead: 415sx (869 ft<sup>3</sup>) of "Type III" 65/35 poz + 8% gel + 1% CaCl<sub>2</sub> + ¼ # cello-flake/sk (Yield = 2.09 ft<sup>3</sup>/sk, Weight = 12.1 #/gal.). Tail: 200sx (274 ft<sup>3</sup>) of class "Type III" + 1% CaCl<sub>2</sub> + ¼ # cello-flake/sk. (Yield = 1.39 ft<sup>3</sup>/sk, Weight = 14.5#/gal.). The 100% excess in lead and tail should circulate cement to the surface. Total volume = 1143 ft<sup>3</sup>. WOC 12 hours. Run a temperature survey after 8 hours if cement is not circulated to the surface. Test csg. to 1500psi.
3. PRODUCTION LINER: Lead: 80sx (116 ft<sup>3</sup>) of Class-H + 50/50 poz + 4 % gel + 0.4% FL-52. (Yield = 1.45 cu.ft./sk, Weight = 13.2 #/gal.). Tail: 190sx (276 ft<sup>3</sup>) of Class-H + 50/50 poz + 4 % gel + 0.4% FL-5 + ¼# celloflake/sk and 4% Phenoseal (Yield = 1.45 ft<sup>3</sup>/sk, Weight = 13.2 #/gal.). Displace cement at a minimum of 8 BPM. The 50% excess in lead and tail should cover liner top. Total volume 392 ft<sup>3</sup>. WOC 12 hours.

**IV COMPLETION**

**A. CBL**

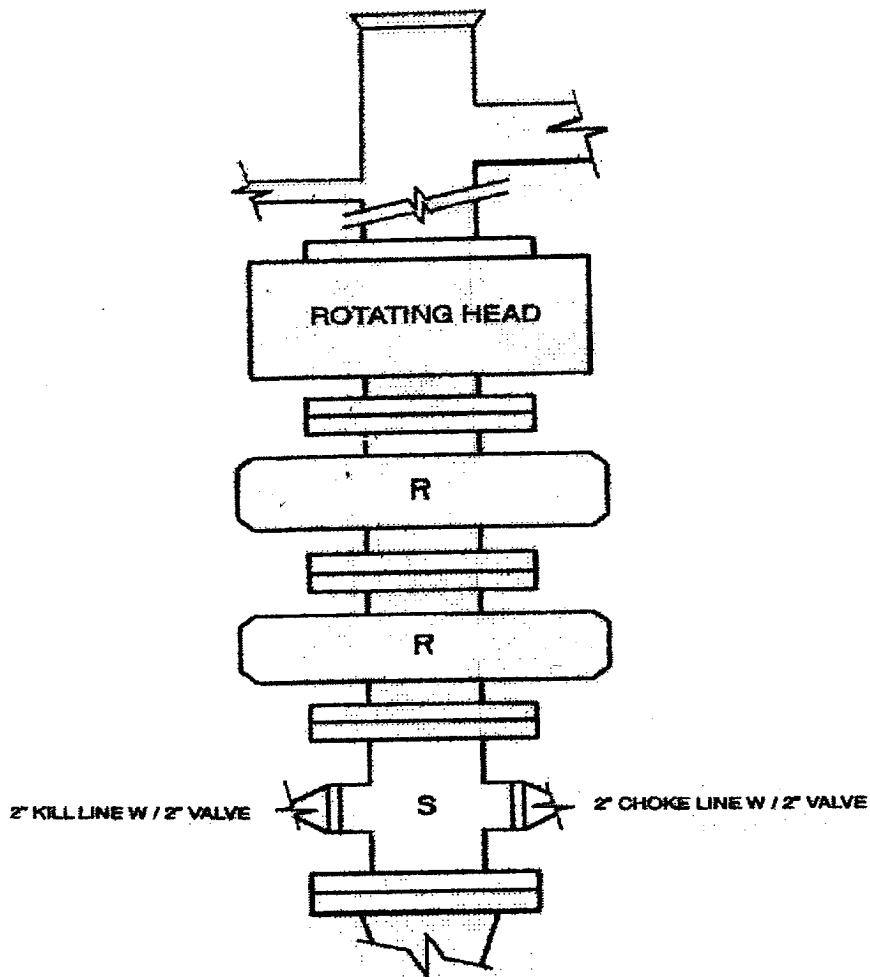
1. Run Cement Bond Log across all intervals to be perforated and find Top of Cement behind all casing strings.

**B. PRESSURE TEST**

1. Pressure test 7" & 4-1/2" casing to 3300# for 15 minutes.

**C. STIMULATION**

1. Stimulate with approximately 80,000# of 20/40 sand in slick water.
2. Isolate Point Lookout with a CIBP.
3. Perforate the Menefee/Cliff House as determined from the open hole logs.
4. Stimulate with approximately 80,000# of 20/40 sand in slick water.



2M – BOP ARRANGEMENT

2M SYSTEM:

- Annular preventer or double ram or two rams with one being blind and one being a pipe ram
- Kill line (2 inch minimum)
- 1 kill line valve (2 inch minimum)
- 1 choke line valve
- 2 chokes (refer to diagram)
- Upper kelly cock valve with handle available
- Safety valve and subs to fit all drill strings in use
- Pressure gauge on choke manifold
- 2 inch minimum choke line
- Fill-up line above uppermost preventer

Anticipated reservoir pressure is expected to be less than 1300 psi on all encountered zones.

All ram type preventers and related equipment will be hydraulically tested at nipple-up and after any use under pressure to 1500 psi. The pipe and blind rams will be activated and checked for operational readiness each trip. All checks of the BOP stack and equipment will be noted on the daily drilling report. The BOP equipment will include a kelly cock with handle, floor safety valve with changeovers for each tool joint in the string and choke manifold all rated to 2000 psi