

UNITED STATES  
DEPARTMENT OF THE INTERIOR  
BUREAU OF LAND MANAGEMENT

FORM APPROVED  
OMB NO. 1004-0136  
Expires: November 30, 2000

APPLICATION FOR PERMIT TO DRILL OR REENTER

1a. Type of Work <input checked="" type="checkbox"/> DRILL <input type="checkbox"/> REENTER		5. Lease Serial No. SF-078999
1b. Type of Well <input type="checkbox"/> Oil Well <input checked="" type="checkbox"/> Gas Well <input type="checkbox"/> Other <input checked="" type="checkbox"/> Single Zone <input type="checkbox"/> Multiple Zone		6. If Indian, Allottee or Tribe Name
2. Name of Operator Phillips Petroleum Company		7. Unit or CA Agreement Name and No. San Juan 31-6 Unit
3a. Address 5525 Highway 64, NBU 3004, Farmington, NM 87401		8. Lease Name and Well No. SJ 31-6 Unit #231R
3b. Phone No. (include area code) 505-599-3454		9. API Well No. 30-037-26778
4. Location of Well (Report location clearly and in accordance with any State requirements)* At surface Unit K, 2149' FSL & 1754' FWL  At proposed prod. zone same as above		10. Field and Pool, or Exploratory Basin Fruitland Coal
14. Distance in miles and direction from nearest town or post office* 23 miles northeast of Blanco, NM		11. Sec., T., R., M., or Blk. and Survey or Area K Section 27, T31N, R6W
15. Distance from proposed* location to nearest property or lease line, ft. (Also to nearest drg. unit line, if any) 1754'	16. No. of Acres in lease 2560.0 acres	17. Spacing Unit dedicated to this well 320 W/2
18. Distance from proposed location* to nearest well, drilling, completed, applied for, on this lease, ft.	19. Proposed Depth 3315'	20. BLM/BIA Bond No. on file ES0048
21. Elevations (Show whether DF, KDB, RT, GL, etc.) 6440' GL --	22. Approximate date work will start* 3rd Qtr 2001	23. Estimated duration 1 month

24. Attachments

The following, completed in accordance with the requirements of Onshore Oil and Gas Order No. 1, shall be attached to this form:

- |   |  |
|---|--|
| 1. Well plat certified by a registered surveyor.  | 4. Bond to cover the operations unless covered by an existing bond on file (see Item 20 above).    |
| 2. A Drilling Plan  | 5. Operator certification.   |
| 3. A Surface Use Plan (if the location is on National Forest System Lands, the SUPO shall be filed with the appropriate Forest Service Office). | 6. Such other site specific information and/or plans as may be required by the authorized officer. |

25. Signature <i>Patsy Clugston</i>	Name (Printed/Typed) Patsy Clugston	Date 7/12/01
-------------------------------------	--	-----------------

Title  
Sr. Regulatory/Proration Clerk

Approved by (Signature) <i>/s/ Joel Farrell</i>	Name (Printed/Typed)	Date JUL 11
---	----------------------	----------------

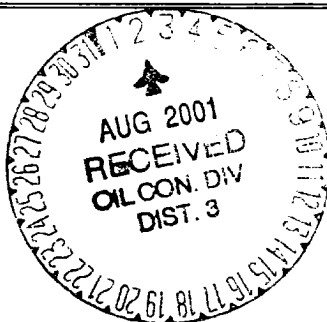
Title	Office
-------	--------

Application approval does not warrant or certify that the applicant holds legal or equitable title to those rights in the subject lease which would entitle the applicant to conduct operations thereon.  
Conditions of approval, if any, are attached.

Title 18 U.S.C. Section 1001 and Title 43 U.S.C. Section 1212, make it a crime for any person knowingly and willfully to make to any department or agency of the United States any false, fictitious or fraudulent statements or representations as to any matter within its jurisdiction.

\*(Instructions on Reverse)

procedural review pursuant to 43 CFR 3165.3  
and appeal pursuant to 43 CFR 3165.4.



NMCCO

ALL INFORMATION CONTAINED HEREIN IS UNCLASSIFIED WITH THE EXCEPTED "CENTRAL REQUIREMENTS"

District I  
PO Box 1980, Hobbs, NM 88241-1980  
District II  
811 South First, Artesia, NM 88210  
District III  
1000 Rio Brazos Rd., Aztec, NM 87410  
District IV  
2040 South Pacheco, Santa Fe, NM 87505

State of New Mexico  
Energy, Minerals & Natural Resources Department

Form C-10:  
Revised October 18, 199.

OIL CONSERVATION DIVISION  
2040 South Pacheco  
Santa Fe, NM 87505

Instructions on back  
Submit to Appropriate District Office  
State Lease - 4 Copies  
Fee Lease - 3 Copies

☐ AMENDED REPORT

WELL LOCATION AND ACREAGE DEDICATION PLAT

1 APN Number <b>30-039-26778</b>		2 Pool Code <b>71629</b>		3 Pool Name <b>Basin Fruitland Coal</b>		
4 Property Code <b>009259</b>		5 Property Name <b>SAN JUAN 31-6 UNIT</b>			6 Well Number <b>231R</b>	
7 OGRID No. <b>017654</b>		8 Operator Name <b>PHILLIPS PETROLEUM COMPANY</b>			9 Elevation <b>6440'</b>	

10 Surface Location

UL or lot no. <b>K</b>	Section <b>27</b>	Township <b>31N</b>	Range <b>6W</b>	Lot Idn	Feet from the <b>2149'</b>	North/South line <b>SOUTH</b>	Feet from the <b>1754'</b>	East/West line <b>WEST</b>	County <b>RIO ARriba</b>
---------------------------	----------------------	------------------------	--------------------	---------	-------------------------------	----------------------------------	-------------------------------	-------------------------------	-----------------------------

11 Bottom Hole Location If Different From Surface

UL or lot no. <b>K</b>	Section	Township	Range	Lot Idn	Feet from the	North/South line	Feet from the	East/West line	County
---------------------------	---------	----------	-------	---------	---------------	------------------	---------------	----------------	--------

12 Dedicated Acres <b>320 W/2</b>	13 Joint or Infill <b>Y</b>	14 Consolidation Code <b>U</b>	15 Order No.
--------------------------------------	--------------------------------	-----------------------------------	--------------

NO ALLOWABLE WILL BE ASSIGNED TO THIS COMPLETION UNTIL ALL INTERESTS HAVE BEEN CONSOLIDATED OR A NON-STANDARD UNIT HAS BEEN APPROVED BY THE DIVISION

16 <b>N89°40'E</b> <b>5257.56'</b>		17 OPERATOR CERTIFICATION I hereby certify that the information contained herein is true and complete to the best of my knowledge and belief  <b>Patsy Clugston</b> Signature <b>Patsy Clugston</b> Printed Name <b>Sr. Regulatory/Proration Clerk</b> Title <b>7-12-01</b> Date	
2 <b>5280.00'</b>		2 <b>5280.00'</b>	
2 <b>Section 27</b>		2 <b>5280.00'</b>	
1754' <b>N00°02'E</b>		1754' <b>N00°03'E</b>	
2149' <b>N89°53'E</b> <b>5266.80'</b>		2149' <b>N00°03'E</b>	
SF-078999 2560.0 acres		5/17/01 Date of Survey <b>HEINRICH P. BROADHURST, JR.</b> Signature <b>11993</b> Certificate Number	

AUG 2001  
RECEIVED  
OIL CON. DIV.  
DIST. 3

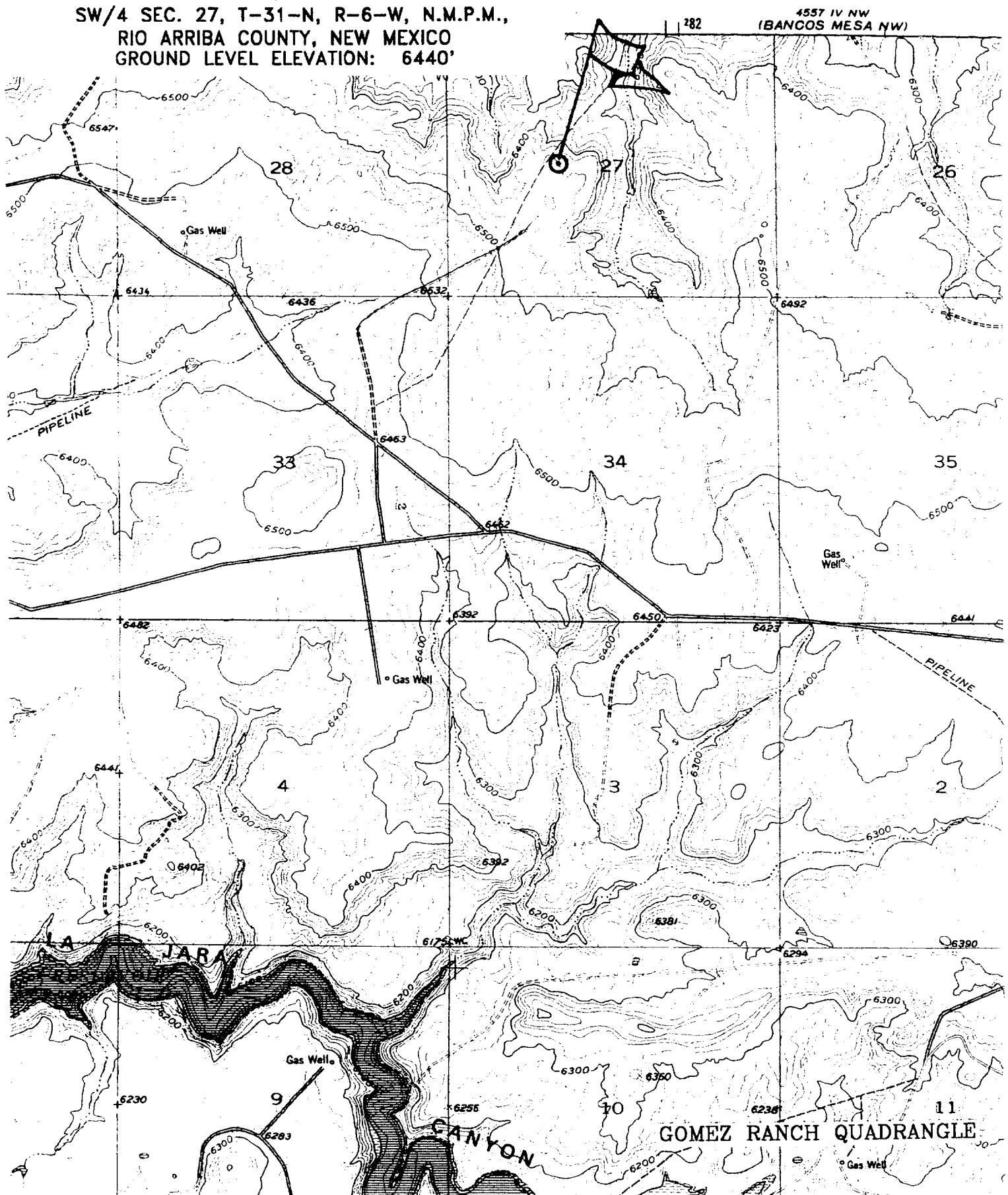
SAN JUAN 31-6 UNIT No. 231R

2149' FSL, 1754' FWL

SW/4 SEC. 27, T-31-N, R-6-W, N.M.P.M.,

RIO ARriba COUNTY, NEW MEXICO

GROUND LEVEL ELEVATION: 6440'



## PHILLIPS PETROLEUM COMPANY

WELL NAME: San Juan 31-6 Unit #231R

NOTE: The San Juan 31-6 Unit #231 has been converted to a Pressure Observation Well and plans are to keep it as such.

### DRILLING PROGNOSIS

1. Location of Proposed Well: Unit K, 2149' FSL & 1754' FWL  
Section 27, T31N, R6W
2. Unprepared Ground Elevation: @ 6440'.
3. The geological name of the surface formation is San Jose.
4. Type of drilling tools will be rotary.
5. Proposed drilling depth is 3315'.
6. The estimated tops of important geologic markers are as follows:

<u>Nacimiento - 1000'</u>	
<u>Ojo Alamo - 2490'</u>	<u>Base of Coal - 3315'</u>
<u>Kirtland - 2590'</u>	<u>Picture Cliffs - 3315'</u>
<u>Fruitland - 3065'</u>	<u>Interm. Casing - 3145'</u>
<u>Top of Coal - 3165'</u>	<u>T. D. - 3315'</u>
7. The estimated depths at which anticipated water, oil, gas or other mineral bearing formations are expected to be encountered are as follows:

Water:	<u>Ojo Alamo - 2490' - 2590'</u>
Oil:	<u>none</u>
Gas:	<u>Fruitland Coal - 3165' - 3315'</u>
Gas & Water:	<u>Fruitland Coal - 3165' - 3315'</u>
8. The proposed casing program is as follows:

Surface String: 9-5/8", 36#, J/K-55 @ 200' \*

Intermediate String: 7", 20#, J/K-55 @ 3145'

Production Liner: 5-1/2", 15.5# J/K-55 @ 3125' - 3315' (see details below)

\* The surface casing will be set at a minimum of 200', but could be set deeper if required to maintain hole stability.
9. Cement Program:

Surface String: 102.7 sx Type III cement. Cement to surface w/110% excess of casing/hole annulus volume w/Type III cement + 2% bwoc Calcium Chloride + 0.25#/sx Cello-flake + 60.6% Fresh water (14.5 ppg). (1.41 cf/sx yield = 145 cf)

## 9. Cement program: (continued from Page 1)

Intermediate String: **Lead Cement:** 357.6 sx Type III cement. Cement to surface - 110% excess casing/hole annular volume w/ Type III cement + 0.25#/sx Cello-flake + 5#/sx Gilsonite + 6% bwoc Bentonite + 10#/sx CSE + 3% bwow KCL + 0.4% bwoc FL-25 mixed + 0.02#/sx static free mixed at 12.0 ppg. (2.52 cf/sx yield = 901 cf)

**Tail:** 50 sx Type III cement + 0.25#/sx Cello-flake + 1% Calcium Chloride mixed at 14.5 ppg. (1.40 cf/sx yield = 70 cf)

Note: Phillips Petroleum continually works to improve the cement slurries on our wells. BJ Services is currently trying to improve what we are using now and before we would be use a new cement program it would have to have stronger properties than we are currently using.

Centralizer Program:

Surface: Total four (4) - 10' above shoe and top of 2<sup>nd</sup>, 3<sup>rd</sup>, & 4<sup>th</sup> jts.

Intermediate: Total seven (7) - 10' above shoe and top of 1<sup>st</sup>, 2<sup>nd</sup>, 4<sup>th</sup>, 6<sup>th</sup>, 8<sup>th</sup>, & 1<sup>st</sup> jt. into shoe.

Turbulators: Total three (3) - one at 1<sup>st</sup> jt below Ojo Alamo and next 2 jts up.

Liner :

- If the coal is cleated a 5 ½" 15.5# liner will be run in the open hole without being cemented.
- If the coal is not cleated, a 4-1/2" 11.6# liner will be run & cemented. The well will then be completed by fracture stimulation.

10. The minimum specifications for pressure control equipment which are to be used, a schematic diagram thereof showing sizes, pressure ratings (or) API series and the testing procedure and testing frequency are enclosed within the APD packet.
11. Drilling Mud Prognosis: Surface - spud mud on surface casing.  
Intermediate - fresh water w/polymer sweeps. Bentonite as required for viscosity.  
Below Intermediate - air drilled.
12. The testing, logging, and coring programs are as follows:  
D.S.T.s or cores: \_\_\_\_\_  
Logs: Mud logs only

## BOP AND RELATED EQUIPMENT CHECK LIST

### 2M SYSTEM:

2 hydr. rams (pipe & blind) or hydr. ram and annular with blind ram on bottom

Kill Line (2-inch minimum)

1 kill line valve (2-inch minimum)

1 choke line valve

2 chokes (refer to diagram in attachment 1) on choke manifold

Upper kelly cock valve in open position with handle available

Safety valve (in open position) and subs to fit all drill strings in use (with handle available)

Pressure gauged on choke manifold

2 inch minimum choke line

Fill-up line above the uppermost preventer

*The BOPs will be pressure tested according to Onshore Order #2 III, A 1 and 30% safety factor.*