

**ROSA UNIT #8C
BLANCO MESAVERDE**

Spud date: 06/10/02

Completed: 07/30/02

Location:

660' FSL and 2025' FWL
SE/4 SW/4 Sec 26(N), T31N R06W
Rio Arriba, New Mexico

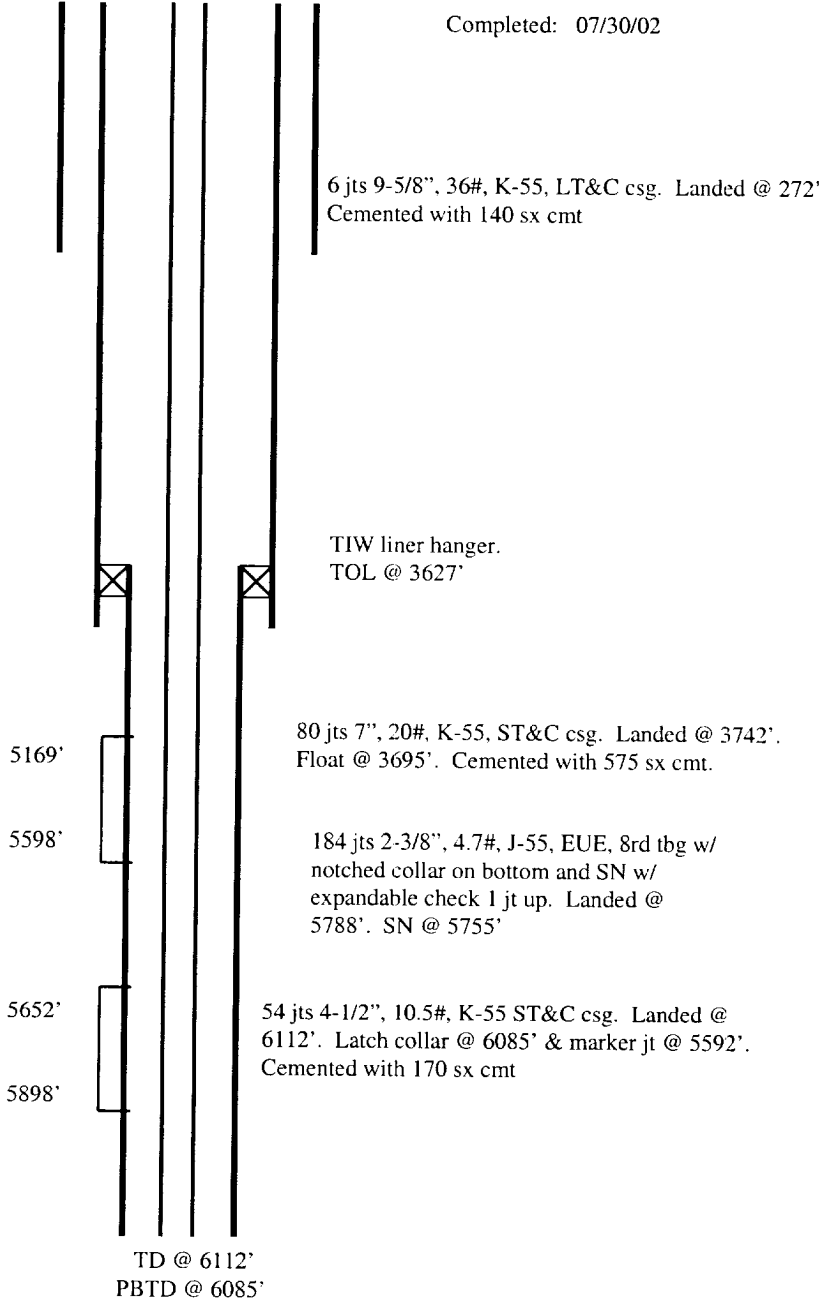
Elevation: 6429' GR
API # 30-039-26944

<u>Top</u>	<u>Depth</u>
Pictured Cliffs	3300'
Lewis	3672'
CliffHouse	5387'
Menefee	5433'
Point Lookout	5646'

STIMULATION

CliffHouse/Menefee: 5169' - 5598'
(24, 0.38" holes) Frac with 80,000#
20/40 sand in 1935 bbls slick water.

Point Lookout: 5652' - 5898' (29,
0.38" holes) Frac with 80,000# 20/40
sand in 1938 bbls slick water.



Hole Size	Casing	Cement	Volume	Top of CMT
12-1/4"	9-5/8", 36#	140 sx	180 cu ft.	surface
8-3/4"	7", 20#	575 sx	1075 cu ft.	surface
6-1/4"	4-1/2", 10.5#	170 sx	352 cu ft.	3627'

✓