

DISTRICT I P.O. Box 1980, Hobbs, NM 88240

DISTRICT I P.O. Drawer DD, Artesia, NM 88210

DISTRICT I 1000 Rio Brazons Rd., Aztec, NM 87410

OIL CONSERVATION DIVISION

2040 Pacheco St. Santa Fe, New Mexico 87505

WELL API NO. 30-039-26961
5. Indicate Type of Lease STATE [] FEE []
6. State Oil & Gas Lease No.
7. Lease Name or Unit Agreement Name Rosa Unit
8. Well No. 59, 160B, 165B, 165C
9. Pool name or Wildcat Dakota

SUNDRY NOTICES AND REPORTS ON WELLS (DO NOT USE THIS FORM FOR PROPOSALS TO DRILL OR TO DEEPEN OR PLUG BACK TO A DIFFERENT RESERVOIR. USE "APPLICATION FOR PERMIT" (FORM C-101) FOR SUCH PROPOSALS)

1. Type of Well: OIL WELL [] GAS WELL [X] OTHER
2. Name of Operator Williams Production Company, LLC
3. Address of Operator c/o Walsh Engineering, 7415 East Main Street, Farmington, NM 87402

4. Well Location Unit Letter : Feet From The Line and Feet From The Line Section 25 Township 31N Range 6W NMPM County

10. Elevation (Show whether DF, RKB, RT, GR, etc.)

11. Check Appropriate Box to Indicate Nature of Notice, Report, or Other Data
NOTICE OF INTENTION TO: PERFORM REMEDIAL WORK [] PLUG AND ABANDON [] TEMPORARILY ABANDON [] CHANGE PLANS [] PULL OR ALTER CASING [] OTHER: Proation Unit Change [X]
SUBSEQUENT REPORT OF: REMEDIAL WORK [] ALTERING CASING [] COMMENCE DRILLING OPNS. [] PLUG & ABANDONMENT [] CASING TEST AND CEMENT JOB [] OTHER: [X]

12. Describe Proposed or Completed Operations (Clearly state all pertinent details, and give pertinent date, including estimated date of starting any proposed work). SEE RULE 1103.

Williams Production Company, LLC proposes a north half - south half proation unit in section 25, 31N, R6W in order to comply with NMOCD hearing order R20-46. The following wells would be affected by the proation unit change: Rosa Unit #59 (south half), Rosa Unit 160B-proposed (south half), Rosa Unit 165B (north half), Rosa Unit 165C (north half).

Attached: New plats showing correct Dakota proation unit.

I hereby certify that the information above is true and complete to the best of my knowledge and belief. SIGNATURE [Signature] TITLE Agent/Engineer DATE 05/06/02 TYPE OR PRINT NAME John C. Thompson TELEPHONE NO. 327-4892

(This space for State Use) APPROVED BY Original Signed by STEVEN N. HAYDEN DEPUTY OIL & GAS INSPECTOR, N.M.T. DATE MAY - 6 2002

CONDITIONS OF APPROVAL, IF ANY:

District I
PO Box 1980, Hobbs, NM 88241-1980

State of New Mexico
Energy, Minerals & Natural Resources Department

Form C-102
Revised February 21, 1994

District II
PO Drawer DD, Artesia, NM 88211-0719

Submit to Appropriate District Office
State Lease - 4 Copies
Fee Lease - 3 Copies

OIL CONSERVATION DIVISION
PO Box 2088
Santa Fe, NM 87504-2088

District III
1000 Rio Brazos Rd., Aztec, NM 87410

AMENDED REPORT

District IV
PO Box 2088, Santa Fe, NM 87504-2088

WELL LOCATION AND ACREAGE DEDICATION PLAT

*API Number		*Pool Code 79870 / 71599		*Pool Name Laguna Seca Gallup / Basin Dakota	
*Property Code 17033		*Property Name ROSA UNIT		*Well Number 59	
*GRID No. 120782		*Operator Name WILLIAMS PRODUCTION COMPANY		*Elevation 6400'	

¹⁰ Surface Location

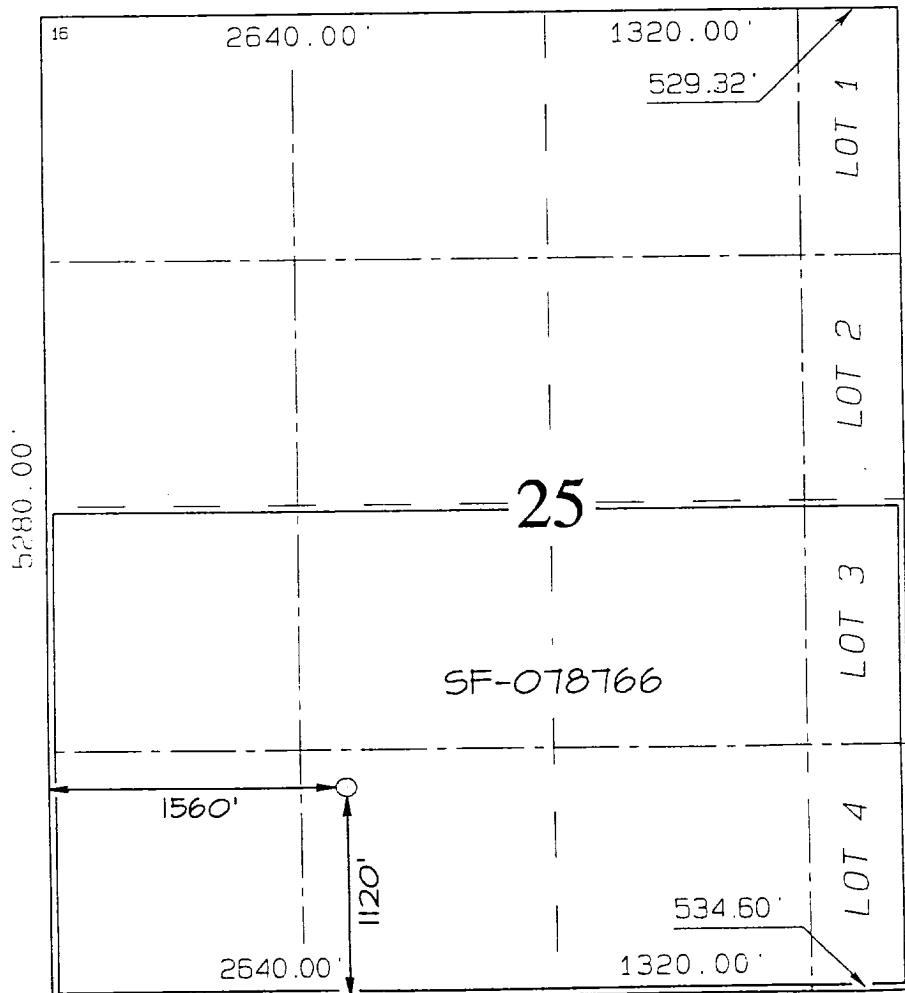
U. or lot no.	Section	Township	Range	Lot Idn	Feet from the	North/South line	Feet from the	East/West line	County
N	25	31N	6W		1120	SOUTH	1560	WEST	RIO ARRIBA

¹¹ Bottom Hole Location If Different From Surface

U. or lot no.	Section	Township	Range	Lot Idn	Feet from the	North/South line	Feet from the	East/West line	County

¹² Dedicated Acres 272.32 Acres - S/2	¹³ Joint or Infill	¹⁴ Consolidation Code	¹⁵ Order No. R-2046 A
---	-------------------------------	----------------------------------	-------------------------------------

NO ALLOWABLE WILL BE ASSIGNED TO THIS COMPLETION UNTIL ALL INTERESTS HAVE BEEN CONSOLIDATED OR A NON-STANDARD UNIT HAS BEEN APPROVED BY THE DIVISION



¹⁷ OPERATOR CERTIFICATION
I hereby certify that the information contained herein is true and complete to the best of my knowledge and belief.

John C. Thompson
Signature
John C. Thompson
Printed Name
Agent/Engineer
Title
5/6/02
Date

¹⁸ SURVEYOR CERTIFICATION
I hereby certify that the well location shown on this plat was plotted from field notes of actual surveys made by me or under my supervision, and that the same is true and correct to the best of my belief.

INFORMATION OF RECORD
Date Plat Drawn: MAY 1, 2002
Signature and Seal of Professional Surveyor

Jason C. Edwards
Certificate Number 15269

District I
PO Box 1980, Hobbs, NM 88241-1980

State of New Mexico
Energy, Minerals & Natural Resources Department

Form C-102
Revised February 21, 1994

District II
PO Drawer 00, Artesia, NM 88211-0719

OIL CONSERVATION DIVISION
PO Box 2088
Santa Fe, NM 87504-2088

Submit to Appropriate District Office
State Lease - 4 Copies
Fee Lease - 3 Copies

District III
1006 Rio Brazos Rd., Aztec, NM 87410

District IV
PO Box 2088, Santa Fe, NM 87504-2088

AMENDED REPORT

WELL LOCATION AND ACREAGE DEDICATION PLAT

¹ API Number		² Pool Code 72319 - 71599		³ Pool Name Blanco Mesaverde - Basin Dakota	
⁴ Property Code 17033		⁵ Property Name ROSA UNIT			⁶ Well Number 160B
⁷ OSRID No. 120782		⁸ Operator Name WILLIAMS PRODUCTION COMPANY			⁹ Elevation 6410'

¹⁰ Surface Location

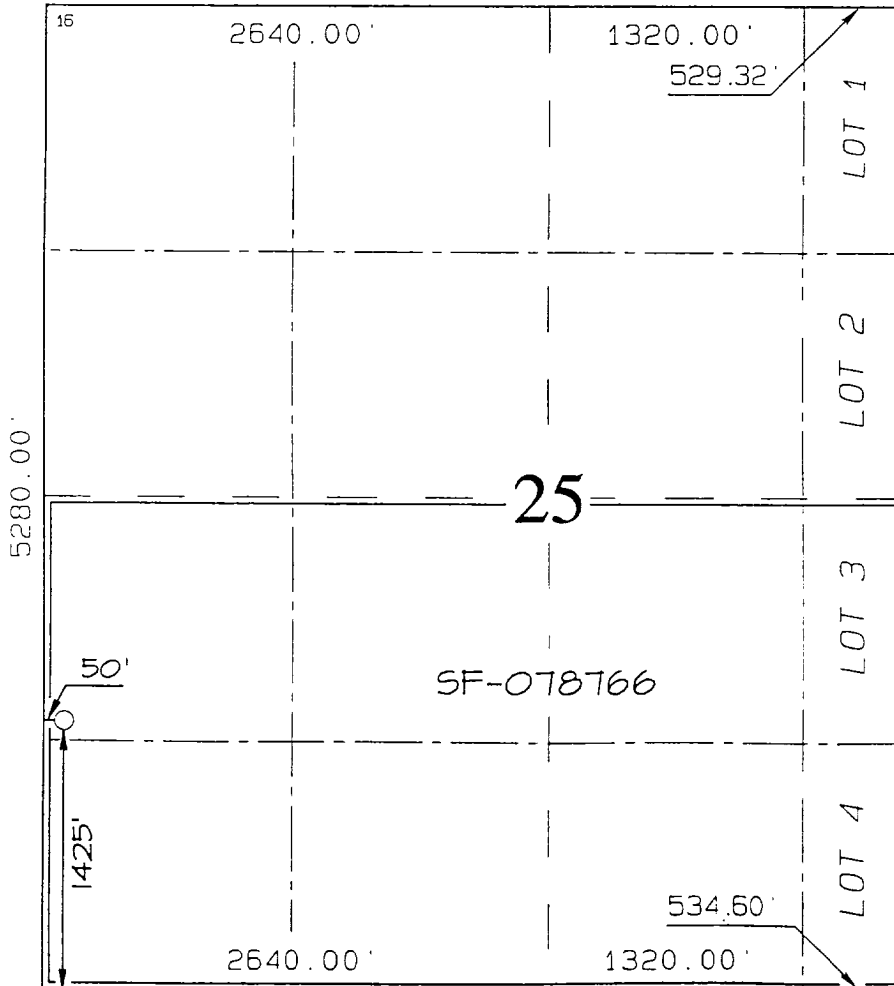
U. or lot no.	Section	Township	Range	Lot Idn	Feet from the	North/South line	Feet from the	East/West line	County
L	25	31N	6W		1425	SOUTH	50	WEST	RIO ARRIBA

¹¹ Bottom Hole Location If Different From Surface

U. or lot no.	Section	Township	Range	Lot Idn	Feet from the	North/South line	Feet from the	East/West line	County

¹² Dedicated Acres 272.32 Acres - S/2	¹³ Joint or Infill	¹⁴ Consolidation Code	¹⁵ Order No. R-2046A
---	-------------------------------	----------------------------------	------------------------------------

NO ALLOWABLE WILL BE ASSIGNED TO THIS COMPLETION UNTIL ALL INTERESTS HAVE BEEN CONSOLIDATED OR A NON-STANDARD UNIT HAS BEEN APPROVED BY THE DIVISION



¹⁷ OPERATOR CERTIFICATION

I hereby certify that the information contained herein is true and complete to the best of my knowledge and belief.

John C. Thompson
Signature
John C. Thompson
Printed Name
Agent/Engineer
Title
5/6/02
Date

¹⁸ SURVEYOR CERTIFICATION

I hereby certify that the well location shown on this plat was plotted from field notes of actual surveys made by me or under my supervision, and that the same is true and correct to the best of my belief.

REVISED: MAY 2, 2002
Survey Date: FEBRUARY 14, 2002

Signature and Seal of Professional Surveyor

JASON C. EDWARDS
NEW MEXICO
REGISTERED PROFESSIONAL SURVEYOR
15269

JASON C. EDWARDS
Certificate Number 15269

District I
PO Box 1980, Hobbs, NM 88241-1980

State of New Mexico
Energy, Minerals & Natural Resources Department

Form C-102
Revised February 21, 1994

District II
PO Drawer DD, Artesia, NM 86211-0719

OIL CONSERVATION DIVISION
PO Box 2088
Santa Fe, NM 87504-2088

Submit to Appropriate District Office
State Lease - 4 Copies
Fee Lease - 3 Copies

District III
1000 Rio Brazos Rd., Aztec, NM 87410

AMENDED REPORT

District IV
PO Box 2088, Santa Fe, NM 87504-2088

WELL LOCATION AND ACREAGE DEDICATION PLAT

1 API Number		2 Pool Code		3 Pool Name	
		72319 / 71599		Blanco Mesaverde / Basin Dakota	
4 Property Code		5 Property Name			6 Well Number
17033		ROSA UNIT			165B
7 OGRID No.		8 Operator Name			9 Elevation
120782		WILLIAMS PRODUCTION COMPANY			6311'

10 Surface Location

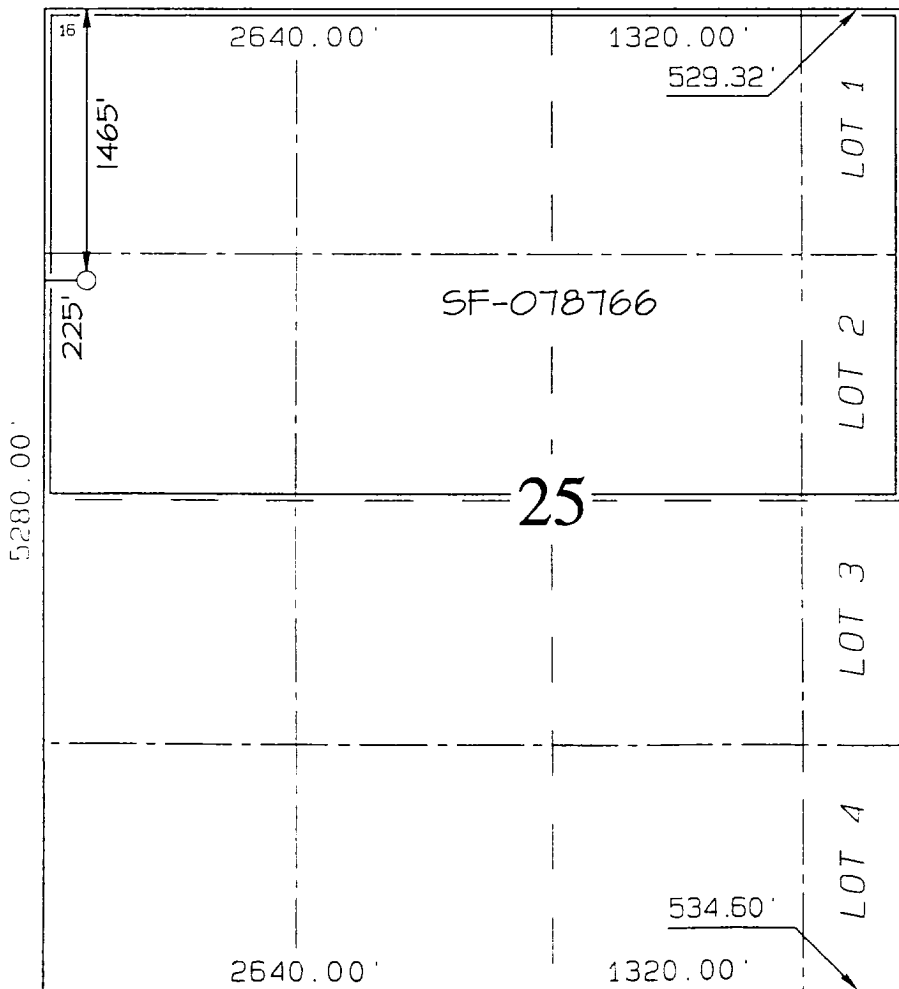
11 or lot no.	Section	Township	Range	Lot Idn	Feet from the	North/South line	Feet from the	East/West line	County
E	25	31N	6W		1465	NORTH	225	WEST	RIO ARRIBA

11 Bottom Hole Location If Different From Surface

11 or lot no.	Section	Township	Range	Lot Idn	Feet from the	North/South line	Feet from the	East/West line	County

12 Dedicated Acres					13 Joint or Infill	14 Consolidation Code	15 Order No.		
272.16 Acres - N/2							R-2046A		

NO ALLOWABLE WILL BE ASSIGNED TO THIS COMPLETION UNTIL ALL INTERESTS HAVE BEEN CONSOLIDATED OR A NON-STANDARD UNIT HAS BEEN APPROVED BY THE DIVISION



17 OPERATOR CERTIFICATION

I hereby certify that the information contained herein is true and complete to the best of my knowledge and belief

[Signature]
Signature

John C. Thompson

Printed Name
Agent/Engineer

Title
5/6/02

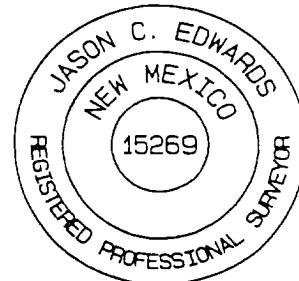
Date

18 SURVEYOR CERTIFICATION

I hereby certify that the well location shown on this plat was plotted from field notes of actual surveys made by me or under my supervision, and that the same is true and correct to the best of my belief.

REVISED: MAY 1, 2002
Survey Date: AUGUST 29, 2000

Signature and Seal of Professional Surveyor



[Signature]
Certificate Number 15269