

District I
PO Box 1980, Hobbs, NM 88241-1980
District II
PO Drawer DD, Artesia, NM 88211-0719
District III
1000 Rio Brazos Rd., Aztec, NM 87410
District IV
PO Box 2088, Santa Fe, NM 87504-2088

State of New Mexico
Energy, Minerals & Natural Resources Department

OIL CONSERVATION DIVISION
PO Box 2088
Santa Fe, NM 87504-2088

Form C-101
Revised February 21, 1994
Instructions on back
Submit to Appropriate District Office
State Lease - 6 Copies
Fee Lease - 5 Copies
AMENDED REPORT

APPLICATION FOR PERMIT TO DRILL, RE-ENTER, DEEPEN, PLUGBACK, OR ADD A ZONE

¹ Operator Name and Address. Williams Production Company, LLC c/o Walsh Engineering 7415 E. Main Street Farmington, NM 87401		² OGRID Number 120782
		³ API Number 30 - 03926968
⁴ Property Code 17033	⁵ Property Name Rosa Unit	⁶ Well No. 24C

⁷ Surface Location

UL or lot no.	Section	Township	Range	Lot Idn	Feet from the	North/South line	Feet from the	East/West line	County
C	32	31N	5W	ne nw	210'	North	1905'	West	Rio Arriba

⁸ Proposed Bottom Hole Location If Different From Surface

UL or lot no.	Section	Township	Range	Lot Idn	Feet from the	North/South line	Feet from the	East/West line	County
⁹ Proposed Pool 1 Blanco Mesaverde					¹⁰ Proposed Pool 2 Basin Dakota				

¹¹ Work Type Code N	¹² Well Type Code N 6	¹³ Cable/Rotary R	¹⁴ Lease Type Code S	¹⁵ Ground Level Elevation 6500'
¹⁶ Multiple Yes	¹⁷ Proposed Depth 8232'	¹⁸ Formation Dakota	¹⁹ Contractor Aztec Well Service	²⁰ Spud Date When Permitted

²¹ Proposed Casing and Cement Program

Hole Size	Casing Size	Casing weight/foot	Setting Depth	Sacks of Cement	Estimated TOC
14-3/4"	10-3/4"	40.55 ppf	~250'	230 sx	Surface -
9-7/8"	7-5/8"	26.4 ppf	~3827'	620 sx & 255 sx	Surface
6-3/4"	5-1/2"	17.0 ppf	~8232'	245 sx	~3677' -

²² Describe the proposed program. If this application is to DEEPEN or PLUG BACK give the data on the present productive zone and proposed new productive zone. Describe the blowout prevention program, if any. Use additional sheets if necessary.

Williams proposes to drill a vertical well w/ a 14-3/4" surface hole w/ water & benex to approx. 250' and set 10-3/4", 40.5#, K-55 casing, cement to surface w/ ~230 sx (323 cu.ft.) of Type III, w/ 2% CaCl2 & 1/2# of CF. Will then drill a 9-7/8" hole to approx. 3827' w/ clear water & Benex. and set 7-5/8", 26.4#, K-55 casing, cement w/ 620 sx (1292 cu.ft.) of "Premium lite" 65/35 Type III/Poz w/ 8% gel, & 1/2#/sx CF. Tail w/ 255 sx (352 cu.ft.) of Type III w/ 1/2#/sx CF. Cement volumes calculated to circulate cement to surface. Will then drill 6-3/4" hole to TD @ approx 8232' w/ air. Run open hole surveys. Set 5-1/2", 17#, N-80 casing and cement w/ 245 sx (489 cu.ft.) of "Premium lite" HS, 1% FL-52, 0.3% CD-32, 2% KCl, 0.25#/sk CF, 5% Phenoseal & 0.2% R3. Cement volume calculated to bring TOC to approx. 3677' (150' inside int. csg.). After 10-3/4" surface is set a 2M (double ram) blowout preventer will be installed & pressure tested to 1500 psi. A 2" kill line & 2" line to a choke manifold will also be installed.

Will test the Dakota & Mesaverde through perforated casing. Will fracture stimulate both Dakota & Mesaverde, the DK/MV zones will be isolated w/ a RBP as well as the PLO & Menefee/CH zones. If productive, the Dakota will be produced thru 2-1/16" tbg w/ a production packer isolating the Dakota from the Mesaverde. The Mesaverde, if productive, will be produced thru 2-3/8" tbg.

Geologic Tops: Ojo Alamo - 2642', Kirtland - 2762', Fruitland - 3107', Pictured Cliffs - 3352', Lewis - 3642', Cliff House 5212', Menefee - 5567', Point Lookout - 5792', Mancos 6127', Gallup 7097', Greenhorn - 7817', Graneros - 7872', Dakota - 7982'

²³ I hereby certify that the information given above is true and complete to the best of my knowledge and belief.

Signature: *John C. Thompson*

Printed name: **John C. Thompson**

Title: **Agent / Engineer**

Date: **4/11/02**

Phone: **505-327-4892**

OIL CONSERVATION DIVISION

Approved by: *[Signature]*

Title: **SENIOR ASST. BAS. INSPECTOR, DIST. #6**

Approval Date: **APR 11 2002**

Expiration Date: **APR 11 2003**

Conditions of Approval:

Attached ☐

District I
PO Box 1980, Hobbs, NM 88241-1980

District II
PO Drawer DD, Artesia, NM 88211-0719

District III
1000 Rio Brazos Rd., Aztec, NM 87410

District IV
PO Box 2088, Santa Fe, NM 87504-2088

State of New Mexico
Energy, Minerals & Natural Resources Department

OIL CONSERVATION DIVISION
PO Box 2088
Santa Fe, NM 87504-2088

Form C-102
Revised February 21, 1994
Instructions on back
Submit to Appropriate District Office
State Lease - 4 Copies
Fee Lease - 3 Copies

☐ AMENDED REPORT

WELL LOCATION AND ACREAGE DEDICATION PLAT

*API Number 30-039-26968		*Pool Code 72319 / 71599	*Pool Name Blanco Mesaverde / Basin Dakota
*Property Code 17033	*Property Name ROSA UNIT		*Well Number 24C
*GRID No. 120782	*Operator Name WILLIAMS PRODUCTION COMPANY		*Elevation 6500'

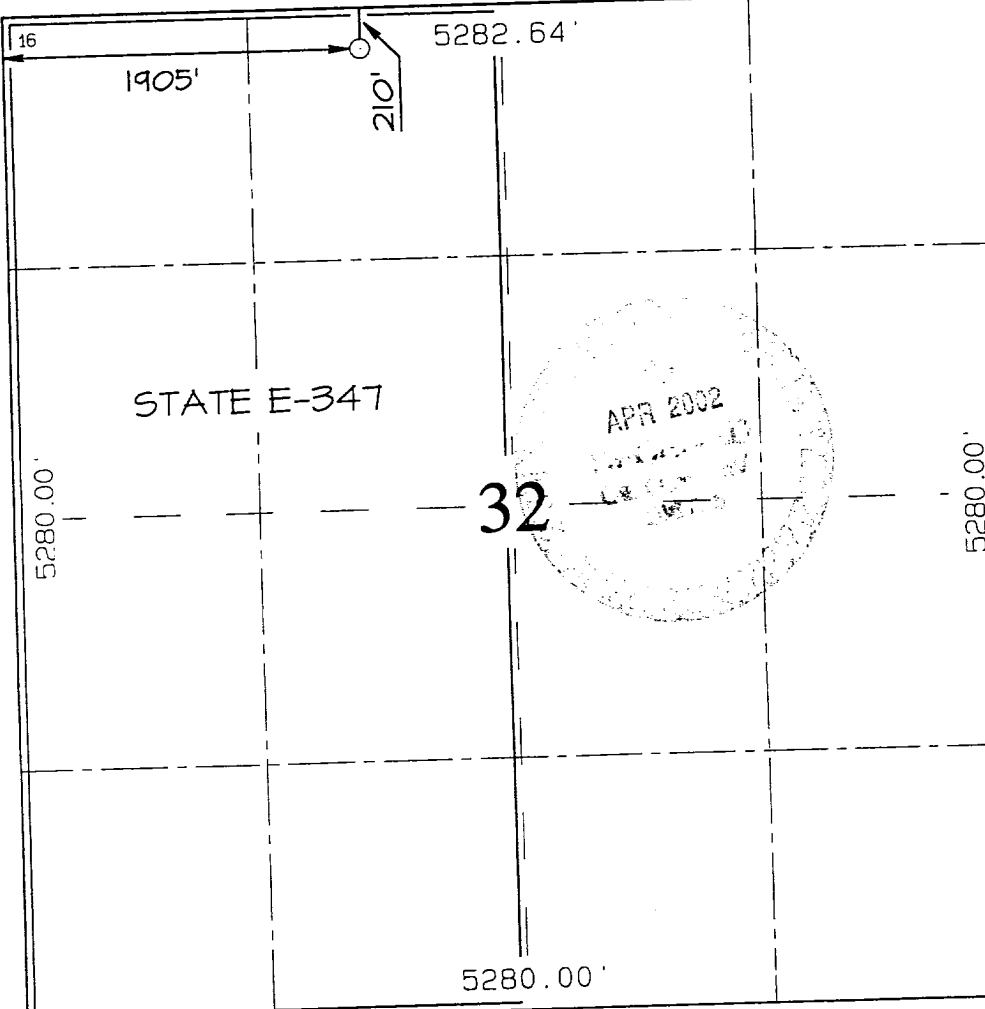
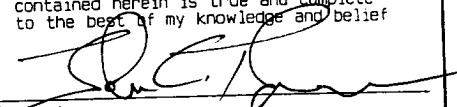
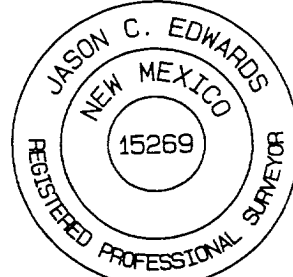
10 Surface Location

UL or lot no.	Section	Township	Range	Lot Idn	Feet from the	North/South line	Feet from the	East/West line	County
C	32	31N	5W		210	NORTH	1905	WEST	RIO ARriba

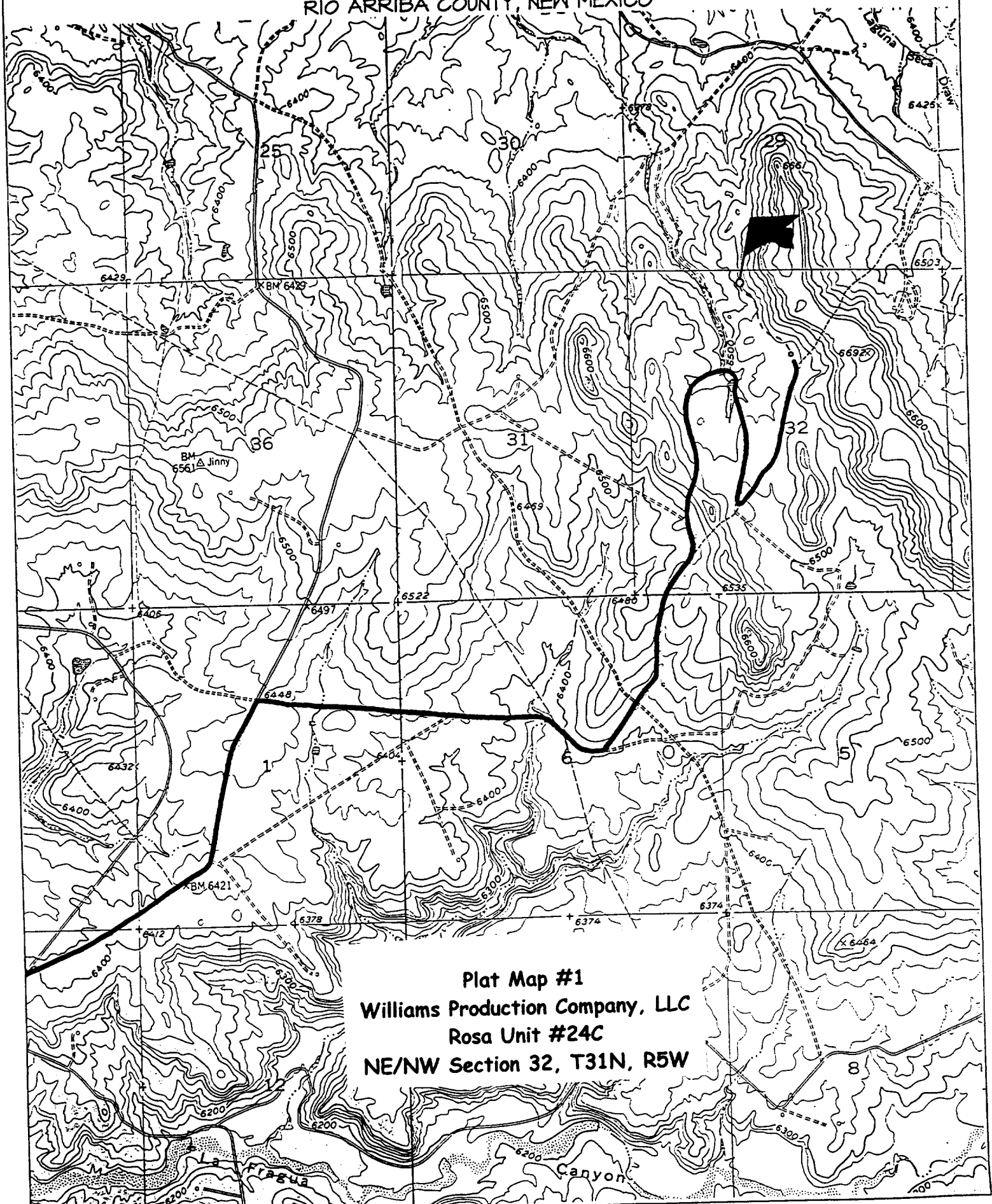
11 Bottom Hole Location If Different From Surface

UL or lot no.	Section	Township	Range	Lot Idn	Feet from the	North/South line	Feet from the	East/West line	County
12 Dedicated Acres 320.0 Acres - (W/2)					13 Joint or Infill		14 Consolidation Code		15 Order No.

NO ALLOWABLE WILL BE ASSIGNED TO THIS COMPLETION UNTIL ALL INTERESTS HAVE BEEN CONSOLIDATED
OR A NON-STANDARD UNIT HAS BEEN APPROVED BY THE DIVISION

	17 OPERATOR CERTIFICATION I hereby certify that the information contained herein is true and complete to the best of my knowledge and belief.  Signature John C. Thompson Printed Name Agent/Engineer Title 4/11/02 Date
	18 SURVEYOR CERTIFICATION I hereby certify that the well location shown on this plat was plotted from field notes of actual surveys made by me or under my supervision, and that the same is true and correct to the best of my belief. Date of Survey: MARCH 3, 2002
	Signature and Seal of Professional Surveyor  JASON C. EDWARDS Certificate Number 15269

WILLIAMS PRODUCTION COMPANY ROSA UNIT #24C
210' FNL & 1905' FWL, SECTION 32, T31N, R5W, N.M.P.M.
RIO ARriba COUNTY, NEW MEXICO



Plat Map #1
Williams Production Company, LLC
Rosa Unit #24C
NE/NW Section 32, T31N, R5W