

**NEW MEXICO OIL CONSERVATION COMMISSION**  
**Santa Fe, New Mexico**

## NOTICE OF INTENTION TO DRILL OR RECOMPLETE

Notice must be given to the District Office of the Oil Conservation Commission and approval obtained before drilling or recompletion begins. If changes in the proposed plan are considered advisable, a copy of this notice showing such changes will be returned to the sender. Submit this notice in **QUINTUPLICATE**. One copy will be returned following approval. See additional instructions in Rules and Regulations of the Commission.

Farmington, New Mexico  
 (Place)

November 12, 1953  
 (Date)

OIL CONSERVATION COMMISSION  
 SANTA FE, NEW MEXICO

Gentlemen:

You are hereby notified that it is our intention to commence the (Drilling) (Recompletion) of a well to be known as

El Paso Natural Gas Company  
 (Company or Operator)

Siegel

(Lease)

, Well No. 1, in SW 1/4 M. The well is

(Unit)

located 1090 feet from the South line and 940 feet from the

West

line of Section 32, T. 30N, R. 11W, NMPM.

(GIVE LOCATION FROM SECTION LINE) Aztec Pool, San Juan County

If State Land the Oil and Gas Lease is No. Fee

If patented land the owner is \_\_\_\_\_

Address \_\_\_\_\_

We propose to drill well with drilling equipment as follows: Rotary tools to the top of the Pictured Cliffs, completing the well with cable tools.

The status of plugging bond is Statewide

Drilling Contractor Company Tools

We intend to complete this well in the Pictured Cliffs

formation at an approximate depth of 2211 feet.

D	C	B	A
E	F	G	H
L	K	J	I
<u>M</u>	N	O	P

Elev. 5918'G 5928'DF

### CASING PROGRAM

We propose to use the following strings of Casing and to cement them as indicated:

Size of Hole	Size of Casing	Weight per Foot	New or Second Hand	Depth	Sacks Cement
<u>13-3/8</u>	<u>9-5/8</u>	<u>25.4</u>	<u>New</u>	<u>120</u>	<u>100</u>
<u>7-7/8</u>	<u>5-1/2</u>	<u>15.5</u>	<u>New</u>	<u>2147'</u>	<u>200</u>

If changes in the above plans become advisable we will notify you immediately.

ADDITIONAL INFORMATION (If recompletion give full details of proposed plan of work.) It is intended to shoot the Pictured Cliffs formation with two quarts of S.N.G. per foot.

The SW/4 of Section 32 is dedicated to this well.  
Communitization will be filed with the State.

(OVER)

Approved 11-17, 19 53  
 Except as follows:

Sincerely yours,

EL PASO NATURAL GAS COMPANY  
 (Company or Operator)

By Harold L. Denduck

Position Petroleum Engineer

Send Communications regarding well to

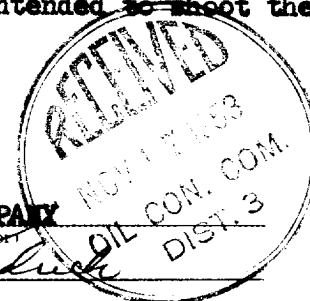
Name E. J. Coel

Address Box 997 Farmington, New Mexico

OIL CONSERVATION COMMISSION  
 Original Signed Emery C. Arnold

By \_\_\_\_\_

Title Oil and Gas Inspector Dist. #3.



B-10644	NW/4 SW/4	Murphy et al.
NM 080241	S/2 SW/4	George Siegel
E-3149	NE/4 SW/4	Texas Company

COMPANY El Paso Natural Gas Company

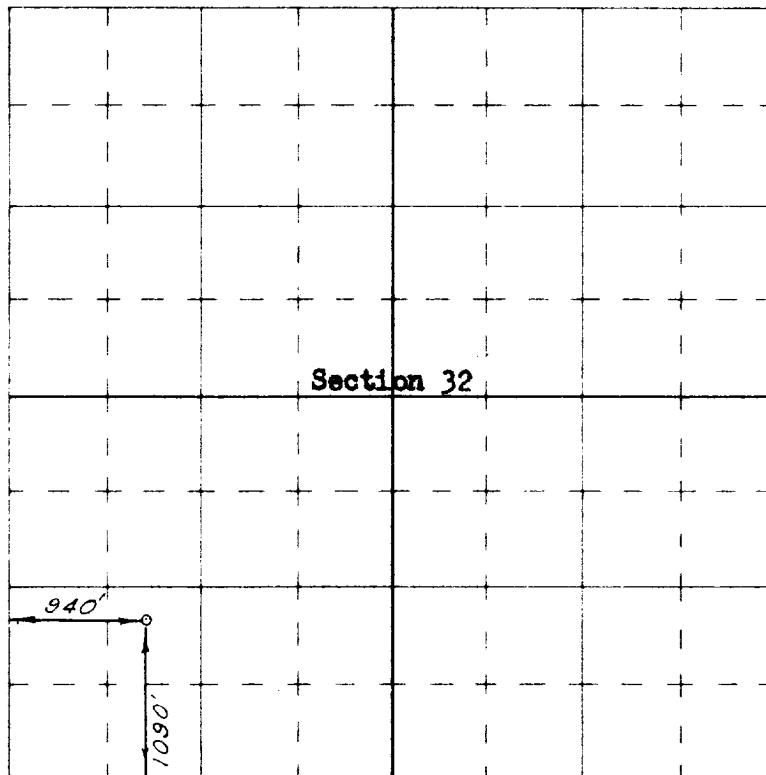
Well Name & No. Siegel No. 1 Lease No. Fee

Location 1090 ft. from the south line, 940 ft. from the west line

Being in SW $\frac{1}{4}$  of the SW $\frac{1}{4}$

Sec. 32, T 30N., R 11W., N.M.P.M., San Juan County, New Mexico

Ground Elevation 5918.49



Scale -- 4 inches equals 1 mile



Surveyed October 31, 1953

This is to certify that the above plat was prepared from field notes of actual surveys made by me or under my supervision and that the same are true and correct to the best of my knowledge and belief.

C. O. Walker

Registered Professional  
Engineer and Land Surveyor.

Seal:

Farmington, New Mexico

OIL CONSERVATION COMMISSION  
AZTEC DISTRICT OFFICE

No. Copies Received 7

DISTRIBUTION

	NO. FURNISHED	
Operator	3	
Santa Fe	1	
Proration Office		
State Land Office		
U. S. G. S.	2	
Transporter		
File	1	<input checked="" type="checkbox"/>