

NEW MEXICO OIL CONSERVATION COMMISSION
Santa Fe, New Mexico

NOTICE OF INTENTION TO DRILL OR RECOMPLETE

Notice must be given to the District Office of the Oil Conservation Commission and approval obtained before drilling or recompletion begins. If changes in the proposed plan are considered advisable, a copy of this notice showing such changes will be returned to the sender. Submit this notice in QUINTUPPLICATE. One copy will be returned following approval. See additional instructions in Rules and Regulations of the Commission.

Farmington, New Mexico

(Place)

May 15, 1953

(Date)

OIL CONSERVATION COMMISSION
SANTA FE, NEW MEXICO

Gentlemen:

You are hereby notified that it is our intention to commence the (Drilling) (Recompletion) of a well to be known as

El Paso Natural Gas Company

(Company or Operator)

El Paso Natural Gas State

(Lease)

Well No. 1

in NE 1/4

(Unit)

The well is

located 3630 feet from the South line and 990 feet from the

EAST

line of Section 32

T. 30N

R. 8W

NMPM.

(GIVE LOCATION FROM SECTION LINE)

Blanco

Pool,

San Juan

County

If State Land the Oil and Gas Lease is No. B - 10938 - 36

If patented land the owner is

Address

We propose to drill well with drilling equipment as follows: Rotary tools through the Mesaverde, drilling the pay section with gas circulation.

The status of plugging bond is State wide Bond

Drilling Contractor Great Western Drilling Company

We intend to complete this well in the Mesaverde

formation at an approximate depth of 5205 feet.

CASING PROGRAM

We propose to use the following strings of Casing and to cement them as indicated:

| Size of Hole | Size of Casing | Weight per Foot | New or Second Hand | Depth | Sacks Cement |
|--------------|----------------|-----------------|--------------------|-------|--------------|
| 13 3/4 | 9 5/8 | 25.4 | New | 160' | 125 |
| 8 3/4 | 7" | 23.0 | New | 4490 | 300 |
| | | | | | |
| | | | | | |

If changes in the above plans become advisable we will notify you immediately.

ADDITIONAL INFORMATION (If recompletion give full details of proposed plan of work.) It is intended to shoot the pay section with two quarts S.N.G. per foot. The NE 1/4 of Section 32 is dedicated to this well.

Communitization will be filed as soon as possible.

(SE - Skelly Oil Co. - SWSE, Gordon Rohles, Albuquerque, New Mexico - NWSE, Blanco Gas Company Dallas, Texas.)

Approved _____, 19 53

Except as follows: 5-18

Sincerely yours,

EL PASO NATURAL GAS COMPANY

(Company or Operator)

By _____

Position Petroleum Engineer.

Send Communications regarding well to

Name E. J. Coal

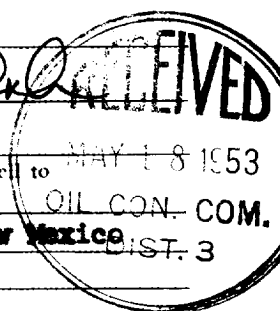
Address Box 997 Farmington, New Mexico

OIL CONSERVATION COMMISSION

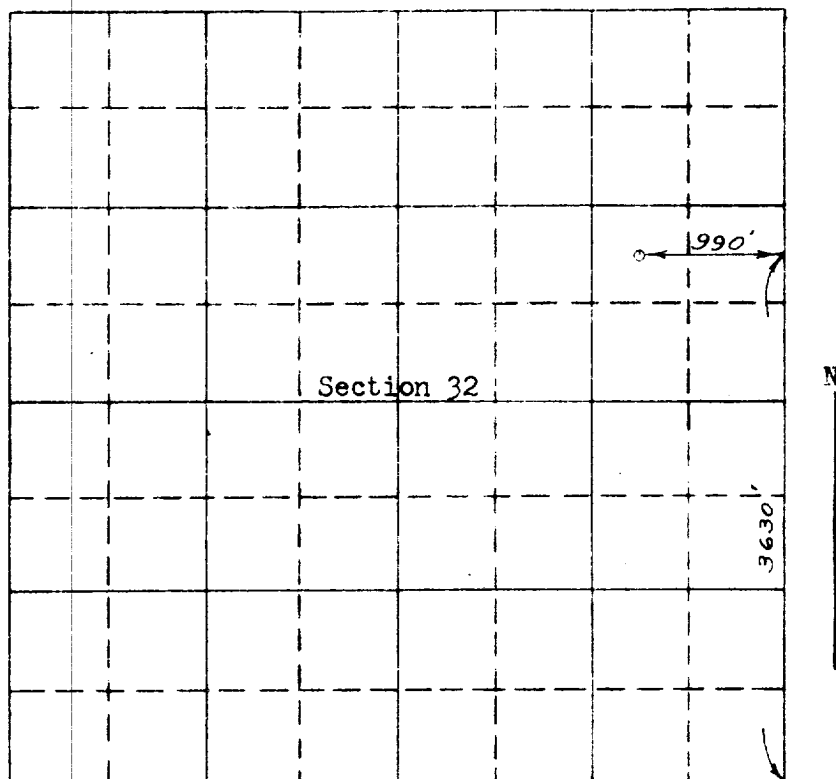
By _____

Oil and Gas Inspector Dist. #3.

Title _____



COMPANY EL PASO NATURAL GAS COMPANY
Well Name & No. EPNG - State No. 1 Lease No. _____
Location 3630 feet North and 990 feet West of SE corner section.
Being in SE¹ of the NE¹
Sec. 32, T30 N., R 8 W., N.M.P.M., San Juan County, New Mexico
Ground Elevation 6161.06



Scale -- 4 inches equals 1 mile

Surveyed May 5, 19 53

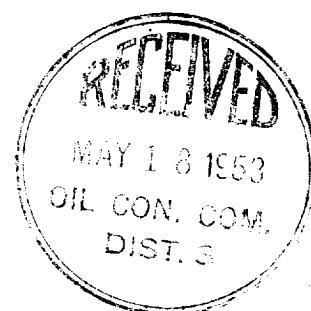
This is to certify that the above plat was prepared from field notes of actual surveys made by me or under my supervision and that the same are true and correct to the best of my knowledge and belief.

C. O. Walker

Registered Professional
Engineer and Land Surveyor.

Seal:

Farmington, New Mexico



OIL CONSERVATION COMMISSION
AZTEC DISTRICT OFFICE

No. Copies Received 7

DISTRIBUTION

| | NO. FURNISHED | |
|-------------------|------------------|---|
| Operator | 2 | |
| Santa Fe | 1 | |
| Proration Office | 1 | |
| State Land Office | | |
| U. S. G. S. | 2 | |
| Transporter | | |
| File | 1 | ✓ |