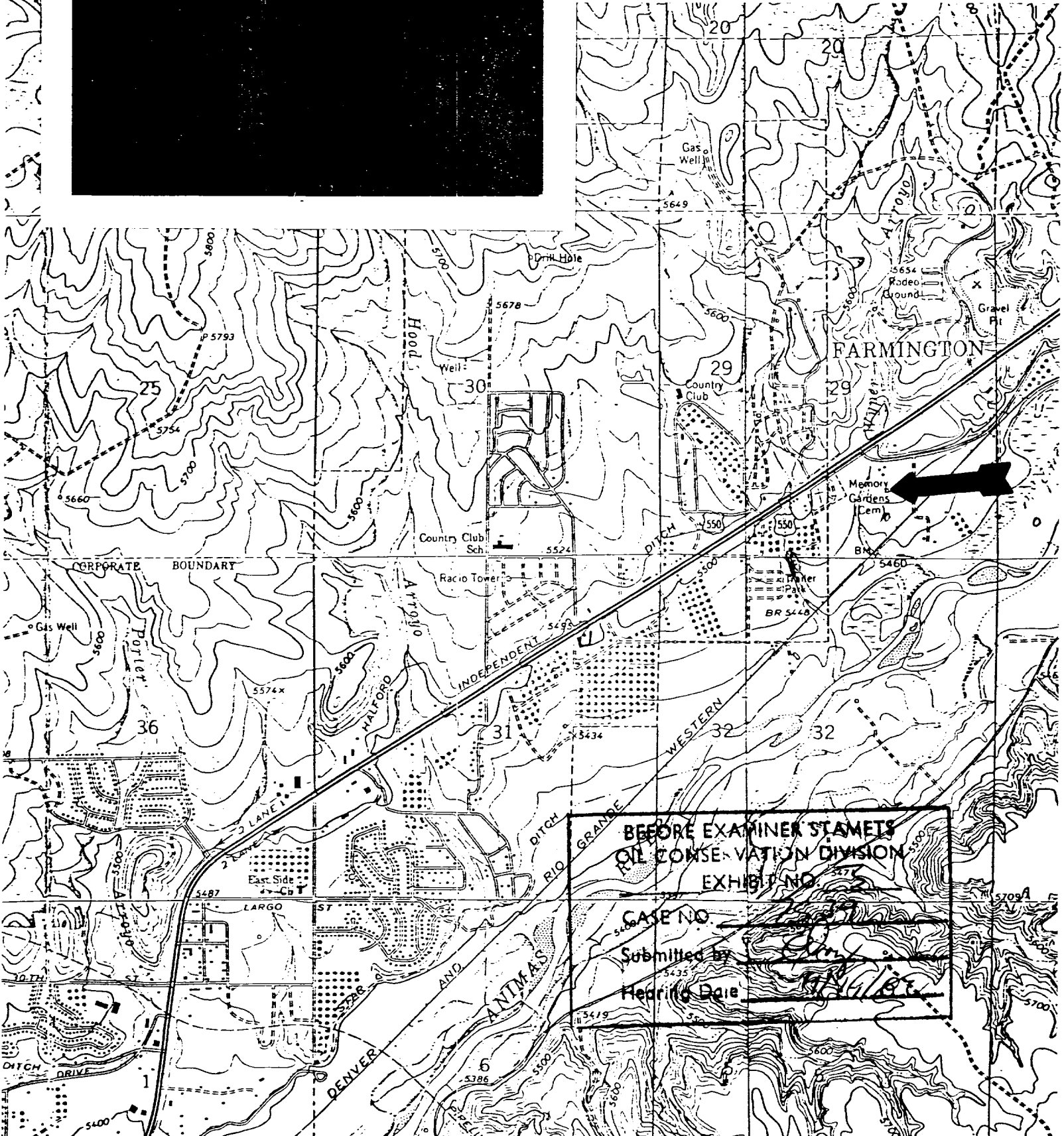


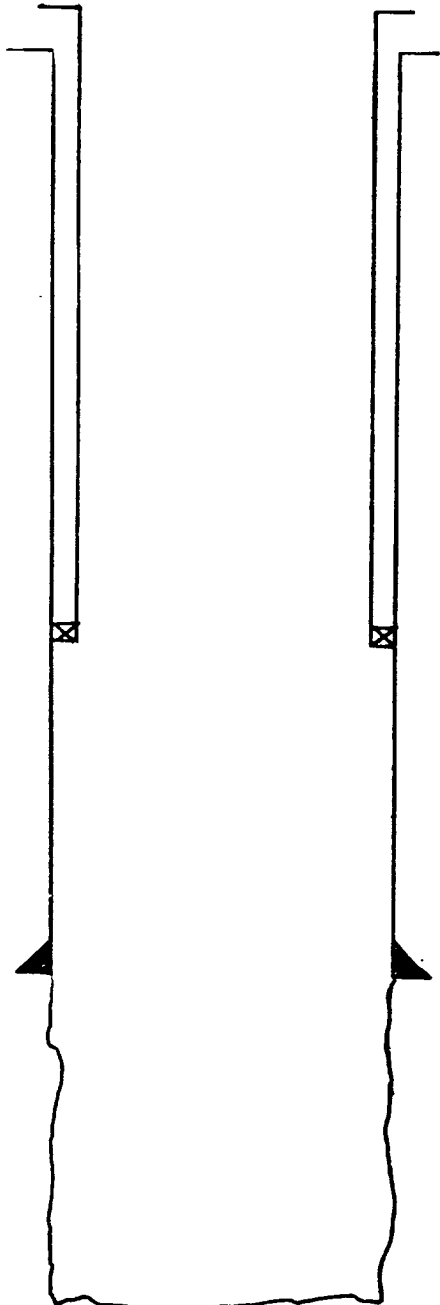
B.M.N.S. COMPANY

Wyper #2

O-29-30N-12W



B.M.N.S. COMPANY
Wyper #2
O-29-30N-12W



3 1/2" Liner @ 560' cmt. circ.

5 1/2" @ 1558' w/38 sx

TD 1588'

| |
|----------------------------------|
| BEFORE EXAMINER STAMETS |
| OIL CONSERVATION DIVISION |
| EXHIBIT NO. _____ |
| CASE NO. _____ |
| Submitted by _____ |
| Hearing Date _____ |

RECEIVED
 DEPARTMENT OF THE ARMY
 WASHINGTON, D. C.
 1954

DIVISION APPROVED PLUGGING PROGRAM

B.M.N.S. Company

Wyper #2

O-29-30N-12W

TD 1588'

5 1/2" casing sat at 1558' w/38 sks.

3 1/2" Liner sat at 560'. Cemented to surface.

All other casing was pulled.

- (1) Clean out hole to 1588'.
- (2) Set a plug 1588'-1480'.
- (3) Perforate 5 1/2" casing at 1320'. Set a plug 1220'-1320' in and outside casing. WOC at least 6 hours.
- (4) Go in hole with tubing and tag plug #2. If cement is above 1240' goto step 5. If not recement to 1220'.
- (5) Perforate 3 1/2" liner and 5 1/2" casing at 270'. Tie on to 3 1/2" liner and break down formation or establish circulation. If circulation is established circulate cement. If not squeeze 100' sacks, leaving 200' of cement inside 3 1/2" liner.
- (6) Set a top plug and erect dry hole marker.
- (7) Fill pits. Clean and level location.

All plugs will be class A,B or C cement with or without an accelerator.