

NUMBER OF COPIES RECEIVED	
DISTRIBUTION	
SANTA FE	3
FILE	1
U.S.G.S.	2
LAND OFFICE	
TRANSPORTER	
OIL GAS	
PRODUCTION OFFICE	
OPERATOR	

NEW MEXICO OIL CONSERVATION COMMISSION
5 NMOC Santa Fe, New Mexico
2 Western Development 1 File
NOTICE OF INTENTION TO DRILL

Form C-101
Revised (12/1/55)

Notice must be given to the District Office of the Oil Conservation Commission and approval obtained before drilling or recompletion begins. If changes in the proposed plan are considered advisable, a copy of this notice showing such changes will be returned to the sender. Submit this notice in QUINTUPPLICATE. One copy will be returned following approval. See additional instructions in Rules and Regulations of the Commission. If State Land submit 6 Copies Attach Form C- 128 in triplicate to first 3 copies of form C-101

Farmington, New Mexico
(Place)

June 19, 1962
(Date)

OIL CONSERVATION COMMISSION
SANTA FE, NEW MEXICO

Gentlemen:

You are hereby notified that it is our intention to commence the Drilling of a well to be known as

Western Development Company of Delaware
(Company or Operator)

Hartman
(Lease)

Well No. 1-23

M
(Unit)

The well is

located 1086 feet from the South line and 832 feet from the

West

line of Section 23, T. 30N, R. 11W, NMPM.

(GIVE LOCATION FROM SECTION LINE) Basin - Dakota Pool, San Juan County

1086 fsl 832 fsl

D	C	B	A
E	F	G	H
L	K	J	I
M	N	O	P

If State Land the Oil and Gas Lease is No.

If patented land the owner is Calvin J. Perkins

Address Route 1, Box 509B, Durango, Colorado

We propose to drill well with drilling equipment as follows: Rotary Tools Surface
to Total Depth Approx. 7000'

The status of plugging bond is State Wide

Drilling Contractor Brinkerhoff Drilling Co.

We intend to complete this well in the Dakota Formation
formation at an approximate depth of 7000' feet.

CASING PROGRAM

We propose to use the following strings of Casing and to cement them as indicated:

Size of Hole	Size of Casing	Weight per Foot	New or Second Hand	Depth	Sacks Cement
<u>12 1/4"</u>	<u>8 5/8"</u>	<u>24#</u>	<u>New</u>	<u>250'</u>	<u>150</u>
<u>7 7/8"</u>	<u>4 1/2"</u>	<u>10.5#</u>	<u>New</u>	<u>7000'</u>	<u>300</u>

If changes in the above plans become advisable we will notify you immediately.

ADDITIONAL INFORMATION (If recompletion give full details of proposed plan of work.)

The 4 1/2" production Csg. will be cemented in two stages. Cement will be brought up from the Csg. Shoe to sufficient height to cover the Point Lookout and a stage set below the Pictured Cliff and cement will be brought up over the Fruitland.

Approved
Except as follows:

6-20, 1962

Sincerely yours,

Western Development Company
(Company or Operator)

By Original signed by T. A. Dugan

Position Consulting Engineer

Send Communications regarding well to

Name T. A. Dugan

Address 1007 N. Dustin, Farmington, New Mexico

OIL CONSERVATION COMMISSION

By

A. R. Hendrick

NEW MEXICO OIL CONSERVATION COMMISSION

Well Location and Acreage Dedication Plat

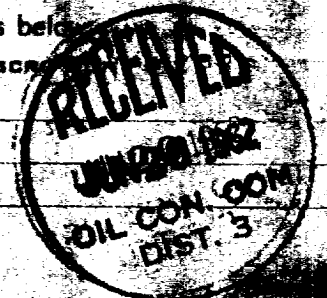
SECTION A.

Date June 20, 1962
 Operator Western Development Company Lease Western
 Well No. 2006 Unit Letter B Section 23 Township 30 North Range 11 West NMPM
 Located 2006 Feet From South Line 832 Feet From West Line
 County San Juan G. L. Elevation 5000 Dedicated Acreage 200 Acres
 Name of Producing Formation Sabote Pool 2006

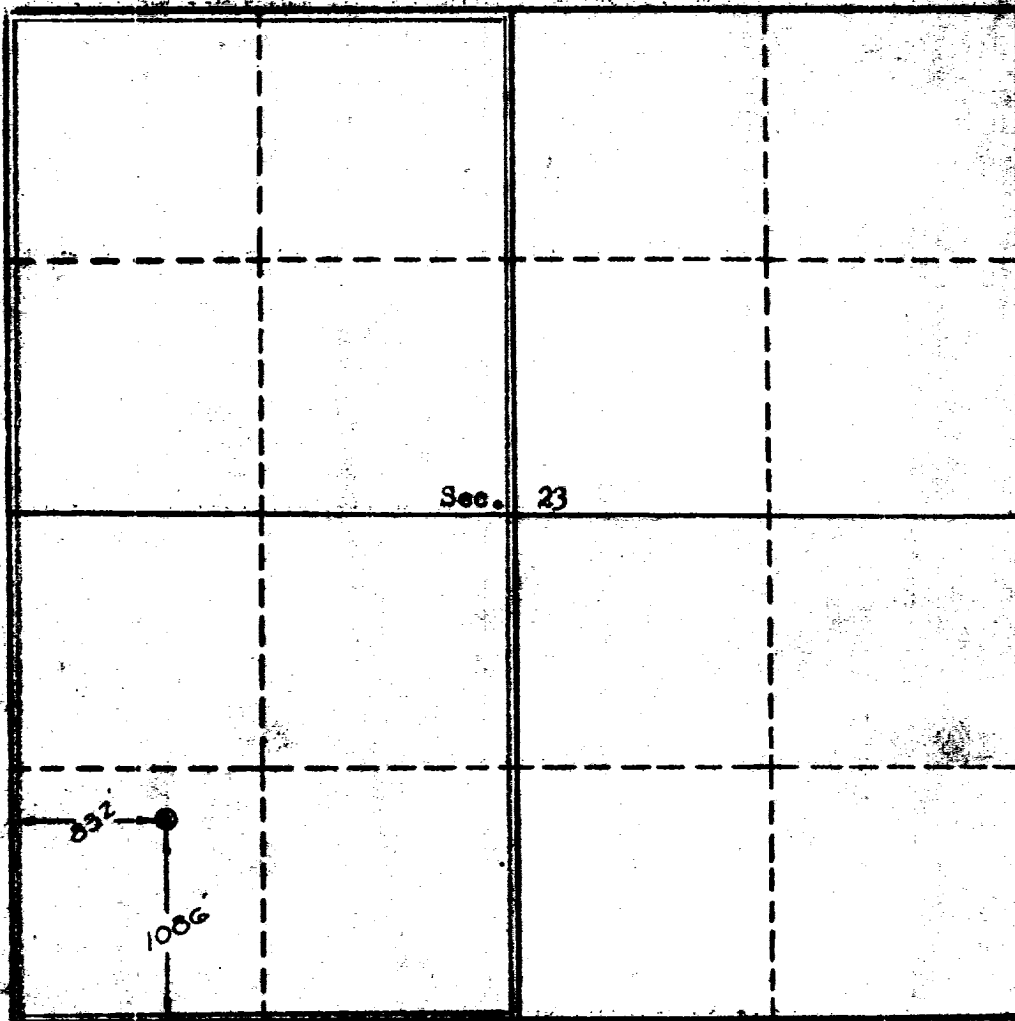
1. Is the Operator the only owner* in the dedicated acreage outlined on the plat below? Yes X No
2. If the answer to question One is "No," have the interests of all the owners been consolidated by communitization agreement or otherwise? Yes No If answer is "Yes," Type of Consolidation
3. If the answer to question Two is "No," list all the owners and their respective interests below:

OWNER

LAND DESCR



SECTION B.



This is to certify that the information in Section A above is true and complete to the best of my knowledge and belief.

Western Development Co.

(OPERATOR)

Original signed by T. A. Degan

(REPRESENTATIVE)

T. A. Degan
1007 N. Austin

(ADDRESS)

Farmington, N.M.

This is to certify that the well location shown on the plat in Section B was plotted from field notes of actual surveys made by me or under my supervision and that the same is true and correct to the best of my knowledge and belief.

Date Surveyed June 20, 1962

Four States Engineering Co.
 FARMINGTON, NEW MEXICO

Edward H. Tolbert

REGISTERED ENGINEER OR
 LAND SURVEYOR

Certificate No. 3608



