

# Geolectric, Inc.

P. O. Box 842 • AZTEC, NEW MEXICO

Phone 214-W  
219-W

## Geological & Electrical Well Logging

COMPANY W.P. GARR  
WELL HARVEY POOLED UNIT #1  
FIELD AZTEC PICTURED CLIFFS  
LOCATION SEC. 9-30N-11W  
COUNTY SAN JUAN STATE NEW MEXICO

COMPANY	W.P. GARR	ELEVATION	
WELL	HARVEY P.U. #1	G. I.	5988
COUNTY	SAN JUAN	D. F.	
STATE	NEW MEXICO	K. B.	
LOCATION SEC.	9-30N-11W	DRILLER	2070
		LOGGER	2070
		T. O.	

Run	ONE	IPS	
Date	10/20/53	Formation	
First Reading	2070	Feet	Surface
Last Reading	107		
Total Feet	1963		
Csg. Gct.	107		
Csg. Driller	97		
Depth Datum	RDB		
Mud	GEL		
Density	9.7		
Viscosity	57		
Temperature	55°F		
Resistance	--		
Bit Size	8-3/4"		

Witnessed by: SHORT Logged by: McCONATHY Geologist: BARNES

Remarks:

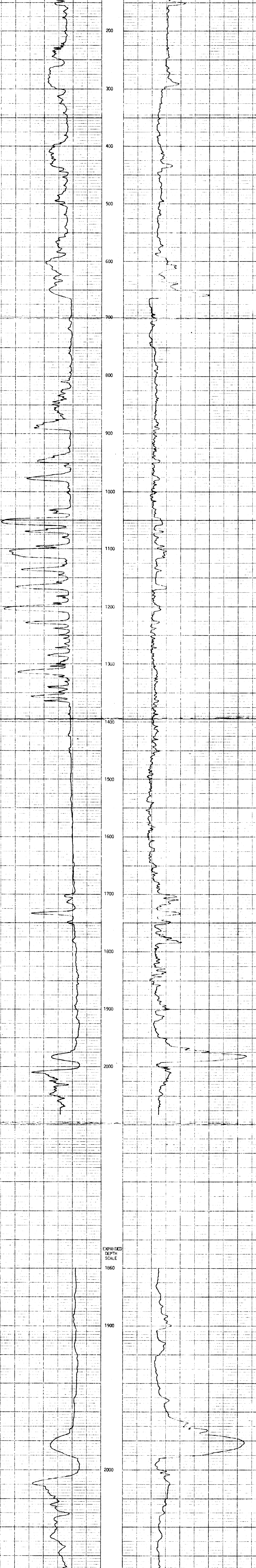
### SELF-POTENTIAL

MILLIVOLTS  
← 20 →

### RESISTIVITY

OHMS  
← 10 →

2" = 100'  
FEET



EXPANDED  
DEPTH  
SCALE