

NEW MEXICO OIL CONSERVATION COMMISSION
Santa Fe, New Mexico

NOTICE OF INTENTION TO DRILL OR RECOMPLETE

Notice must be given to the District Office of the Oil Conservation Commission and approval obtained before drilling or recompletion begins. If changes in the proposed plan are considered advisable, a copy of this notice showing such changes will be returned to the sender. Submit this notice in QUINTUPLICATE. One copy will be returned following approval. See additional instructions in Rules and Regulations of the Commission.

Aztec, New Mexico
(Place)

July 19, 1954
(Date)

OIL CONSERVATION COMMISSION
SANTA FE, NEW MEXICO

Gentlemen:

You are hereby notified that it is our intention to commence the (Drilling) (Recompletion) of a well to be known as

W. P. Carr

(Company or Operator)

McGrath

(Lease)

, Well No. 1, in (Unit) The well is

located 1786 feet from the West line and 1760 feet from the North line of Section 7, T. 30 N., R. 11 W., NMPM.

(GIVE LOCATION FROM SECTION LINE) Aztec Pictured Cliff Pool, San Juan County

If State Land the Oil and Gas Lease is No.

If patented land the owner is.

Address.

We propose to drill well with drilling equipment as follows: We will set surface casing with cable tools, All other drilling with rotary

The status of plugging bond is approved

Drilling Contractor Greer-Smith Drilling Corp.

315 1/2 W. Main St.

Farmington, New Mexico

We intend to complete this well in the Pictured Cliffs formation formation at an approximate depth of 2050 feet.

CASING PROGRAM

We propose to use the following strings of Casing and to cement them as indicated:

Size of Hole	Size of Casing	Weight per Foot	New or Second Hand	Depth	Sacks Cement
12-5/8	8-5/8	24	New	80-150	Circulate
7-7/8	5-1/2	15.5	New	2050	50-150 sx.

If changes in the above plans become advisable we will notify you immediately.

ADDITIONAL INFORMATION (If recompletion give full details of proposed plan of work.)

We will drill thro' the Pictured Cliff formation with rotary tools. After electric logging we will set 5 1/2" casing on top the producing zone. We will shoot the indicated section using 2 1/2 to 4 cts solid nitroglycerin per foot

Approved
Except as follows:

8-9-54, 1954

Sincerely yours,

W. P. Carr

(Company or Operator)

By

Position Supt.

Send Communications regarding well to

Name W. P. Carr

Address 6700 Forest lane

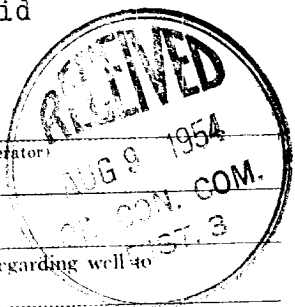
Dallas 30, Texas

OIL CONSERVATION COMMISSION

By

Title

Oil and Gas Inspector Dist. #3.



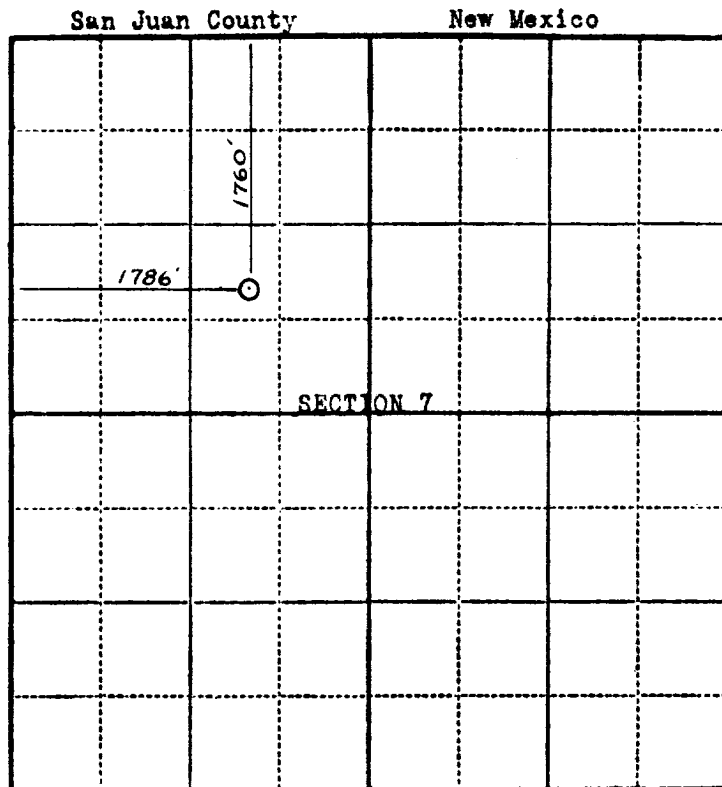
Company W. P. CARR

Lease McGRATH Well No. 1

Sec. 7 T. 30 N R. 11 W N.M.P.M.

Location 1760 feet from north line; 1786 feet
from west line.

Elevation: 5670.3 GL



Scale—4 inches equal 1 mile.

This is to certify that the above plat was prepared from field notes of actual surveys made by me or under my supervision and that the same are true and correct to the best of my knowledge and belief.

Stephen H. Kinney
STEPHEN H. KINNEY
Registered Professional
Engineer and Land Surveyor

Surveyed July 8, 19 54

Seal:



NEW MEXICO
OIL CONSERVATION COMMISSION

Gas Well Plat

Date JULY 19, 1954

W. P. CARR

Operator

McGRATH

Lease

No. 1

Well No.

Name of Producing Formation PICTURED CLIFF Pool AZTES PICTURED CLIFF

No. Acres Dedicated to the Well 160

Indicate land status and show ownership

SECTION 7 TOWNSHIP 30 N. RANGE 11 W.

WILLIAM H. AND CARLOTTA C. CHRISHAN	FEDERAL		
JAMES F. AND LELA SCOTT	C. R. AND FRANCES HANCOCK A		

I hereby certify that the information given above is true and complete to the best of my knowledge.

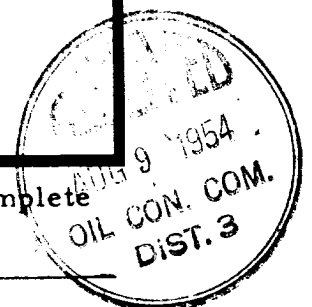
A. CLYDE AND EDNA UTTON
4 ACRES

Name C. R. Short

Position Supt

Representing W. P. Carr

Address 6706 Forest Lane Dallas Tex



(over)

OIL CONSERVATION COMMISSION		
AZTEC DISTRICT OFFICE		
No. Copies Received <u>5</u>		
DISTRIBUTION		
	NO. FURNISHED	
Operator	<u>1</u>	
Santa Fe	<u>1</u>	
Proration Office		
State Land Office		
U. S. G. S.	<u>2</u>	
Transporter		
File	<u>1</u>	<input checked="" type="checkbox"/>