

NEW MEXICO OIL CONSERVATION COMMISSION
Santa Fe, New Mexico

NOTICE OF INTENTION TO DRILL OR RECOMPLETE

Notice must be given to the District Office of the Oil Conservation Commission and approval obtained before drilling or recompletion begins. If changes in the proposed plan are considered advisable, a copy of this notice showing such changes will be returned to the sender. Submit this notice in QUINTUPLICATE. One copy will be returned following approval. See additional instructions in Rules and Regulations of the Commission.

OIL CONSERVATION COMMISSION
SANTA FE, NEW MEXICO

Gentlemen:

You are hereby notified that it is our intention to commence the (Drilling) (Recompletion) of a well to be known as

(Company or Operator) _____, Well No. 2, in _____, The well is located _____ feet from the _____ line and _____ feet from the _____ line of Section _____, T. _____, R. _____, NMPM.
(GIVE LOCATION FROM SECTION LINE) _____ Pool, _____ County

D	C	B	A
E	F	G	H
L	K	J	I
M	N	O	P

If State Land the Oil and Gas Lease is No. _____

If patented land the owner is _____

Address _____

We propose to drill well with drilling equipment as follows: _____

The status of plugging bond is _____

Drilling Contractor _____

We intend to complete this well in the _____ formation at an approximate depth of _____ feet.

CASING PROGRAM

We propose to use the following strings of Casing and to cement them as indicated:

Size of Hole	Size of Casing	Weight per Foot	New or Second Hand	Depth	Sacks Cement

If changes in the above plans become advisable we will notify you immediately.

ADDITIONAL INFORMATION (If recompletion give full details of proposed plan of work.)

We will drill the well with _____ inch casing point and when completed with cable tool and about 3 quarts of oil to the _____.

Approved _____, 19____
Except as follows:

Sincerely yours,

By _____ (Company or Operator)

Position _____

Send Communications regarding well to

Name _____

Address _____

OIL CONSERVATION COMMISSION
By _____
Oil and Gas Inspector Dist. #3
Title _____

100-111	W. W. Chapman Alto, New Mexico	60 acres.
100-112	W. W. Chapman Alto, New Mexico	32 acres.
100-113	C. C. Chapman and James C. Chapman Alto, New Mexico	2 acres.
100-114	William W. Chapman Alto, New Mexico	2 acres.
100-115	Robert H. Winston and Ruby Winston Alto, New Mexico	4 acres.
100-116	Federal lease to. 100/116 United States of America, conceded by Leach Oil and Gas Company	40 acres.

Company W. P. Carr

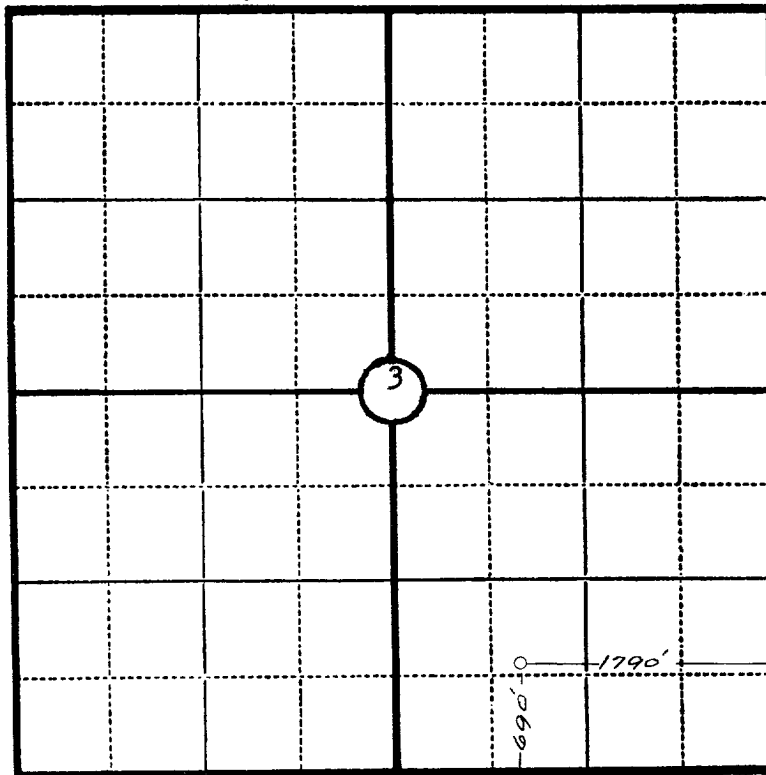
Lease..... Well No.....

Sec. 3, T. 30 N., R. 11 W., N.M.P.M..

Location 690' from the South line and 1790' from the East line.

Elevation 5726 Ungraded ground.

San Juan County New Mexico



Scale—4 inches equal 1 mile.

This is to certify that the above plat was prepared from field notes of actual surveys made by me or under my supervision and that the same are true and correct to the best of my knowledge and belief.

Seal:

Registered Professional
Engineer and Land Surveyor.

James P. Leese
N. Mex. Reg. No. 1463

Surveyed August 28, 1953

OIL CONSERVATION COMMISSION		
AZTEC DISTRICT OFFICE		
No. Copies Received		7
DISTRIBUTION		
	NO. FURNISHED	
Operator	2	
Santa Fe	1	
Proration Office		
State Land Office		
U. S. G. S.	1	
Transporter	1	
File		