

State of New Mexico
Energy, Minerals and Natural Resources Department
Oil Conservation Division

Sundry Notices and Reports on Wells

1. Type of Well GAS	API # (assigned by OCD)
2. Name of Operator MERIDIAN OIL	5. Lease Number E-1196-3
3. Address & Phone No. of Operator PO Box 4289, Farmington, NM 87499 (505) 326-9700	6. State Oil&Gas Lease E-1196-3
4. Location of Well, Footage, Sec., T, R, M 890'FSL, 1120'FWL Sec.32, T-31-N, R-8-W, NMPM, San Juan County	7. Lease Name/Unit Name EPNG Com A
	8. Well No. 2
	9. Pool Name or Wildcat Blanco Mesa Verde
	10. Elevation:

Type of Submission

☒ Notice of Intent
☐ Subsequent Report
☐ Final Abandonment

Type of Action

<input type="checkbox"/> Abandonment	<input type="checkbox"/> Change of Plans
<input type="checkbox"/> Recompletion	<input type="checkbox"/> New Construction
<input type="checkbox"/> Plugging Back	<input type="checkbox"/> Non-Routine Fracturing
<input type="checkbox"/> Casing Repair	<input type="checkbox"/> Water Shut off
<input type="checkbox"/> Altering Casing	<input type="checkbox"/> Conversion to Injection
<input checked="" type="checkbox"/> Other - pay add	

13. Describe Proposed or Completed Operations

It is intended to perforate and stimulate the Menefee interval and add to the existing Cliff House and Point Lookout in this well per the attached procedure and wellbore diagram.

RECEIVED

DEC 1 1993

OIL CON. DIV.
DIST. 1

SIGNATURE *[Signature]* (JAS) Regulatory Affairs November 30, 1993

(This space for State Use)
Approved by *[Signature]* Title DEPUTY OIL & GAS INSPECTOR, DIST. #3 Date DEC - 1 1993

Pertinent Data Sheet - EPNG Com A #2 (Sidetracked)

Location: 890' FSL, 1120' FWL, Section 32, T31N R08W, San Juan County, N.M.

Field: Blanco Mesaverde

Elevation: 6041' GL

TD: 5520'

PBTD: 5465'

GWl: 50.00000%

NRI: 42.50000%

Completed: 07/07/53

DP Number: 48740A MV

Initial Potential:

4495 MCFD

Casing Record:

<u>Hole Size</u>	<u>Csg Size</u>	<u>Wt. & Grade</u>	<u>Depth Set</u>	<u>Cement</u>	<u>Top/Cmt.</u>
13-3/4"	9-5/8"	25.4# J-55 8rd	180'	125 sxs	Surface/Circ
8-3/4"	7"	20# & 23# J-55 8rd	4600'	300 sxs	TOC 2880' (temp. survey)
6-1/4"	4-1/2"	10.5# J-55	5520' KB	125 sxs	TOC 4260' (Calc.)

Tubing Record:

2-3/8" 4.7#, J-55 8rd 5361' (170 joints)

Formation Tops:

Ojo Alamo	1682'	Lewis Shale	2945'
Kirtland	1758'	Cliffhouse	4625'
Fruitland Coal	2553'	Menefee	4756'
Pictured Cliffs	2871'	Mancos	5209'

Logging Record: ES, Gamma Ray-Neutron, Ind., FDC-GR, Temperature

Stimulation: **Openhole - Original Completion.**
Shot 4695'-5209' with 1331 quarts SNG.

Workover History: Workover 12/3/66. Cut original tubing @ 4692', left 608' fish in open hole. Set cement retainer @ 4445', squeezed openhole with 200 sxs cement. Drilled cement to 4609', 3/4" @ 4580', 4-3/4" @ 4629', 5" @ 4629'. Reamed, 4-3/4" hole to 6-1/4", drilling with gas. Reached TD of 5520', 2" @ 5520. Ran 172 joints, 4-1/2" casing @ 5520' with 125 sxs cement. Perfed Lower Point Lookout 5236'-40', 5270'-74', 5294'-98', 5342'-46', 5393'-97', 5446'-52 with 12 SPZ, frac with 17,500# 20/40 sand, 25,200 gallons water. Perfed Point Lookout 5113'-19', 5154'-60', 5201'-13' with 18 SPZ, frac with 40,000# 20/40 sand, 40,000 gallons water. Set BP @ 4765'. Perfed Cliffhouse 4712'-26', 4738'-52' with 21 SPZ, frac with 20,000# 20/40 sand, 20,000 gallons water. Drilled bridge plugs. Ran 2-3/8" tubing @ 5361'.

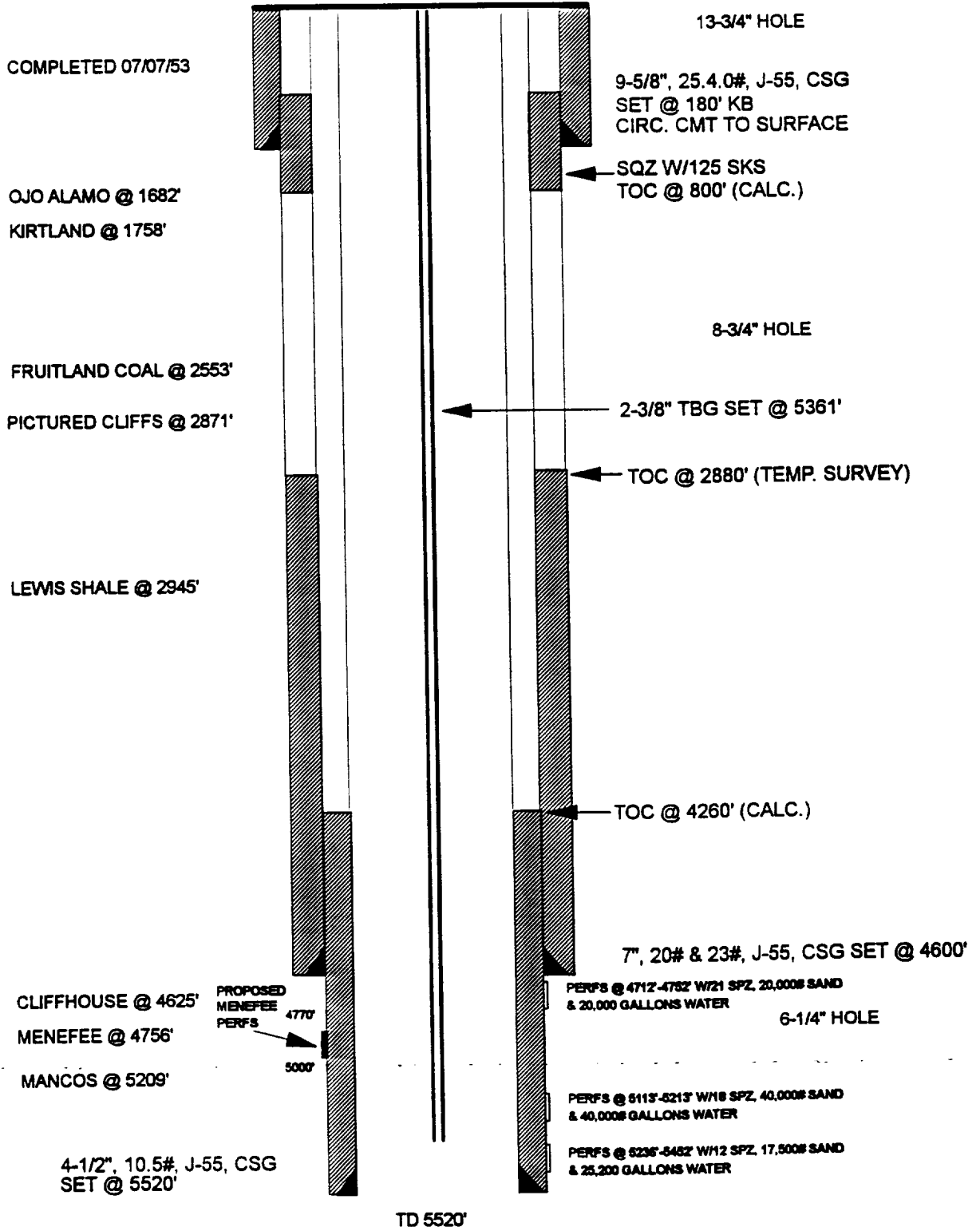
Production History: Initial Deliverability - 885 MCFGD 0 BWPD
Latest Deliverability - 300 MCFGD 0.2 BWPD

Transporter: EPNG

EPNG COM A #2 **CURRENT AND PROPOSED**

BLANCO - MESAVERDE

UNIT M, SECTION 32, T31N-R08W, SAN JUAN COUNTY, NEW MEXICO



**EPNG Com A #2
SW/4, Section 32, T31N, R08W
Menefee Pay Add**

**☛ Contact BLM and NMOCD prior to performing work on this well ☛
Comply with all BLM, NMOCD, and MOI rules and regulations.**

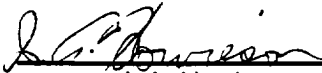
1. Test location rig anchors and repair if necessary. Blow down tubing. MIRU. NU BOP, blooie line, and relief line.
2. Install 7 X 400 bbl tanks and fill with 2% KCl water for fracture stimulation. Add 5 #'s biocide per tank before filling. Place fire and safety equipment in strategic locations.
3. Pressure test BOP for 15 minutes. TOOH with 170 jts. of 2-3/8" tubing and lay down. Visually inspect and replace any bad joints. TIH with 3-7/8" bit and 4-1/2"-10.5# casing scraper on 2-7/8" slimhole workstring and clean out to PBD @ 5465'. TOOH.
4. RU wireline. Set RBP above Pt. Lookout @ 5100'. Spot approximately 10' of sand on top of RBP w/wireline bailer. Run GR-CBL-CCL in 4-1/2" longstring from RBP to TOC @ approximately 4260' (calc) *Note: Fluid level may not be high enough to establish cement top.* Evaluate GR-CBL-CCL and send copy to production engineering.
5. TIH with 4-1/2" packer on 2-7/8" workstring/fracstring. Set packer @ 4680'. *Test casing to 1000 psi for 15 minutes. Release packer, TIH to 5000', approx. 100' above RBP @ 5100' and pressure test RBP to 3800 psi for 15 minutes. Unseat pkr. and spot 250 gallons of 7-1/2% inhibited HCL acid w/additives. TOOH.
**If pressure test fails, prepare to locate holes and repair casing. Contact production engineering and a casing repair procedure will be submitted.*
6. RU wireline. Perforate the following Menefee intervals top down, with a 3-1/8" HSC, 12 gram OWEN charges @ 1 SPF (.31" hole dia., and 12.02" DP).

4778'	4823'	4879'	4926'	4988'
4788'	4842'	4882'	4938'	4994'
4805'	4846'	4886'	4945'	5001'
4812'	4848'	4894'	4960'	5042'
4816'	4870'	4910'	4980'	

Total: 24 holes

7. TIH with 2-7/8" workstring and 4-1/2" packer. Set packer @ 4760' (above Menefee, below Cliffhouse) and prepare to breakdown perforations.
8. RU stimulation company. Breakdown and balloff w/ 1200 gallons of 7-1/2% HCl @ 4 bbl/min. with 1gal/1000 gal clay control, 4/1000 silt suspender, 1/1000 inhibitor and 5/1000 sequestering agent. Drop a total of 50 - 7/8" RCN ball sealers spaced evenly throughout the job w/ 5 ball slugs every 10 balls dropped. Record injection rate and all breakdown pressures throughout job.
9. Release packer and knock off ball sealers to top of sand on RBP @ 5100'. TOOH w/ packer to 4760' and set. Prepare to fracture stimulate the well.

10. RU stimulation company. Hold safety meeting. Pressure test surface lines to 6000 psi (1000 psi over maximum allowable treating pressure but no greater than working pressure of surface lines). Maximum treating pressure is 5000 psi. Fracture stimulate well w/ 30 # gel according to attached procedure.
11. Flow back well until returns diminish. Release packer and TOOH. TIH w/notched collar on 2-7/8" workstring and reverse out to RBP until sand returns are clean and water production is minimal. Obtain pitot gauge. TOOH with workstring. TIH with packer and workstring. Set packer above Menefee @ 4760' and obtain pitot gauge. TOOH.
12. TIH with retrieving head on 2-7/8" workstring and reverse out to bridge plug. Retrieve bridge plug. TOOH and lay down workstring.
13. TIH with 2-3/8" production tubing and SN one joint off bottom of string. CO to 5465'. When fluid production becomes negligible, land tubing at 5361'. Obtain final pitot gauge.
14. ND BOP. RDMO.


J. A. Howieson

Vendors:

Packer Rental & Bridge Plugs:
Wireline Services:
Stimulation:

Baker Service Tools (325-0216)
Basin Perforating (327-5245)
Smith Energy Services (327-7281)

epngpro.doc
JAS/jas