

*File*



Page 1 of 1  
File 2-2091

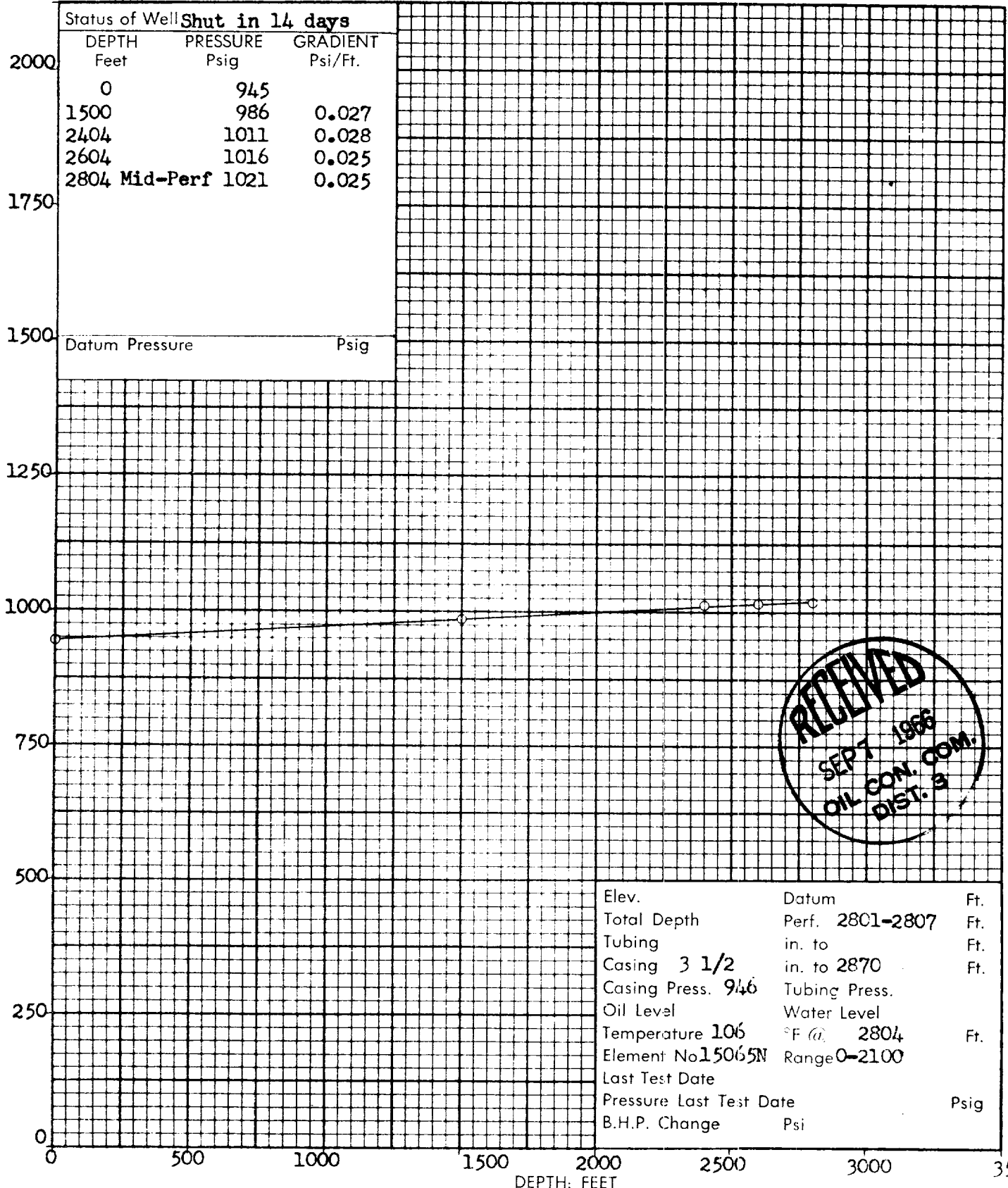
*f. 19-30-9*

Company TENNECO OIL COMPANY Lease FLORANCIE Well No. 90  
 Field BLANCO PICTURED CLIFFS County SAN JUAN State NEW MEXICO  
 Formation PICTURED CLIFFS Test Date AUGUST 21, 1966

Status of Well <b>Shut in 14 days</b>		
DEPTH Feet	PRESSURE Psig	GRADIENT Psi/Ft.
0	945	
1500	986	0.027
2404	1011	0.028
2604	1016	0.025
2804 Mid-Perf	1021	0.025

Datum Pressure \_\_\_\_\_ Psig

PRESSURE POUNDS PER SQUARE INCH GAUGE



**RECEIVED**  
 SEPT 1966  
 OIL CON. COM.  
 DIST. 3

Elev.	Datum	Ft.
Total Depth	Perf. 2801-2807	Ft.
Tubing	in. to	Ft.
Casing 3 1/2	in. to 2870	Ft.
Casing Press. 946	Tubing Press.	
Oil Level	Water Level	
Temperature 106	°F @ 2804	Ft.
Element No 15065N	Range 0-2100	
Last Test Date		
Pressure Last Test Date		Psig
B.H.P. Change	Psi	