

*File  
Cards + Label K*

UNITED STATES  
DEPARTMENT OF THE INTERIOR  
GEOLOGICAL SURVEY

SUBMIT IN TRIPLICATE\*  
(Other instructions on  
reverse side)

Form approved.  
Budget Bureau No. 42-B1425.

APPLICATION FOR PERMIT TO DRILL, DEEPEN, OR PLUG BACK

1a. TYPE OF WORK

DRILL ☒

DEEPEN ☐

PLUG BACK ☐

b. TYPE OF WELL

OIL  
WELL ☐

GAS  
WELL ☒

OTHER

SINGLE  
ZONE ☒

MULTIPLE  
ZONE ☐

2. NAME OF OPERATOR

Tenneco Oil Company

3. ADDRESS OF OPERATOR

P. O. Box 1714, Durango, Colorado 81301

4. LOCATION OF WELL (Report location clearly and in accordance with any State requirements.)\*  
At surface

1185' FNL 790' FEL

At proposed prod. zone

Unit Letter "A"

14. DISTANCE IN MILES AND DIRECTION FROM NEAREST TOWN OR POST OFFICE\*

16. DISTANCE FROM PROPOSED\*  
LOCATION TO NEAREST  
PROPERTY OR LEASE LINE, FT.  
(Also to nearest drlg. unit line, if any)

16. NO. OF ACRES IN LEASE

160

18. DISTANCE FROM PROPOSED LOCATION\*  
TO NEAREST WELL, DRILLING, COMPLETED,  
OR APPLIED FOR, ON THIS LEASE, FT.

18. PROPOSED DEPTH

3000'

17. NO. OF ACRES ASSIGNED  
TO THIS WELL

160 NE/4

20. ROTARY OR CABLE TOOLS

Rotary

21. ELEVATIONS (Show whether DF, RT, GR, etc.)

5933 GR

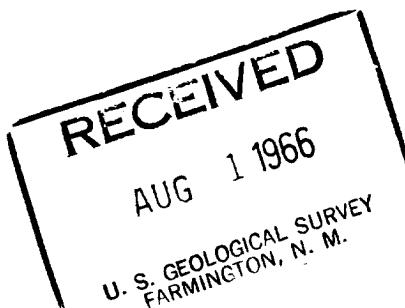
22. APPROX. DATE WORK WILL START\*

August 3, 1966

23. PROPOSED CASING AND CEMENTING PROGRAM

SIZE OF HOLE	SIZE OF CASING	WEIGHT PER FOOT	SETTING DEPTH	QUANTITY OF CEMENT
12-1/4"	8-5/8"	20#	150	Circulate to surface
7-7/8"	3-1/2"	9.2#	3000	Circulate to surface

We propose to drill w/rotary to aprx. T.D. 3000'. Log, run casing as shown above.  
WOG. Perforate and frac and complete as single Blanco Pictured Cliffs gas well.  
Conduct deliverability test.



IN ABOVE SPACE DESCRIBE PROPOSED PROGRAM: If proposal is to deepen or plug back, give data on present productive zone and proposed new productive zone. If proposal is to drill or deepen directionally, give pertinent data on subsurface locations and measured and true vertical depths. Give blowout preventer program, if any.

24.

SIGNED

*Harold C. Nichols*

TITLE Senior Production Clerk

DATE July 28, 1966

(This space for Federal or State office use)

PERMIT NO.

APPROVAL DATE

APPROVED BY

TITLE

DATE

CONDITIONS OF APPROVAL, IF ANY:

5 USGS, Frmg., 1 Cont., Dur., 1 Aztec O&G, 1 TOC File.

\*See Instructions On Reverse Side

**NEW MEXICO OIL CONSERVATION COMMISSION  
WELL LOCATION AND ACERAGE DEDICATION PLAT**

All distances must be from the outer boundaries of the Section

Operator <b>TENNECO OIL COMPANY</b>		Lease <b>RIDDLE</b>		Well No. <b>4</b>	
Unit Letter <b>A</b>	Section <b>21</b>	Township <b>30 North</b>	Range <b>9 West</b>	County <b>San Juan</b>	

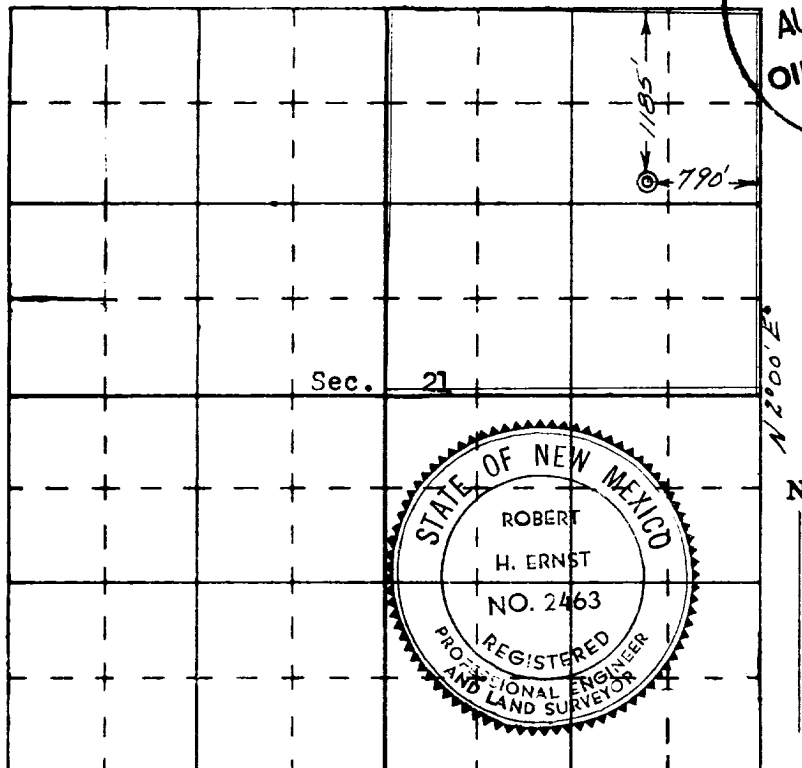
Actual Footage Location of Well:  
**1185** feet from the **North** line and **790** feet from the **East** line  
 Ground Level Elev. \_\_\_\_\_ Producing Formation \_\_\_\_\_  
**5933' ungraded** Blanco Pictured Cliffs Blanco Pictured Cliffs Dedicated Average **160 NE/4** Acres

- Outline the acreage dedicated to the subject well by colored pencil or hatchure marks on the plat below
- If more than one lease is dedicated to the well, outline each and identify the ownership thereof (both as to working interest and royalty).
- If more than one lease of different ownership is dedicated to the well, have the interests of all owners been consolidated by communitization, unitization, forced-pooling, etc?

( ) Yes ( ) No If answer is "yes," type of consolidation \_\_\_\_\_

If answer is "no," list the owners and tract descriptions which have actually consolidated (Use reverse side of this form if necessary) \_\_\_\_\_

No allowable will be assigned to the well until all interests have been consolidated (by communitization, unitization, forced-pooling, or otherwise) or until a non standard unit, eliminating such interests, has been approved by the Commission



**CERTIFICATION**

I hereby certify that the information contained herein is true and complete to the best of my knowledge and belief.

*Harold C. Nichols*  
 Name **Harold C. Nichols**  
 Position **Senior Production Clerk**  
 Company **Tenneco Oil Company**  
 Date **July 28, 1966**

I hereby certify that the well location shown on this plat was plotted from field notes of actual surveys made by me or under my supervision, and that the same is true and correct to the best of my knowledge and belief.

**17 June 1966**  
 Date Surveyed  
*Robert H. Ernst*  
 Registered Professional Engineer  
 and/or Land Surveyor  
**Robert H. Ernst**  
**N. Mex. PE & LS 2463**  
 Certificate No. \_\_\_\_\_