

submitted in lieu of Form 3160-5

UNITED STATES  
DEPARTMENT OF THE INTERIOR  
BUREAU OF LAND MANAGEMENT

Sundry Notices and Reports on Wells

1. Type of Well

GAS

2. Name of Operator

**BURLINGTON  
RESOURCES**

OIL & GAS COMPANY

3. Address & Phone No. of Operator

PO Box 4289, Farmington, NM 87499 (505) 326-9700

4. Location of Well, Footage, Sec., T, R, M

1500' FNL, 810' FWL, Sec. 1, T-30-N, R-10-W, NMPM

5. Lease Number  
SF-078208

6. If Indian, All. or  
Tribe Name

7. Unit Agreement Name

8. Well Name & Number  
Sunray B #4

9. API Well No.  
30-045-20765

10. Field and Pool  
Blanco Pict'd Cliffs

11. County and State  
San Juan Co, NM

12. CHECK APPROPRIATE BOX TO INDICATE NATURE OF NOTICE, REPORT, OTHER DATA

Type of Submission

☒ Notice of Intent  
☐ Subsequent Report  
☐ Final Abandonment

Type of Action

☒ Abandonment  
☐ Recompletion  
☐ Plugging Back  
☐ Casing Repair  
☐ Altering Casing  
☐ Other -  
☐ Change of Plans  
☐ New Construction  
☐ Non-Routine Fracturing  
☐ Water Shut off  
☐ Conversion to Injection

13. Describe Proposed or Completed Operations

It is intended to plug and abandon the subject well according to the attached procedure and wellbore diagram.

14. I hereby certify that the foregoing is true and correct.

Signed [Signature] Title Regulatory Supervisor Date 11/1/00  
TLW

(This space for Federal or State Office use)

APPROVED BY \_\_\_\_\_ Title \_\_\_\_\_ Date 11/16/00

CONDITION OF APPROVAL, if any:

Title 18 U.S.C. Section 1001, makes it a crime for any person knowingly and willfully to make to any department or agency of the United States any false, fictitious or fraudulent statements or representations as to any matter within its jurisdiction.

NMOCD

**Sunray B #4**  
**Blanco Pictured Cliffs**  
**AIN #5240801**  
**1500' FNL and 810' FWL, Section 1, T30N, R10W**  
**Latitude/Longitude: 36° 52.428' / 107° 50.3922'**  
**San Juan County, New Mexico**  
**PLUG AND ABANDONMENT PROCEDURE**  
**10/24/00**

Note: All cement volumes use 100% excess outside pipe and 50' excess inside pipe. The stabilizing wellbore fluid will be 8.3 ppg, sufficient to balance all exposed formation pressures.

1. Install and/or test rig anchors. Prepare blow pit. Comply with all NMOCD, BLM and Burlington safety rules and regulations. ND wellhead and NU BOP, test BOP.
2. Prepare and tally a 1-1/4" tubing workstring. Round-trip a 2-7/8" gauge ring or casing scraper to 3288'.
3. **Plug #1 (Pictured Cliffs perforations and Fruitland, Kirtland and Ojo Alamo tops, 3288' – 1935')**: Set a 2-7/8" wireline CIBP at 3288'. TIH with open ended tubing and tag CIBP. Load casing with water and circulate well clean. Pressure test casing to 500#. If casing does not test, then spot or tag subsequent plugs as necessary. Mix 45 sxs Class B cement and spot a balanced plug (in three 15 sxs stages) inside the casing above the CIBP to isolate the Pictured Cliffs perforations and to cover through the Ojo Alamo top. PUH and WOC if the casing did not test. PUH to 600'.
4. **Plug #2 (Nacimiento, 600' – 500')**: Mix 8 sxs Class B cement and spot a balanced plug to cover the Nacimiento top. TOOH and LD the tubing.
5. **Plug #3 (8-5/8" surface casing, 188' - Surface)**: Perforate 2 bi-wire squeeze holes at 188'. Establish circulation to surface. Mix and pump approximately 60 sxs cement and pump down the 2-7/8" casing, circulate good cement to surface out the bradenhead. Shut in well and WOC.
6. ND BOP and cut off casing below surface. Fill casing and annulus as necessary. Install P&A marker with cement to comply with regulations. RD, move off location, cut off anchors and restore location.

Recommended: Mike L. Lohman for JLD  
Operations Engineer

Approval: Bruce W. Boyer 10-31-00  
• Drilling Superintendent

**Sunray B #4**  
**Blanco Pictured Cliffs**  
**AIN #5240801**  
 1500' FNL and 810' FWL, Section 1, T30N, R10W  
 Latitude/Longitude: 36° 52.428' / 107° 50.3922'  
 San Juan County, New Mexico  
**PLUG AND ABANDONMENT PROCEDURE**  
 10/24/00

Today's Date: 10/24/00  
 Spud: 4/21/71  
 Completed: 5/13/71  
 Elevation: 6626' GL

12-1/4" hole

Nacimiento @ 550'

Casing leak  
 720' – 750',  
 Sqzd with  
 150 sxs (Jul '78)

Ojo Alamo @ 1985'

Kirtland @ 2145'

Fruitland @ 2995'

Pictured Cliffs @ 3335'

6-3/4" hole

PBTD 3460'

TD 3470'

8-5/8" 24#, J-55 Casing set @ 138'  
 Cmt w/90 sxs (Circulated to Surface)

### WELL HISTORY

Jul '78: Set CIBP at 3200'; isolate casing leak from 2305' to 2450'; squeezed with 177 cf cement; new leak from 720' to 750', squeezed with 177 cf, DO and PT OK; re-squeeze leak at 2305' to 2450' with 83 cf; PT held OK; CO well.

Oct '82: Set CIBP at 3210' – T&A

Jul '83: Set CIBP at 3210'; isolate casing leak from 919' to 2238', squeezed with 100 sxs; DO and PT OK; drill CIBP and push to 3400'.

Casing leak 1919' – 2238',  
 Sqzd with 100 sxs (Jul '83)

Casing leak 2305' – 2450',  
 Sqzd with 150 sxs and then  
 75 sxs cement. (Jul '78)

TOC @ 2695' (T.S.)

Pictured Cliffs Perforations:  
 3338' – 3352'

2-7/8" 6.4#, J-55 Casing set @ 3470'  
 Cement with 280 sxs

**Sunray B #4**  
**Blanco Pictured Cliffs**  
**AIN #5240801**  
**1500' FNL and 810' FWL, Section 1, T30N, R10W**  
**Latitude/Longitude: 36° 52.428' / 107° 50.3922'**  
**San Juan County, New Mexico**  
**PLUG AND ABANDONMENT PROCEDURE**  
**10/24/00**

Today's Date: 10/24/00  
 Spud: 4/21/71  
 Completed: 5/13/71  
 Elevation: 6626' GL

12-1/4" hole

8-5/8" 24#, J-55 Casing set @ 138'  
 Cmt w/90 sxs (Circulated to Surface)

Perforate @ 188'      **Plug #3** 188' - Surface  
 Cmt with 60 sxs Class B

Nacimiento @ 550'

**Plug #2** 600' - 500'  
 Cmt with 8 sxs Class B

Casing leak 720' - 750',  
 Sqzd with 150 sxs (Jul '78)

Ojo Alamo @ 1985'

Casing leak 1919' - 2238',  
 Sqzd with 100 sxs (Jul '83)

Kirtland @ 2145'

Casing leak 2305' - 2450',  
 Sqzd with 150 sxs and then  
 75 sxs cement. (Jul '78)

TOC @ 2695' (T.S.)

Fruitland @ 2995'

**Plug #1** 3288' - 1935'  
 Cmt with 45 sxs Class B,  
 (three 15 sxs stages).

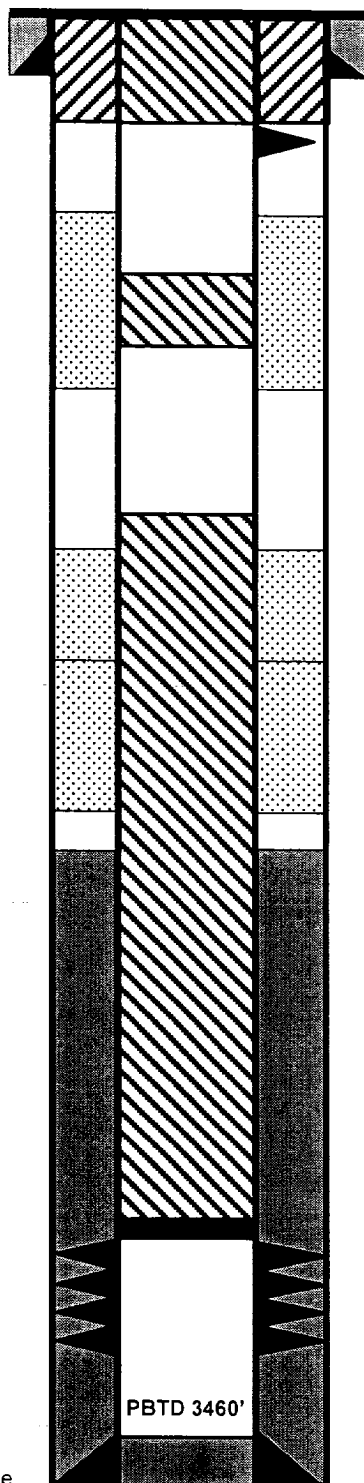
Set CIBP @ 3288'

Pictured Cliffs @ 3335'

Pictured Cliffs Perforations:  
 3338' - 3352'

6-3/4" hole

2-7/8" 6.4#, J-55 Casing set @ 3470'  
 Cement with 280 sxs



TD 3470'