

**NEW MEXICO OIL CONSERVATION COMMISSION  
WELL LOCATION AND ACERAGE DEDICATION PLAT**

All distances must be from the outer boundaries of the Section

Operator <b>SUPRON ENERGY CORPORATION</b>		Lease <b>SEYMOUR</b>		Well No <b>10</b>
Unit Letter: <b>D</b>	Section <b>24</b>	Township <b>31 NORTH</b>	Range <b>9 WEST</b>	County <b>SAN JUAN</b>
Actual Footage Location of Well: <b>870</b> feet from the <b>NORTH</b> line and <b>1150</b> feet from the <b>WEST</b> line ✓				
Ground Level Elev. <b>6436</b>	Producing Formation <b>BASIN</b>	Pool <b>DAKOTA</b> ✓	Dedicated Acreage: ✓ <b>314.74</b> Acres	

1. Outline the acreage dedicated to the subject well by colored pencil or hachure marks on the plat below.
  2. If more than one lease is dedicated to the well, outline each and identify the ownership thereof (both as to working interest and royalty),
  3. If more than one lease of different ownership is dedicated to the well, have the interests of all owners been consolidated by communitization, unitization, force-pooling, etc?  
 Yes    No   If answer is "yes," type of consolidation .....
- If answer is "no," list the owners and tract descriptions which have actually consolidated. (Use reverse side of this Form if necessary.) .....
- No allowable will be assigned to the well until all interests have been consolidated (by communitization, unitization, forced-pooling, or otherwise) or until a non standard unit, eliminating such interests, has been approved by the Commission.

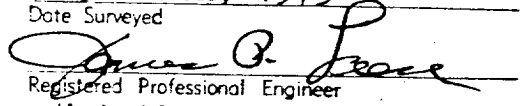
**CERTIFICATION**

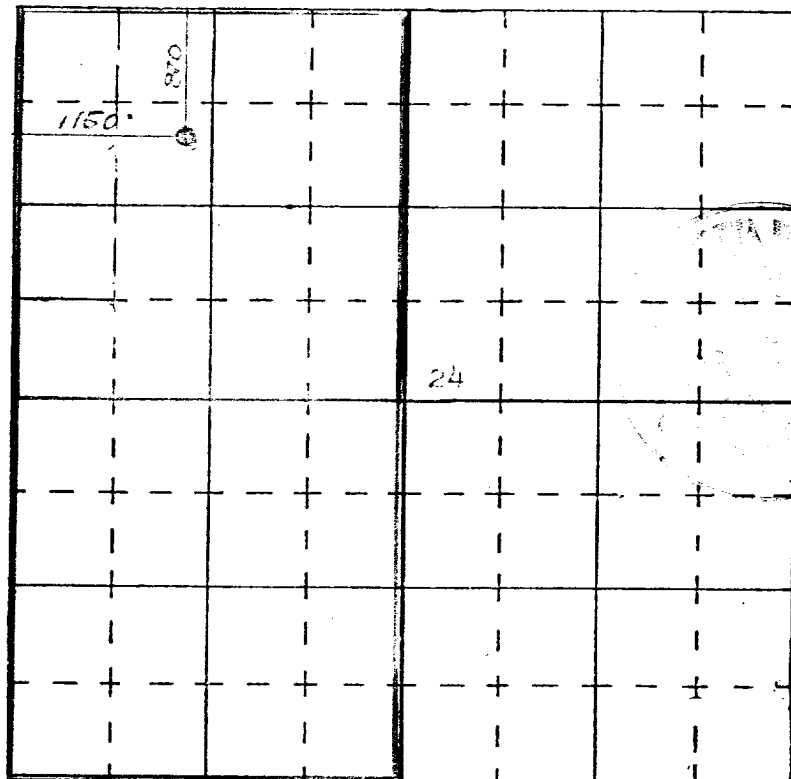
I hereby certify that the information contained herein is true and complete to the best of my knowledge and belief.

**Original Signed By**

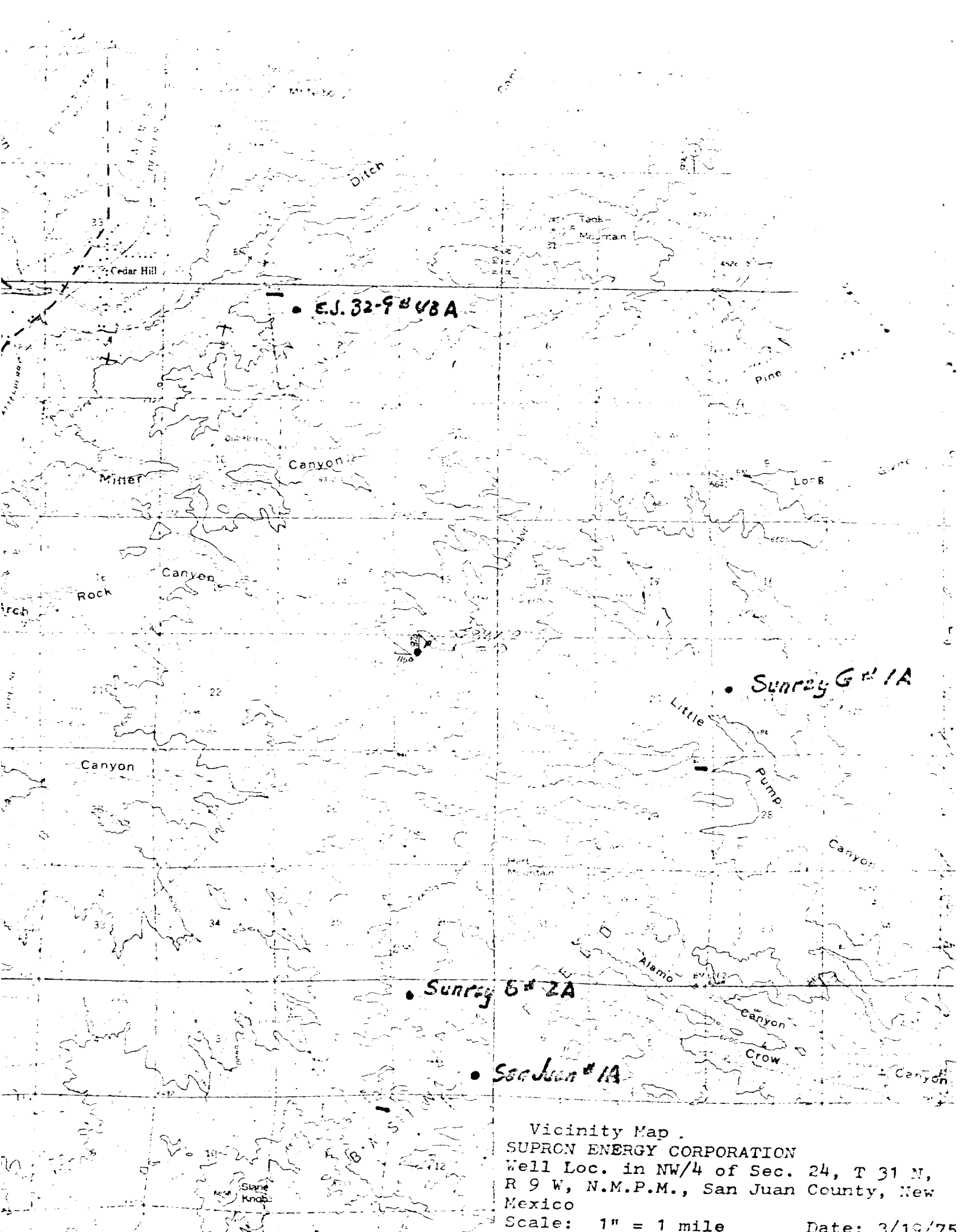
Name **Rudy D. Motto**  
 Position **Rudy D. Motto**  
**Area Superintendent**  
 Company  
**Supron Energy Corporation**  
 Date **April 3, 1978** NO. **1463**

I hereby certify that the well location shown on this plat was plotted from field notes of actual surveys made by me or under my supervision, and that the same is true and correct to the best of my knowledge and belief.

Date Surveyed **19 March, 1975**  
  
 Registered Professional Engineer  
 and/or Land Surveyor  
**James P. Lease**



SCALE—4 INCHES EQUALS 1 MILE



• E.J. 32-9# VBA

• Surrey G# 1A

• Surrey B# 2A

• San Juan # 1A

Vicinity Map  
SUPRON ENERGY CORPORATION  
Well Loc. in NW/4 of Sec. 24, T 31 N,  
R 9 W, N.M.P.M., San Juan County, New  
Mexico

Scale: 1" = 1 mile

Date: 3/19/75

SUPRON ENERGY CORPORATION  
POST OFFICE BOX 808  
FARMINGTON, NEW MEXICO 87401

April 7, 1978

United States Geological Survey  
P.O. Box 959  
Farmington, New Mexico 87401

Dear Sir:

Supron Energy Corporation proposes to drill its Seymour No. 10 well, Basin Dakota formation located 870 feet from the North line and 1150 feet from the West line of Section 24, Township 31 North, Range 9 West, N.M.P.M., San Juan County, New Mexico.

Attached are maps showing the following data:

1. Existing roads. (Plat has been previously filed)
2. Access road
3. Location of existing wells has been previously filed.
4. Lateral roads to well locations has been previously filed.
5. A plat of the tank battery and flow lines is enclosed.
6. Drilling and completion water will be obtained from Pump Canyon Wash and the San Juan River.
7. Waste will be disposed of by being placed in the reserve pit and buried. Some will be burned in burn pit which will be covered after the well has been completed.
8. There will be no camp at or near the proposed well site.
9. There will be no airstrip.
10. A map is attached showing the location of the rig, mud tanks, reserve pit, burn pit, pipe racks, etc. The access road and location will be compacted.
11. After the well is completed the location will be cleaned and bladed. The reserve pit will be fenced until it has dried and then it will be filled and restroed to its natural state. The access road will be left as is for well maintenance.
12. The location is on a mesa above Pump Canyon. The well is on an existing location with no vegetation.

Yours very truly,

SUPRON ENERGY CORPORATION



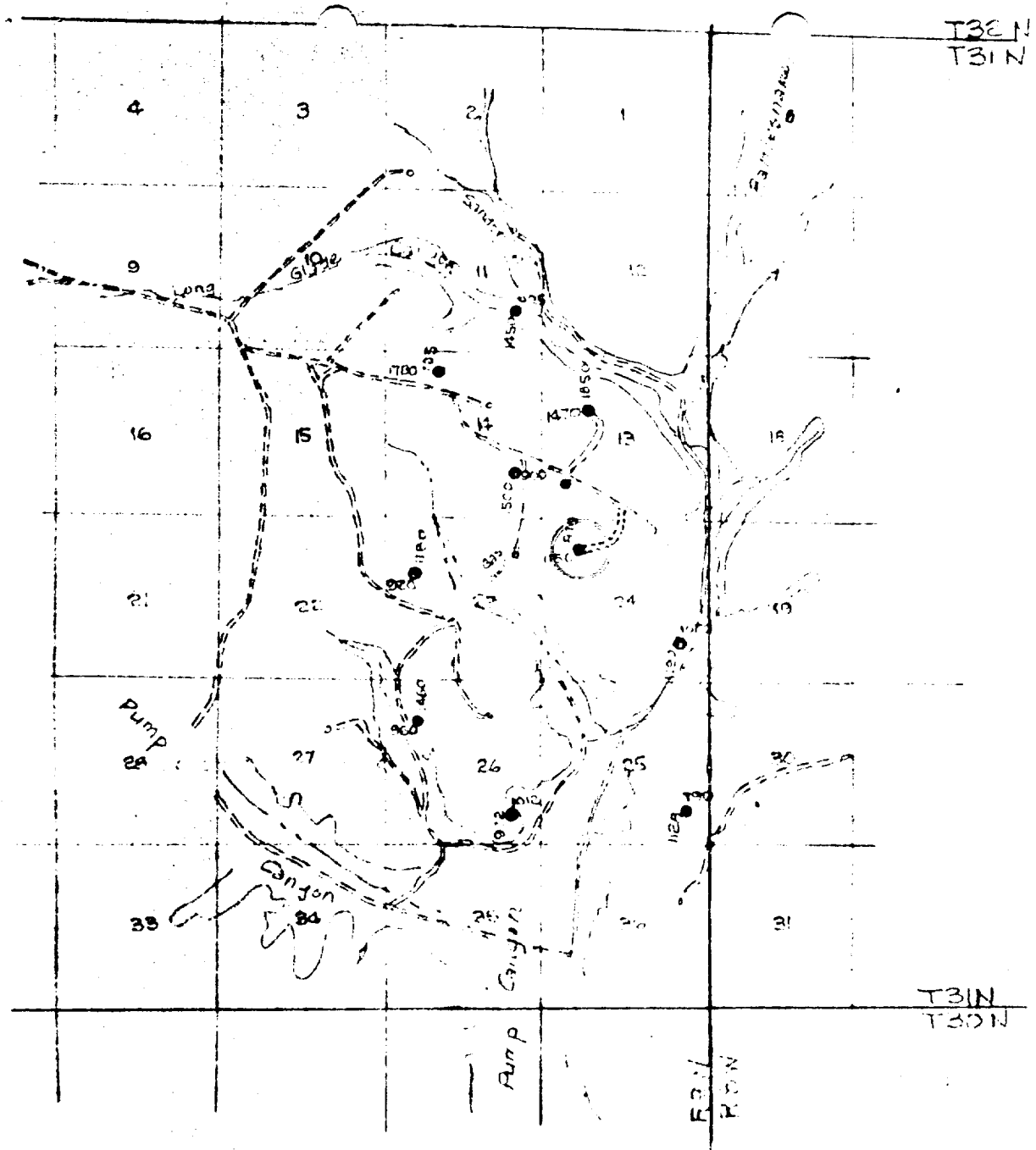
Rudy D. Motto  
Area Superintendent

RDM:bjs



RECEIVED  
APR 7 1978

U.S. Geological Survey  
Farmington, N.M.



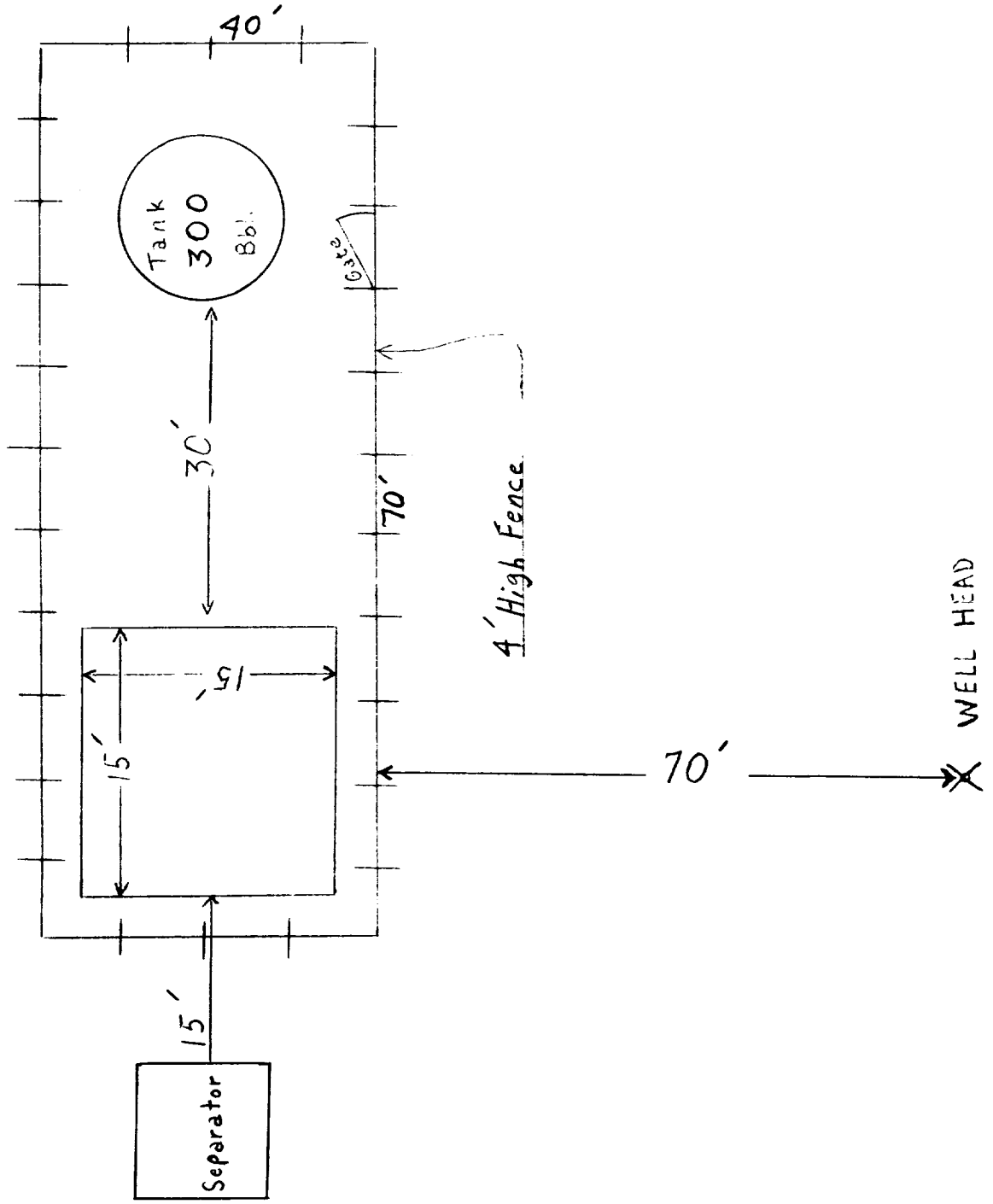
Vicinity Map For: SEYMOUR NO. 10

SUPRON ENERGY CORPORATION

11 wells located in T31N R20W  
 San Juan Co., New Mex.; Sec. 11 -  
 NE/SE; Sec. 13 - SE/NW; Sec. 14 - NE/SE &  
 NE/NW; Sec. 23 - NW/NW; Sec. 24 - SE/SE &  
 NW/NW; Sec. 25 - SE/SE; Sec. 26 - SW/NW &  
 SE/SE; Scale: 1" = 1 mile



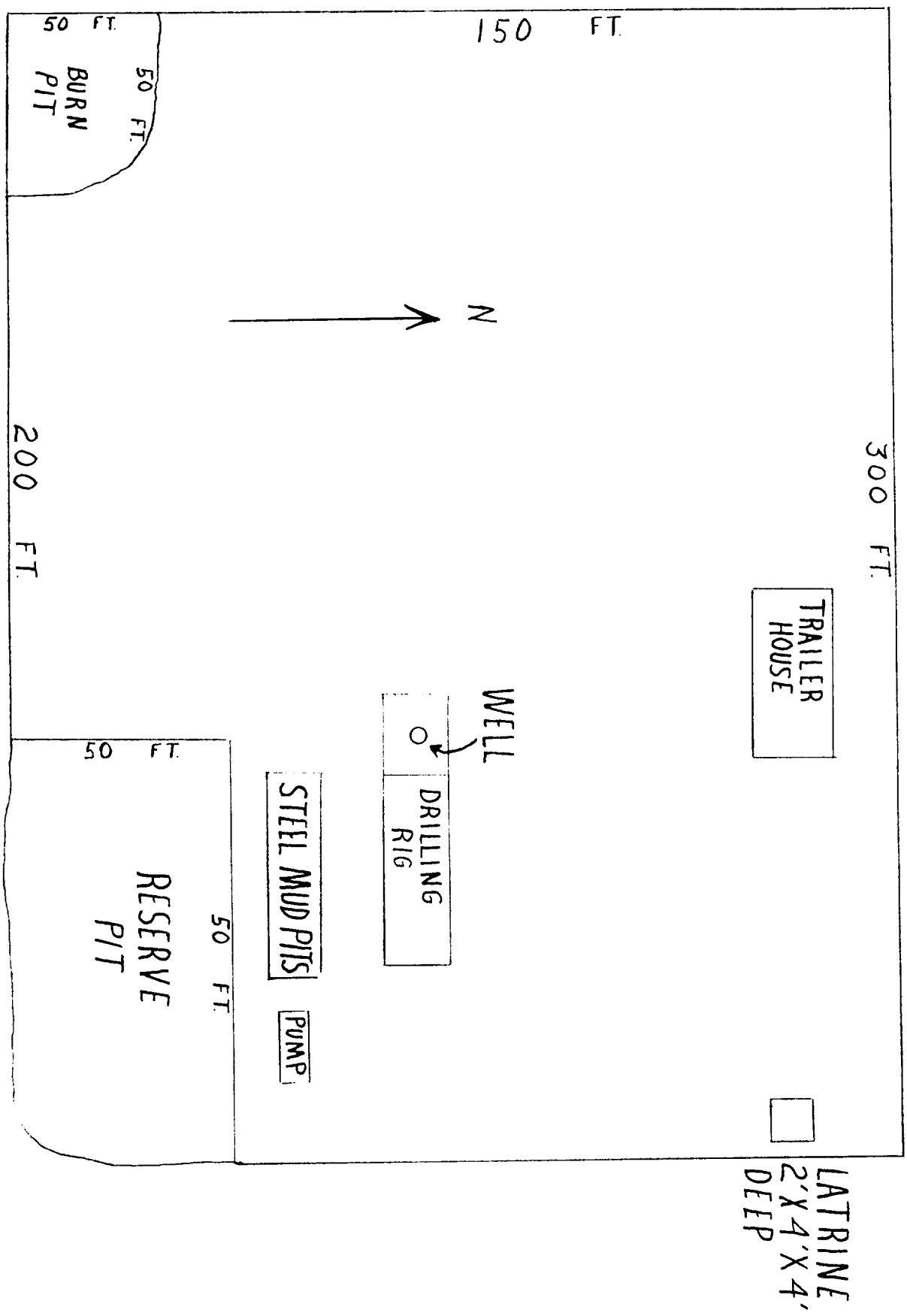
San Juan Engineering Co.  
 Farmington, New Mexico



SUPRON ENERGY CORPORATION

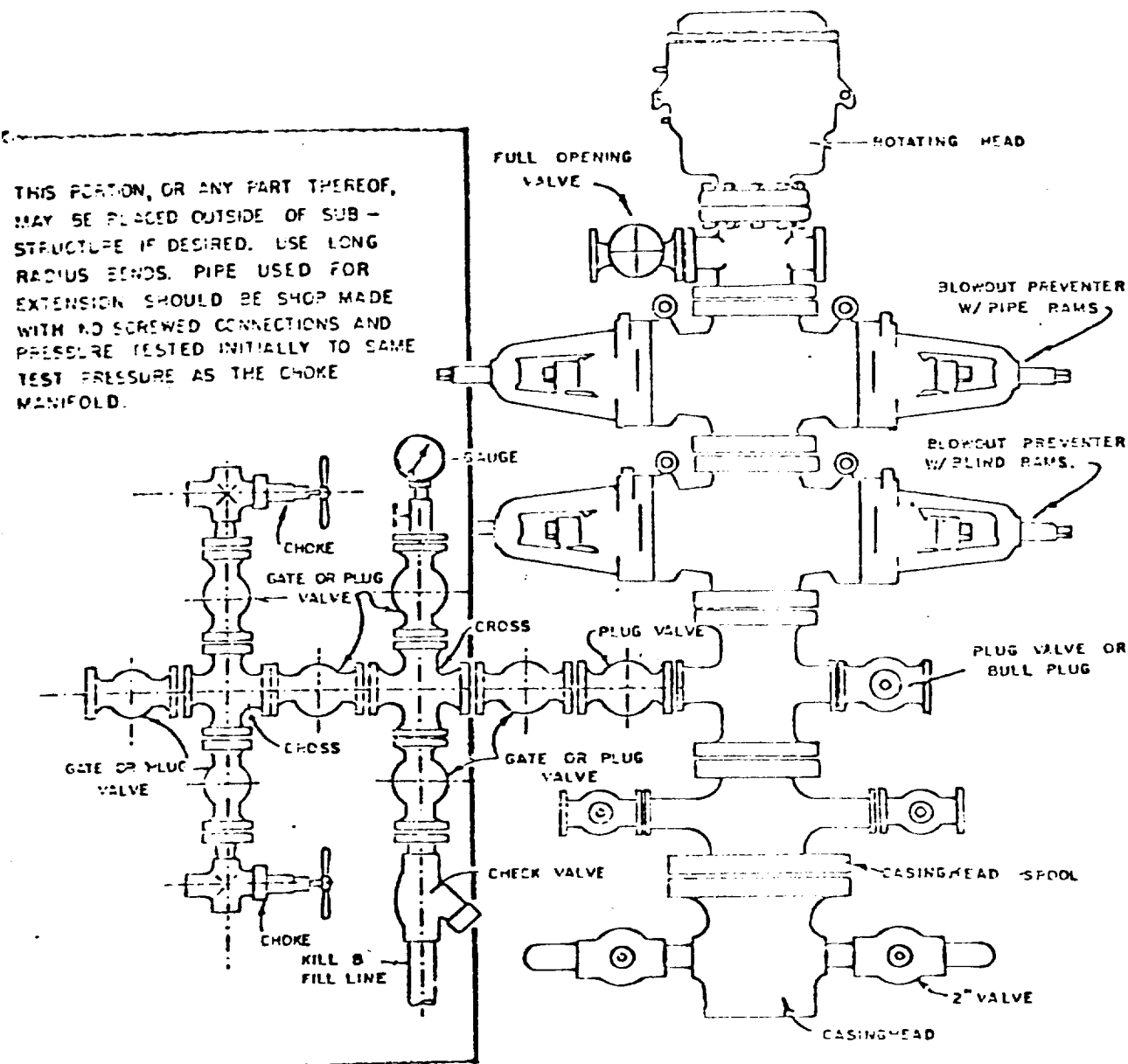
SEYMOUR NO. 10

870/N Line and 1150/W Line of Sec. 24, Twp. 31N, Rge. 9W,  
San Juan County, New Mexico



Blowout Preventer will be tested daily and prior to drilling out with the results to be logged on the drillers report.

The B.O.P. and all valve and fittings are rated at 3000 psi working pressure, and hydraulically operated

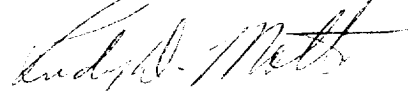


BLOWOUT PREVENTER HOOKUP

**SUPRON ENERGY CORPORATION**  
POST OFFICE BOX 808  
FARMINGTON, NEW MEXICO 87401

I hereby certify that I, or persons under my direct supervision, have inspected the proposed drillsite and access route; that I am familiar with the conditions which presently exist; that the statements made in this plan are, to the best of my knowledge, true and correct; and, that the work associated with the operations proposed herein will be performed by SUPRON ENERGY CORPORATION and its contractors subcontractors in conformity with this plan and the terms and conditions under which it is approved.

SUPRON ENERGY CORPORATION



Rudy D. Motto  
Area Superintendent  
Phone: 325-3587



SEYMOUR NO. 10

SUPPLEMENT TO FORM 9-331C

1. The geologic name of the surface formation is, "Wasatch".
2. The estimated tops of important Geologic markers are:
  - A. Base of Ojo Alamo - - - - - 2550 Ft.
  - B. Fruitland - - - - - 2930 Ft.
  - C. Pictured Cliffs - - - - - 3335 Ft.
  - D. Cliff House - - - - - 5165 Ft.
  - E. Point Lookout - - - - - 5555 Ft.
  - F. Mancos Shale - - - - - 5705 Ft.
  - G. Base of Greenhorn - - - - - 7700 Ft.
  - H. Dakota - - - - - 7755 Ft.
3. The estimated depths at which anticipated water, oil, gas or other mineral bearing formations are expected to be encountered are:
  - A. Ojo Alamo - - - - - Water - - - 2550 Ft.
  - B. Fruitland - - - - - Water - - - 2930 Ft.
  - C. Pictured Cliffs - - Water - - - 3335 Ft.
  - D. Cliff House - - - - Gas - - - 5165 Ft.
  - E. Point Lookout - - - Gas - - - 5555 Ft.
  - F. Mancos Shale - - - - - 5705 Ft.
  - G. Base of Greenhorn - - - - - 7700 Ft.
  - H. Dakota - - - - - Gas - - - 7755 Ft.
4. The casing program is shown on Form 9-331C and all casing is new.
5. The lessee's pressure control equipment schematics are attached along with minimum specifications, testing procedures and frequencies.
6. The type, estimated volumes and characteristics of the circulating mediums are as follows:
  - A. 0 to 3490 ft. - Clean out with water.
  - B. 0 to 7875 ft. (TD) Natural gas will be used as the circulating medium. It is expected to require 8000 MCF.
7. The auxiliary equipment to be used will be floats at the bit and a sub on the floor with a full opening valve (in the open position) to be stabbed into the drill pipe when the Kelly is not in the string.
8. This well is in an area which is developed; therefore, we will not have a testing and coring program. The logging program is as follows:
  - E. S. Induction
  - Gamma Ray Density
  - Gamma Ray Correlation
  - Cement Bond or Temperature
9. There are no anticipated abnormal pressures, temperatures or hydrogen sulfide gas problems expected in this developed area.
10. The expected starting date for this well is May 15, 1978.