

UNITED STATES
DEPARTMENT OF THE INTERIOR
GEOLOGICAL SURVEY

30-045-21803

APPLICATION FOR PERMIT TO DRILL, DEEPEN, OR PLUG BACK

1a. TYPE OF WORK

DRILL ☒DEEPEN ☐PLUG BACK ☐

b. TYPE OF WELL

OIL
WELL ☐GAS
WELL ☒

OTHER

SINGLE
ZONE ☒MULTIPLE
ZONE ☐

2. NAME OF OPERATOR

Aztec Oil & Gas Company

3. ADDRESS OF OPERATOR

P. O. Drawer 570, Farmington, New Mexico

4. LOCATION OF WELL (Report location clearly and in accordance with any State requirements)

At surface

1835' FNL & 1790' FEL

At proposed prod. zone

14. DISTANCE IN MILES AND DIRECTION FROM NEAREST TOWN OR POST OFFICE*

15. DISTANCE FROM PROPOSED*

LOCATION TO NEAREST
PROPERTY OR LEASE LINE, FT.
(Also to nearest drlg. unit line, if any)18. DISTANCE FROM PROPOSED LOCATION*
TO NEAREST WELL, DRILLING COMPLETED,
OR APPLIED FOR, ON THIS LEASE, FT.

21. ELEVATIONS (Show whether DP, RT, GR, etc.)

6018' GR

23.

PROPOSED CASING AND CEMENTING PROGRAM

SIZE OF HOLE	SIZE OF CASING	WEIGHT PER FOOT	SETTING DEPTH	QUANTITY OF CEMENT
15"	9-5/8"	32.30	300	300 sxs.
8-5/8"	7"	23	4600	200 sxs.
6-3/4"	4-1/2"	10.50	4500 - 5000	150 sxs.
	1-1/2"	2.90	4950	

PROPOSE TO:

Drill 15" hole.
Set 300' of 9-5/8" surface casing. Cement with 300 sxs.
Drill 8-3/4" hole to approximately 4600'.
Run 7" casing. Cement with 200 sxs.
Gas drill 6-3/4" hole to approximately 5000'.
Run 4-1/2" liner from 4500 to 5000'. Cement with 150 sxs.
Perforate Mesaverde formation.
Sand/water frac with 40,000 gallons water and 40,000# sand.
Run 1-1/2" tubing.
Install well head.

IN ABOVE SPACE DESCRIBE PROPOSED PROGRAM: If proposal is to deepen or plug back, give data on present productive zone and proposed new productive zone. If proposal is to drill or deepen directionally, give pertinent data on subsurface locations and measured and true vertical depths. Give blowout preventer program, if any.

24.

SIGNED



TITLE

District Superintendent

DATE May 1, 1975

(This space for Federal or State office use)

PERMIT NO.

APPROVAL DATE

APPROVED BY



TITLE

CONDITIONS OF APPROVAL, IF ANY:

MAY 1 1975

U. S. GEOLOGICAL SURVEY

*See Instructions On Reverse Side

**NEW MEXICO OIL CONSERVATION COMMISSION
WELL LOCATION AND ACREAGE DEDICATION PLAT**

Form C-102
Supersedes C-128
Effective 1-1-65

All distances must be from the outer boundaries of the Section.

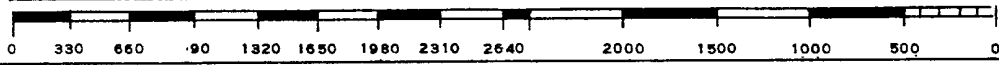
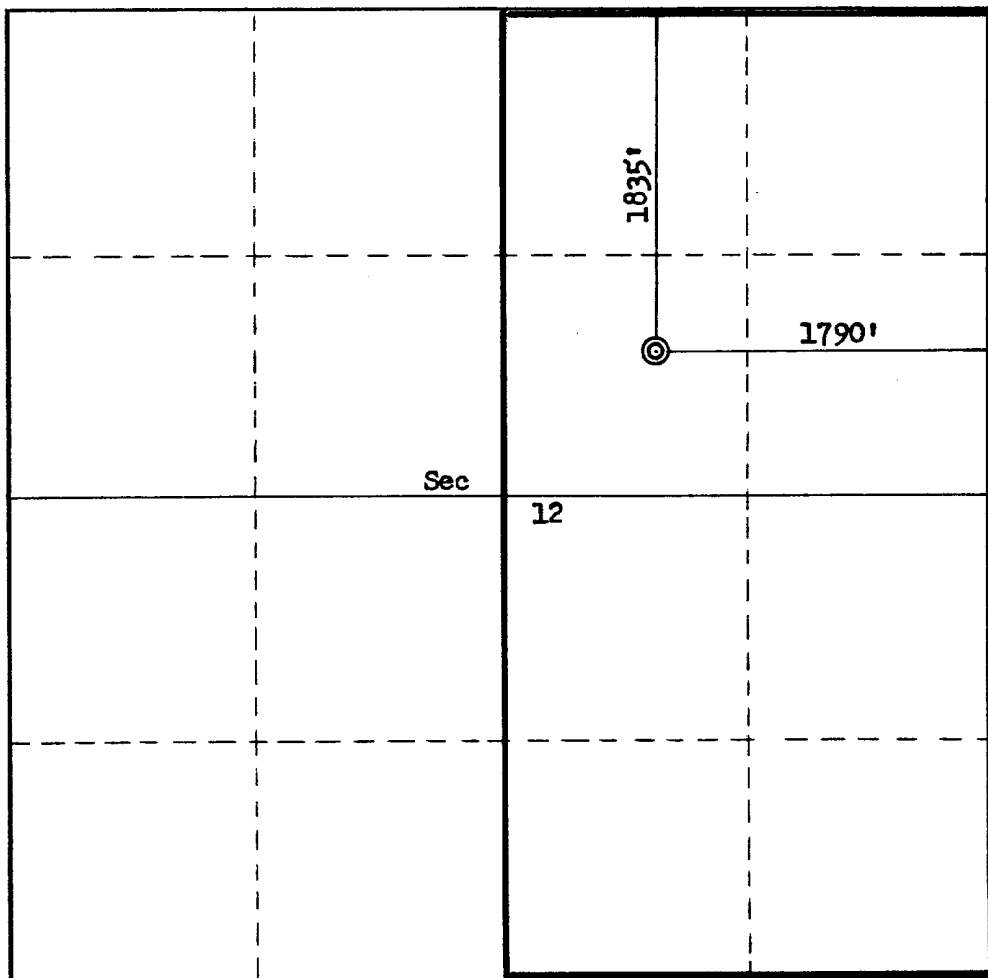
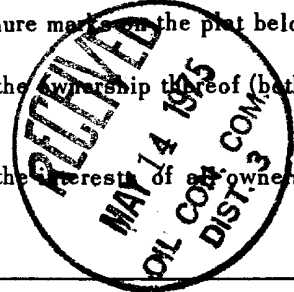
Operator Aztec Oil & Gas Company			Lease Nye		Well No. 16
Unit Letter G	Section 12	Township 30N	Range 11W	County San Juan	
Actual Footage Location of Well: 1835 feet from the North line and 1790 feet from the East line					
Ground Level Elev. 6018	Producing Formation Mesa Verde	Pool Blanco		Dedicated Acreage: 327.89320 Acres	

1. Outline the acreage dedicated to the subject well by colored pencil or hachure marks on the plat below.
2. If more than one lease is dedicated to the well, outline each and identify the ownership thereof (both as to working interest and royalty).
3. If more than one lease of different ownership is dedicated to the well, have the interests of all owners been consolidated by communitization, unitization, force-pooling, etc?

☐ Yes ☐ No If answer is "yes," type of consolidation _____

If answer is "no," list the owners and tract descriptions which have actually been consolidated. (Use reverse side of this form if necessary.) _____

No allowable will be assigned to the well until all interests have been consolidated (by communitization, unitization, forced-pooling, or otherwise) or until a non-standard unit, eliminating such interests, has been approved by the Commission.



CERTIFICATION

I hereby certify that the information contained herein is true and complete to the best of my knowledge and belief.

Name *Joe C. Salmon*
 Position District Superintendent
 Company Aztec Oil & Gas Company
 Date May 1, 1975

I hereby certify that the well location shown on this plat was plotted from field notes of actual surveys made by me or under my supervision, and that the same is true and correct to the best of my knowledge and belief.

Date Surveyed April 23, 1975
 Registered Professional Engineer and/or Land Surveyor
Fred B. Kerr
 Certificate No. 3950

AZTEC OIL & GAS COMPANY

P. O. DRAWER 570
FARMINGTON, NEW MEXICO 87401

May 1, 1975

United States Geological Survey
P. O. Box 959
Farmington, New Mexico

Attention: Mr. P. T. McGrath

Dear Sir:

Enclosed please find map showing existing roads and planned access roads to Aztec Oil & Gas Company's Nye #16 well. The locations of tank batteries and flow lines will be on location with well.

There will be no camps or air strips.

Also enclosed is location layout showing approximate location of rig, pits and pipe rights.

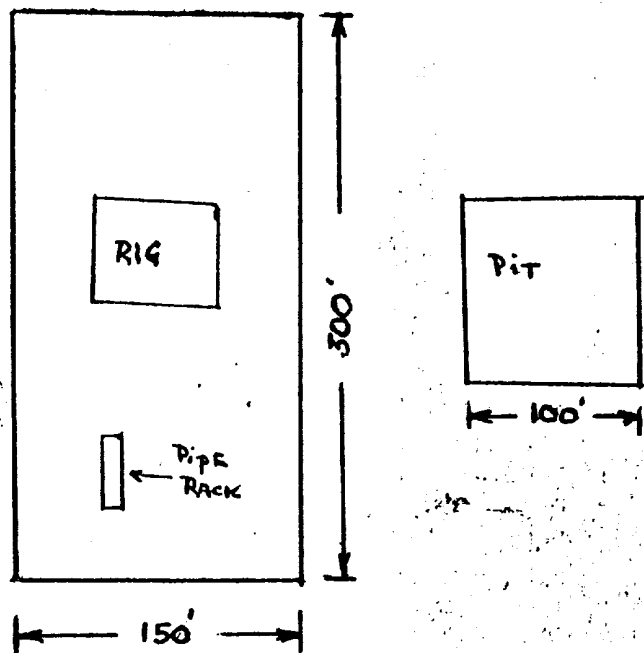
Water supply will be San Juan River.

In the event of a dry hole, location will be graded and reseeded according to Bureau of Land Management standards.

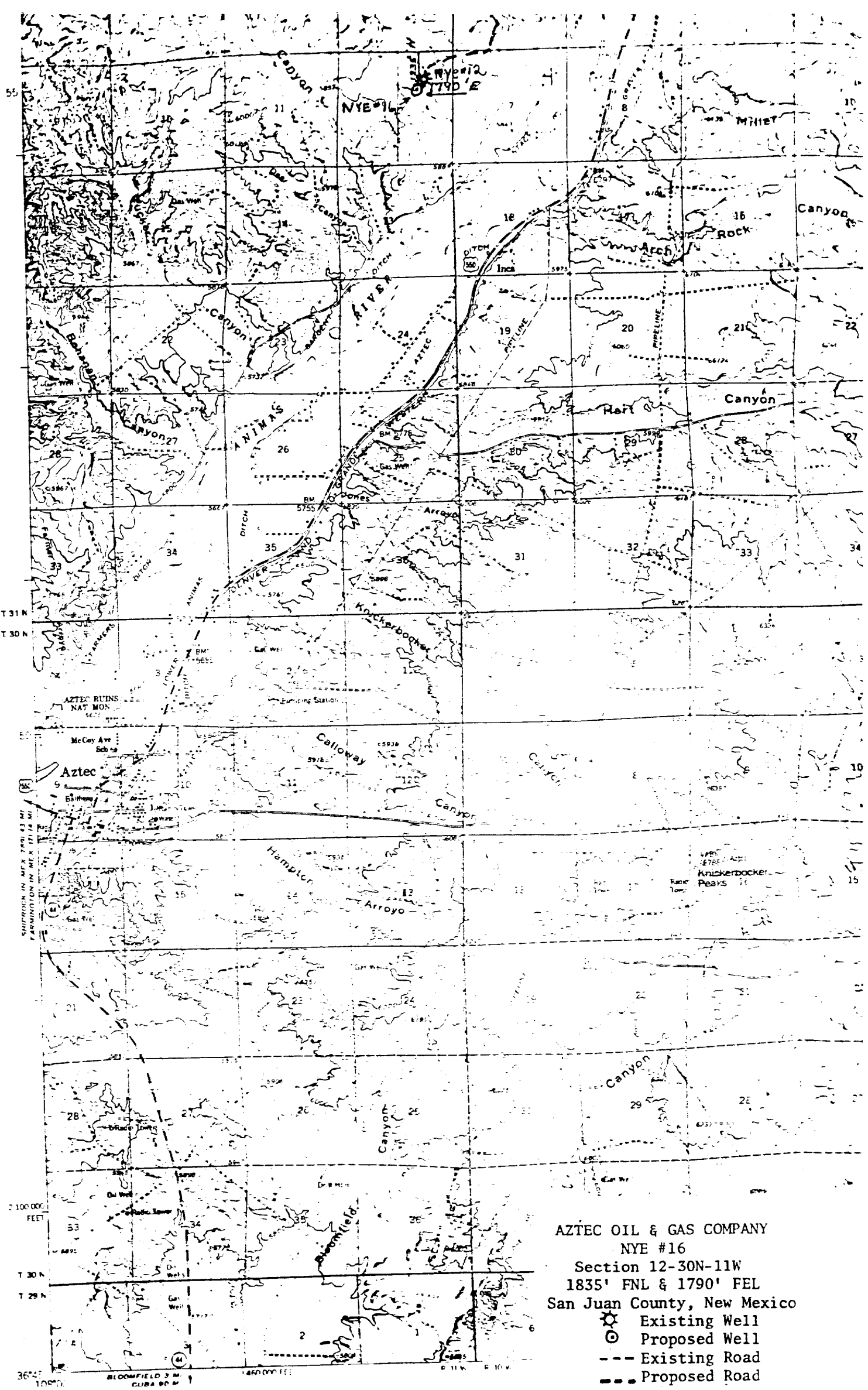


Joe C. Salmon
District Superintendent

JCS/dg



LOCATION LAYOUT



AZTEC OIL & GAS COMPANY

P. O. DRAWER 570

FARMINGTON, NEW MEXICO 87401

May 1, 1975

United States Geological Survey
P. O. Box 959
Farmington, New Mexico

Attention: Mr. P. T. McGrath

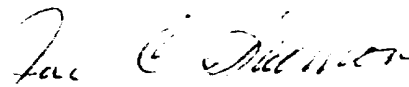
RE: Blowout Preventer Plan

Dear Sir:

All drilling and completion wells will be equipped with 8" Shaffer LWP double hydraulic blowout preventers and a 2000 "C" Payne Hydraulic closing unit with steel line.

The preventer is 3000# working pressure and 6000# test.

All crews will be thoroughly trained in the operation of this preventer. The preventer will be tested at the beginning of every tower change to insure proper operation.



Joe C. Salmon
District Superintendent

JCS/dg