

UNITED STATES  
DEPARTMENT OF THE INTERIOR  
GEOLOGICAL SURVEY

30.045-21861

## APPLICATION FOR PERMIT TO DRILL, DEEPEN, OR PLUG BACK

## TYPE OF WORK

DRILL ☒DEEPEN ☐PLUG BACK ☐

## b. TYPE OF WELL

OIL  
WELL ☐GAS  
WELL ☒

OTHER

SINGLE  
ZONE ☐MULTIPLE  
ZONE ☐

## 2. NAME OF OPERATOR

Tenneco Oil Company

## 3. ADDRESS OF OPERATOR

Suite 1200 Lincoln Tower Bldg., Denver, Colorado 80203

## 4. LOCATION OF WELL (Report location clearly and in accordance with any State requirements.)\*

At surface

1100 FSL &amp; 800 FEL

At proposed prod. zone

## 14. DISTANCE IN MILES AND DIRECTION FROM NEAREST TOWN OR POST OFFICE\*

## 15. DISTANCE FROM PROPOSED\*

LOCATION TO NEAREST  
PROPERTY OR LEASE LINE, FT.  
(Also to nearest drlg. unit line, if any)

## 18. DISTANCE FROM PROPOSED LOCATION\*

TO NEAREST WELL, DRILLING, COMPLETED,  
OR APPLIED FOR, ON THIS LEASE, FT.

## 16. NO. OF ACRES IN LEASE

481.38

## 19. PROPOSED DEPTH

+ 5340'

17. NO. OF ACRES ASSIGNED  
TO THIS WELL

321.38

## 20. ROTARY OR CABLE TOOLS

Rotary

## 21. ELEVATIONS (Show whether DF, RT, GR, etc.)

5978 GL

## 22. APPROX. DATE WORK WILL START\*

## 23.

## PROPOSED CASING AND CEMENTING PROGRAM

SIZE OF HOLE	SIZE OF CASING	WEIGHT PER FOOT	SETTING DEPTH	QUANTITY OF CEMENT
12 1/4"	9 5/8"	36#	+ 200'	Sufficient to circulate
8 3/4"	7 "	20#	+3200'	Cement back to surface casing.
6 1/4"	4 1/2"	10.5#	+5340	Cement back to intermediate casing
	Liner			

The proposed drilling program for this well is as follows. drill 12 1/4" hole to + 200' and set 9 5/8" casing, circulate cement to surface.

Drill 8 3/4" hole to + 3200' and run 7" casing and cement back to surface casing.

Drill on to TD using gas as circulating fluid. Log the hole and hange 4 1/2" Liner to TD. Load hole with mud and cement liner back to 7". Set liner hanger and POH with drill pipe. This well will be completed through casing perforations in the Mesa Verde formation and stimulated as necessary to establish commercial gas production.

IN ABOVE SPACE DESCRIBE PROPOSED PROGRAM: If proposal is to deepen or plug back, give data on present productive zone and proposed new productive zone. If proposal is to drill or deepen directionally, give pertinent data on subsurface locations and measured and true vertical depths. Give blowout preventer program, if any.

21.

SIGNED

TITLE

Production Clerk

DATE

(This space for Federal or State office use)

PERMIT NO.

APPROVAL DATE

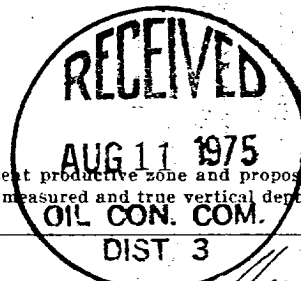
APPROVED BY

TITLE

DATE

CONDITIONS OF APPROVAL, IF ANY:

\*See Instructions On Reverse Side



NEW MEXICO OIL CONSERVATION COMMISSION  
WELL LOCATION AND ACREAGE DEDICATION PLAT

Form C-102  
Supersedes C-123  
Effective 1-1-65

All distances must be from the outer boundaries of the Section.

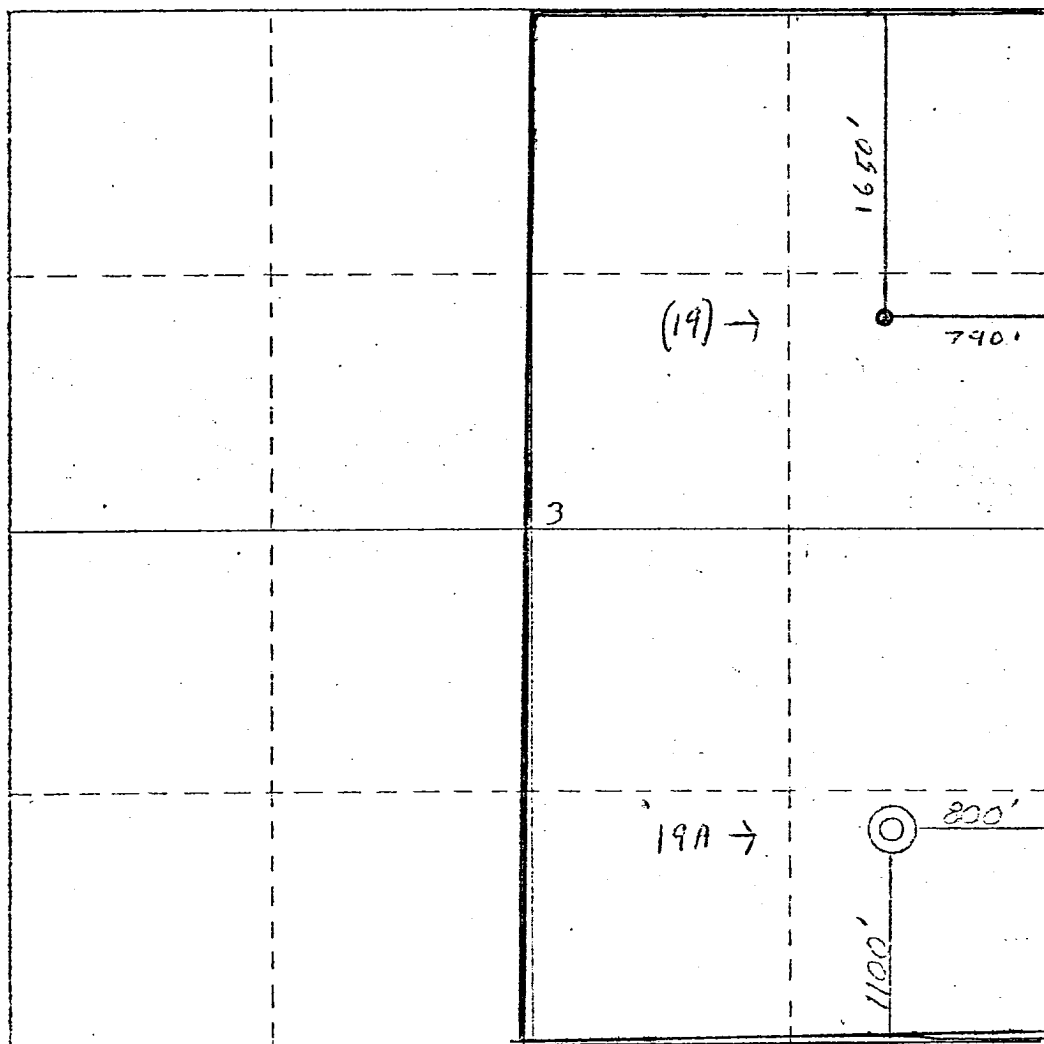
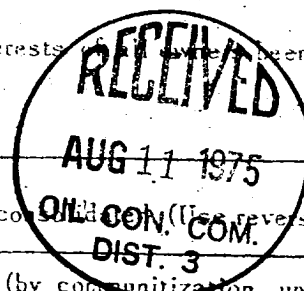
Operator <b>TENNECO OIL COMPANY</b>		Lease <b>FLORANCE</b>		Well No. <b>19 A</b>
Unit Letter <b>P</b>	Section <b>3</b>	Township <b>30 NORTH</b>	Range <b>9 WEST</b>	County <b>SAN JUAN</b>
Actual Footage Location of Well: <b>1100</b> feet from the <b>SOUTH</b> line and <b>800</b> feet from the <b>EAST</b> line				
Ground Level Elev. <b>5978</b>	Producing Formation <b>Blanco Mesa Verde</b>	Pool <b>Blanco Mesa Verde</b>	Dedicated Acreage <b>321.38</b>	E/2 Acres

- Outline the acreage dedicated to the subject well by colored pencil or hatchure marks on the plat below.
- If more than one lease is dedicated to the well, outline each and identify the ownership thereof (both as to working interest and royalty).
- If more than one lease of different ownership is dedicated to the well, have the interests been consolidated by communitization, unitization, force-pooling, etc?

☐ Yes ☐ No If answer is "yes," type of consolidation \_\_\_\_\_

If answer is "no," list the owners and tract descriptions which have actually been consolidated (Use reverse side of this form if necessary.) \_\_\_\_\_

No allowable will be assigned to the well until all interests have been consolidated (by communitization, unitization, forced-pooling, or otherwise) or until a non-standard unit, eliminating such interests, has been approved by the Commission.



CERTIFICATION

I hereby certify that the information contained herein is true and complete to the best of my knowledge and belief.

Name *Ted F. Drake*

Position  
Production Clerk

Company  
Tenneco Oil Clerk

Date *August 11 1975*

I hereby certify that the well location shown on this plat was located from field notes of actual surveys made by me or under my supervision, and that the same is true and correct to the best of my knowledge and belief.

Date Surveyed  
23 July 1975

Registered Professional Engineer or Land Surveyor  
*James P. Lease*  
James P. Lease

Certificate No.

1463