

UNITED STATES  
DEPARTMENT OF THE INTERIOR

GEOLOGICAL SURVEY

APPLICATION FOR PERMIT TO DRILL, DEEPEN, OR PLUG BACK

1a. TYPE OF WORK

DRILL ☒

DEEPEN ☐

PLUG BACK ☐

b. TYPE OF WELL

OIL WELL ☐

GAS WELL ☒

OTHER

SINGLE ZONE ☐

MULTIPLE ZONE ☐

2. NAME OF OPERATOR

Tenneco Oil Company

3. ADDRESS OF OPERATOR

1860 Lincoln St., Suite 1200, Denver, Colorado 80203

4. LOCATION OF WELL (Report location clearly and in accordance with any State requirements.)\*

At surface

1460 FSL and 1100' FEL, Unit I

At proposed prod. zone

14. DISTANCE IN MILES AND DIRECTION FROM NEAREST TOWN OR POST OFFICE\*

See Point 1 of Surface Use Plan

10. DISTANCE FROM PROPOSED\*

LOCATION TO NEAREST

PROPERTY OR LEASE LINE, FT.

(Also to nearest drlg. unit line, if any)

16. NO. OF ACRES IN LEASE

320

17. NO. OF ACRES ASSIGNED

TO THIS WELL

E/320

18. DISTANCE FROM PROPOSED LOCATION\*

TO NEAREST WELL, DRILLING, COMPLETED,

OR APPLIED FOR, ON THIS LEASE, FT.

19. PROPOSED DEPTH

+ 5100'

20. ROTARY OR CABLE TOOLS

Rotary

21. ELEVATIONS (Show whether DF, RT, GR, etc.)

5984' GL

22. APPROX. DATE WORK WILL START\*

3-29-77

23.

PROPOSED CASING AND CEMENTING PROGRAM

SIZE OF HOLE	SIZE OF CASING	WEIGHT PER FOOT	SETTING DEPTH	QUANTITY OF CEMENT
12-1/4"	9-5/8"	36#	+ 200'	Suff. to circulate to surface.
8-3/4"	7"	23#	+ 3115'	Suff. to cement back to surface
6-1/8"	4-1/2"	10.5#	- 2815'-5100'	Suff. to cement back to 7" csg.

Plan to drill well as follows:

1. MIRURT, drill 12-1/4" hole to  $\pm$  200'.
2. Set and cement 9-5/8" casing to  $\pm$  200' & cement with suff. cement to circ. to surface
3. Drill out with 8-3/4" bit to  $\pm$  3115'.
4. Run 7" casing and cement back to surface casing.
5. Drill out of 7" using gas as the circulating fluid, do not drill more than 10' below the 7" casing shoe until the hole has dried up completely and is dusting.
6. Drill the hole to T. D., log the hole dry as requested by drillsite geologist.
7. Run 4-1/2" liner to T. D., load hole with mud and cement liner back to top of 4-1/2". Set liner hanger and POH w/drill pipe.
8. This well will be completed through casing perforations and stimulated as necessary to establish commercial production.
9. Clean up area.
10. Approximately 8 days will be required to drill this well.
11. The gas has been dedicated to Southern Union Gathering Co.

IN ABOVE SPACE DESCRIBE PROPOSED PROGRAM: If proposal is to deepen or plug back, give data on present productive zone and proposed new productive zone. If proposal is to drill or deepen directionally, give pertinent data on subsurface locations and measured and true vertical depths. Give blowout preventer program, if any.

24.

SIGNED

*H. E. Brain*

TITLE

Div. Drilling Engineer

DATE 11-9-76

(This space for Federal or State office use)

PERMIT NO.

APPROVAL DATE

APPROVED BY

TITLE

CONDITIONS OF APPROVAL, IF ANY:

*Okaf*

RECEIVED

DATE

NOV 24 1976

U. S. GEOLOGICAL SURVEY

\*See Instructions On Reverse Side

**NEW MEXICO OIL CONSERVATION COMMISSION  
WELL LOCATION AND ACERAGE DEDICATION PLAT**

All distances must be from the outer boundaries of the Section

Operator <b>TENNECO OIL COMPANY</b>			Lease <b>FLORANCE</b>		Well No. <b>10-A</b>
Unit Letter <b>I</b>	Section <b>30</b>	Township <b>30 NORTH</b>	Range <b>9 WEST</b>	County <b>SAN JUAN</b>	
Actual Footage Location of Well: <b>1460</b> feet from the <b>SOUTH</b> line and <b>1100</b> feet from the <b>EAST</b> line					
Ground Level Elev. <b>5984</b>	Producing Formation <b>Blanco Mesa Verde</b>		Pool <b>Blanco Mesa Verde</b>		Dedicated acreage: <b>17/320</b> Acres

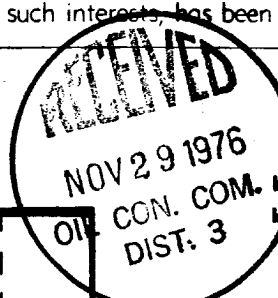
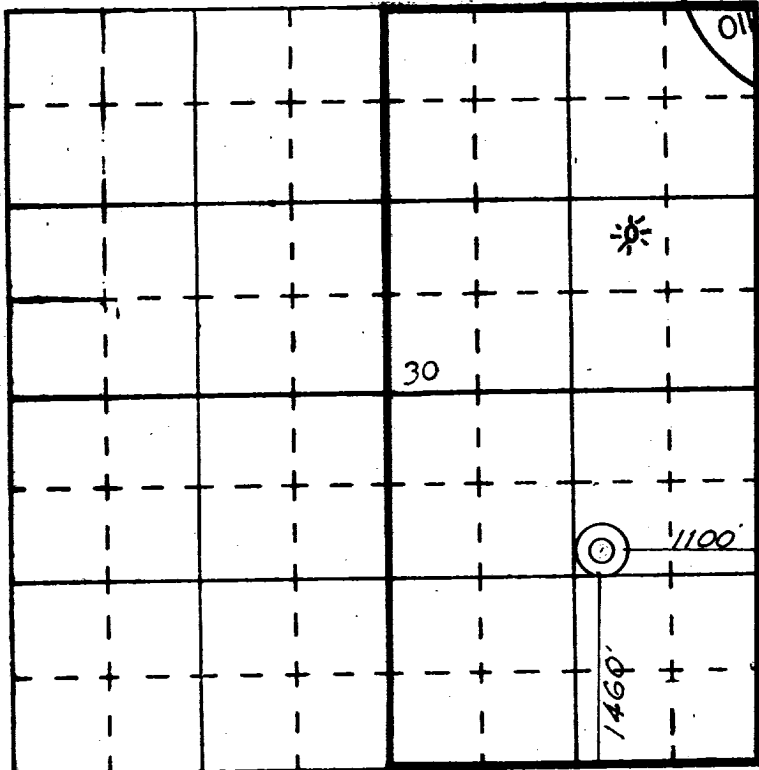
1. Outline the acreage dedicated to the subject well by colored pencil or hachure marks on the plat below.
2. If more than one lease is dedicated to the well, outline each and identify the ownership thereof (both as to working interest and royalty).
3. If more than one lease of different ownership is dedicated to the well, have the interests of all owners been consolidated by communitization, unitization, force-pooling, etc?

**Communitization**

( ☒ ) Yes ( ) No If answer is "yes," type of consolidation \_\_\_\_\_

If answer is "no," list the owners and tract descriptions which have actually consolidated. (Use reverse side of this form if necessary.) \_\_\_\_\_

No allowable will be assigned to the well until all interests have been consolidated (by communitization, unitization, forced-pooling, or otherwise) or until a non standard unit, eliminating such interests, has been approved by the Commission.



**CERTIFICATION**

I hereby certify that the information contained herein is true and complete to the best of my knowledge and belief.

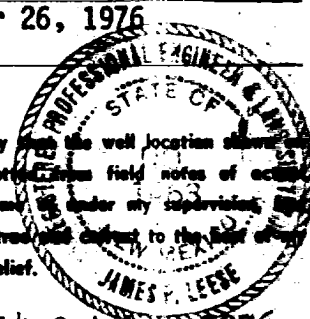
Name *T. F. Drake*

Position Production Clerk

Company Tenneco Oil Company

Date October 26, 1976

I hereby certify that the well location shown on this plat was plotted from field notes of actual surveys made by me or under my supervision, and that the same is true and correct to the best of my knowledge and belief.



14 October 1976

Date Surveyed \_\_\_\_\_

Registered Professional Engineer and/or Land Surveyor James P. Leese

*James P. Leese*  
Certificate No. 1463