

UNITED STATES  
DEPARTMENT OF THE INTERIOR  
GEOLOGICAL SURVEY

30-045-23371

5. LEASE DESIGNATION AND SERIAL NO.

SF-077482

6. IF INDIAN, ALLOTTEE OR TRIBE NAME

7. UNIT AGREEMENT NAME

8. FARM OR LEASE NAME

Holder "A"

9. WELL NO.

#2

10. ~~FEDERAL~~ LAND, OR WILDCAT

Blanco Mesaverde ext

11. SEC., T., R., M., OR BLK.  
AND SURVEY OR AREA

Section 6, T30N, R12W

12. COUNTY OR PARISH

San Juan

13. STATE

New Mexico

## 1a. TYPE OF WORK

DRILL ☒DEEPEN ☐PLUG BACK ☐

## b. TYPE OF WELL

OIL  
WELL ☐GAS  
WELL ☒

OTHER

SINGLE  
ZONE ☒MULTIPLE  
ZONE ☐

## 2. NAME OF OPERATOR

SOUTHLAND ROYALTY COMPANY

## 3. ADDRESS OF OPERATOR

P. O. DRAWER 570, FARMINGTON, NEW MEXICO 87401

## 4. LOCATION OF WELL (Report location clearly and in accordance with any State requirements.\*)

At surface 1450' FNL &amp; 1300' FWL

At proposed prod. zone

## 14. DISTANCE IN MILES AND DIRECTION FROM NEAREST TOWN OR POST OFFICE\*

4 miles Northwest of Flora Vista, New Mexico

## 15. DISTANCE FROM PROPOSED\*

LOCATION TO NEAREST  
PROPERTY OR LEASE LINE, FT.  
(Also to nearest drlg. unit line, if any)

## 16. NO. OF ACRES IN LEASE

17. NO. OF ACRES ASSIGNED  
TO THIS WELL

N/319.91

18. DISTANCE FROM PROPOSED LOCATION\*  
TO NEAREST WELL, DRILLING, COMPLETED,  
OR APPLIED FOR, ON THIS LEASE, FT.

## 19. PROPOSED DEPTH

4797'

## 20. ROTARY OR CABLE TOOLS

Rotary

## 21. ELEVATIONS (Show whether DF, RT, GR, etc.)

5900' GR

## 22. APPROX. DATE WORK WILL START\*

February 15, 1979

## 23.

## PROPOSED CASING AND CEMENTING PROGRAM

SIZE OF HOLE	SIZE OF CASING	WEIGHT PER FOOT	SETTING DEPTH	QUANTITY OF CEMENT
12-1/4"	9-5/8"	36#	200'	125 cu. ft.
8-3/4"	7"	20#	2335'	278 cu. ft.
6-1/4"	4-1/2"	10.5#	2185'-4797'	472 cu. ft.
	2-3/8"	4.7#	4790'	

Surface formation is Nacimiento.

Top of Ojo Alamo sand is at 1100'.

Top of Pictured Cliffs sand is at 2085'.

Fresh water mud will be used to drill from surface to intermediate depth.

An air system will be used to drill from intermediate depth to total depth.

It is anticipated that a GR-Density and a GR-Induction log will be run at total depth.  
No abnormal pressures or poisonous gases are anticipated in this well.It is expected that this well will be drilled before July 15, 1979. This depends on  
time required for approvals, rig availability and the weather.

Gas is dedicated.

IN ABOVE SPACE DESCRIBE PROPOSED PROGRAM: If proposal is to deepen or plug back, give data on present productive zone and proposed new productive zone. If proposal is to drill or deepen directionally, give pertinent data on subsurface locations and measured and true vertical depths. Give blowout preventer program, if any.

## 24.

SIGNED

TITLE District Production Manager DATE January 22, 1979

(This space for Federal or State office use)

PERMIT NO.

APPROVAL DATE

APPROVED BY

TITLE

DATE

CONDITIONS OF APPROVAL, IF ANY:

\*See Instructions On Reverse Side

NEW MEXICO OIL CONSERVATION COMMISSION  
WELL LOCATION AND ACREAGE DEDICATION PLAT

Form C-102  
Supersedes C-128  
Effective 1-1-65

All distances must be from the outer boundaries of the Section.

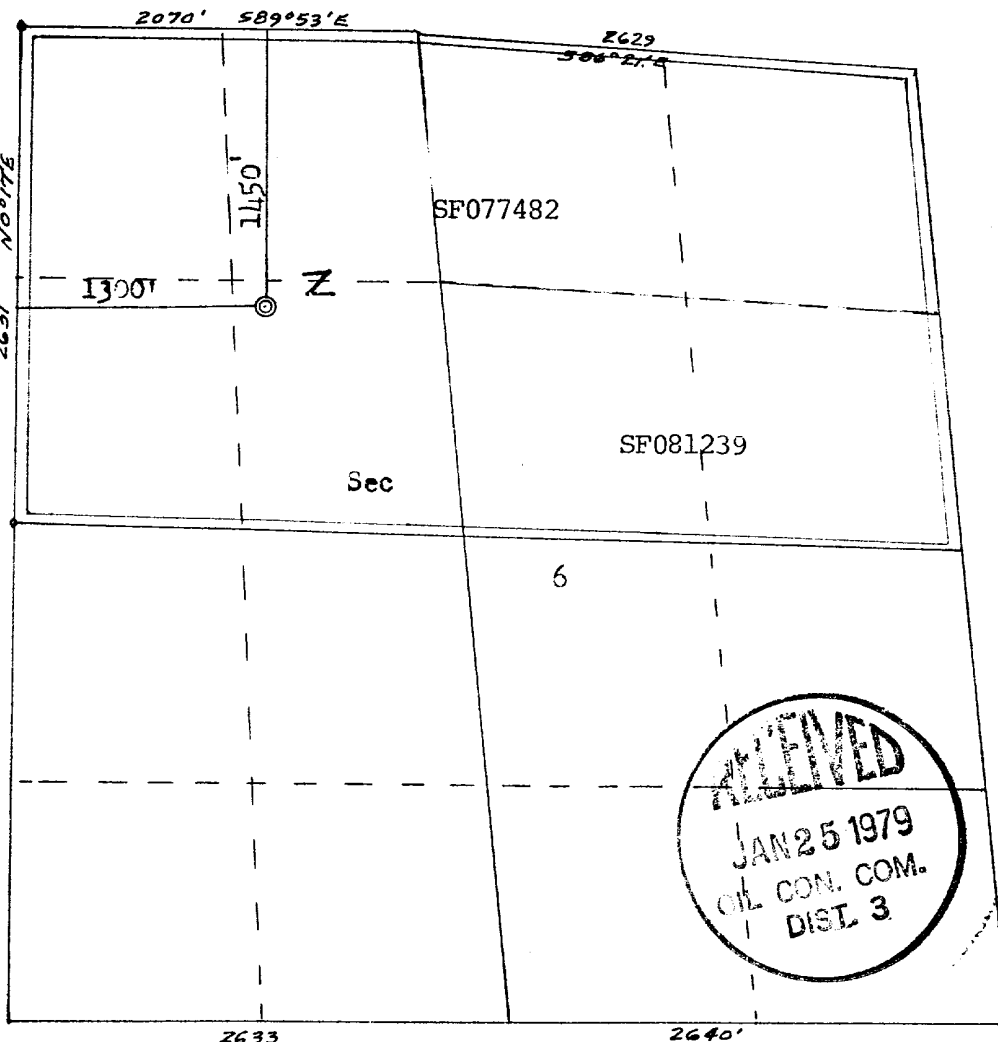
Operator <b>SOUTHLAND ROYALTY COMPANY</b>			Lease <b>HOLDER "A"</b>		Well No. <b>2</b>
Unit Letter <b>F</b>	Section <b>6</b>	Township <b>30N</b>	Range <b>12W</b>	County <b>San Juan</b>	
Actual Footage Location of Well: <b>1450</b> feet from the <b>North</b> line and <b>1300</b> feet from the <b>West</b> line					
Ground Level Elev: <b>5900</b>	Producing Formation <b>MESA VERDE</b>		Pool <b>Blanco ext</b>	Dedicated Acreage: <b>319.91</b> Acres	

1. Outline the acreage dedicated to the subject well by colored pencil or hachure marks on the plat below.
2. If more than one lease is dedicated to the well, outline each and identify the ownership thereof (both as to working interest and royalty).
3. If more than one lease of different ownership is dedicated to the well, have the interests of all owners been consolidated by communitization, unitization, force-pooling, etc?

☒ Yes ☐ No If answer is "yes," type of consolidation Communitization

If answer is "no," list the owners and tract descriptions which have actually been consolidated. (Use reverse side of this form if necessary.)

No allowable will be assigned to the well until all interests have been consolidated (by communitization, unitization, forced-pooling, or otherwise) or until a non-standard unit, eliminating such interests, has been approved by the Commission.



CERTIFICATION

I hereby certify that the information contained herein is true and complete to the best of my knowledge and belief.

Name  
District Production Manager  
Position  
Southland Royalty Company  
Company  
January 22, 1979  
Date

I hereby certify that the well location shown on this plat was plotted from field notes of actual surveys made by me or under my supervision, and that the same is true and correct to the best of my knowledge and belief.

Date Surveyed  
January 11, 1979  
Registered Professional Engineer and Land Surveyor  
Fred B. Kerr Jr.  
Certificate No.  
3950

DRILLING SCHEDULE - HOLDER "A" #2

Location: 1450' FNL & 1300' FWL, Section 6, T30N, R12W, San Juan County, New Mexico

Field: Blanco Mesaverde

Elevation: 5900' GR

Geology:

Formation Tops:	Ojo Alamo	1100'	Cliff House	3680'
	Fruitland	1730'	Point Lookout	4447'
	Pictured Cliffs	2085'	Total depth	4797' (Add 50' if hole gets wet)
	Intermediate TD	2335'		

Logging Program: GR-Density and GR-Induction at total depth.

Coring Program: None

Natural Gauges: Gauge at last connection above Cliff House, Point Lookout and total depth.  
Gauge any increase in gas flow.

Drilling:

Contractor:

Tool Pusher:

SRC Representative:

SRC Ans. Service: 325-1841

Dispatch Number: 325-7391

Mud Program: Fresh water mud from surface to Intermediate total depth.  
Air from intermediate to total depth.

Materials:

Casing Program:	Hole Size	Depth	Casing Size	Wt. & Grade
	12-1/4"	200'	9-5/8"	36# K-55
	8-3/4"	2335'	7"	20# K-55
	6-1/4"	2185'-4797'	4-1/2"	10.5# K-55

Cementing:

9-5/8" surface casing: 125 cu. ft. (105 sxs) of Class "B" with 1/4# gel flakes per sack and 3% CaCl<sub>2</sub>. (100% excess)

7" intermediate casing: 278 cu. ft. (147 sxs) of 50/50 Class "B" Poz with 6% gel. Mix with 7.2 gals water per sx to weigh 12.85 ppg. Tail in with 50 sxs of Class "B" with 2% CaCl<sub>2</sub>. If lost circulation occurs, add 1/4# celloflake per sx. (50% excess to cover Ojo Alamo.)

4-1/2" liner:

472 cu. ft. Precede cement with 20 bbls gelled water. Cement with 317 sxs of 50/50 Class "B" Poz with 6% gel, 1/4# celloflake and 6% halad 9. Mix water with 7.2 gals water per sx to weigh 12.85 ppg. (70% excess to circulate liner (374 sxs))



**Southland Royalty Company**

January 22, 1979

United States Geological Survey  
P. O. Box 959  
Farmington, New Mexico 87401

Attention:

Dear Sir:

Enclosed please find map showing existing roads and planned access roads to Southland Royalty Company's Holder "A" #2 well. The locations of tank batteries and flow lines will be on location with well. A burn pit will be provided for disposal of trash. Cuttings, drilling fluid and produced fluids will be put into the reserve pit and properly disposed of depending on amount and type of fluids.

Contractor will furnish restroom facilities on location.

There will be no air strips or camps.

Also, enclosed is a location layout showing approximate location of rig, pits and pipe racks and cut required to build this location.

Water supply will be the Animas River. All water will be transported by truck and stored on location.

The location will be restored according to Bureau of Land Management standards. This work will begin when all related construction is finished.

Mr. Max Larson will be Southland Royalty Company's field representative supervising these operations.

Yours truly,



**Southland Royalty Company**

United States Geological Survey  
P. O. Box 959  
Farmington, New Mexico 87401

Attention: Mr. P. T. McGrath

Dear Sir:

I hereby certify that I, or persons under my direct supervision, have inspected the proposed drillsite and access route; that I am familiar with the conditions which presently exist; that the statements made in this plan are, to the best of my knowledge, true and correct; and, that the work associated with the operations proposed herein be performed by Southland Royalty Company and its contractors and subcontractors in conformity with this plan and the terms and conditions under which it is approved.

Date: January 22, 1979

Name: 

Title: District Production Manager



**Southland Royalty Company**

January 22, 1979

United States Geological Survey  
P. O. Box 959  
Farmington, New Mexico

Attention: Blowout Preventer Plan

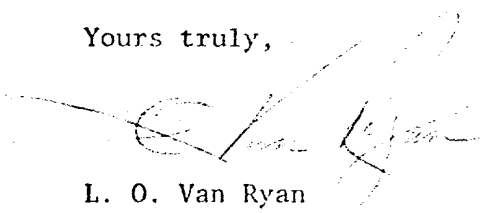
Dear Sir:

All drilling and completion rigs will be equipped with 6" or larger double gate hydraulic blowout preventers and a hydraulic operated closing unit with steel lines.

The preventer is 3000# working pressure and 6000# test.

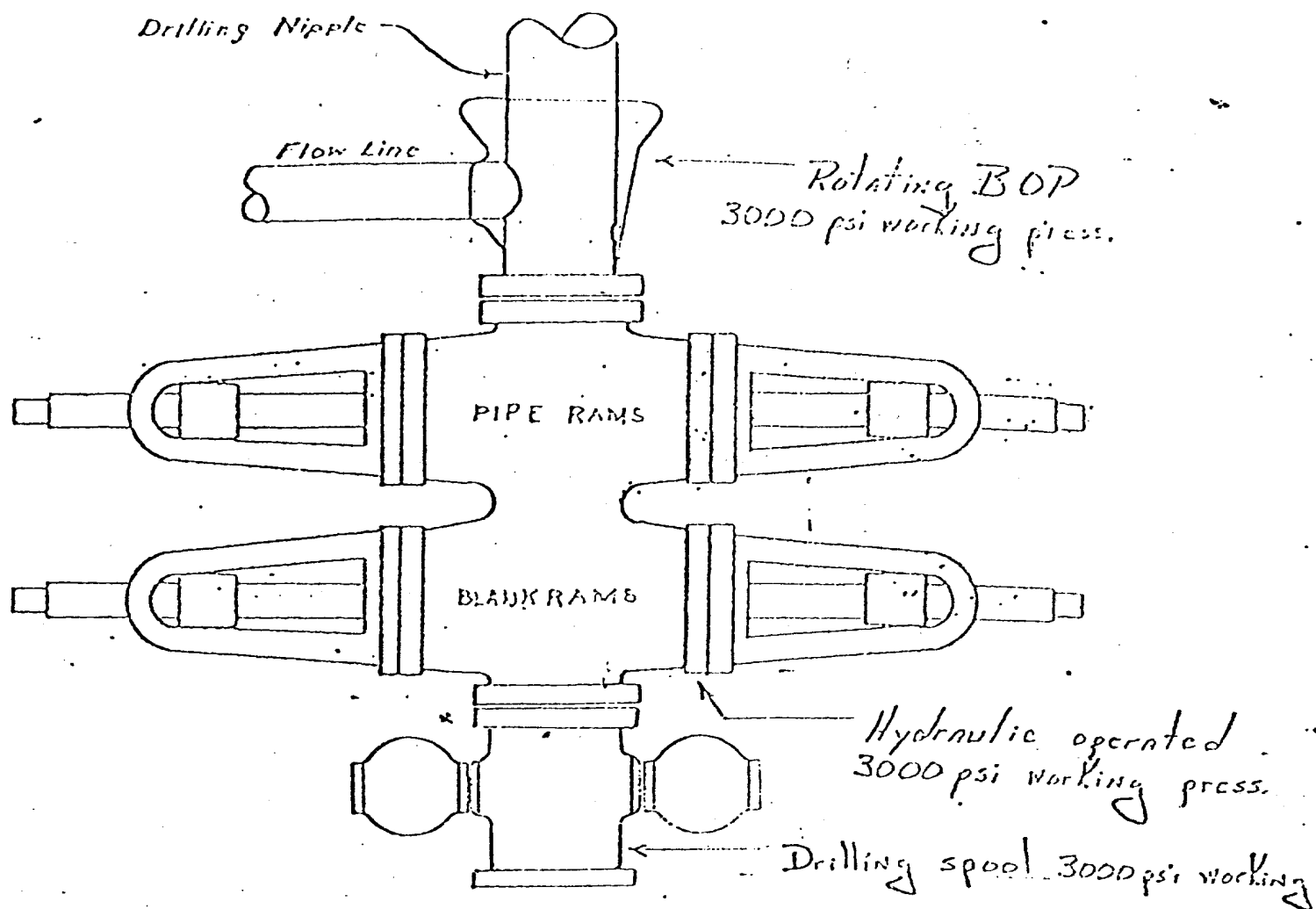
All crews will be thoroughly trained in the operation of this preventer. The preventer will be tested frequently enough to insure proper operation.

Yours truly,



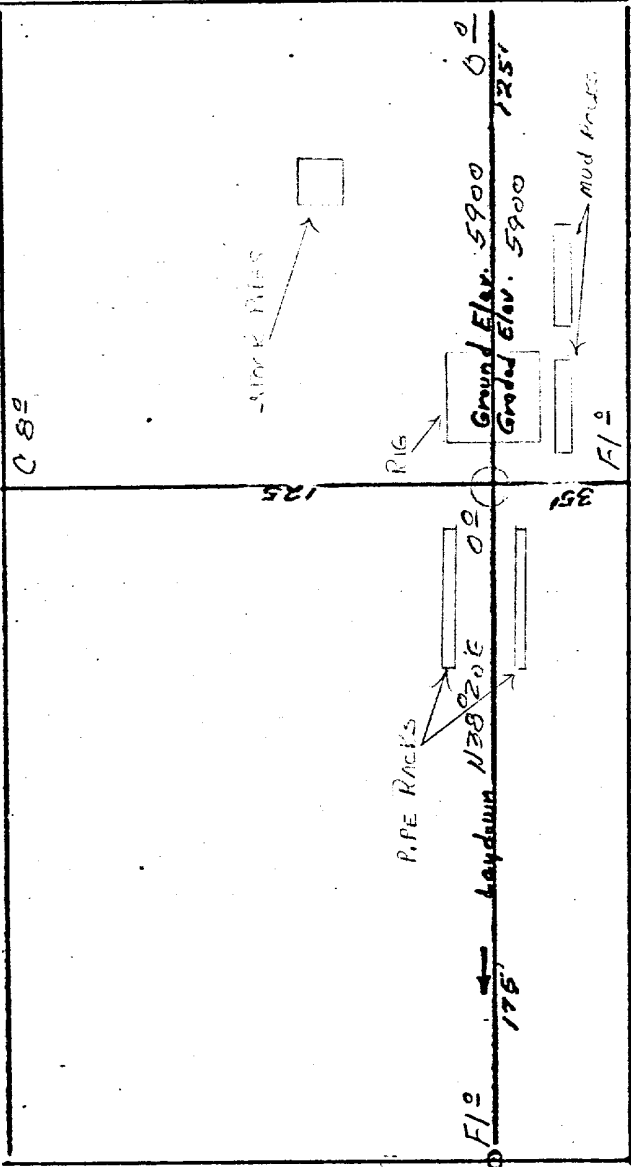
L. O. Van Ryan  
District Production Manager

LOVR/dg



Preventers and spools are to have  
through bore of 6" - 3000# PSI or larger.





SOUTHLAND ROYALTY CO. #2 HOLDER "A"

[illegible]

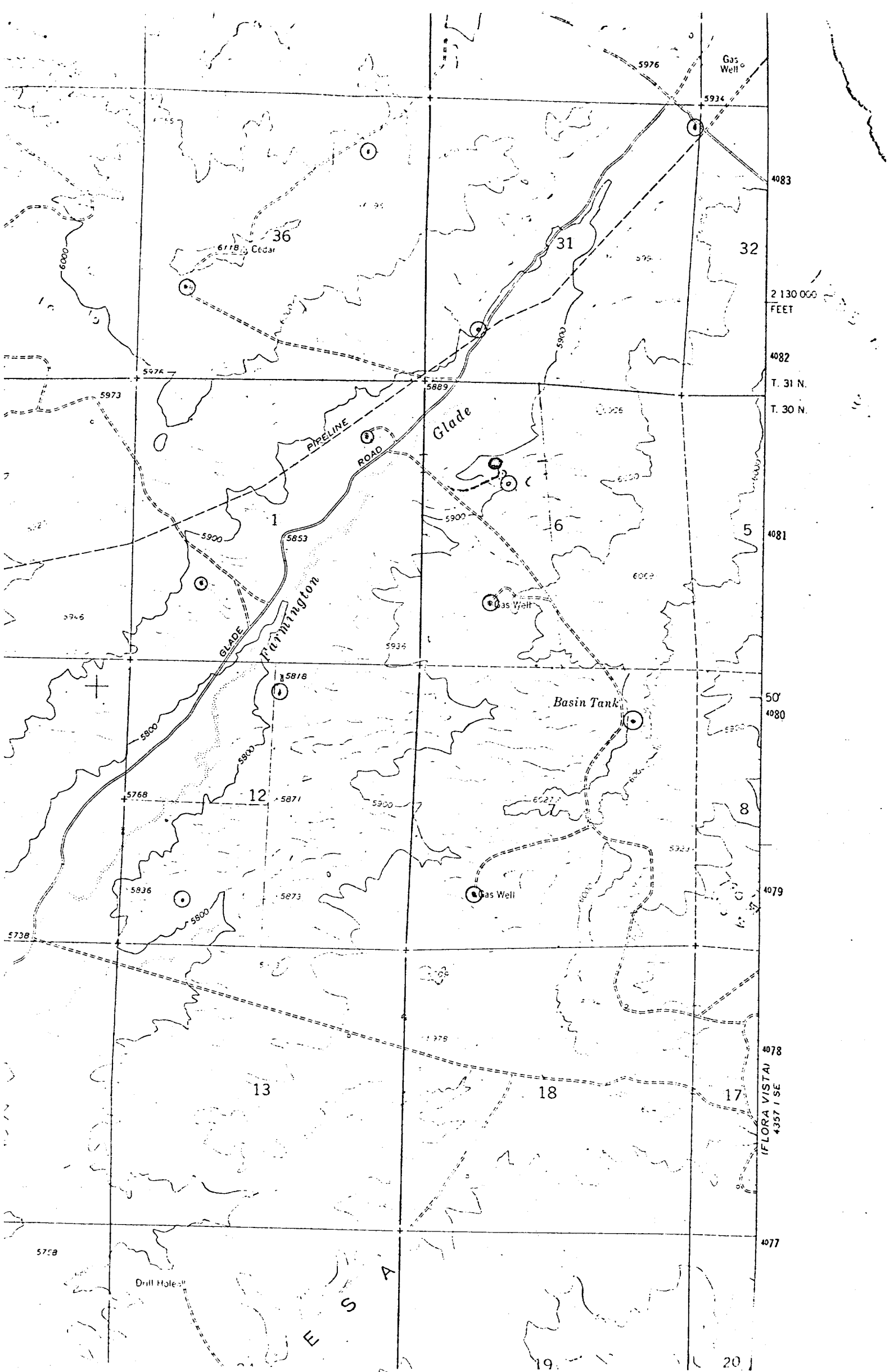
D-D'		E	



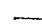
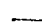
**KERR LAND SURVEYING**  
**Date: January 11, 1979**  
**Fred Kerr**

Vert. 1"=40'	A-A' &	Horiz: 1"=100'
5910		
5900		
5890		

	B-B'	±
5910		
5900		
5890		





PROPOSED LOCATION   
 EXISTING LOCATIONS   
 PROPOSED ROADS   
 EXISTING ROADS 

Vicinity Map for  
 SOUTHLAND ROYALTY CO. #2 HOLDER "A"  
 1450' FNL 1300' FWL Sec 6-T30N-R12W  
 SAN JUAN COUNTY, NEW MEXICO