

30-045-23663

Form C-101  
Revised 1-1-65

NEW MEXICO OIL CONSERVATION COMMISSION

NO. OF COPIES RECEIVED	5
DISTRIBUTION	
SANTA FE	1
FILE	
U.S.G.S.	2
LAND OFFICE	
OPERATOR	1

APPLICATION FOR PERMIT TO DRILL, DEEPEN, OR PLUG BACK

1a. Type of Work

b. Type of Well DRILL  DEEPEN  PLUG BACK

OIL WELL  GAS WELL  OTHER  SINGLE ZONE  MULTIPLE ZONE

2. Name of Operator: El Paso Natural Gas Company

3. Address of Operator: PO Box 289, Farmington, NM 87401

4. Location of Well UNIT LETTER G LOCATED 1730 FEET FROM THE North LINE AND 1380 FEET FROM THE East LINE OF SEC. 30 TWP. 30N RGE. 8W NMPM

5A. Indicate Type of Lease STATE  FEE

5. State Oil & Gas Lease No.

7. Unit Agreement Name

8. Form or Lease Name: Jacquez

9. Well No.: 2

10. Field and Pool, or Wildcat: Blanco PC Ext.

12. County: San Juan

19. Proposed Depth: 2580'

19A. Formation: Pic.Cliffs

20. Rotary or C.T.: Rotary

21. Elevations (Show whether DF, RT, etc.): 5714' GL

21A. Kind & Status Plug. Bond: statewide

21B. Drilling Contractor

22. Approx. Date Work will start

23. PROPOSED CASING AND CEMENT PROGRAM

SIZE OF HOLE	SIZE OF CASING	WEIGHT PER FOOT	SETTING DEPTH	SACKS OF CEMENT	EST. TOP
12 1/4"	8 5/8"	24.0#	120'	100 cu.ft.	surface
6 3/4"	2 7/8"	6.4#	2580'	376 cu.ft.	to cover Ojo Alamo

Selectively perforate and sandwater fracture the Pictured Cliffs formation.

A 3000 psi WP and 6000 psi test double gate preventer equipped with blind and pipe rams will be used for blow out prevention on this well.

This gas is dedicated.

The NE/4 of Section 30 is dedicated to this well.

APPROVAL VALID FOR 90 DAYS UNLESS DRILLING COMMENCED,

EXPIRES 9-27-79



IN ABOVE SPACE DESCRIBE PROPOSED PROGRAM; IF PROPOSAL IS TO DEEPEN OR PLUG BACK, GIVE DATA ON PRESENT PRODUCTIVE ZONE AND PROPOSED NEW PRODUCTIVE ZONE. GIVE BLOWOUT PREVENTER PROGRAM, IF ANY.

I hereby certify that the information above is true and complete to the best of my knowledge and belief.  
Signed A. P. Buisco Title Drilling Clerk Date June 27, 1979

(This space for State Use)  
APPROVED BY Frank S. Cary TITLE DEPUTY OIL & GAS INSPECTOR, DIST. #3 DATE JUN 29 1979

CONDITIONS OF APPROVAL, IF ANY:  
write now

NEW MEXICO OIL CONSERVATION COMMISSION  
WELL LOCATION AND ACREAGE DEDICATION PLAT

Form C-102  
Supersedes C-128  
Effective 1-1-65

All distances must be from the outer boundaries of the Section.

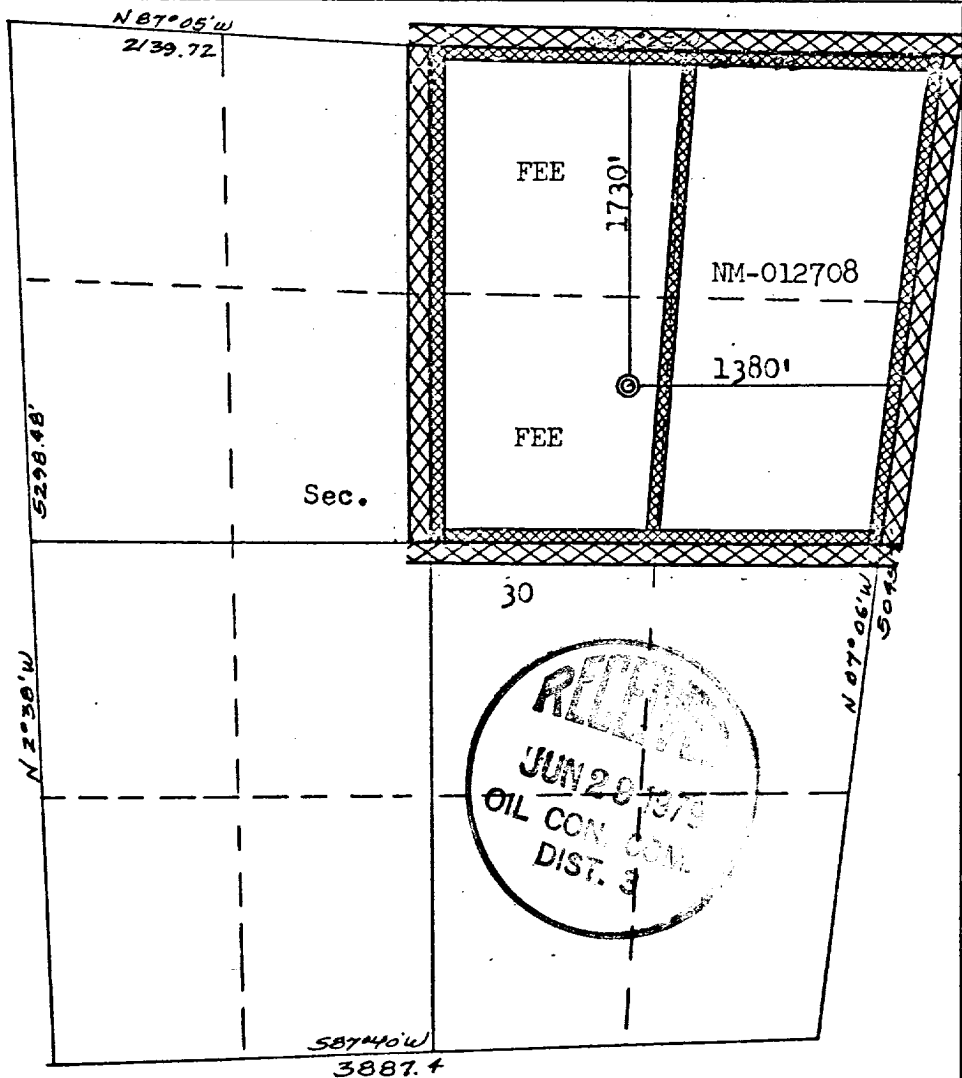
Operator <b>EL PASO NATURAL GAS COMPANY</b>			Lease <b>JACQUEZ (FEE)</b>		Well No. <b>2</b>
Unit Letter <b>G</b>	Section <b>30</b>	Township <b>30N</b>	Range <b>8W</b>	County <b>San Juan</b>	
Actual Footage Location of Well: <b>1730</b> feet from the <b>North</b> line and <b>1380</b> feet from the <b>East</b> line					
Ground Level Elev: <b>5724</b>	Producing Formation <b>Pictured Cliffs</b>		Pool <b>BLANCO PICTURED CLIFFS EXT.</b>	Dedicated Acreage: <b>152.65</b> Acres	

1. Outline the acreage dedicated to the subject well by colored pencil or hachure marks on the plat below.
2. If more than one lease is dedicated to the well, outline each and identify the ownership thereof (both as to working interest and royalty).
3. If more than one lease of different ownership is dedicated to the well, have the interests of all owners been consolidated by communitization, unitization, force-pooling, etc?

Yes  No If answer is "yes," type of consolidation Communitization

If answer is "no," list the owners and tract descriptions which have actually been consolidated. (Use reverse side of this form if necessary.) \_\_\_\_\_

No allowable will be assigned to the well until all interests have been consolidated (by communitization, unitization, forced-pooling, or otherwise) or until a non-standard unit, eliminating such interests, has been approved by the Commission.



CERTIFICATION

I hereby certify that the information contained herein is true and complete to the best of my knowledge and belief.

*D. G. Buice*

Name  
Drilling Clerk  
Position  
El Paso Natural Gas Co.  
Company  
June 27, 1979  
Date

I hereby certify that the well location shown on this plat was plotted from field notes of actual surveys made by me or under my supervision, and that the same is true and correct to the best of my knowledge and belief.

Date Surveyed  
June 1, 1979  
Registered Professional Engineer and Land Surveyor  
*Fred S. Kerr Jr.*  
Fred S. Kerr Jr.  
Certificate No.  
3950