

NO. OF COPIES RECEIVED	5
DISTRIBUTION	
SANTA FE	1
FILE	
U.S.G.S.	2
LAND OFFICE	
OPERATOR	1

NEW MEXICO OIL CONSERVATION COMMISSION

30-045-24156
Form C-101
Revised 1-1-65

5A. Indicate Type of Lease	
STATE <input type="checkbox"/>	FEE <input checked="" type="checkbox"/>
5. State Oil & Gas Lease No.	

APPLICATION FOR PERMIT TO DRILL, DEEPEN, OR PLUG BACK

1a. Type of Work		7. Unit Agreement Name	
b. Type of Well OIL WELL <input type="checkbox"/> GAS WELL <input checked="" type="checkbox"/> OTHER <input type="checkbox"/>		8. Farm or Lease Name Lester	
2. Name of Operator Supron Energy Corporation		9. Well No. 1-A	
3. Address of Operator P.O. Box 808, Farmington, New Mexico 87401		10. Field and Pool, or Wildcat Blanco Mesaverde	
4. Location of Well UNIT LETTER D LOCATED 880 FEET FROM THE North LINE AND 930 FEET FROM THE West LINE OF SEC. 3 TWP. 30N RGE. 11W NMPM		12. County San Juan	
19. Proposed Depth 5000Ft.		19A. Formation Mesaverde	
20. Rotary or C.T. Rotary		21. Elevations (Show whether DF, RT, etc.) 5639	
21A. Kind & Status Plug. Bond Current \$50,000. Blanket		21B. Drilling Contractor Unknown at Present	
22. Approx. Date Work will start 1-15-80			

23. PROPOSED CASING AND CEMENT PROGRAM

SIZE OF HOLE	SIZE OF CASING	WEIGHT PER FOOT	SETTING DEPTH	SACKS OF CEMENT	EST. TOP
12-1/4"	8-5/8"	24.00#	300 Ft.	300 Sx.	Surface
7-7/8"	4-1/2"	10.50#	5000 Ft.	325 Sx. 1st 250 Sx. 2nd	Surface

We propose to drill this well using mud as a circulating medium from surface to proposed T.D. Production casing will be run and cemented. The production casing will then be perforated and sand-water frac'd. Tubing will then be run and set at approximately 4300 ft. The well head will be nipped down and the well tested.

gas is dehydrated

APPROVED BY
RUDY D. MOTTO
DISTRICT SUPERINTENDENT
EXPIRES 4-8-80



IN ABOVE SPACE DESCRIBE PROPOSED PROGRAM; IF PROPOSAL IS TO DEEPEN OR PLUG BACK, GIVE DATA ON PRESENT PRODUCTIVE ZONE AND PROPOSED NEW PRODUCTIVE ZONE. GIVE BLOWOUT PREVENTER PROGRAM, IF ANY.

I hereby certify that the information above is true and complete to the best of my knowledge and belief.

Signed Rudy D. Motto Title Area Superintendent Date October 22, 1979
(This space for State Use)

APPROVED BY Frank S. Cherry TITLE DEPUTY OIL & GAS DISTRICT SUPERINTENDENT DATE JAN 9 1980
CONDITIONS OF APPROVAL, IF ANY:

**NEW MEXICO OIL CONSERVATION COMMISSION
WELL LOCATION AND ACREAGE DEDICATION PLAT**

Form C-102
Supersedes C-12
Effective 1-1-65

All distances must be from the outer boundaries of the Section.

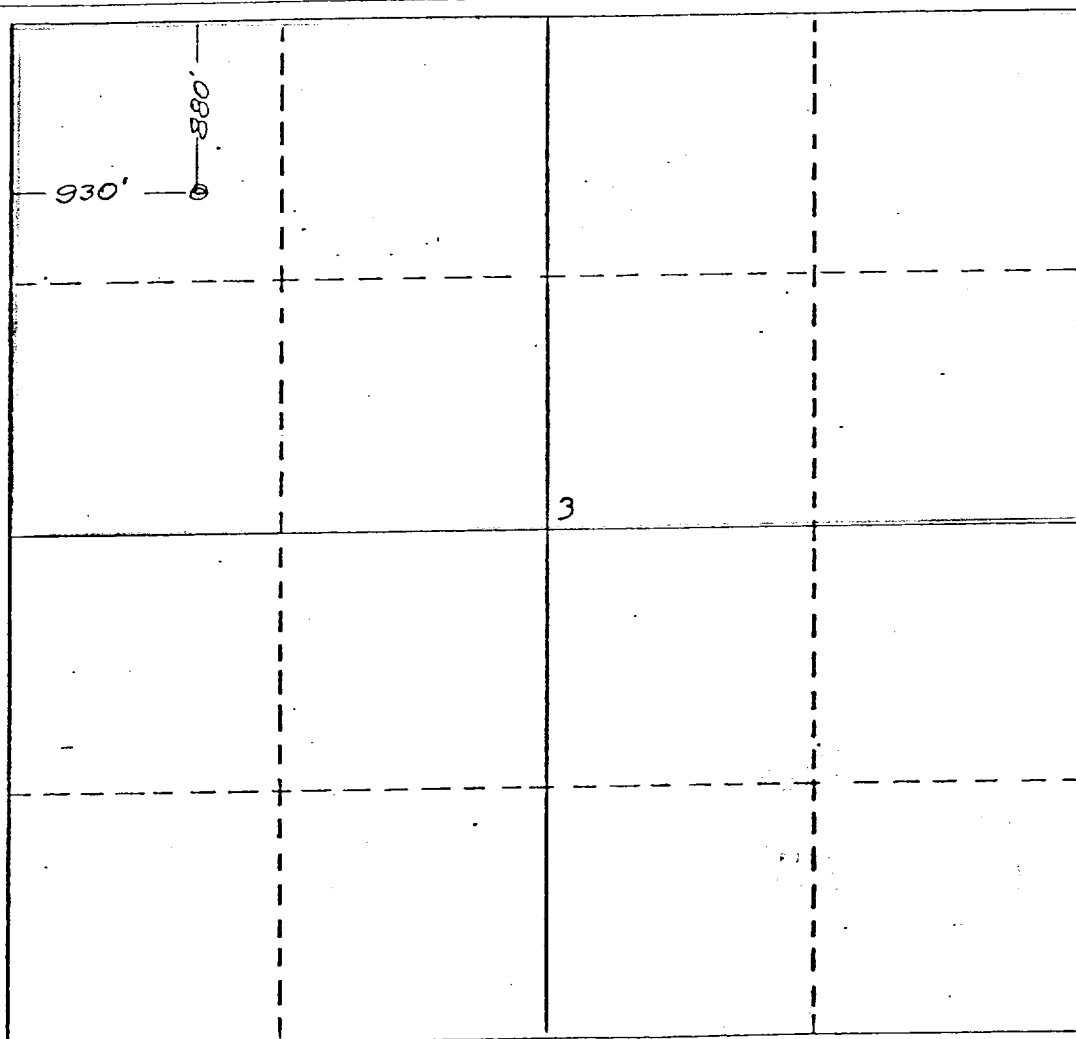
Operator SUPRON ENERGY CORPORATION			Lease LESTER		Well No. 1-A
Unit Letter D	Section 3	Township 30 NORTH	Range 11 WEST	County SAN JUAN	
Actual Footage Location of Well:					
880 feet from the NORTH line and		930 feet from the WEST line			
Ground Level Elev. 5639	Producing Formation MESAVERDE	Pool BLANCO		Dedicated Acreage: N 1/2 320.40 Acres	

1. Outline the acreage dedicated to the subject well by colored pencil or hachure marks on the plat below.
2. If more than one lease is dedicated to the well, outline each and identify the ownership thereof (both as to working interest and royalty).
3. If more than one lease of different ownership is dedicated to the well, have the interests of all owners been consolidated by communitization, unitization, force-pooling, etc?

☐ Yes ☐ No If answer is "yes," type of consolidation _____

If answer is "no," list the owners and tract descriptions which have actually been consolidated. (Use reverse side of this form if necessary.) _____

No allowable will be assigned to the well until all interests have been consolidated (by communitization, unitization, forced-pooling, or otherwise) or until a non-standard unit, eliminating such interests, has been approved by the Commission.



CERTIFICATION

I hereby certify that the information contained herein is true and complete to the best of my knowledge and belief.

Rudy D. Motto

Name

Rudy D. Motto

Position

Area Superintendent

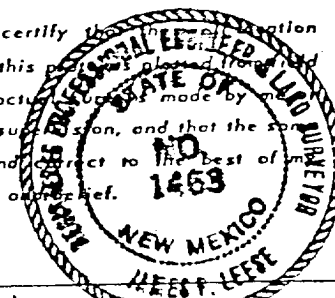
Company

Supron Energy Corporation

Date

April 26, 1979

I hereby certify that the information shown on this plat is true and complete to the best of my knowledge and belief.



Date Surveyed

24 April 1979

Registered Professional Engineer
and/or Land Surveyor

James P. Leese
James P. Leese

Certificate No.

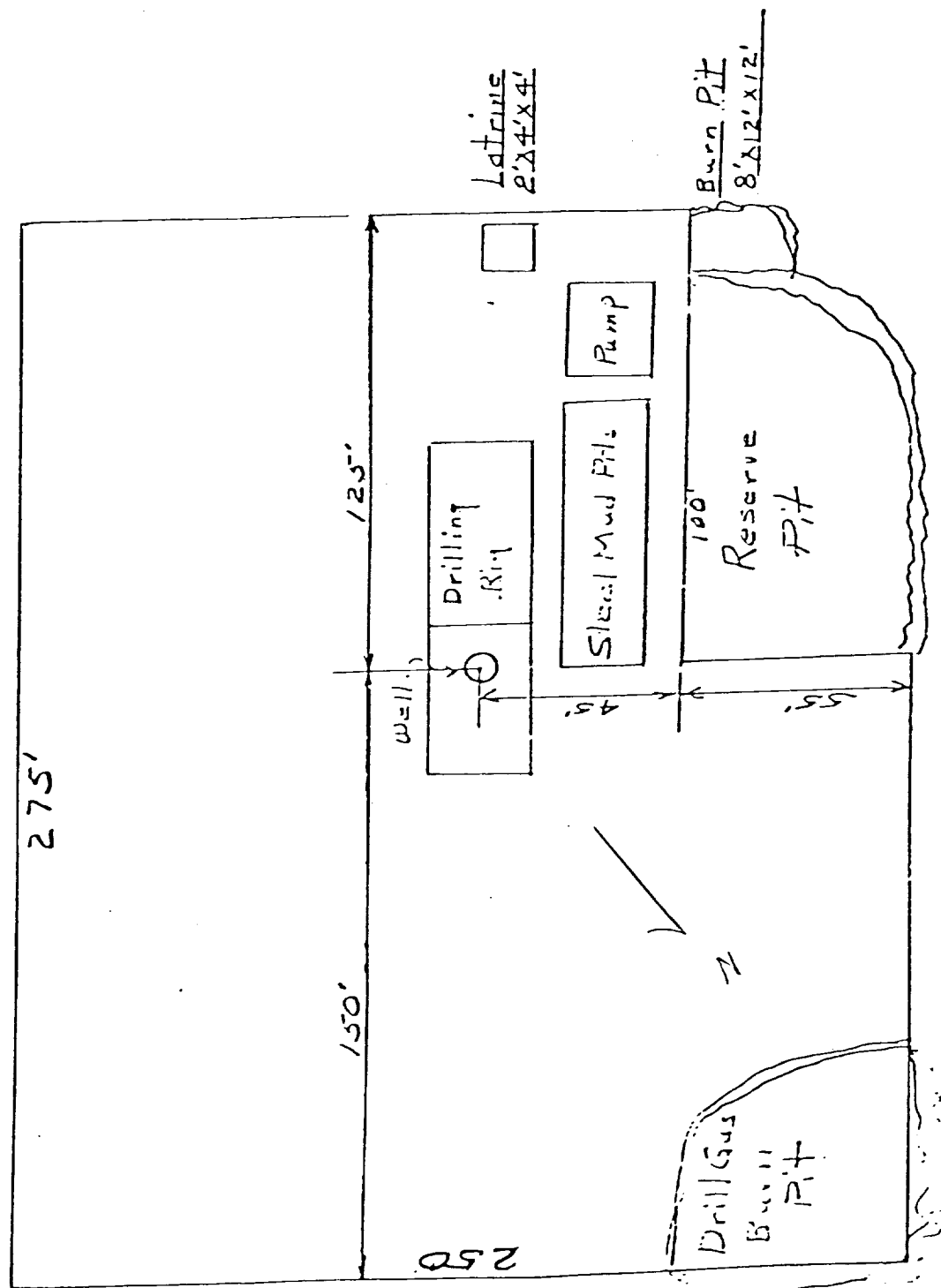
1463

0 330 660 990 1320 1650 1980 2310 2640 2000 1500 1000 500 0

LOCATION AND EQUIPMENT LAYOUT

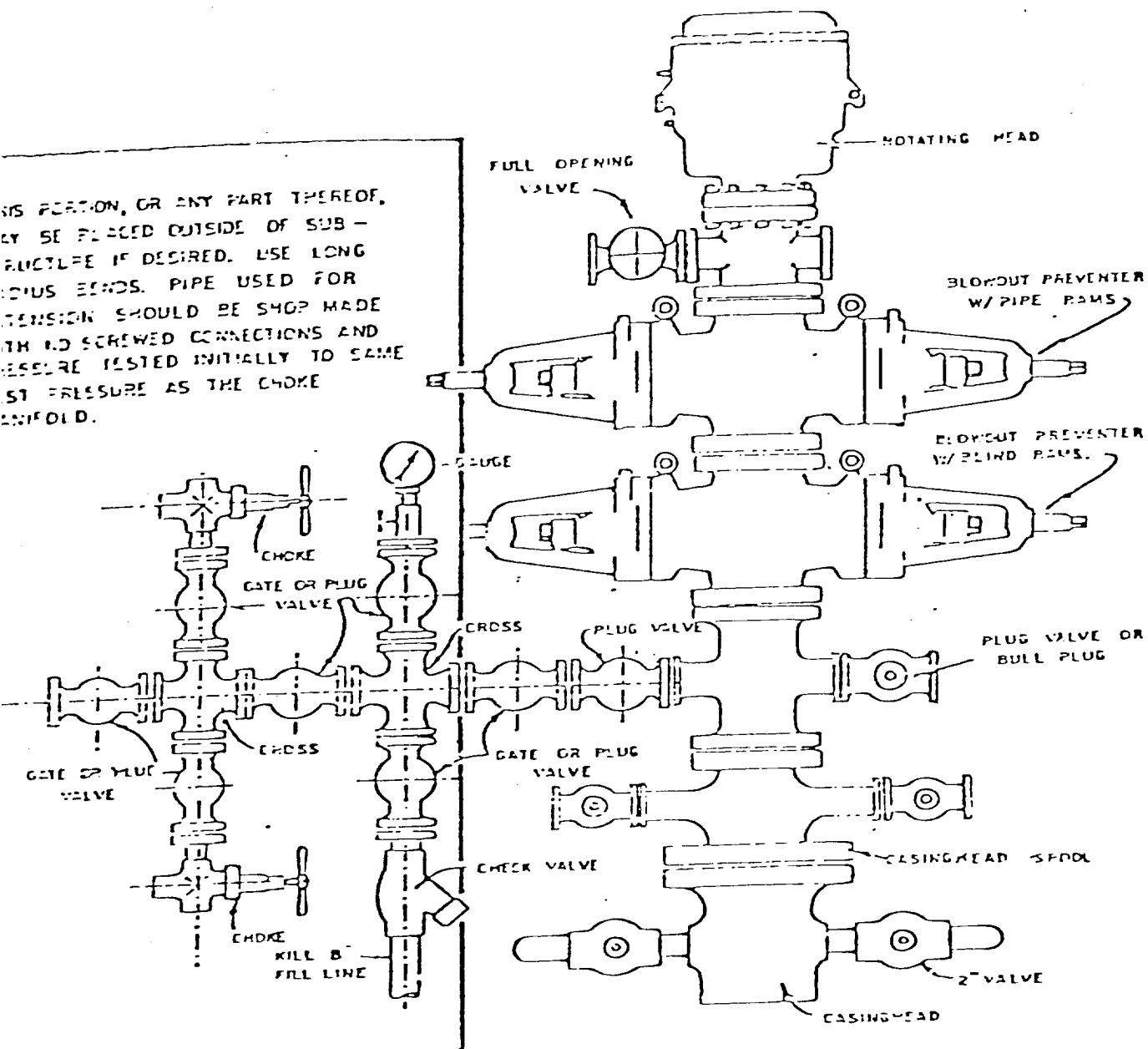
LESTER NO. 1-A

880 Feet from the North line and 930 feet from the West line of Section 3, Township 30 North, Range 11 West, N.M.P.M., San Juan County, New Mexico.



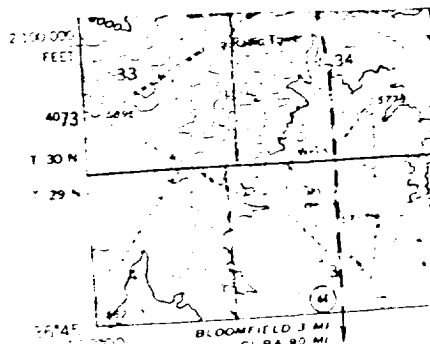
Blowout Preventer will be tested daily and prior to drilling out with the results to be logged on the drillers report.

The B.O.P. and all valve and fittings are rated at 3000 psi working pressure, and hydraulically operated

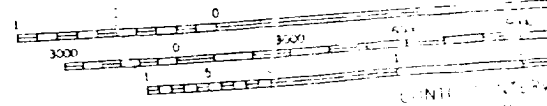
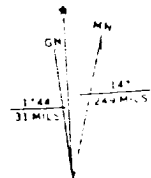


BLOWOUT PREVENTER HOOKUP

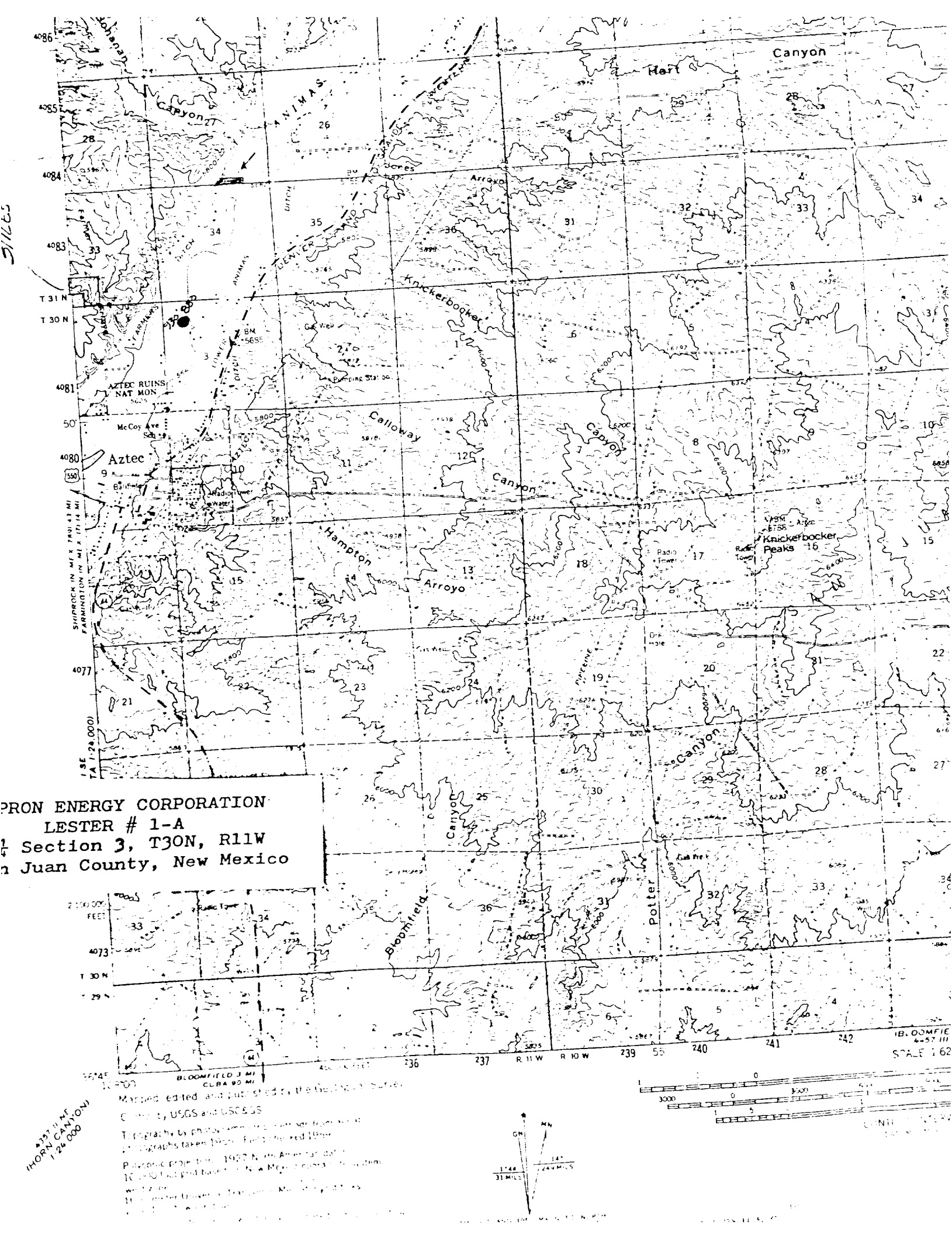
PRON ENERGY CORPORATION
LESTER # 1-A
1/4 Section 3, T30N, R11W
in Juan County, New Mexico

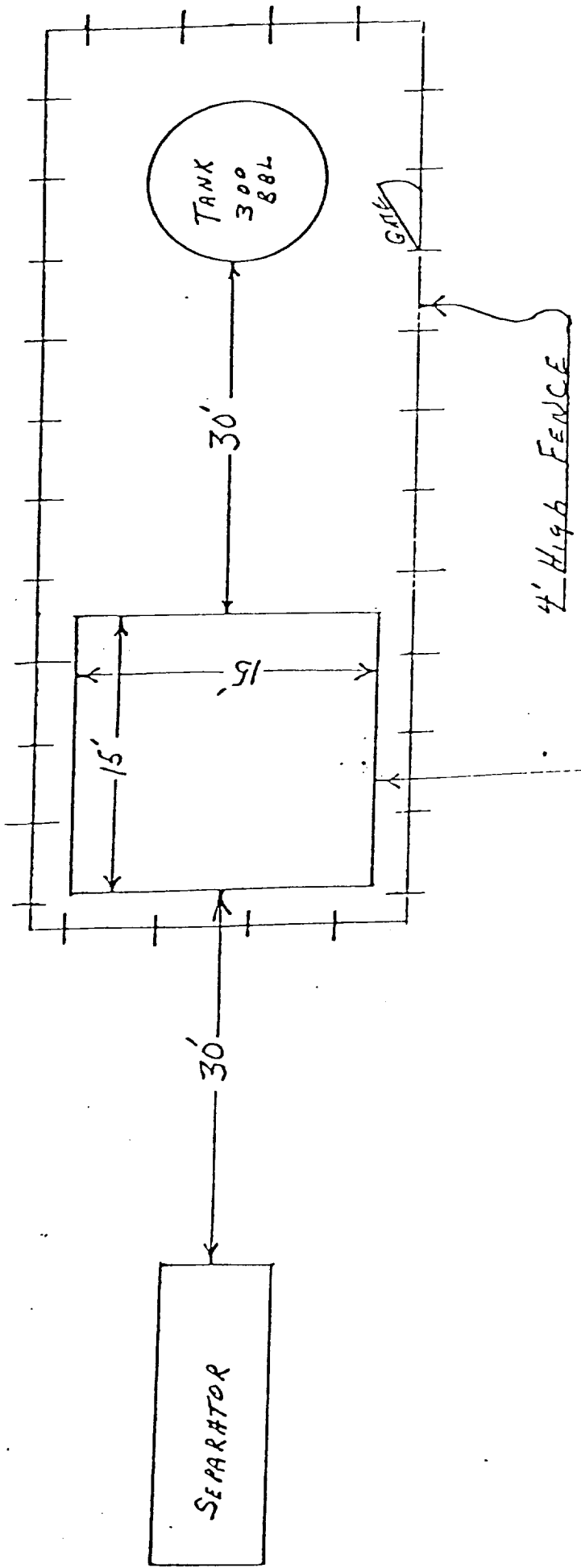


Map made, edited and published by the Geological Survey,
Contract, USGS and USGS
Topography by photogrammetry from aerial
photographs taken 1960. Horizontal datum
Pulkovo projection, 1900 North American datum
1983 datum and base on New Mexico coordinate system
with 2 zone
Horizontal datum: Transverse Mercator projection
with 2 zone



SCALE 1:62,500





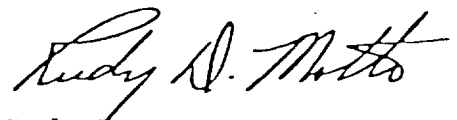
SUPRON ENERGY CORPORATION

Post Office Box 808

FARMINGTON, NEW MEXICO 87401

I hereby certify that I, or persons under my direct supervision, have inspected the proposed drillsite and access route; that I am familiar with the conditions which presently exist; that the statements made in this plan are, to the best of my knowledge, true and correct; and, that the work associated with the operations proposed herein will be performed by SUPRON ENERGY CORPORATION and its contractors subcontractors in conformity with this plan and the terms and conditions under which it is approved.

SUPRON ENERGY CORPORATION

A handwritten signature in cursive script, reading "Rudy D. Motto".

Rudy D. Motto
Area Superintendent
Phone: 325-3587