

NEW MEXICO OIL CONSERVATION COMMISSION
WELL LOCATION AND ACREAGE DEDICATION PLAT

Form O-100
Supersedes Co.
Effective 1-1-68

All distances must be from the outer boundaries of the Section.

Operator Dugan Production Corporation			Lease Dare Devil		Well No. 2
Unit Letter L	Section 10	Township 30 North	Range 13 West	County San Juan	

Actual Footage Location of Well:
1840 feet from the South line and 790 feet from the West line

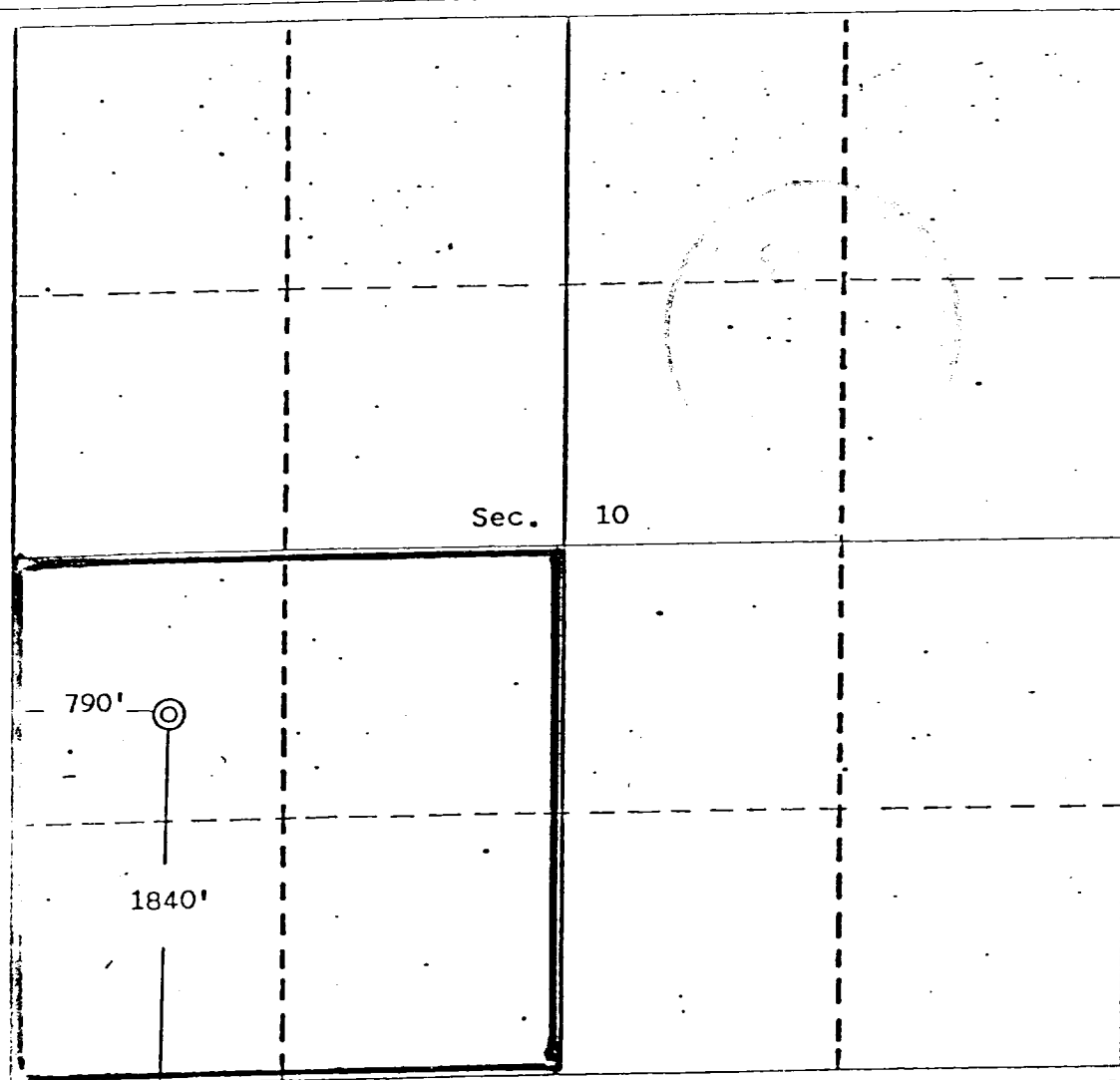
Ground Level Elev. 5720	Producing Formation Fruitland	Pool Undesignated Fruitland	Dedicated Acreage: 160 Acres
----------------------------	----------------------------------	--------------------------------	---------------------------------

1. Outline the acreage dedicated to the subject well by colored pencil or hachure marks on the plat below.
2. If more than one lease is dedicated to the well, outline each and identify the ownership thereof (both as to working interest and royalty).
3. If more than one lease of different ownership is dedicated to the well, have the interests of all owners been consolidated by communitization, unitization, force-pooling, etc?

☐ Yes ☐ No If answer is "yes," type of consolidation _____

If answer is "no," list the owners and tract descriptions which have actually been consolidated. (Use reverse side of this form if necessary.) _____

No allowable will be assigned to the well until all interests have been consolidated (by communitization, unitization, forced-pooling, or otherwise) or until a non-standard unit, eliminating such interests, has been approved by the Commission.



CERTIFICATION

I hereby certify that the information contained herein is true and complete to the best of my knowledge and belief.

Jim L. Jacobs
Name

Jim L. Jacobs

Geologist

Dugan Production Corp.

Date
10-7-82

I hereby certify that the well location shown on this plat was obtained from field notes of actual surveys conducted by me or under my supervision and that the same is true and correct to the best of my knowledge and belief.

Date Surveyed
August 12, 1980

Registered Professional Engineer
and/or Land Surveyor

Edgar L. Risenhoover
Certificate No. 5979

Edgar L. Risenhoover, L.S.