

STATE OF NEW MEXICO  
ENERGY AND MINERALS DEPARTMENT

OIL CONSERVATION DIVISION

P. O. BOX 2088

SANTA FE, NEW MEXICO 87501

30-045-24694  
Form C-101  
Revised 10-1-78

NO. OF COPIES RECEIVED	
DISTRIBUTION	
SANTA FE	
FILE	
U.S.G.S.	
LAND OFFICE	
OPERATOR	

5A. Indicate Type of Lease  
STATE ☐ FEE ☒  
5. State Oil & Gas Lease No.

APPLICATION FOR PERMIT TO DRILL, DEEPEN, OR PLUG BACK

1a. Type of Work b. Type of Well OIL WELL <input type="checkbox"/> GAS WELL <input checked="" type="checkbox"/> OTHER <input type="checkbox"/> 2. Name of Operator C & E Operators 3. Address of Operator One Energy Square, Suite 170, Dallas, Texas 75206 4. Location of Well UNIT LETTER <u>H</u> LOCATED <u>2280</u> FEET FROM THE <u>North</u> LINE AND <u>790</u> FEET FROM THE <u>East</u> LINE OF SEC. <u>8</u> TWP. <u>30N</u> RGE. <u>11W</u> NMPM 11. Elevations (Show whether DF, RT, etc.) 5616' Gr. 21A. Kind & Status Plug, Bond Blanket 21B. Drilling Contractor Y-W Drilling Co. 22. Approx. Date Work will start on Approval		7. Unit Agreement Name 8. Farm or Lease Name Fee 9. Well No. 8 10. Field and Pool, or Whide Aztec PC & Blanco M 12. County San Juan 19. Proposed Depth 4750 19A. Formation Mancos 20. Rotary or C.T. Rotary
--	--	---

23.

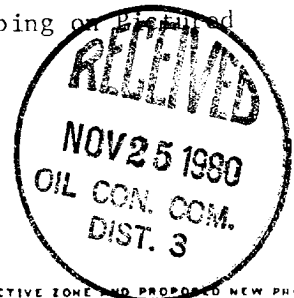
PROPOSED CASING AND CEMENT PROGRAM

SIZE OF HOLE	SIZE OF CASING	WEIGHT PER FOOT	SETTING DEPTH	SACKS OF CEMENT	EST. TOP
12-1/4"	9-5/8"	36	250+	130 3% CaCl	Surface
8-3/4"	7"	23	4750	280	3000' 1st st
	Stage collar	@ approx. 2150'	& cement w/320		Surface

Propose to set 9-5/8" casing with spud mud. Cement back to surface. WOC - 8 hrs. Install BOP's and bleed off lines. Press. test to 600 psi - 30 min. Drill 8-3/4" hole with light gel-chemical mud to TD. Run IES & GR D/N Logs. Run 7" casing and stage cement. Perf. & stimulate Mesaverde zone; set BP; Perf. & stimulate Pictured Cliffs zone. Clean up PC; mill out plug; clean up Mesaverde. Set Baker Mod. "D" packer. Ran 2-3/8" tubing with seals on Mesaverde. Run 1-1/4" IJ tubing on Pictured Cliffs. Install dual well head; clean up and test.  
(Location inside City limits of Aztec).

APPROVAL VALID  
FOR 90 DAYS UNLESS  
OTHERWISE SPECIFIED

2-23-81



IN ABOVE SPACE DESCRIBE PROPOSED PROGRAM; IF PROPOSAL IS TO DEEPEN OR PLUG BACK, GIVE DATA ON PRESENT PRODUCTIVE ZONE AND PROPOSED NEW PRODUCTIVE ZONE. GIVE BLOWOUT PREVENTER PROGRAM, IF ANY.

I hereby certify that the information above is true and complete to the best of my knowledge and belief.

Signed John M. Heller Title Consultant Date 11-24-80  
NM Reg. Eng. No. 4361, P.O. Box 1507, Durango, CO

(This space for State Use)

Original Signed by CHARLES GHOLSON

APPROVED BY

TITLE

DATE

CONDITIONS OF APPROVAL, IF ANY:

DEPUTY OIL & GAS ENGINEER, DIST. 3

NOV 25 1980

Hold for 10/1/81

NEW MEXICO OIL CONSERVATION COMMISSION  
WELL LOCATION AND ACREAGE DEDICATION PLAT

Form C-102  
Supersedes C-128  
Effective 1-1-65

All distances must be from the outer boundaries of the Section.

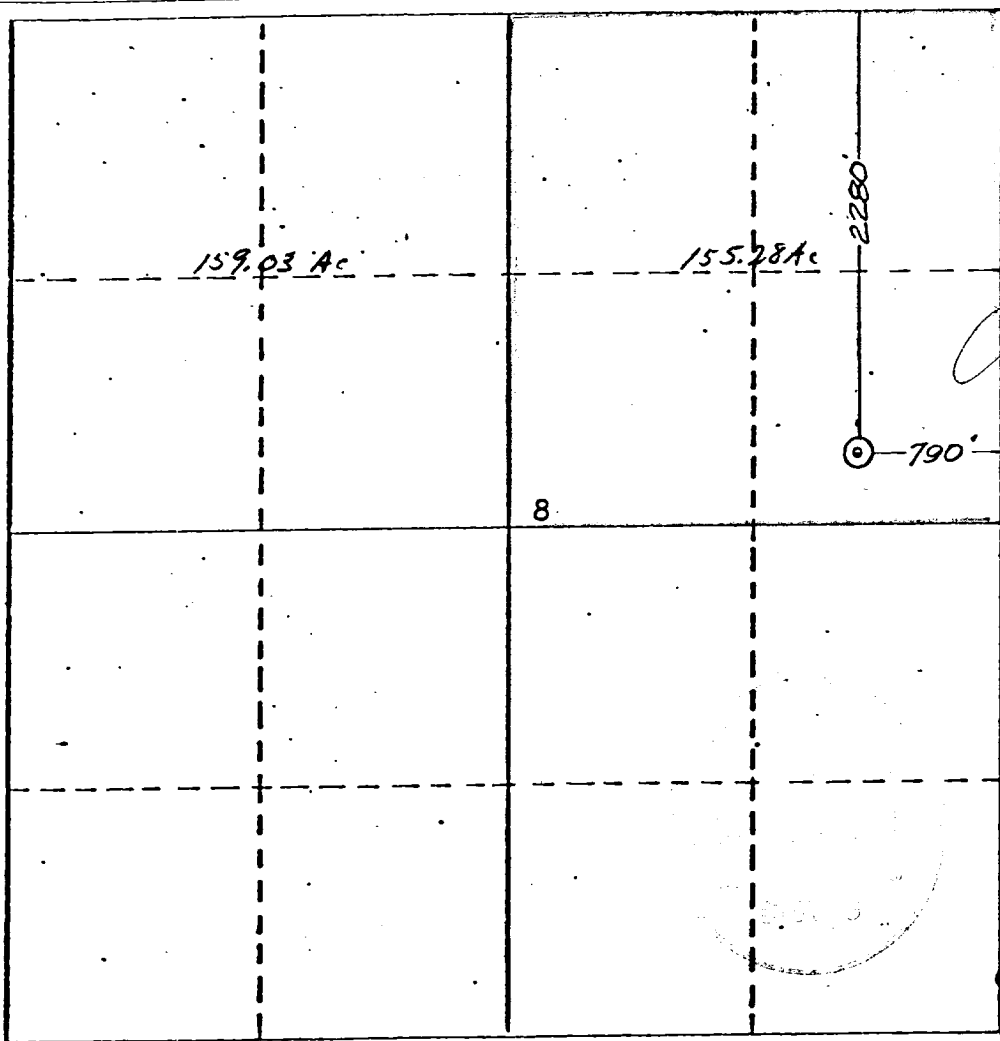
Operator <b>C &amp; E OPERATORS, INC.</b>			Lease <b>FEE</b>		Well No. <b>8</b>
Unit Letter <b>H</b>	Section <b>8</b>	Township <b>30NORTH</b>	Range <b>11 WEST</b>	County <b>SAN JUAN</b>	
Actual Footage Location of Well: <b>2280</b> feet from the <b>NORTH</b> line and <b>790</b> feet from the <b>EAST</b> line <b>NV</b>					
Ground Level Elev. <b>5616</b>	Producing Formation <b>Mesaverde Pictured Cliffs</b>	Pool <b>Planco MV Aztec PC</b>	Dedicated Acreage: <b>314.31</b> <b>155.28</b> Acres		

1. Outline the acreage dedicated to the subject well by colored pencil or hatchure marks on the plat below.
2. If more than one lease is dedicated to the well, outline each and identify the ownership thereof (both as to working interest and royalty).
3. If more than one lease of different ownership is dedicated to the well, have the interests of all owners been consolidated by communitization, unitization, force-pooling, etc? **N/A**

☐ Yes ☐ No If answer is "yes," type of consolidation \_\_\_\_\_

If answer is "no," list the owners and tract descriptions which have actually been consolidated. (Use reverse side of this form if necessary.) \_\_\_\_\_

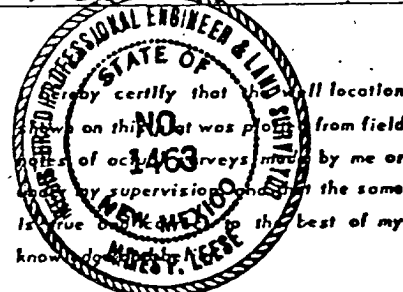
No allowable will be assigned to the well until all interests have been consolidated (by communitization, unitization, forced-pooling, or otherwise) or until a non-standard unit, eliminating such interests, has been approved by the Commission.



CERTIFICATION

I hereby certify that the information contained herein is true and complete to the best of my knowledge and belief.

Name **John M. Keller**  
Position **Consultant**  
Company **C & E Operators**  
Date **Nov 24, 1980**



Date Surveyed  
**OCTOBER 27, 1980**  
Registered Professional Engineer  
and/or Land Surveyor

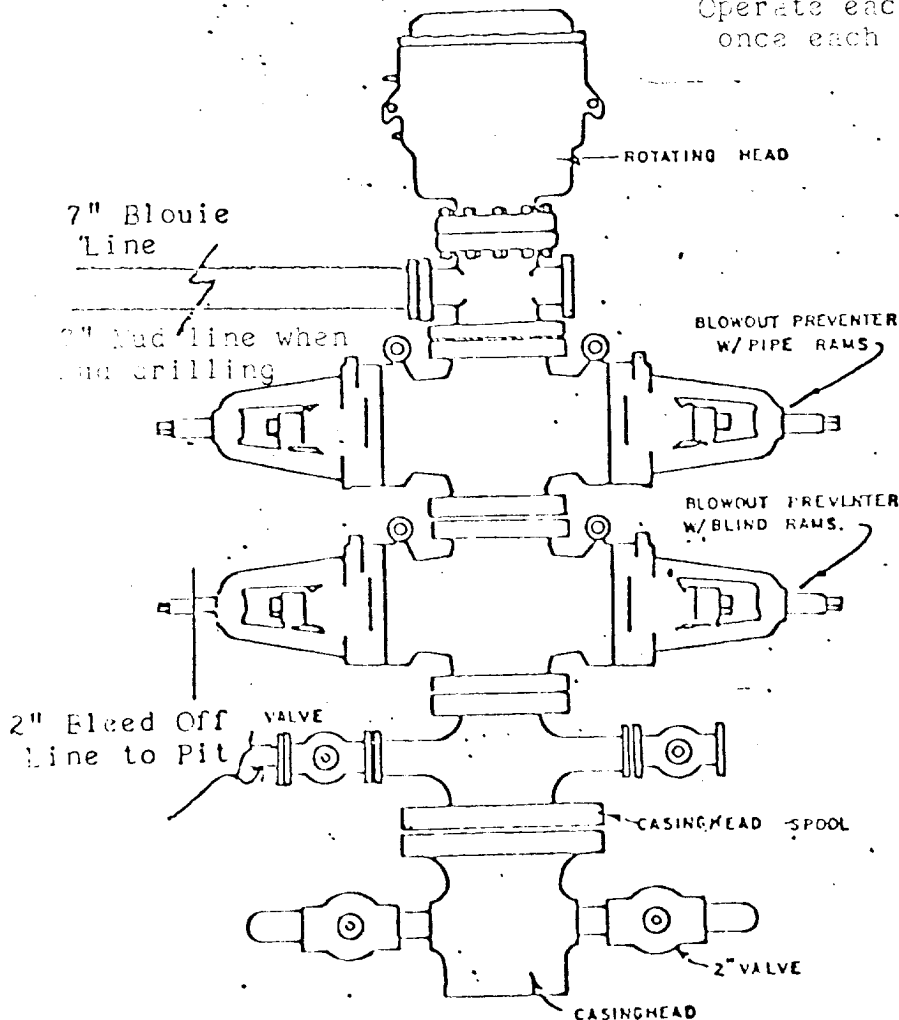
**James P. Leese**  
Certificate No.

**1463**

## C & E Operators

Typical Blowout Preventer  
Installation for Mesaverde and  
Pictured Cliffs Wells.  
10" Series 200 3000 psi. BP

Pressure test to 600 psi. on  
surface casing.  
Pressure test to 300 psi. on  
intermediate casing strings.  
Operate each trip and or at least  
once each 24 hour period.



BLOWOUT PREVENTER HOOKUP