

UNITED STATES
DEPARTMENT OF THE INTERIOR
GEOLOGICAL SURVEY

30-045-24918
5. LEASE DESIGNATION AND SERIAL NO.
SF 0780247 078204A

APPLICATION FOR PERMIT TO DRILL, DEEPEN, OR PLUG BACK

6. IF INDIAN, ALLOTTEE OR TRIBE NAME
7. UNIT AGREEMENT NAME

8. FARM OR LEASE NAME
Bassett Gas Unit

9. WELL NO.
1M
10. FIELD AND POOL, OR WELLS AT
Blanco Mesa Verde/Dakota

11. SEC., T., R., M., OR BLK. AND SURVEY OR AREA
Sec. 33, T30N, R10W

12. COUNTY OR PARISH 13. STATE
San Juan N.M.

17. NO. OF ACRES ASSIGNED TO THIS WELL
w/321.48 320 w/321.48

20. ROTARY OR CABLE TOOLS
Rotary
22. APPROX. DATE WORK WILL START*
April 1981

18. NO. OF ACRES IN LEASE
319.26

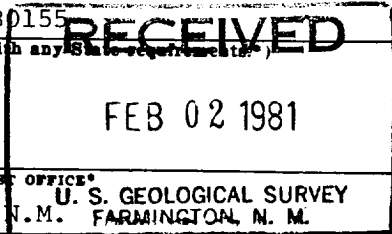
19. PROPOSED DEPTH
±7025'

21. ELEVATIONS (Show whether DF, RT, GR, etc.)
6019' GR

14. DISTANCE IN MILES AND DIRECTION FROM NEAREST TOWN OR POST OFFICE*
Approximately 4 1/2 miles NW of Blanco, N.M. FARMINGTON, N. M.

10. DISTANCE FROM PROPOSED* LOCATION TO NEAREST PROPERTY OR LEASE LINE, FT. (Also to nearest drig. unit line, if any)
790'

18. DISTANCE FROM PROPOSED LOCATION* TO NEAREST WELL, DRILLING, COMPLETED, OR APPLIED FOR, ON THIS LEASE, FT.



1A. TYPE OF WORK
DRILL DEEPEN PLUG BACK

B. TYPE OF WELL
OIL WELL GAS WELL OTHER SINGLE ZONE MULTIPLE ZONE

2. NAME OF OPERATOR
Tenneco Oil Company

3. ADDRESS OF OPERATOR
P.O. Box 3249, Englewood, Colorado 80155

4. LOCATION OF WELL (Report location clearly and in accordance with any State regulations.)
At surface 1520 FSL, 790 FWL
At proposed prod. zone same as above

14. DISTANCE IN MILES AND DIRECTION FROM NEAREST TOWN OR POST OFFICE*
Approximately 4 1/2 miles NW of Blanco, N.M. FARMINGTON, N. M.

10. DISTANCE FROM PROPOSED* LOCATION TO NEAREST PROPERTY OR LEASE LINE, FT. (Also to nearest drig. unit line, if any)
790'

18. DISTANCE FROM PROPOSED LOCATION* TO NEAREST WELL, DRILLING, COMPLETED, OR APPLIED FOR, ON THIS LEASE, FT.

21. ELEVATIONS (Show whether DF, RT, GR, etc.)
6019' GR

PROPOSED CASING AND CEMENTING PROGRAM

SIZE OF HOLE	SIZE OF CASING	WEIGHT PER FOOT	SETTING DEPTH	QUANTITY OF CEMENT
12 1/4"	9 5/8" new	36#	±250'	Circulate to surface
8 3/4"	7" new	23#	±5400'	Circulate to surface
6 1/4"	4 1/2" new	10.5#, 11.6#	±7025'	Circulate to liner top

CONDITIONS AUTHORIZED ARE
SEE WITH ATTACHED
See attached.

The gas is dedicated.

IN ABOVE SPACE DESCRIBE PROPOSED PROGRAM: If proposal is to deepen or plug back, give data on present productive zone and proposed new productive zone. If proposal is to drill or deepen directionally, give pertinent data on subsurface locations and measured and true vertical depths. Give blowout preventer program, if any.

24. SIGNED A. A. Mishler Mishler TITLE Sr. Production Analyst DATE January 27, 1981

(This space for Federal or State office use)

PERMIT NO. APPROVED APPROVAL DATE _____

AS AMENDED

APPROVED BY _____ TITLE _____ DATE _____

CONDITIONS OF APPROVAL, IF ANY

FEB 27 1981
James F. Sims
DISTRICT ENGINEER

M. J. Miller
Bassett Gas Unit

*See Instructions On Reverse Side

OIL CONSERVATION DIVISION

STATE OF NEW MEXICO
ENERGY AND MINERALS DEPARTMENT

P. O. BOX 2088
SANTA FE, NEW MEXICO 87501

Form C-107
Revised 10-1-78

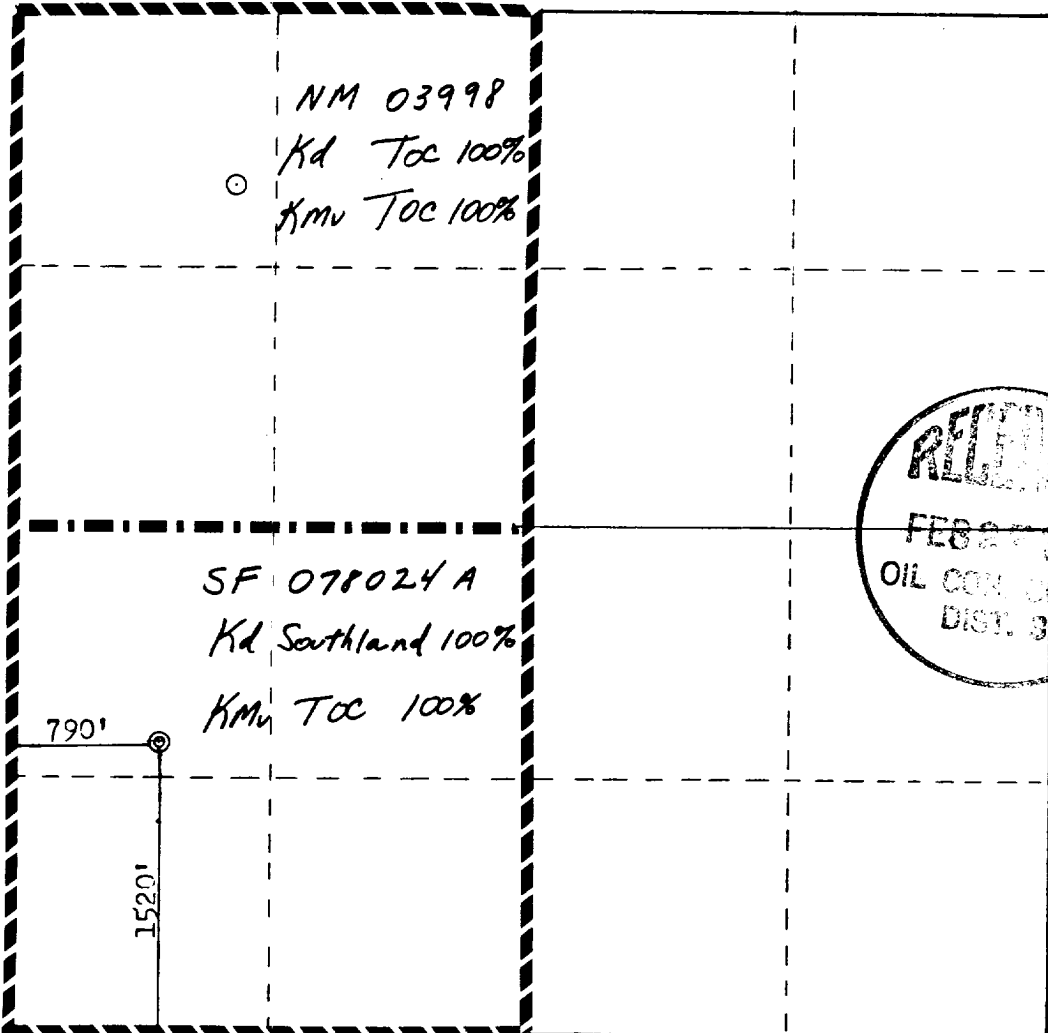
All distances must be from the outer boundaries of the Section.

Operator TENNECO OIL COMPANY		Lease BASSETT GAS UNIT			Well No. 1M
Unit Letter L	Section 33	Township 30N	Range 10W	County San Juan	
Actual Footage Location of Well: 1520 feet from the South line and 790 feet from the West line					
Ground Level Elev. 6029	Producing Formation MESAVERDE / DAKOTA		Pool BLANCO MESAVERDE / BASIN DAKOTA		Dedicated Acreage: 320 Acres

1. Outline the acreage dedicated to the subject well by colored pencil or hachure marks on the plat below.
2. If more than one lease is dedicated to the well, outline each and identify the ownership thereof (both as to working interest and royalty).
3. If more than one lease of different ownership is dedicated to the well, have the interests of all owners been consolidated by communitization, unitization, force-pooling, etc?
 Yes No If answer is "yes," type of consolidation _____

If answer is "no," list the owners and tract descriptions which have actually been consolidated. (Use reverse side of this form if necessary.) _____

No allowable will be assigned to the well until all interests have been consolidated (by communitization, unitization, forced-pooling, or otherwise) or until a non-standard unit, eliminating such interests, has been approved by the Commission.



Scale: 1"=1000'

CERTIFICATION

I hereby certify that the information contained herein is true and complete to the best of my knowledge and belief.

R. A. Mishler

Name
R. A. Mishler
Position
Sr. Production Analyst
Company
Tenneco Oil Company

Date
January 27, 1981

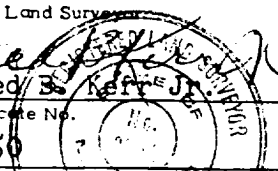
I hereby certify that the well location shown on this plat was plotted from field notes of actual surveys made by me or under my supervision, and that the same is true and correct to the best of my knowledge and belief.

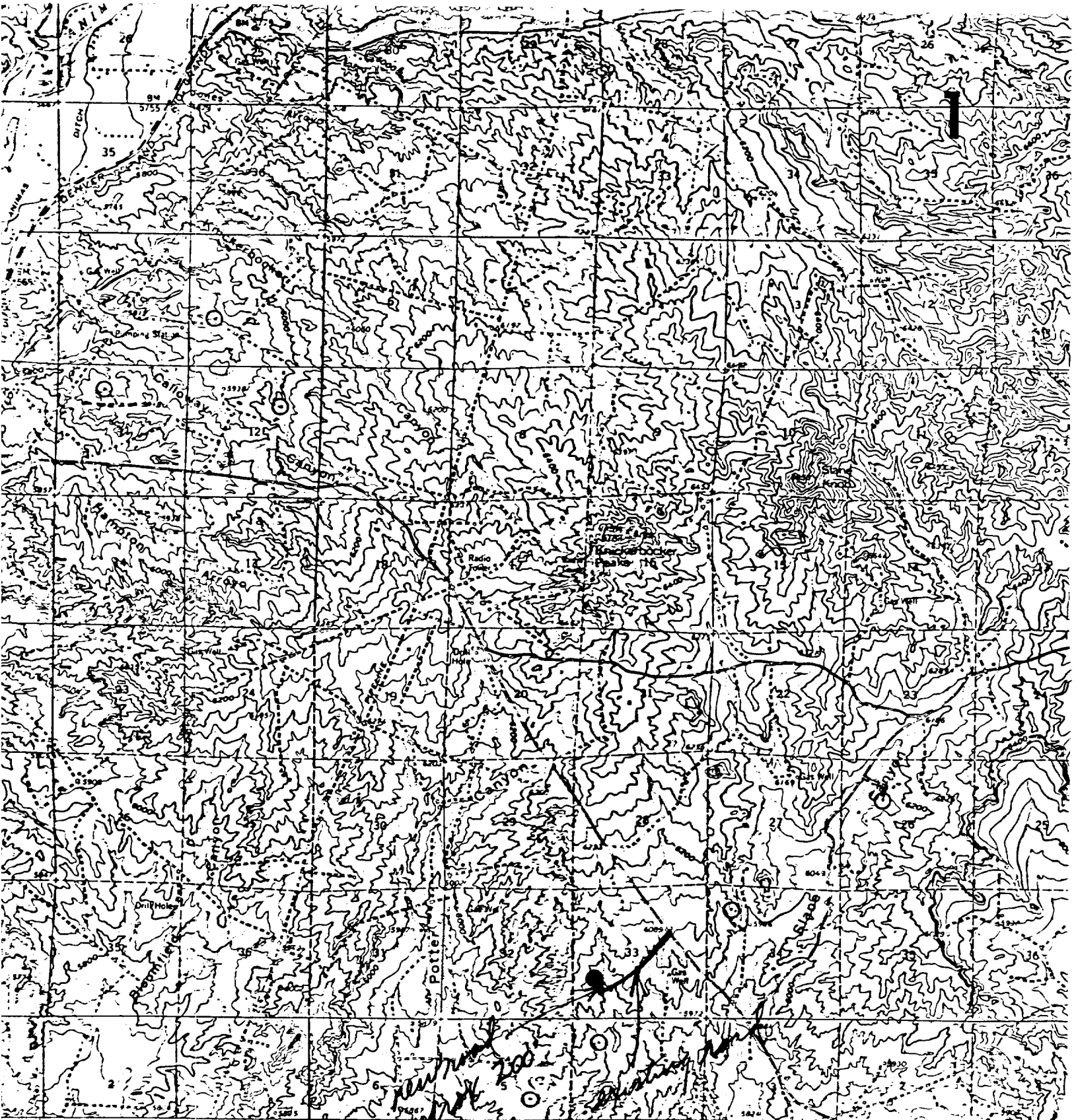
Date Surveyed
January 19, 1981

Registered Professional Engineer and Land Surveyor

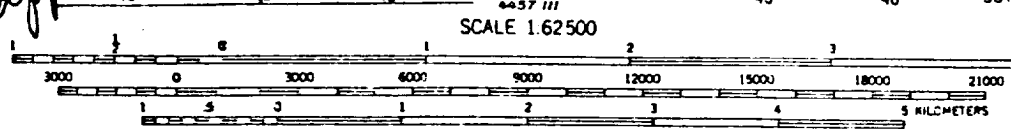
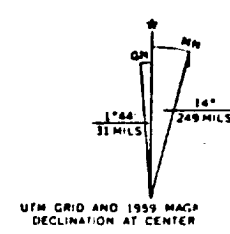
Fred B. Merritt Jr.

Certificate No.
3950





by the Geological Survey
 Methods from aerial
 dated 1959
 American datum
 to coordinate system.
 Indicator grid ticks,
 and mark buildings are shown
 N Rs 9 and 10W



CONTOUR INTERVAL 40 FEET
 DATUM'S MEAN SEA LEVEL

Vicinity Map for
TENNECO OIL COMPANY #1M BASSETT GAS UNIT
 1520' FSL 790' FWL Sec. 33-T30N-R10W
 SAN JUAN COUNTY, NEW MEXICO

ACY STANDARDS
 80225 OR WASHINGTON, D. C. 2024
 S IS AVAILABLE ON REQUEST