

UNITED STATES
DEPARTMENT OF THE INTERIOR
GEOLOGICAL SURVEY

APPLICATION FOR PERMIT TO DRILL, DEEPEN, OR PLUG BACK

1a. TYPE OF WORK

DRILL ☒DEEPEN ☐PLUG BACK ☐

b. TYPE OF WELL

OIL
WELL ☐GAS
WELL ☒OTHER ☐

2. NAME OF OPERATOR

SUPRON ENERGY CORPORATION

3. ADDRESS OF OPERATOR

P.O. Box 808, Farmington, New Mexico 87401

4. LOCATION OF WELL (Report location clearly and in accordance with any State requirements.)*

At surface

P 960' f/South line and 830' f/East line

At proposed prod. zone

Same as above

14. DISTANCE IN MILES AND DIRECTION FROM NEAREST TOWN OR POST OFFICE*

3 miles northeast of Farmington, New Mexico

15. DISTANCE FROM PROPOSED*

LOCATION TO NEAREST 830 ft.

PROPERTY OR LEASE LINE, FT. 830 ft.

(Also to nearest drlg. unit line, if any)

18. DISTANCE FROM PROPOSED LOCATION*

TO NEAREST WELL, DRILLING, COMPLETED,

OR APPLIED FOR, ON THIS LEASE, FT. 1480 ft.

16. NO. OF ACRES IN LEASE

2480.00

19. PROPOSED DEPTH

6670 ft.

17. NO. OF ACRES ASSIGNED
TO THIS WELLE $\frac{1}{2}$ 320.00

20. ROTARY OR CABLE TOOLS

Rotary

21. ELEVATIONS (Show whether DF, RT, GR, etc.)

5820 G.L.

22. APPROX. DATE WORK WILL START*

June 1, 1981

23.

PROPOSED CASING AND CEMENTING PROGRAM

SIZE OF HOLE	SIZE OF CASING	WEIGHT PER FOOT	SETTING DEPTH	QUANTITY OF CEMENT
12-1/4"	8-5/8"	24.00	250 ft.	150 sx circulated
7-7/8"	4-1/2"	10.50	6670 ft.	1050 sx

We desire to drill 12 $\frac{1}{4}$ " surface hole to approximately 250 ft. using natural mud as a circulating medium. Run new 8-5/8" casing and cement. Cement to be circulated to surface. Test casing. Drill 7-7/8" hole out from under surface using a starch base drilling mud to approximately 6670 ft. Log the well. Run new 4 $\frac{1}{2}$ ", 10.5# casing with a D.V. tool at approximately 4650 ft. and 1925 ft. Cement as follows: 1st stage approximately 350 sx of 50-50 POZ. 2nd stage approximately 400 sx of 50-50 POZ followed by 50 sx of class "B". 3rd stage approximately 150 sx of 65-35 POZ followed by 100 sx of 50-50 POZ to cover the Ojo Alamo zone. Pressure test the casing. Perforate and fracture the Dakota zone. Clean the well up. Run tubing to the Dakota zone. Nipple down the wellhead and test the well.

This gas has previously been dedicated to a transporter.

IN ABOVE SPACE DESCRIBE PROPOSED PROGRAM: If proposal is to deepen or plug back, give data on present productive zone and proposed new productive zone. If proposal is to drill or deepen directionally, give pertinent data on subsurface locations and measured and true vertical depths. Give blowout preventer program, if any.

24.

SIGNED

Rudy D. Motto

TITLE Area Superintendent

DATE April 6, 1981

(This space for Federal or State office use)

PERMIT NO.

APPROVAL DATE

APPROVED BY

TITLE

CONDITIONS OF APPROVAL, IF ANY:

APPROVED
AS AMENDEDAPR 20 1981
James F. Sims
JAMES F. SIMS
DISTRICT ENGINEER

All distances must be from the outer boundaries of the Section.

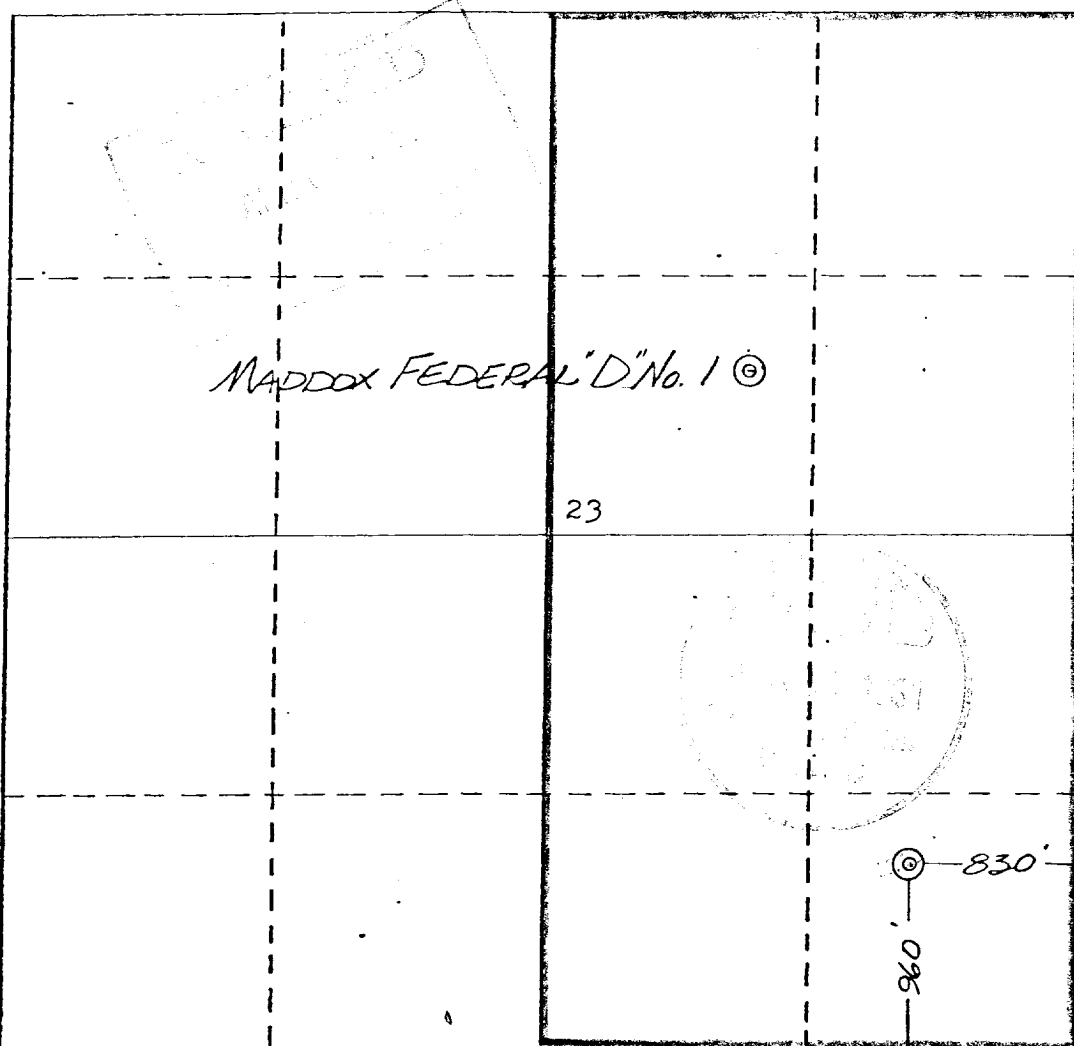
Operator SUPRON ENERGY CORPORATION			Lease MADDOX FEDERAL "D"		Well No. 1E
Unit Letter P	Section 23	Township 30 NORTH	Range 13 WEST	County SAN JUAN	
Actual Footage Location of Well:					
960 feet from the		SOUTH	line and	830 feet from the	EAST
Ground Level Elev. 5820	Producing Formation Dakota		Pool Basin	Dedicated Acreage: 1/2 320.00 Acres	

1. Outline the acreage dedicated to the subject well by colored pencil or hatchure marks on the plat below.
2. If more than one lease is dedicated to the well, outline each and identify the ownership thereof (both as to working interest and royalty).
3. If more than one lease of different ownership is dedicated to the well, have the interests of all owners been consolidated by communitization, unitization, force-pooling, etc?

☐ Yes ☐ No If answer is "yes," type of consolidation _____

If answer is "no," list the owners and tract descriptions which have actually been consolidated. (Use reverse side of this form if necessary.) _____

No allowable will be assigned to the well until all interests have been consolidated (by communitization, unitization, forced-pooling, or otherwise) or until a non-standard unit, eliminating such interests, has been approved by the Division



CERTIFICATION

I hereby certify that the information contained herein is true and complete to the best of my knowledge and belief.

Rudy D. Motto
Name

Rudy D. Motto

Position

Area Superintendent

Company

SUPRON ENERGY CORPORATION

Date

April 7, 1981

MICHAEL DALY
REGISTERED PROFESSIONAL ENGINEER
LAND SURVEYOR
5992
I hereby certify that the well location shown on this plat was plotted from field notes of actual survey made by me or under my supervision, and that the same is true and correct to the best of my knowledge and belief.

Date Surveyed

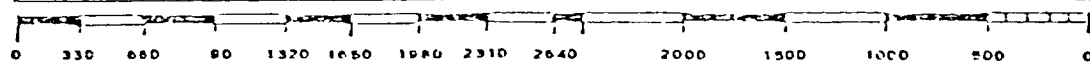
March 18, 1981

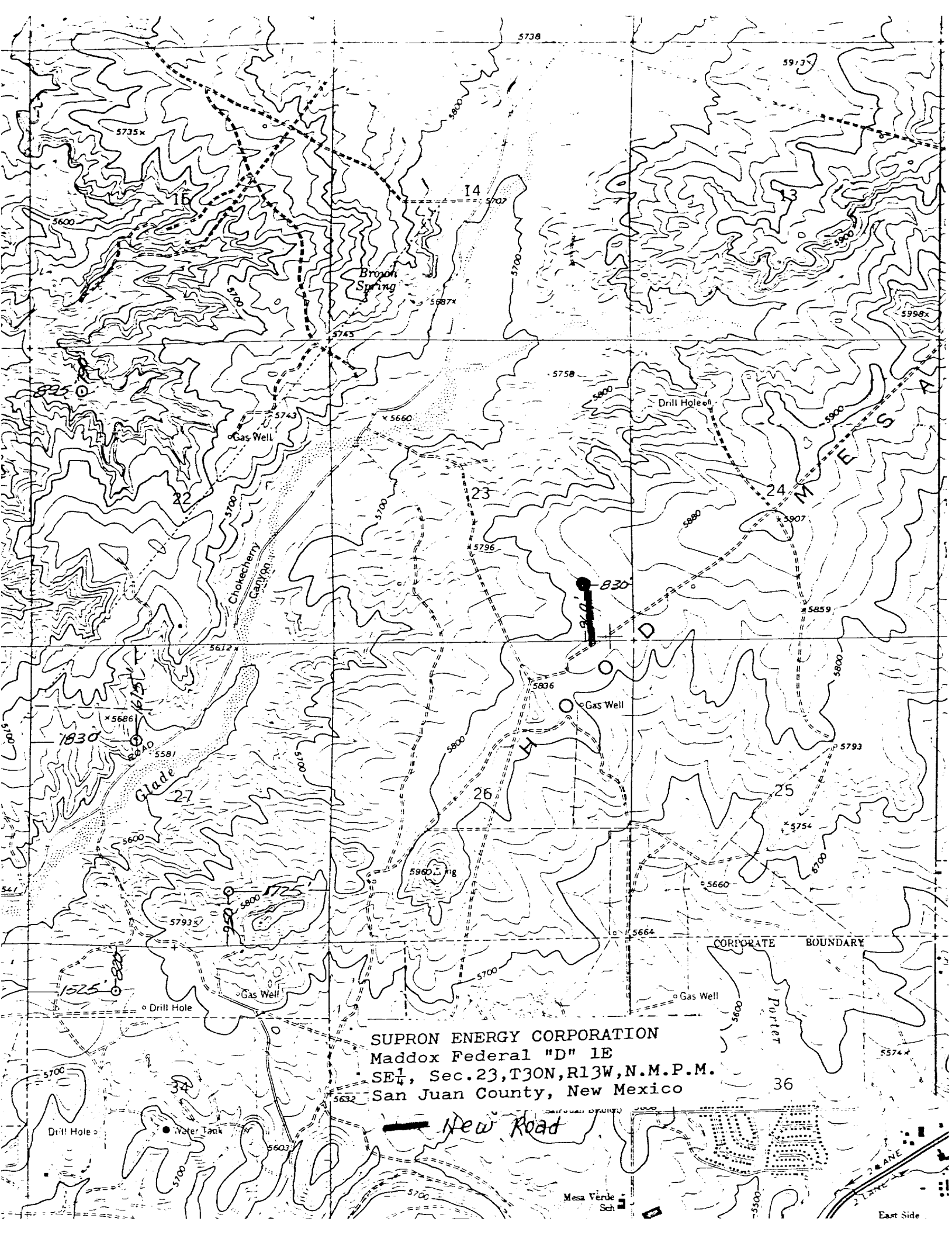
Registered Professional Engineer and/or Land Surveyor

Michael Daly
Michael Daly

Certificate No.

5992





SUPRON ENERGY CORPORATION
Maddox Federal "D" 1E
SE $\frac{1}{4}$, Sec. 23, T30N, R13W, N.M.P.M.
San Juan County, New Mexico

New Road

CORPORATE BOUNDARY

36

Mesa Verde Sch

East Side