

UNITED STATES
DEPARTMENT OF THE INTERIOR
GEOLOGICAL SURVEY

30-045-25023

APPLICATION FOR PERMIT TO DRILL, DEEPEN, OR PLUG BACK

1a. TYPE OF WORK

DRILL ☒DEEPEN ☐PLUG BACK ☐

b. TYPE OF WELL

OIL
WELL ☐GAS
WELL ☒

OTHER

SINGLE
ZONE ☒MULTIPLE
ZONE ☐

2. NAME OF OPERATOR

Supron Energy Corporation

3. ADDRESS OF OPERATOR

P.O. Box 808, Farmington, New Mexico 87401

4. LOCATION OF WELL (Report location clearly and in accordance with any State requirements.)

At surface

820 Ft./North; 1525 Ft./West line

At proposed prod. zone

Same as above

14. DISTANCE IN MILES AND DIRECTION FROM NEAREST TOWN OR POST OFFICE*

1-1/2 Miles North of Farmington, New Mexico

15. DISTANCE FROM PROPOSED*

820 Ft.

LOCATION TO NEAREST

PROPERTY OR LEASE LINE, FT.

(Also to nearest drlg. unit line, if any)

820 Ft.

18. DISTANCE FROM PROPOSED LOCATION*

TO NEAREST WELL, DRILLING, COMPLETED,

OR APPLIED FOR, ON THIS LEASE, FT.

2180 Ft.

16. NO. OF ACRES IN LEASE

2440.00

19. PROPOSED DEPTH

6425 Ft.

17. NO. OF ACRES ASSIGNED
TO THIS WELL

N/2 320.00

20. ROTARY OR CABLE TOOLS

Rotary

21. ELEVATIONS (Show whether DF, RT, GR, etc.)

5682 GL

DRILLING OPERATIONS AUTHORIZED ARE
SUBJECT TO COMPLIANCE WITH ATTACHED

"GENERAL REQUIREMENTS"

PROPOSED CASING AND CEMENTING PROGRAM

22. APPROX. DATE WORK WILL START*

May 4, 1981

23.

SIZE OF HOLE	SIZE OF CASING	WEIGHT PER FOOT	SETTING DEPTH
12-1/4"	8-5/8"	24.00	300 Ft.
7-7/8"	4-1/2"	10.50	6425 Ft.

This action is subject to administrative
appeal pursuant to 30 CFR 290. Ojo175 Sx. Circulated - Cover Alamo
950 Sx.

We desire to drill 12-1/4" surface hole using natural mud to approx. 300 ft. Run new 8-5/8", 24.00# csg. and cmt. with approx. 175 sx. of class "B" circulated to the surface. Test csg. Drill 7-7/8" hole using a starch base mud to approx. 6425 ft. Log the well. Run new 4-1/2", 10.50# csg. with a D.V. tool at approx. 4420 ft. Cement 1st stage with approx. 350 sx. of 50-50 poz. Cement the second stage with approx. 550 sx of 65-35 poz followed by 50 sx of class "B". Test casing. Perforate and fracture the Dakota zone. Clean the well up. Run tubing and set in the Dakota zone. Nipple down the wellhead. Test the well. Connect to a gathering system.

This gas has previously been dedicated to a transporter.

IN ABOVE SPACE DESCRIBE PROPOSED PROGRAM: If proposal is to deepen or plug back, give data on present productive zone and proposed new productive zone. If proposal is to drill or deepen directionally, give pertinent data on subsurface locations and measured and true vertical depths. Give blowout preventer program, if any.

24.

SIGNED

Rudy D. Motto

TITLE

Area Superintendent

DATE April 8, 1981

(This space for Federal or State office use)

PERMIT NO.

APPROVAL DATE

APPROVED BY

TITLE

CONDITIONS OF APPROVAL, IF ANY:

APPROVED
AS AMENDED

APR 22 1981

JAMES F. SIMS
DISTRICT ENGINEER

OIL CONSERVATION DIVISION

STATE OF NEW MEXICO
ENERGY AND MINERALS DEPARTMENTP. O. BOX 2088
SANTA FE, NEW MEXICO 87501Form C-102
Revised 10-1-7

All distances must be from the outer boundaries of the Section.

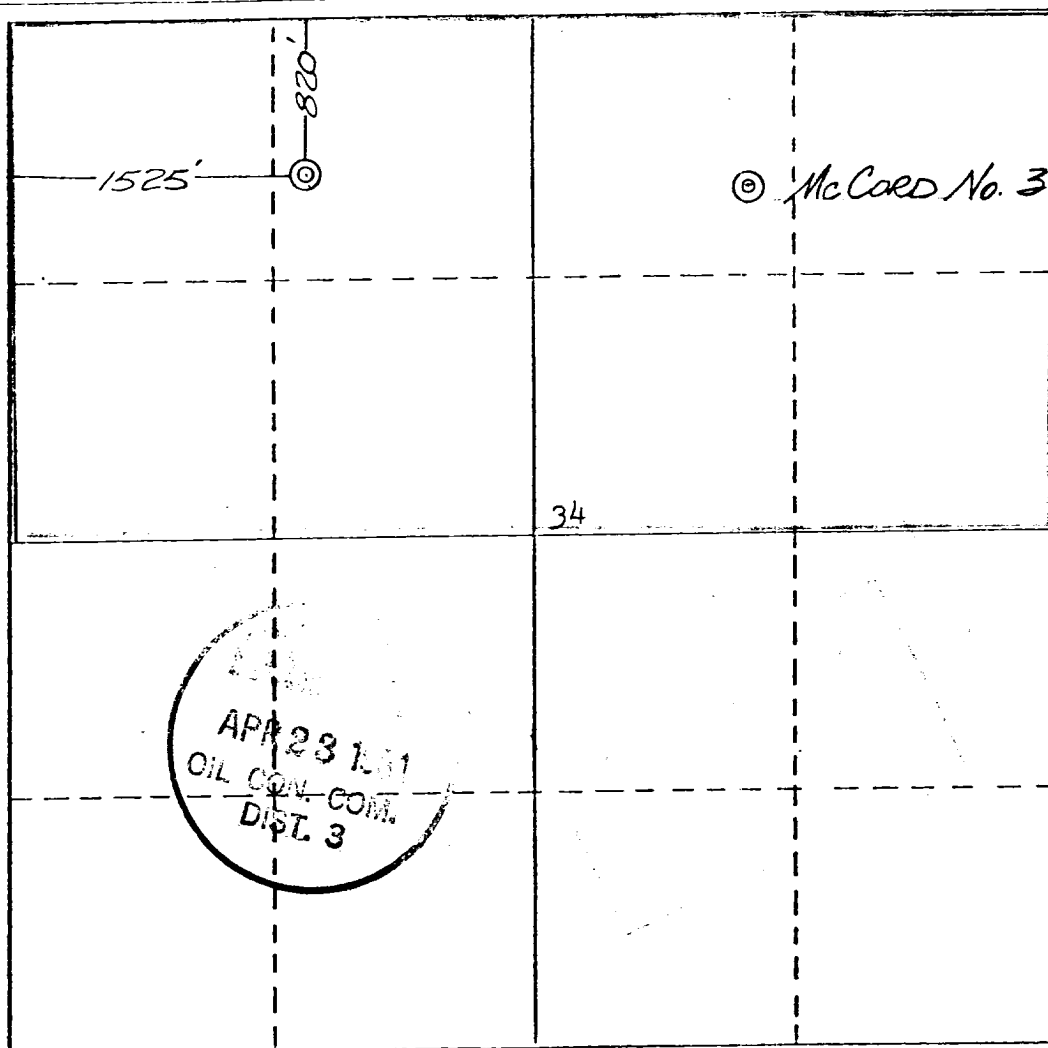
Operator SUPRON ENERGY CORPORATION			Lease MCCORD		Well No. 3E
Unit Letter C	Section 34	Township 30 NORTH	Range 13 WEST	County SAN JUAN	
Actual Footage Location of Well: 820 feet from the NORTH line and 1525 feet from the WEST line					
Ground Level Elev. 5682	Producing Formation DAKOTA		Pool BASIN	Dedicated Acreage: N/2 320.00 Acres	

1. Outline the acreage dedicated to the subject well by colored pencil or hachure marks on the plat below.
2. If more than one lease is dedicated to the well, outline each and identify the ownership thereof (both as to working interest and royalty).
3. If more than one lease of different ownership is dedicated to the well, have the interests of all owners been consolidated by communitization, unitization, force-pooling, etc?

☒ Yes ☐ No If answer is "yes," type of consolidation **Communitized**

If answer is "no," list the owners and tract descriptions which have actually been consolidated. (Use reverse side of this form if necessary.)

No allowable will be assigned to the well until all interests have been consolidated (by communitization, unitization, forced-pooling, or otherwise) or until a non-standard unit, eliminating such interests, has been approved by the Division.



CERTIFICATION

I hereby certify that the information contained herein is true and complete to the best of my knowledge and belief.

Name
Rudy D. Motto

Position
Area Superintendent

Company
Supron Energy Corporation

Date
April 6, 1981

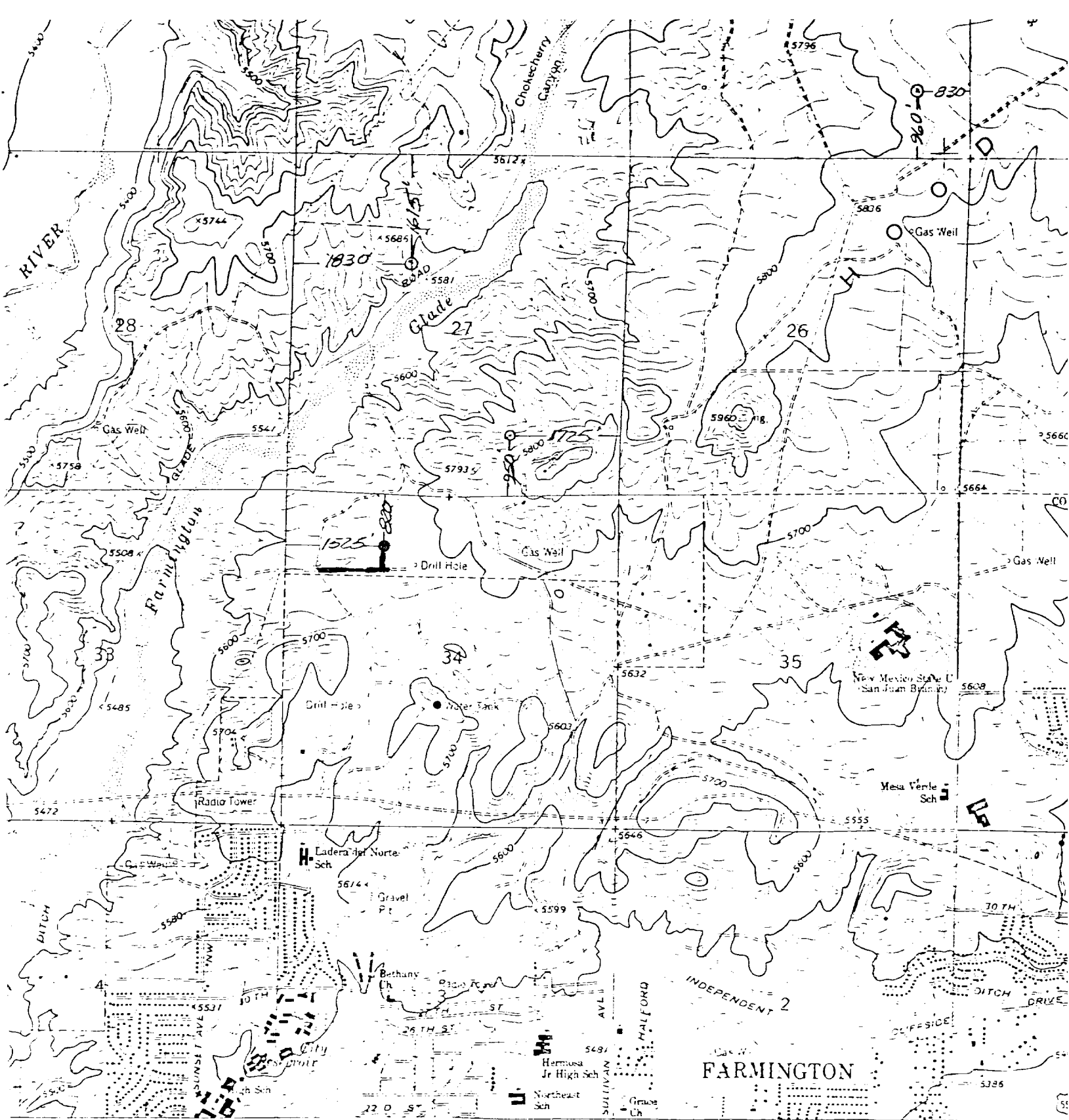
I hereby certify that the well location shown on this plat is plotted from field notes of actual surveys made by me or under my supervision, and that the same is true and correct to the best of my knowledge and belief.

Date Surveyed
March 18, 1981

Registered Professional Engineer and/or Land Surveyor

Michael Daly
Certificate No.
5992

0 330 660 990 1320 1650 1980 2310 2640 2970 3300 3630 3960 4290 4620 4950 5280 5610 5940 6270 6600



SUPRON ENERGY CORPORATION

McCord 3E

NW $\frac{1}{4}$, Sec. 34, T30N, R13W, N.M.P.M

San Juan County, New Mexico

1 MILE

5000 6000 7000 FEET

1 KILOMETER

Improved Road

New Road

CONTOUR INTERVAL 20 FEET

DOTTED LINES REPRESENT 10-FOOT CONTOURS

NATIONAL GEODETIC VERTICAL DATUM OF 1929

THIS MAP COMPLIES WITH NATIONAL MAP ACCURACY STANDARDS

NET NORTH
OF SHEET