

UNITED STATES
DEPARTMENT OF THE INTERIOR
GEOLOGICAL SURVEY

30-045-25206

APPLICATION FOR PERMIT TO DRILL, DEEPEN, OR PLUG BACK

1a. TYPE OF WORK

DRILL ☒DEEPEN ☐PLUG BACK ☐

b. TYPE OF WELL

OIL
WELL ☐GAS
WELL ☒

OTHER Infill

SINGLE
ZONE ☐MULTIPLE
ZONE ☒

2. NAME OF OPERATOR

Amoco Production Company

3. ADDRESS OF OPERATOR

501 Airport Dr., Farmington, N.M. 87401

4. LOCATION OF WELL (Report location clearly and in accordance with any State requirements.)

At surface 790' FNL X 790' FWL

At proposed prod. zone

Same

14. DISTANCE IN MILES AND DIRECTION FROM NEAREST TOWN OR POST OFFICE*

Approx. 4 miles north of Flora Vista, N.M.

15. DISTANCE FROM PROPOSED*

LOCATION TO NEAREST
PROPERTY OR LEASE LINE, FT.
(Also to nearest drlg. unit line, if any)

790'

18. DISTANCE FROM PROPOSED LOCATION*

TO NEAREST WELL, DRILLING, COMPLETED,
OR APPLIED FOR, ON THIS LEASE, FT.

2700'

21. ELEVATIONS (Show whether DF, RT, GR, etc.)

5798' G.L.

5. LEASE DESIGNATION AND SERIAL NO.

SF-081239

6. IF INDIAN, ALLOTTEE OR TRIBE NAME

7. UNIT AGREEMENT NAME

8. FARM OR LEASE NAME

Chrisman Gas Com

9. WELL NO.

1E

10. FIELD AND POOL, OR WILDCAT Flora
Basin Dakota/Vista Gallup11. SEC., T., R., M., OR BLK.
AND SURVEY OR AREA
NW/4, NW/4, Section 11,
T30N, R12W

12. COUNTY OR PARISH

San Juan

13. STATE

New Mexico

16. NO. OF ACRES IN LEASE

2402.59

17. NO. OF ACRES ASSIGNED
TO THIS WELL

W3207160

19. PROPOSED DEPTH

6975'

20. ROTARY OR CABLE TOOLS

Rotary

22. APPROX. DATE WORK WILL START*

As soon as permitted

23.

PROPOSED CASING AND CEMENTING PROGRAM

SIZE OF HOLE	SIZE OF CASING	WEIGHT PER FOOT	SETTING DEPTH	QUANTITY OF CEMENT
17-1/2"	13-3/8"	48#	300'	300 sx Class "B" x CaCl2-Circ.
12-1/4"	8-5/8"	24#	2400'	950 sx-cementing procedure below
7-7/8"	5-1/2"	17#	6975'	1075 sx-cementing procedure below

CEMENTING PROCEDURE

8-5/8" Int. Casing-850 sx of Class "B" with 50:50 POZ, 6% Gel, 2# Med. Tuf plug/sx and 0.8% FLA. Tail in with 100 sx Class "B" Neat-Circ.

5-1/2" Production Casing(1st Stage)
300 sx of Class "B" with 50:50 POZ, 6% Gel, 2# Med. Tuf plug/sx and 0.8% FLA. Tail in with 250 sx of Class "B" Neat.5-1/2" Production Casing(2nd Stage)
425 sx of Class "B" with 65:35 POZ, 6% Gel, 2# Med. Tuf plug/sx & 0.8% FLA. Tail in with 100 sx Class "B" Neat-Circ.

This application to drill an Infill Basin Dakota well is pursuant to Order No. R-1670-V approved by the NMOCC on May 22, 1979. This well will qualify under Section 103 of the Natural Gas Policy Act under Order No. R-1670-V. The gas from this is dedicated to El Paso Natural Gas Company (Dakota) Contract No. 56,742 and (Gallup) Contract No. 57,195. DV tool set at 3900.

IN ABOVE SPACE DESCRIBE PROPOSED PROGRAM: If proposal is to deepen or plug back, give data on present productive zone and proposed new productive zone. If proposal is to drill or deepen directionally, give pertinent data on subsurface locations and measured and true vertical depths. Give blowout preventer program, if any.

24.

SIGNED

TITLE District Engineer

DATE 9-10-81

(This space for Federal or State office use)

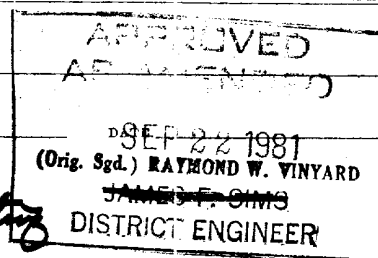
PERMIT NO.

APPROVAL DATE

APPROVED BY

TITLE

CONDITIONS OF APPROVAL, IF ANY:



*See Instructions On Reverse Side

NMOCC

OIL CONSERVATION DIVISION

P. O. BOX 2088

Form C-107
Revised 10-1-78STATE OF NEW MEXICO
ENERGY AND MINERALS DEPARTMENT

SANTA FE, NEW MEXICO 87501

All distances must be from the outer boundaries of the Section.

Operator AMOCO PRODUCTION COMPANY			Lease CHRISMAN GAS COM		Well No. 1E
Unit Letter D	Section 11	Township 30N	Range 12W	County San Juan	
Actual Footage Location of Well: 790 feet from the North line and 790 feet from the West line					
Ground Level Elev: 5798	Producing Formation Dakota/Gallup		Pool Basin Dakota/Flora Vista Gallup		Dedicated Acreage: 320/160 Acres

1. Outline the acreage dedicated to the subject well by colored pencil or hatchure marks on the plat below.
2. If more than one lease is dedicated to the well, outline each and identify the ownership thereof (both as to working interest and royalty).
3. If more than one lease of different ownership is dedicated to the well, have the interests of all owners been consolidated by communitization, unitization, force-pooling, etc?

☒ Yes ☐ No If answer is "yes," type of consolidation Communitization

If answer is "no," list the owners and tract descriptions which have actually been consolidated. (Use reverse side of this form if necessary.)

No allowable will be assigned to the well until all interests have been consolidated (by communitization, unitization, forced-pooling, or otherwise) or until a non-standard unit, eliminating such interests, has been approved by the Commission.

790'

790'

Gallup Dedication

Amoco WI: 100%

Sec.

11

Dakota Dedication

RECEIVED
SEP 11 1981
OIL CON. COM. DIST. 3

RECEIVED
SEP 24 1981
OIL CON. COM. DIST. 3

Scale: 1"=1000'

CERTIFICATION

I hereby certify that the information contained herein is true and complete to the best of my knowledge and belief.

Wayne L. Peterson
Name

W.L. PETERSON
Position

DISTRICT ENGINEER
Company

AMOCO PRODUCTION COMPANY
Date

September 11, 1981

I hereby certify that the well location shown on this plat was plotted from field notes of actual surveys made by me or under my supervision, and that the same is true and correct to the best of my knowledge and belief.

Date Surveyed **SEP 11 1981**
Registered Professional Engineer and Land Surveyor
Fred S. Kerr Jr.
Cert. No. **3950**

51760

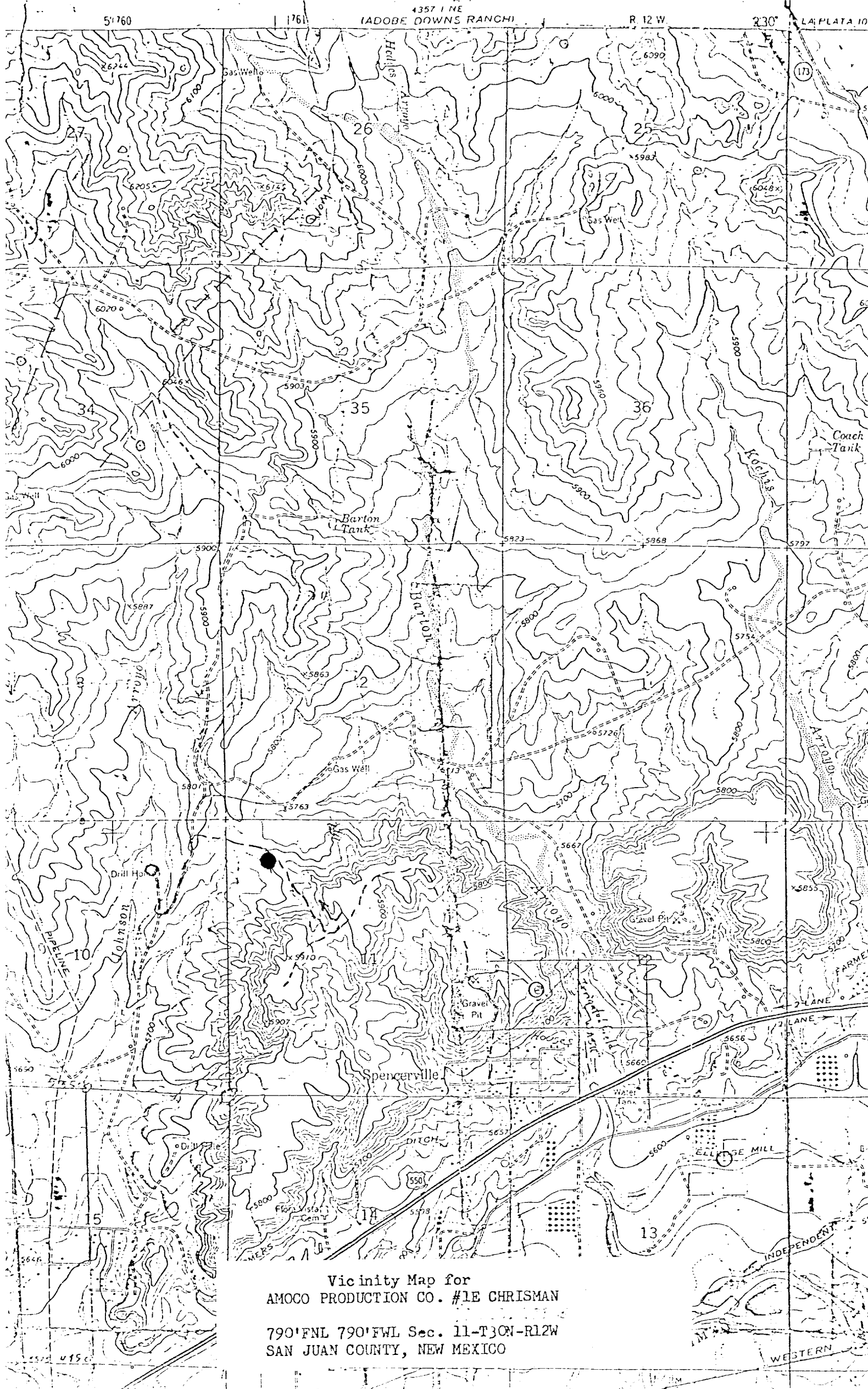
1761

4357 1 NE
IADOBÉ DOWNS RANCH

R 12 W

230°

LA PLATA 10



Vicinity Map for
AMOCO PRODUCTION CO. #1E CHRISMAN

790'FNL 790'FWL Sec. 11-T30N-R12W
SAN JUAN COUNTY, NEW MEXICO