

UNITED STATES  
DEPARTMENT OF THE INTERIOR  
GEOLOGICAL SURVEY

## APPLICATION FOR PERMIT TO DRILL, DEEPEN, OR PLUG BACK

## 1a. TYPE OF WORK

DRILL ☒DEEPEN ☐PLUG BACK ☐

## b. TYPE OF WELL

OIL  
WELL ☐GAS  
WELL ☒

OTHER

SINGLE  
ZONE ☐MULTIPLE  
ZONE ☐

## 2. NAME OF OPERATOR

JEROME P. McHUGH

## 3. ADDRESS OF OPERATOR

P. O. Box 208, Farmington, New Mexico 87400

## 4. LOCATION OF WELL (Report location clearly and in accordance with any State requirements.)

At surface

1560' FSL - 1850' FEL

At proposed prod. zone

## 14. DISTANCE IN MILES AND DIRECTION FROM NEAREST TOWN OR POST OFFICE\*

3 Miles NE of Flora Vista

## 15. DISTANCE FROM PROPOSED\*

LOCATION TO NEAREST  
PROPERTY OR LEASE LINE, FT.  
(Also to nearest drlg. unit line, if any)

240'

## 18. DISTANCE FROM PROPOSED LOCATION\*

TO NEAREST WELL, DRILLING, COMPLETED,  
OR APPLIED FOR, ON THIS LEASE, FT.

1/2mi.WNW

## 21. ELEVATIONS (Show whether DF, RT, GR, etc.)

5812' GL; RKB 5824'

## 23.

## PROPOSED CASING AND CEMENTING PROGRAM

SIZE OF HOLE	SIZE OF CASING	WEIGHT PER FOOT	SETTING DEPTH	QUANTITY OF CEMENT
12-1/4"	8-5/8"	23#	220'	159 cu.ft. to surface
7-7/8"	4-1/2"	11.6# & 10.5#	6650'	1900 cu.ft. to surface

Plan to drill with spud mud to set surface casing at approximately 220'. Will then drill with water-gel-mud mixture to test the Basin Dakota Formation. Plan to run IES and CDL logs and if the well appears productive, will run 4-1/2" casing, cementing in two stages. Will then selectively perforate, frac, clean-out after frac, and complete well using 2-3/8" tubing.

Gas Dedicated.

IN ABOVE SPACE DESCRIBE PROPOSED PROGRAM: If proposal is to deepen or plug back, give data on present productive zone and proposed new productive zone. If proposal is to drill or deepen directionally, give pertinent data on subsurface locations and measured and true vertical depths. Give blowout preventer program, if any.

24.

SIGNED

Jerry McHugh

TITLE

Agent

DATE

10-27-82

(This space for Federal or State office use)

PERMIT NO.

APPROVAL DATE

APPROVED BY

TITLE

CONDITIONS OF APPROVAL, IF ANY:

APPROVED  
AS AMENDED

DATE

NOV 26 1982

JAMES F. SIMS  
DISTRICT ENGINEER

## OIL CONSERVATION DIVISION

STATE OF NEW MEXICO  
ENERGY AND MINERALS DEPARTMENTP. O. BOX 2088  
SANTA FE, NEW MEXICO 87501Form C-102  
Revised 10-1-78

All distances must be from the outer boundaries of the Section.

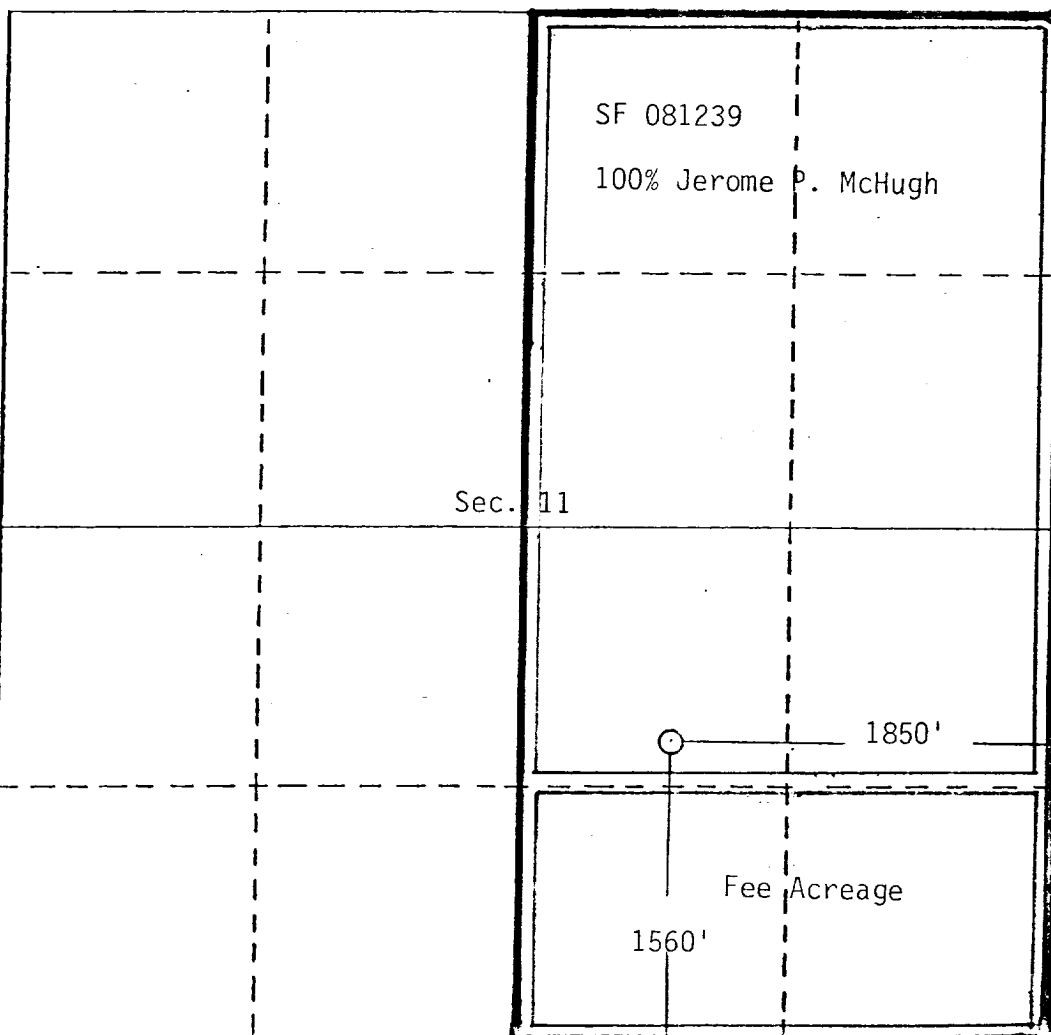
Operator Jerome P. McHugh			Lease Little Stinker		
Unit Letter J	Section 11	Township 30 North	Range 12 West	County San Juan	
Actual Footage Location of Well: 1560 feet from the South line and 1850 feet from the East line					
Ground Level Elev. 5812	Producing Formation Dakota		Pool Basin Dakota	Dedicated Acreage: E 320 Acres	

1. Outline the acreage dedicated to the subject well by colored pencil or hatchure marks on the plat below.
2. If more than one lease is dedicated to the well, outline each and identify the ownership thereof (both as to working interest and royalty).
3. If more than one lease of different ownership is dedicated to the well, have the interests of all owners been consolidated by communitization, unitization, force-pooling, etc?

☒ Yes ☐ No If answer is "yes," type of consolidation Communitization

If answer is "no," list the owners and tract descriptions which have actually been consolidated. (Use reverse side of this form if necessary.)

No allowable will be assigned to the well until all interests have been consolidated (by communitization, unitization, forced-pooling, or otherwise) or until a non-standard unit, eliminating such interests, has been approved by the Division.



## CERTIFICATION

I hereby certify that the information contained herein is true and complete to the best of my knowledge and belief.

*Jerry McHugh*  
Name  
Jerry McHugh

Position  
Landman

Company  
Jerome P. McHugh

Date  
10-27-82

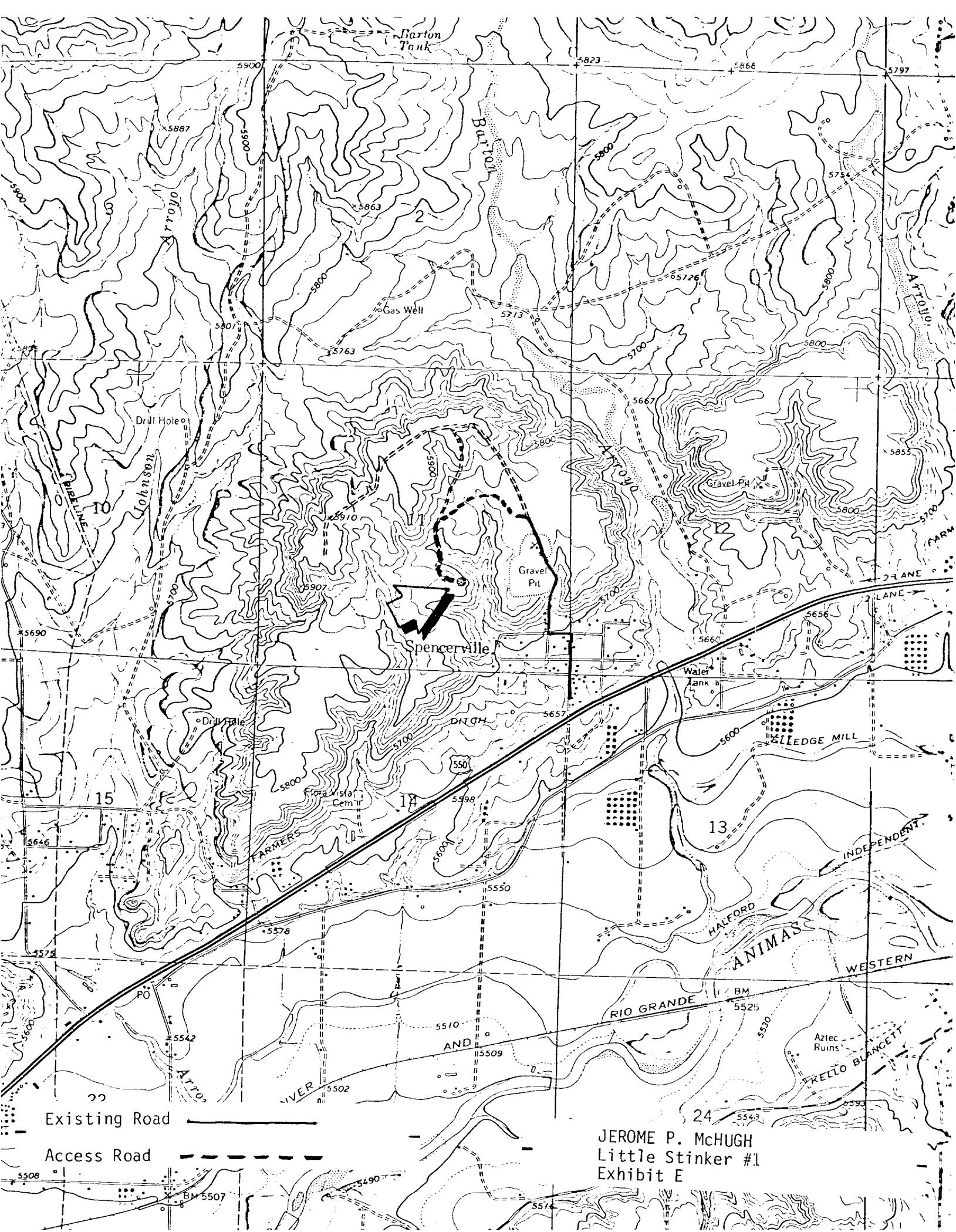
I hereby certify that the well location shown on this plat was plotted from field notes of actual surveys made by me or under my supervision, and that the same is true and correct to the best of my knowledge and belief.

Date Surveyed

Registered Professional Engineer  
and/or Land Surveyor

*Thomas A. Dugan*  
Certificate No. 2373

Thomas A. Dugan, P.E./L.S.



Barton  
Park

Arroyo  
Barton

Arroyo  
Johnson

Spencer

Gravel  
Pit

Water  
Tank

LEDGE MILL

HALFORD  
ANIMAS

RIO GRANDE

Aztec  
Ruins

PELLO BLANCETT

Existing Road

Access Road

JEROME P. McHUGH  
Little Stinker #1  
Exhibit E