

30-045-25552

UNITED STATES  
DEPARTMENT OF THE INTERIOR  
GEOLOGICAL SURVEY

APPLICATION FOR PERMIT TO DRILL, DEEPEN, OR PLUG BACK

1a. TYPE OF WORK  
DRILL ☒ DEEPEN ☐ PLUG BACK ☐

b. TYPE OF WELL  
OIL WELL ☐ GAS WELL ☒ OTHER ☐ SINGLE ZONE ☒ MULTIPLE ZONE ☐

2. NAME OF OPERATOR  
Tenneco Oil Company

3. ADDRESS OF OPERATOR  
Box 3249, Englewood, CO 80155

4. LOCATION OF WELL (Report location clearly and in accordance with any State requirements.)  
At surface 1368' FNL, 1900' FEL

At proposed prod. zone  
Same

14. DISTANCE IN MILES AND DIRECTION FROM NEAREST TOWN OR POST OFFICE\*  
12 miles East of Aztec, New Mexico

16. DISTANCE FROM PROPOSED\*  
LOCATION TO NEAREST  
PROPERTY OR LEASE LINE, FT.  
(Also to nearest drilg. unit line, if any) 1368'

18. DISTANCE FROM PROPOSED LOCATION\*  
TO NEAREST WELL, DRILLING, COMPLETED,  
OR APPLIED FOR, ON THIS LEASE, FT.

21. ELEVATIONS (Show whether DF, ET, GR, etc.)

5934' GR

23. PROPOSED CASING AND CEMENTING PROGRAM

SIZE OF HOLE	SIZE OF CASING	WEIGHT PER FOOT	SETTING DEPTH	QUANTITY OF CEMENT
12-1/4"	9-5/8"	36#	± 260'	Circ to surface
7-7/8"	4-1/2"	10.5#	±2660	Circ to surface

See attached drilling procedure

Gas is dedicated

Approval for Unorthodox Location received from State of New Mexico 11/24/82

DRILLING OPERATIONS AUTHORIZED ARE  
SUBJECT TO COMPLIANCE WITH ATTACHED  
"GENERAL REQUIREMENTS"

This action is subject to administrative  
appeal pursuant to 30 CFR 290.

IN ABOVE SPACE DESCRIBE PROPOSED PROGRAM: If proposal is to deepen or plug back, give data on present productive zone and proposed new productive zone. If proposal is to drill or deepen directionally, give pertinent data on subsurface locations and measured and true vertical depths. Give blowout preventer program, if any.

24. SIGNED Ken Russell TITLE Sr. Production Analyst DATE Dec. 14, 1982  
(This space for Federal or State office use)

PERMIT NO. \_\_\_\_\_

APPROVAL DATE \_\_\_\_\_

APPROVED BY \_\_\_\_\_  
CONDITIONS OF APPROVAL, IF ANY:

TITLE \_\_\_\_\_

DATE

APPROVED  
AS AMENDED  
JAN 12 1983  
JAMES F. SIMS  
DISTRICT ENGINEER

MMOCC

## OIL CONSERVATION DIVISION

P. O. BOX 2088

SANTA FE, NEW MEXICO 87501

Form C-107  
Revised 10-1-78

STATE OF NEW MEXICO

ENERGY AND MINERALS DEPARTMENT

All distances must be from the outer boundaries of the Section.

Operator <b>TENNECO OIL COMPANY</b>		Lease <del>BOLACK</del> <i>Riddle</i>		Well No. <i>345</i>
Unit Letter <b>G</b>	Section <b>21</b>	Township <b>30N</b>	Range <b>9W</b>	County <b>San Juan</b>
Actual Footage Location of Well: <b>1368</b> feet from the <b>North</b> line and <b>1900</b> feet from the <b>East</b> line				
Ground Level Elev: <b>5934</b>	Producing Formation <b>Fruitland</b>	Pool <b>Blanco Fruitland</b>	Dedicated Acreage: <b>160</b> Acres	

1. Outline the acreage dedicated to the subject well by colored pencil or hachure marks on the plat below.
2. If more than one lease is dedicated to the well, outline each and identify the ownership thereof (both as to working interest and royalty).
3. If more than one lease of different ownership is dedicated to the well, have the interests of all owners been consolidated by communitization, unitization, force-pooling, etc?

☐ Yes ☐ No If answer is "yes," type of consolidation \_\_\_\_\_

If answer is "no," list the owners and tract descriptions which have actually been consolidated. (Use reverse side of this form if necessary.) \_\_\_\_\_

No allowable will be assigned to the well until all interests have been consolidated (by communitization, unitization, forced-pooling, or otherwise) or until a non-standard unit, eliminating such interests, has been approved by the Commission.


## CERTIFICATION

I hereby certify that the information contained herein is true and complete to the best of my knowledge and belief.

Name  
**Ken Russell**

Position  
**Sr. Production Analyst**

Company  
**Tenneco Oil Co.**

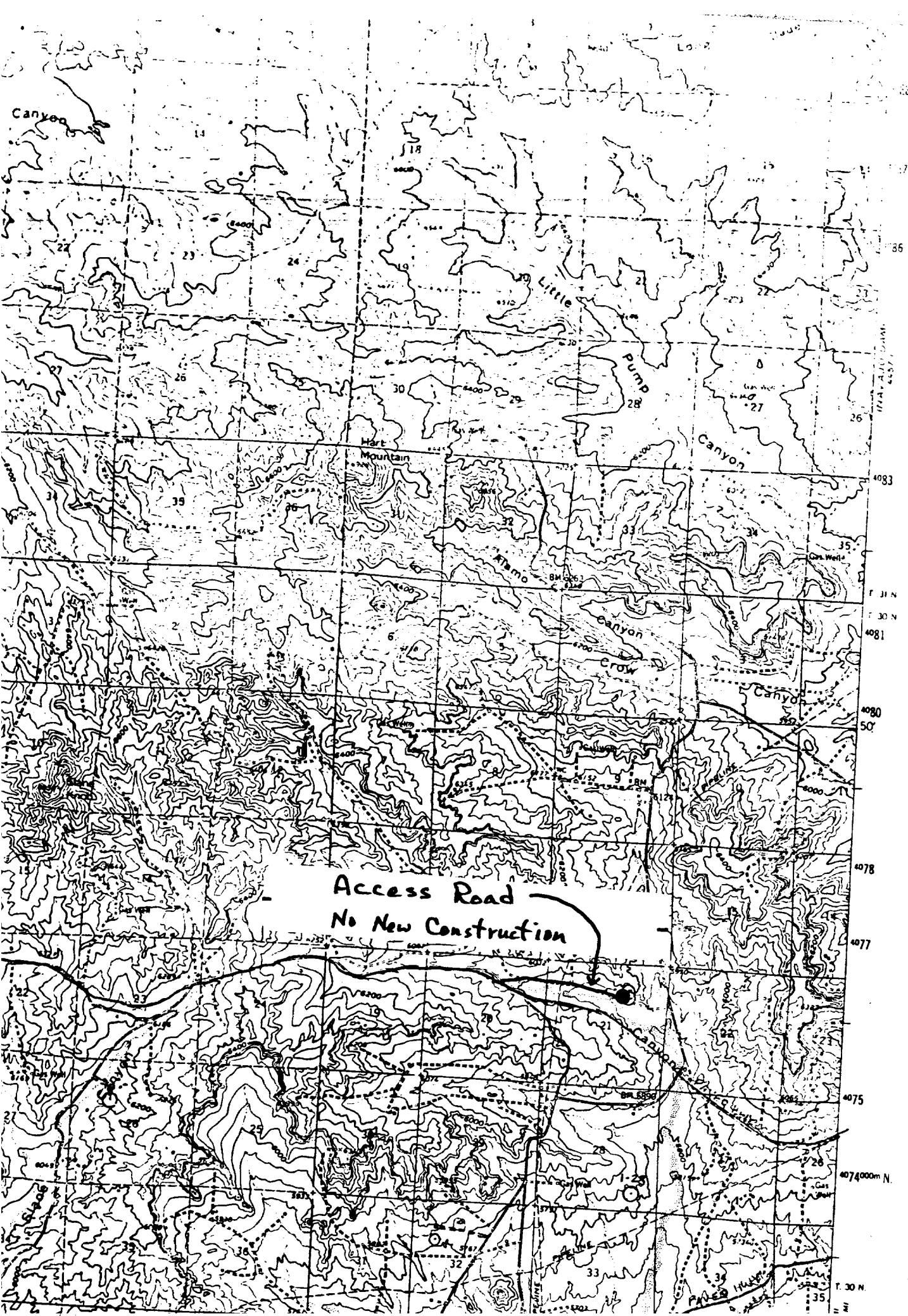
Date  
**November 1, 1982**

I hereby certify that the well location shown on this plat was plotted from field notes of actual surveys made by me or under my supervision, and that the same is true and correct to the best of my knowledge and belief.

Date Surveyed  
**September 9, 1982**

Registered Professional Engineer and Land Surveyor  
*Fred B. Kerr Jr.*  
**Fred B. Kerr Jr.**

Certificate No. \_\_\_\_\_





STATE OF NEW MEXICO  
ENERGY AND MINERALS DEPARTMENT  
OIL CONSERVATION DIVISION

BRUCE KING  
GOVERNOR

LARRY KEHOE  
SECRETARY

November 24, 1982

POST OFFICE BOX 2088  
STATE LAND OFFICE BUILDING  
SANTA FE, NEW MEXICO 87501  
(505) 827-2434

Tenneco Oil Exploration  
and Production  
P. O. Box 3249  
Englewood, Colorado 80155

Attention: Ken Russell

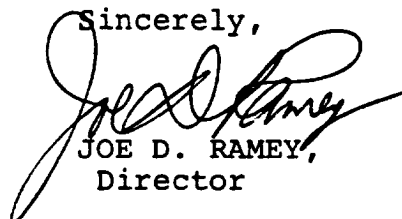
Administrative Order NSL-1619

Gentlemen:

Reference is made to your application for a non-standard location for your Bolack Well No. 3 to be located 1368 feet from the North line and 1900 feet from the East line of Section 21, Township 30 North, Range 9 West, NMPM, Blanco Fruitland Pool, San Juan County, New Mexico.

By authority granted me under the provisions of Rule 104 F of the Division Rules and Regulations, the above-described unorthodox location is hereby approved.

Sincerely,



JOE D. RAMEY,  
Director

JDR/RLS/dr

cc: Oil Conservation Division - Aztec  
Oil & Gas Engineering Committee - Hobbs  
Minerals Management Service - Farmington

RECEIVED  
NOV 24 1982  
OIL CON. DIV.  
DIST. 3