

STATE OF NEW MEXICO
ENERGY AND MINERALS DEPARTMENT

OIL CONSERVATION DIVISION

P. O. BOX 2088

SANTA FE, NEW MEXICO 87501

nick us

Form C-102
Revised 10-1-78

All distances must be from the outer boundaries of the Section.

Operator BLACKWOOD & NICHOLS CO., LTD.		Lease NORTHEAST BLANCO UNIT		Well No. 212
Unit Letter 0	Section 01	Township 31N	Range 7W, NMPM	County San Juan

Actual Footage Location of Well:				
1030	feet from the	South	line and	1650
			feet from the	East
Ground Level Elev. 6518' UG	Producing Formation Fruitland Coal	Pool Basin Fruitland Coal Gas	Dedicated Acreage: 181.4	Acres

1. Outline the acreage dedicated to the subject well by colored pencil or hatchure marks on the plat below.
2. If more than one lease is dedicated to the well, outline each and identify the ownership thereof (both as to working interest and royalty).
3. If more than one lease of different ownership is dedicated to the well, have the interests of all owners been consolidated by communitization, unitization, force-pooling, etc?

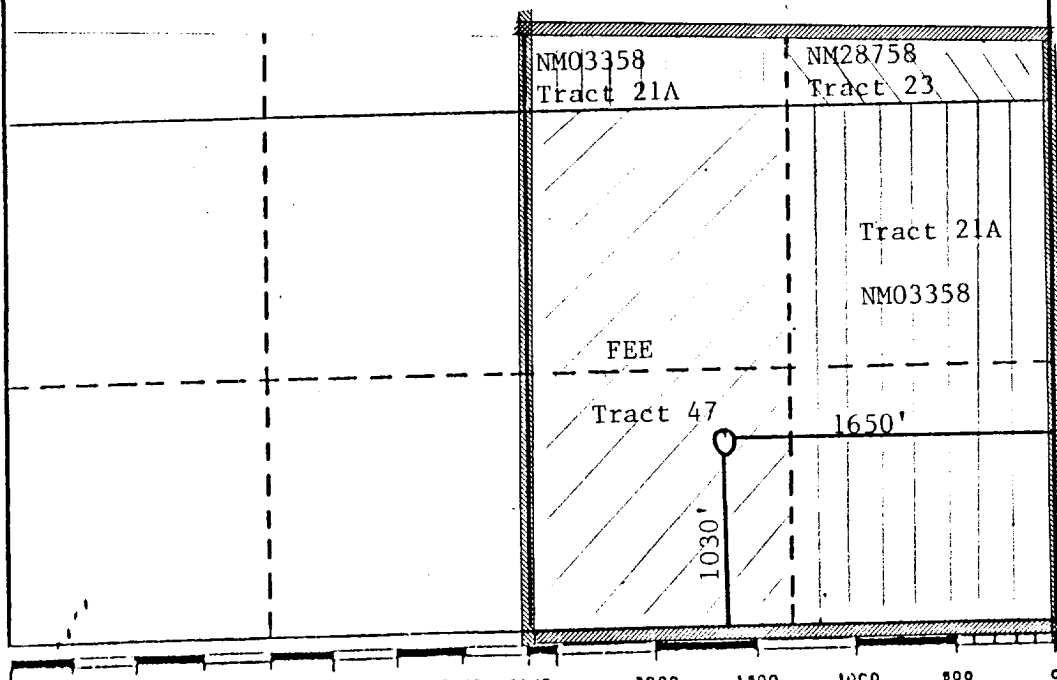
☒ Yes ☐ No If answer is "yes," type of consolidation Unitization

If answer is "no," list the owners and tract descriptions which have actually been consolidated. (Use reverse side of this form if necessary.)

No allowable will be assigned to the well until all interests have been consolidated (by communitization, unitization, forced-pooling, or otherwise) or until a non-standard unit, eliminating such interests, has been approved by the Division.

NOTE: The footage from the South line had to be revised to avoid an archaeological site.

RECEIVED
DEC 21 1988
OIL CON. DIV
DIST. 3



CERTIFICATION

I hereby certify that the information contained herein is true and complete to the best of my knowledge and belief.

William F. Clark

Name
William F. Clark
Position
Operations Manager
Company
Blackwood & Nichols Co., Ltd.

Date
December 21, 1988

I hereby certify that the well location shown on this plat was plotted from field notes of actual surveys made by me or under my supervision, and that the same is true and correct to the best of my knowledge and belief.

Date Surveyed
April 9, 1985
Registered Professional Engineer
and/or Land Surveyor

Allison L. Kroeger

Certificate No.
7922