

OIL CONSERVATION DIVISION

STATE OF NEW MEXICO
ENERGY AND MINERALS DEPARTMENTP. O. BOX 2088
SANTA FE, NEW MEXICO 87501Form C-102
Revised 10-1-78

All distances must be from the outer boundaries of the Section.

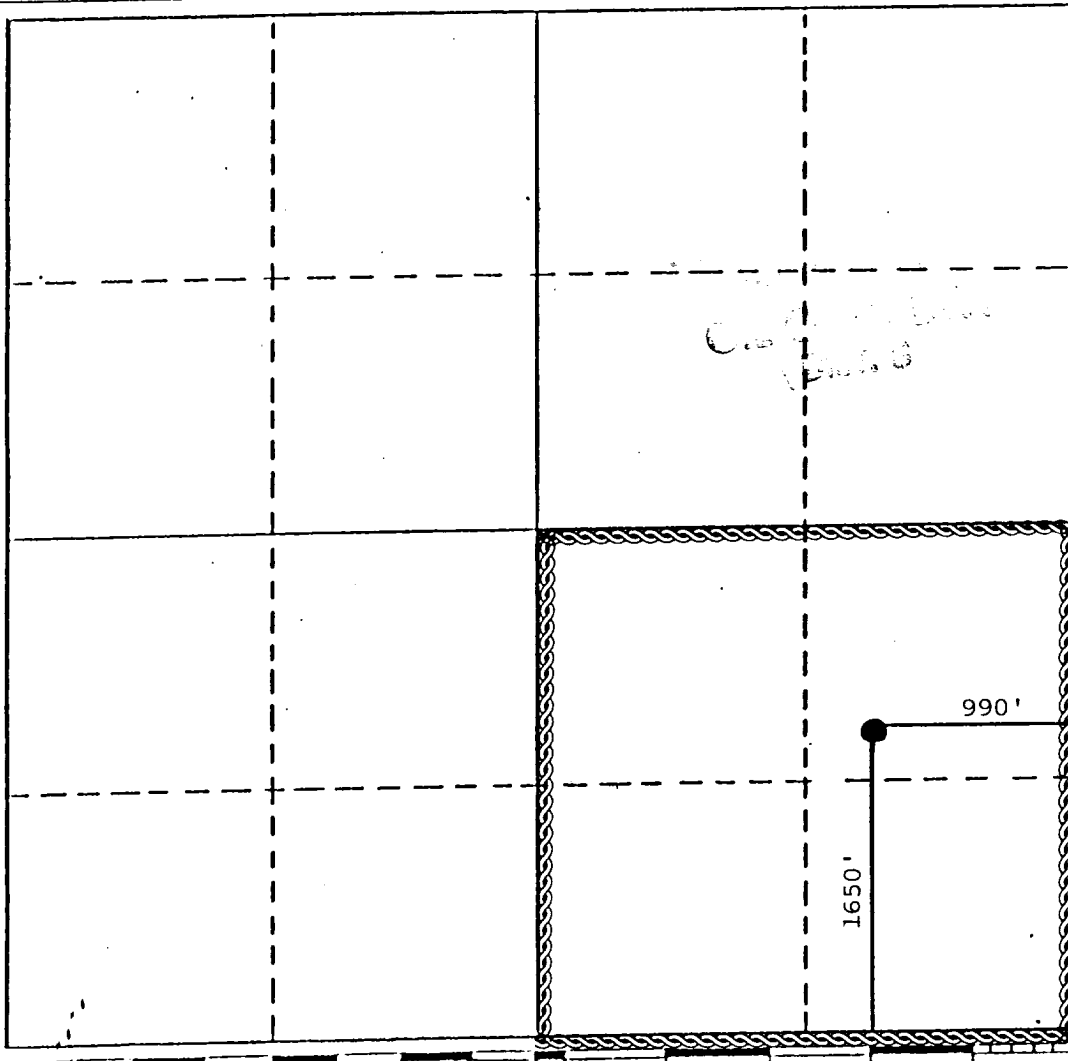
Operator BLACKWOOD & NICHOLS CO., LTD.			Lease NORTHEAST BLANCO UNIT		Well No. 216
Unit Letter I	Section 27	Township 31N	Range 7W, NMPM	County San Juan	
Actual Footage Location of Well:					
1650 feet from the South line and		990 feet from the East line			
Ground Level Elev. 6375 (U.G.)	Producing Formation Pictured Cliffs	Pool South Los Pinos Fruitland Sand-Pictured Cliffs		Dedicated Acreage: 160	Acre

1. Outline the acreage dedicated to the subject well by colored pencil or hatchure marks on the plat below.
2. If more than one lease is dedicated to the well, outline each and identify the ownership thereof (both as to working interest and royalty).
3. If more than one lease of different ownership is dedicated to the well, have the interests of all owners been consolidated by communitization, unitization, force-pooling, etc?

☒ Yes ☐ No If answer is "yes," type of consolidation Unitization

If answer is "no," list the owners and tract descriptions which have actually been consolidated. (Use reverse side of this form if necessary.) _____

No allowable will be assigned to the well until all interests have been consolidated (by communitization, unitization, forced-pooling, or otherwise) or until a non-standard unit, eliminating such interests, has been approved by the Division.



CERTIFICATION

I hereby certify that the information contained herein is true and complete to the best of my knowledge and belief.

William F. Clark

Name

William F. Clark

Position

Operations Manager

Company

Blackwood & Nichols Co., Ltd.

Date

January 16, 1989

I hereby certify that the well location shown on this plat was plotted from field notes of actual surveys made by me or under my supervision, and that the same is true and correct to the best of my knowledge and belief.

Date Surveyed

April 8, 1985

Registered Professional Engineer
and/or Land Surveyor

Allison L. Kroeger

Certificate No.

7922