

All distances must be from the outer boundaries of the Section.

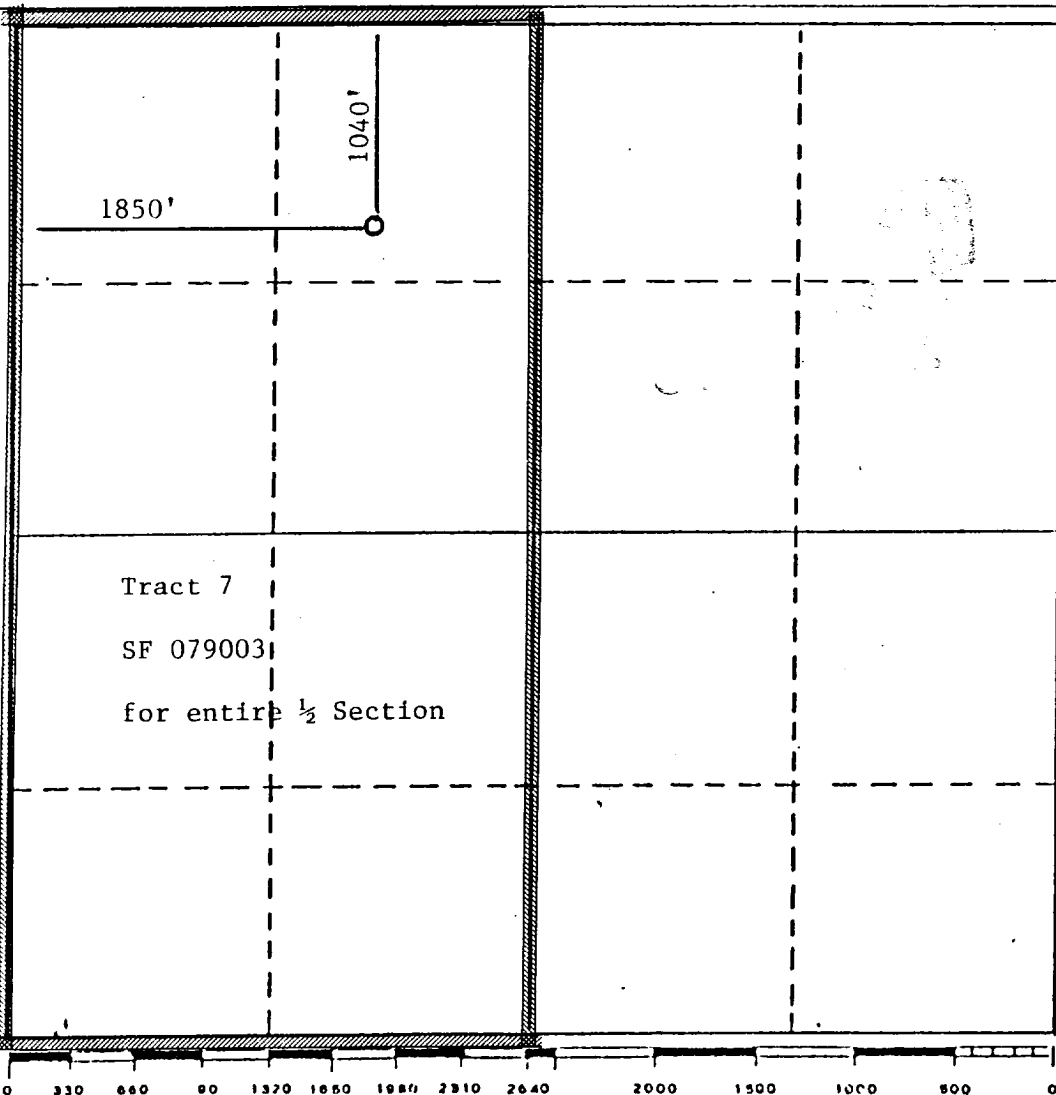
Operator BLACKWOOD & NICHOLS CO., LTD.		Lease NORTHEAST BLANCO UNIT		Well No. 211
Unit Letter C	Section 27	Township 31N	Range 7W, NMPM	County SAN JUAN
Actual Footage Location of Well: 1040 feet from the North line and 1850 feet from the West line				
Ground Level Elev. 6368' GL	Producing Formation Fruitland Coal	Pool Basin Fruitland Coal Gas		Dedicated Acreage: 320 Acres

1. Outline the acreage dedicated to the subject well by colored pencil or hachure marks on the plat below.
2. If more than one lease is dedicated to the well, outline each and identify the ownership thereof (both as to working interest and royalty).
3. If more than one lease of different ownership is dedicated to the well, have the interests of all owners been consolidated by communitization, unitization, force-pooling, etc?

Yes  No If answer is "yes," type of consolidation Unitization

If answer is "no," list the owners and tract descriptions which have actually been consolidated. (Use reverse side of this form if necessary.) \_\_\_\_\_

No allowable will be assigned to the well until all interests have been consolidated (by communitization, unitization, forced-pooling, or otherwise) or until a non-standard unit, eliminating such interests, has been approved by the Division.



<b>CERTIFICATION</b>	
I hereby certify that the information contained herein is true and complete to the best of my knowledge and belief.	
<i>William F. Clark</i>	
Name	William F. Clark
Position	Operations Manager
Company	Blackwood & Nichols Co., Ltd.
Date	December 21, 1988
I hereby certify that the well location shown on this plat was plotted from field notes of actual surveys made by me or under my supervision, and that the same is true and correct to the best of my knowledge and belief.	
Date Surveyed	April 8, 1985
Registered Professional Engineer and/or Land Surveyor	
Allison L. Kroeger	
Certificate No.	7922