

UNITED STATES
DEPARTMENT OF THE INTERIOR
BUREAU OF LAND MANAGEMENT

APPLICATION FOR PERMIT TO DRILL, DEEPEN, OR PLUG BACK

1a. TYPE OF WORK

DRILL ☒

DEEPEN ☐

PLUG BACK ☐

b. TYPE OF WELL

OIL
WELL ☐

GAS
WELL ☒

OTHER ☐

2. NAME OF OPERATOR

Meridian Oil Inc.

3. ADDRESS OF OPERATOR

PO Box 4289, Farmington, NM 87499

4. LOCATION OF WELL (Report location clearly and in accordance with any State requirements.)*

At surface

1450'S, 1450'W

At proposed prod. zone

14. DISTANCE IN MILES AND DIRECTION FROM NEAREST TOWN OR POST OFFICE*

2 miles SE of Aztec, NM

15. DISTANCE FROM PROPOSED*

LOCATION TO NEAREST
PROPERTY OR LEASE LINE, FT.
(Also to nearest drlg. unit line, if any)

1450'

16. NO. OF ACRES IN LEASE

760.00

17. NO. OF ACRES ASSIGNED
TO THIS WELL

320.00

18. DISTANCE FROM PROPOSED LOCATION*
TO NEAREST WELL, DRILLING, COMPLETED,
OR APPLIED FOR, ON THIS LEASE, FT.

1000'

19. PROPOSED DEPTH

5370'

20. ROTARY OR CABLE TOOLS

Rotary

21. ELEVATIONS (Show whether DF, BT, GR, etc.)

6163' GL DRILLING OPERATIONS AUTHORIZED ARE

22. APPROX. DATE WORK WILL START*

23. SUBJECT TO COMPLIANCE WITH ATTACHED
"GENERAL REQUIREMENTS"

This action is subject to technical and
procedural review pursuant to 43 CFR 3165.3,
and appeal pursuant to 43 CFR 3165.4.

SIZE OF HOLE	SIZE OF CASING	WEIGHT PER FOOT	SETTING DEPTH	
12 1/4"	9 5/8"	32.3#	200'	138 cu.ft.circulated
8 3/4"	7"	20.0#	2905'	507 cu.ft.cover Ojo Alamo
6 1/4"	4 1/2"	10.5#	2755-5370'	459 cu.ft.circ. liner

Selectively perforate and sand water fracture the Mesa Verde formation.

A 3000 psi WP and 6000 psi test double gate preventer equipped with
blind and pipe rams will be used for blow out prevention on this well.

This gas is dedicated.

The S/2 of Section 24 is dedicated to this well.

RECEIVED

OCT 01 1987

OIL CON. DIV.
DIST. 9

IN ABOVE SPACE DESCRIBE PROPOSED PROGRAM: If proposal is to deepen or plug back, give data on present productive zone and proposed new productive zone. If proposal is to drill or deepen directionally, give pertinent data on subsurface locations and measured and true vertical depths. Give blowout preventer program, if any.

24. SIGNED [Signature] TITLE Drilling Clerk DATE 9-25-87

(This space for Federal or State office use)

PERMIT NO. _____ APPROVAL DATE _____

APPROVED BY _____ TITLE _____ DATE _____
CONDITIONS OF APPROVAL, IF ANY:

NMOCG

*See Instructions On Reverse Side

**NEW MEXICO OIL CONSERVATION COMMISSION
WELL LOCATION AND ACREAGE DEDICATION PLAT**

Form C-102
Supersedes C-128
Effective 1-1-65

All distances must be from the outer boundaries of the Section.

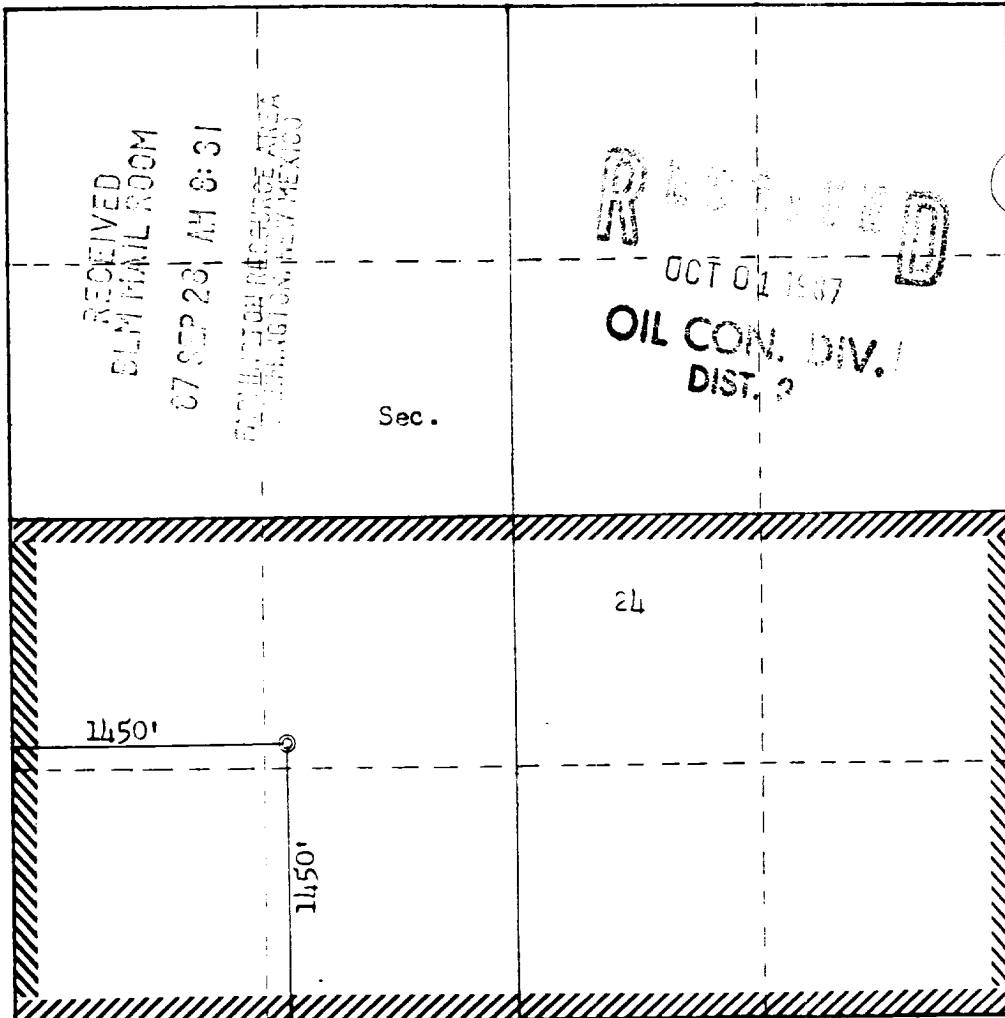
Operator MERIDIAN OIL INC.			Lease MURPHY COM (SF 078144)		Well No. 3
Unit Letter K	Section 24	Township 30N	Range 11W	County San Juan	
Actual Footage Location of Well: 1450 feet from the South line and 1450 feet from the West line					
Ground Level Elev: 6163	Producing Formation Mesa Verde		Pool Blanco		Dedicated Acreage: 320.00 713.24 Acres

1. Outline the acreage dedicated to the subject well by colored pencil or hachure marks on the plat below.
2. If more than one lease is dedicated to the well, outline each and identify the ownership thereof (both as to working interest and royalty).
3. If more than one lease of different ownership is dedicated to the well, have the interests of all owners been consolidated by communitization, unitization, force-pooling, etc?

☒ Yes ☐ No If answer is "yes," type of consolidation communitization

If answer is "no," list the owners and tract descriptions which have actually been consolidated. (Use reverse side of this form if necessary.) _____

No allowable will be assigned to the well until all interests have been consolidated (by communitization, unitization, forced-pooling, or otherwise) or until a non-standard unit, eliminating such interests, has been approved by the Commission.



Scale: 1"=1000'

CERTIFICATION

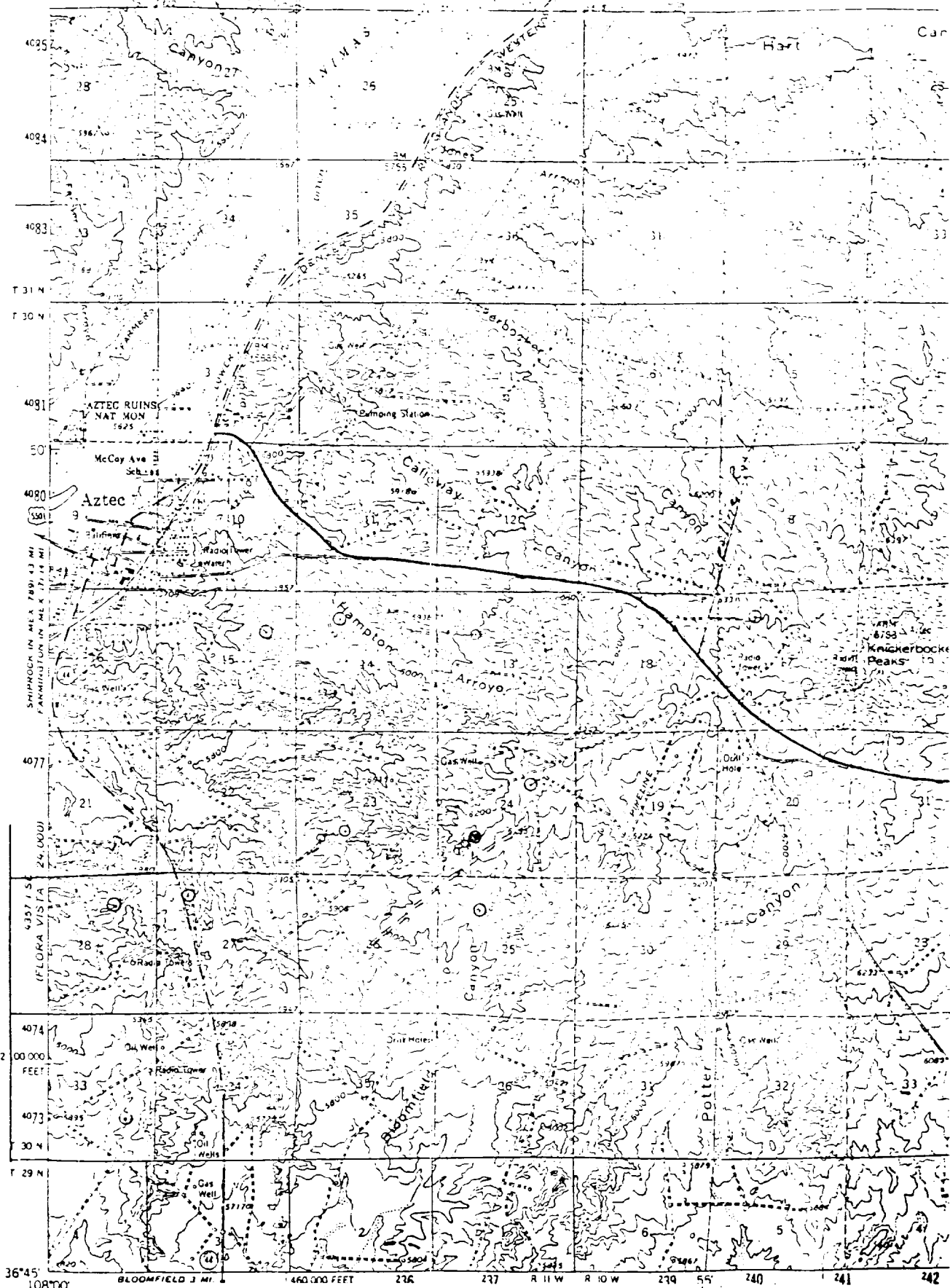
I hereby certify that the information contained herein is true and complete to the best of my knowledge and belief.

Name
Drilling Clerk
Position
MERIDIAN OIL INC.
Company
6-25-87

Date

I hereby certify that the well location shown on this plat was plotted from field notes of actual surveys made by me or under my supervision, and that the same is true and correct to the best of my knowledge and belief.

Date Surveyed
November 22, 1985
Registered Professional Engineer and Land Surveyor
Fred B. Kerr Jr.
Certificate No.
3950



2257 H NE
HORN CANYON
1:24,000

Mapped, ed

Control by U

Topography I

photographs

Polyconic pr

10,000 not

and zone

1:24,000

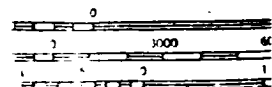
1:24,000

1:24,000

1:24,000

1:24,000

Vicinity Map for
MURPHY COM #3
11450'FSL 11450'FWL Sec. 24-T30N-R11W
SAN JUAN COUNTY, NEW MEXICO



NATIONAL