

UNITED STATES  
DEPARTMENT OF THE INTERIOR  
BUREAU OF LAND MANAGEMENT

RECEIVED  
MAIL ROOM

APPLICATION FOR PERMIT TO DRILL, DEEPEN, OR PLUG BACK

1a. TYPE OF WORK  
 DRILL  DEEPEN  PLUG BACK

b. TYPE OF WELL  
 OIL WELL  GAS WELL  OTHER

2. NAME OF OPERATOR  
 Meridian Oil Inc.

3. ADDRESS OF OPERATOR  
 PO Box 4289, Farmington, NM 87499

4. LOCATION OF WELL (Report location clearly and in accordance with any State requirements.)  
 At 1710' N, 1495' W

At proposed prod. zone

14. DISTANCE IN MILES AND DIRECTION FROM NEAREST TOWN OR POST OFFICE\*  
 10 miles from Aztec, NM

18. DISTANCE FROM PROPOSED\* LOCATION TO NEAREST PROPERTY OR LEASE LINE, FT. (Also to nearest drlg. unit line, if any)  
 1495'

16. NO. OF ACRES IN LEASE  
 160

17. NO. OF ACRES ASSIGNED TO THIS WELL  
 160.00

18. DISTANCE FROM PROPOSED\* LOCATION TO NEAREST WELL, DRILLING, COMPLETED, OR APPLIED FOR, ON THIS LEASE, FT.  
 400'

19. PROPOSED DEPTH  
 3031'

20. ROTARY OR CABLE TOOLS  
 Rotary

21. ELEVATION (Show whether DF, RT, GR, etc.)  
 6300' GL DRILLING OPERATORS AUTHORIZED ARE SUBJECT TO COMPLIANCE WITH ATTACHED

22. APPROX. DATE WORK WILL START\*

23. GENERAL REQUIREMENTS PROPOSED CASING AND CEMENTING PROGRAM This section is subject to technical and procedural review pursuant to 42 CFR 1105.2 and appeal procedures in 42 CFR 1105.2

SIZE OF HOLE	SIZE OF CASING	WEIGHT PER FOOT	SETTING DEPTH	
12 1/4"	9 5/8"	32.3#	200'	130 cf. circulated
8 3/4"	7"	20.0#	2834'	890 cf circ. surface
6 1/4"	5 1/2" liner	23.0#	3031'	do not cement

The Fruitland formation will be completed.

A 3000 psi WP and 6000 psi test double gate preventer equipped with blind and pipe rams will be used for blow out prevention on this well.

This gas is dedicated.

The NW/4 of Section 5 is dedicated to this well.

IN ABOVE SPACE DESCRIBE PROPOSED PROGRAM: If proposal is to deepen or plug back, give data on present productive zone and proposed new productive zone. If proposal is to drill or deepen directionally, give pertinent data on subsurface locations and measured and true vertical depths. Give blowout preventer program, if any.

24. SIGNED [Signature] TITLE Drilling Clerk DATE 04-25-88

(This space for Federal or State office use)

PERMIT NO. \_\_\_\_\_ APPROVAL DATE \_\_\_\_\_

APPROVED AS AMENDED

APPROVED BY \_\_\_\_\_ TITLE \_\_\_\_\_ DATE MAY 23 1988

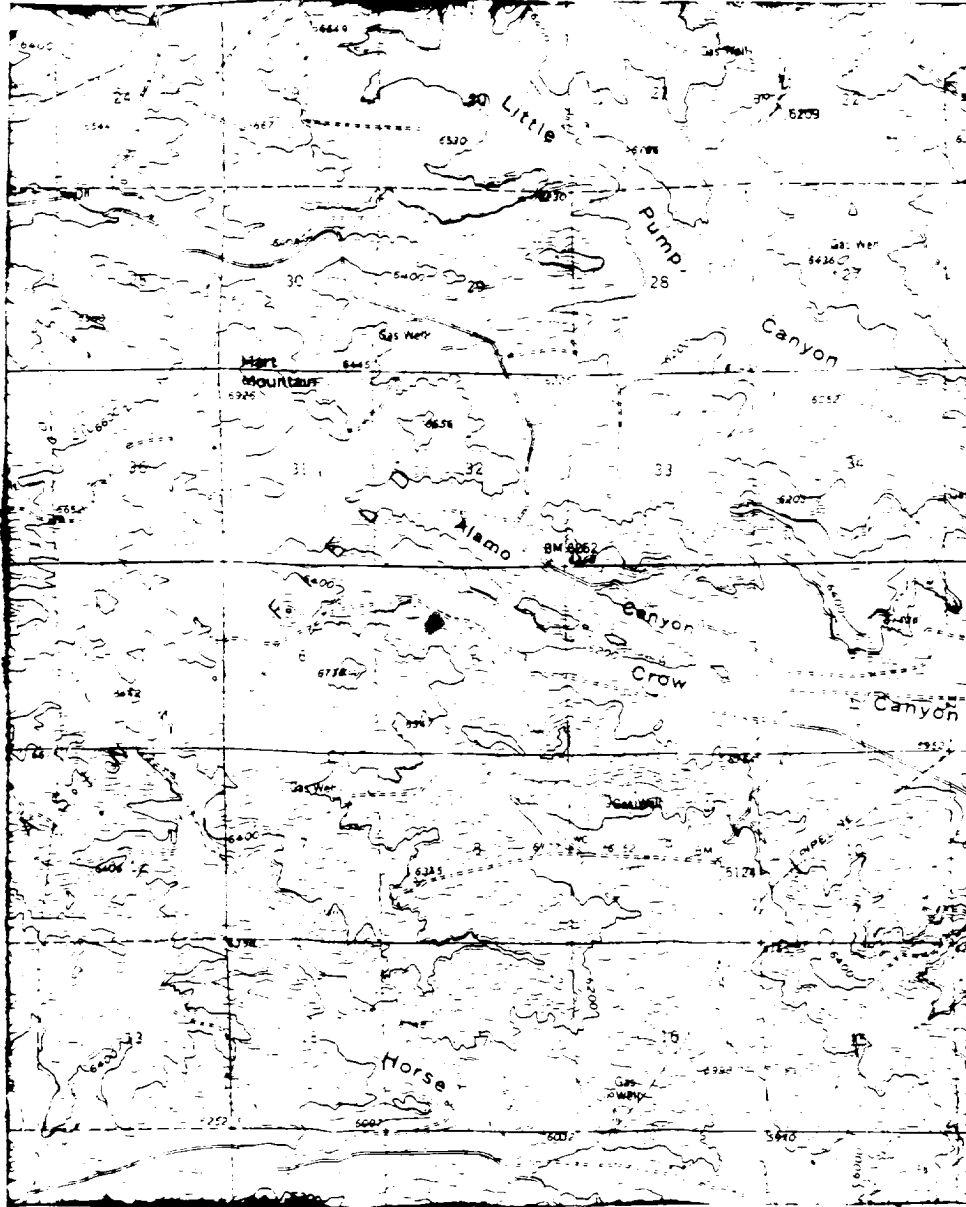
CONDITIONS OF APPROVAL, IF ANY:

[Signature]  
AREA MANAGER

Amoco  
\*See Instructions On Reverse Side



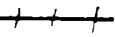




Woodmen #250  
NW 5-30-9



Map #2

LEGEND OF RIGHT-OF-WAYS

- EXISTING ROADS 
- EXISTING PIPELINES 
- EXISTING ROAD & PIPELINE 
- PROPOSED ROADS 
- PROPOSED PIPELINES 
- PROPOSED ROAD & PIPELINE 