

UNITED STATES
DEPARTMENT OF THE INTERIOR
GEOLOGICAL SURVEY

APPLICATION FOR PERMIT TO DRILL, DEEPEN, OR PLUG BACK

1a. TYPE OF WORK
 DRILL DEEPEN PLUG BACK
 b. TYPE OF WELL
 OIL WELL GAS WELL OTHER SINGLE ZONE MULTIPLE ZONE

2. NAME OF OPERATOR
 Tenneco Oil Company

3. ADDRESS OF OPERATOR
 P.O. Box 3249, Englewood, CO 80155

4. LOCATION OF WELL (Report location clearly and in accordance with any State requirements.)*
 At surface
 NE 1/4, Sec. 1, 1800' FEL, 1730' FNL
 At proposed prod. zone
 Same

14. DISTANCE IN MILES AND DIRECTION FROM NEAREST TOWN OR POST OFFICE*
 4 miles NW of Archuleta

15. DISTANCE FROM PROPOSED LOCATION TO NEAREST PROPERTY OR LEASE LINE, FT. (Also to nearest drig. unit line, if any)
 1746

16. NO. OF ACRES IN LEASE
 1275.56

17. NO. OF ACRES ASSIGNED TO THIS WELL
 327 161

18. DISTANCE FROM PROPOSED LOCATION TO NEAREST WELL, DRILLING, COMPLETED, OR APPLIED FOR, ON THIS LEASE, FT.
 450

19. PROPOSED DEPTH
 3000'

20. ROTARY OR CABLE TOOLS
 Rotary

21. ELEVATIONS (Show whether DF, RT, GR, etc.)
 6324
 DRILLING OPERATIONS AUTHORIZED ARE SUBJECT TO COMPLIANCE WITH ATTACHED "GENERAL REQUIREMENTS"

22. APPROX. DATE WORK WILL START*
 7/24/88

23. PROPOSED CASING AND CEMENTING PROGRAM
 This action is subject to technical and procedural review pursuant to 43 CFR 3165.3 and appeal pursuant to 43 CFR 3165.4.

SIZE OF HOLE	SIZE OF CASING	WEIGHT PER FOOT	SETTING DEPTH	QUANTITY OF CEMENT
12 1/2"	9 5/8"	36#	± 200	200 cu.ft. - Surface
8 3/4"	7"	23#	±2500	600 cu.ft. - Surface
6 1/2"	5 1/2" - Liner	23#	±2400-2934	None

66' open hole

See Attached Drilling Procedure.

See Item 1.B. in Surface Use Plan and Map 2 for BLM Right-of-Way Application.

RECEIVED
 AUG 5 1988
 OIL CON. DIV.]
 DIST. 3

IN ABOVE SPACE DESCRIBE PROPOSED PROGRAM: If proposal is to deepen or plug back, give data on present productive zone and proposed new productive zone. If proposal is to drill or deepen directionally, give pertinent data on subsurface locations and measured and true vertical depths. Give blowout preventer program, if any.

24. SIGNED Larry Bell TITLE Admin. Supervisor DATE 6/27/88

(This space for Federal or State office use)

PERMIT NO. _____ APPROVAL DATE _____

APPROVED BY _____ TITLE _____ DATE _____

CONDITIONS OF APPROVAL, IF ANY:

2/5

NMOCC

[Signature]
 DATE

NEW MEXICO OIL CONSERVATION COMMISSION
WELL LOCATION AND ACREAGE DEDICATION PLAT

Form C-102
Supersedes C-128
Effective 1-1-65

All distances must be from the outer boundaries of the Section

Operator TENNECO OIL COMPANY			Lease PRITCHARD			Well No. 10		
Unit Letter G	Section 1	Township 30 N	Range 9 W	County SAN JUAN				
Actual Footage Location of Well: 1730 feet from the North line and 1800 feet from the East line								
Ground Level Elev. 6324	Producing Formation Fruitland Coal		Pool <i>Under</i> Blanco Fruitland			Dedicated Acreage: 321 1/61 Acres		

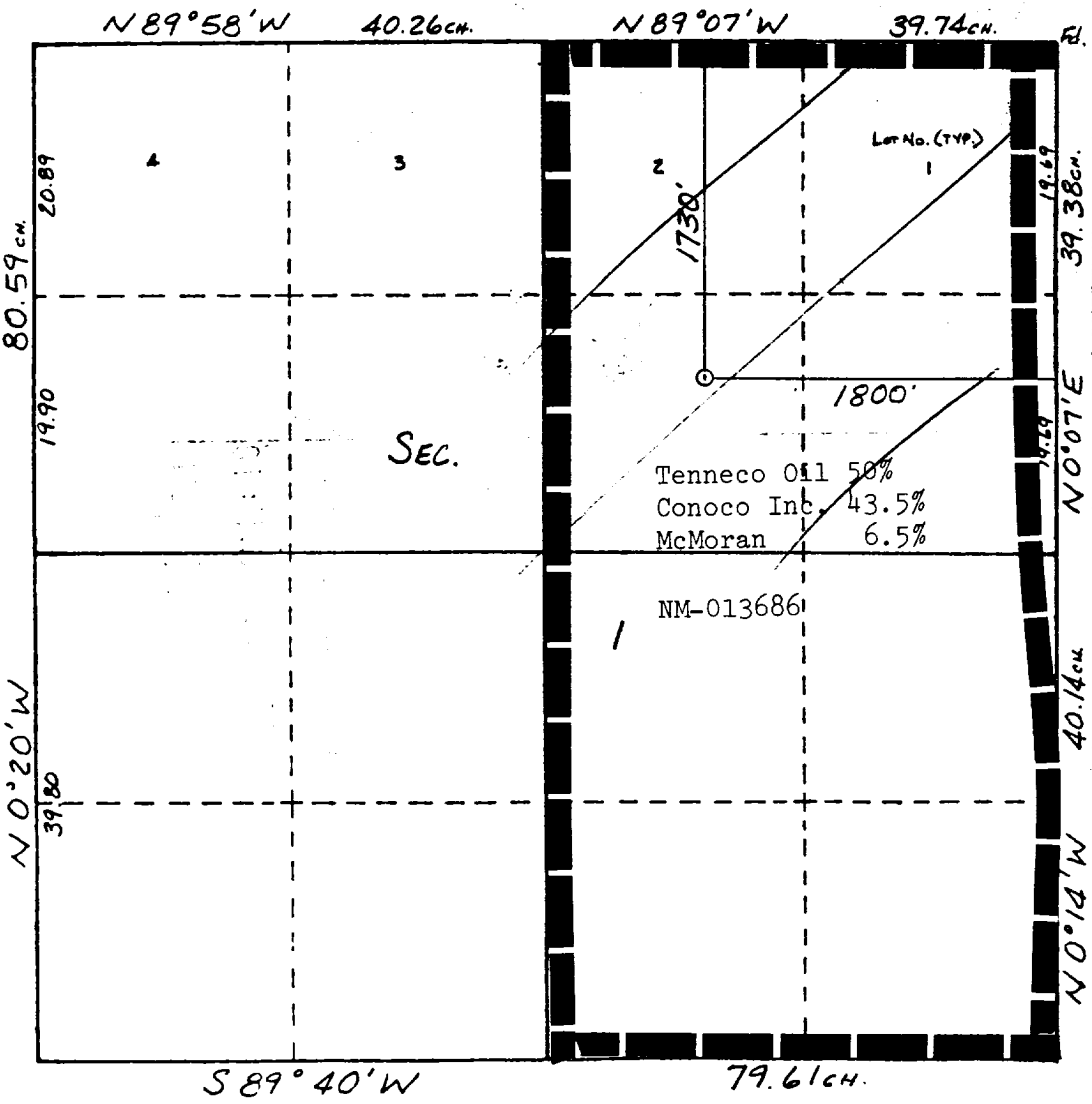
1. Outline the acreage dedicated to the subject well by colored pencil or hachure marks on the plat below.
2. If more than one lease is dedicated to the well, outline each and identify the ownership thereof (both as to working interest and royalty).
3. If more than one lease of different ownership is dedicated to the well, have the interests of all owners been consolidated by communitization, unitization, force-pooling, etc?

RECEIVED
AUG 5 1988

Yes No If answer is "yes," type of consolidation _____ **OIL CON. DIV.**

If answer is "no," list the owners and tract descriptions which have actually been consolidated. (Use reverse side of this form if necessary.) _____ **DIST. 3**

No allowable will be assigned to the well until all interests have been consolidated (by communitization, unitization, forced-pooling, or otherwise) or until a non-standard unit, eliminating such interests, has been approved by the Commission.



CERTIFICATION

I hereby certify that the information contained herein is true and complete to the best of my knowledge and belief.

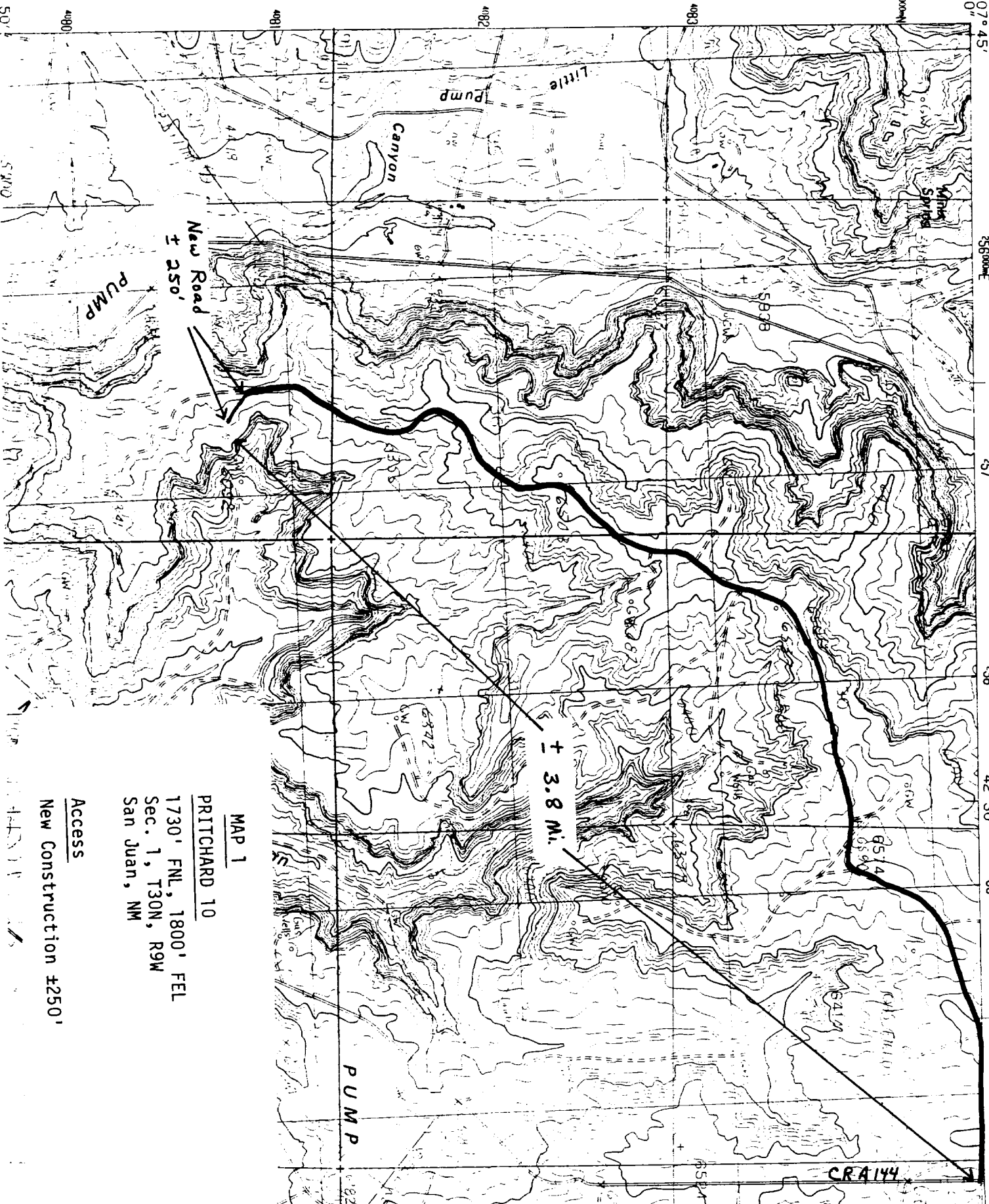
Name: **Larry Bell**
Position: **Admin Supervisor**
Company: **Tenneco Oil**
Date: **6-23-88**

I hereby certify that the well location shown on this plat was plotted from field notes of actual surveys made by me or under my supervision, and that the same is true and correct to the best of my knowledge and belief.

Date Surveyed: **6-23-88**
W. **W. H. HINKEN II**
Registered Professional Engineer and Land Surveyor
#8466
Certificated Professional Land Surveyor

GEOLOGICAL SURVEY

107° 45' 36° 52' 30" 56000E 257 258 42' 30" 259 760



MAP 1

PRITCHARD 10

1730' FNL, 1800' FEL

Sec. 1, T30N, R9W

San Juan, NM

Access

New Construction ±250'

CRA 144