

MERIDIAN OIL

100.25

July 11, 1988

Mr. William LeMay
New Mexico Oil Conservation Division
Post Office Box 2088
Santa Fe, New Mexico 87501

Dear Mr. LeMay:

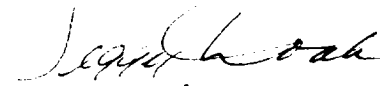
This is a request for administrative approval for a non-standard unit for a gas well location in the Undesignated Fruitland Pool.

It is intended to locate the Meridian Oil Inc.'s Quigley Com #250 at 1890' from the South line and 1043' from the West line of Section 6, T-30-N, R-9-W, San Juan County, New Mexico.

A copy of this application is being submitted to all offset operators by certified mail with a request that they furnish your Santa Fe office with a Waiver of Objection, and return one copy to this office.

A plat showing the proposed well location and configuration of Section 6, along with an ownership plat, are attached.

Sincerely yours,


Peggy Doak

encl.

~~SET FOR HEARING~~

WAIVER

_____ hereby waives objection to Meridian Oil Inc.'s application for a non-standard unit location for their Quigley Com #250 as proposed above.

By: _____

Date: _____

cc: Tenneco Oil

RECEIVED
JUL 14 1988
OIL CON. DIV.
DIST. 3

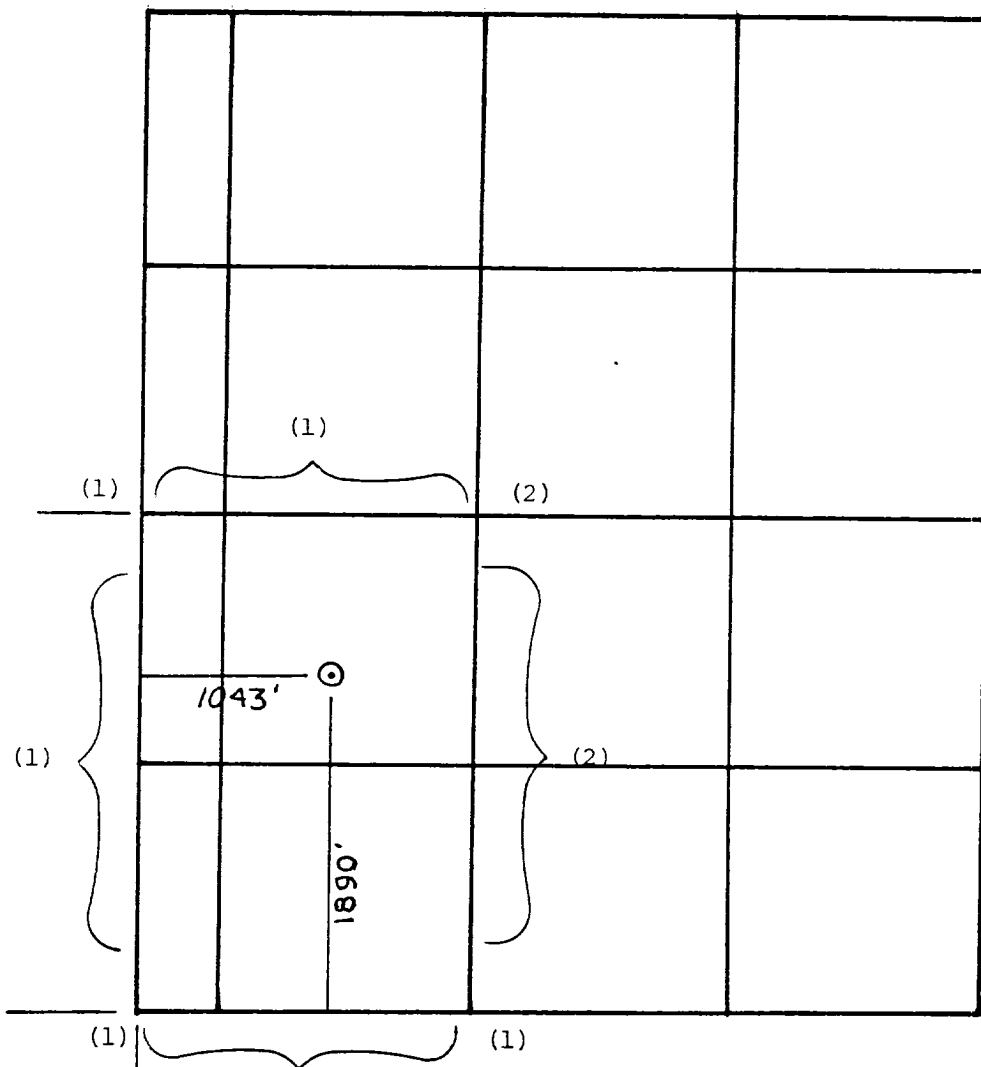
MERIDIAN OIL INC.

Well Name Quigley Com #250, Undesignated Fruitland

Footage----- 1890' FSL; 1043' FWL

APPLICATION FOR NON-STANDARD PRORATION UNIT

County San Juan State New Mexico Section 6 Township 30N Range 9W



REMARKS: OFFSET OPERATORS:

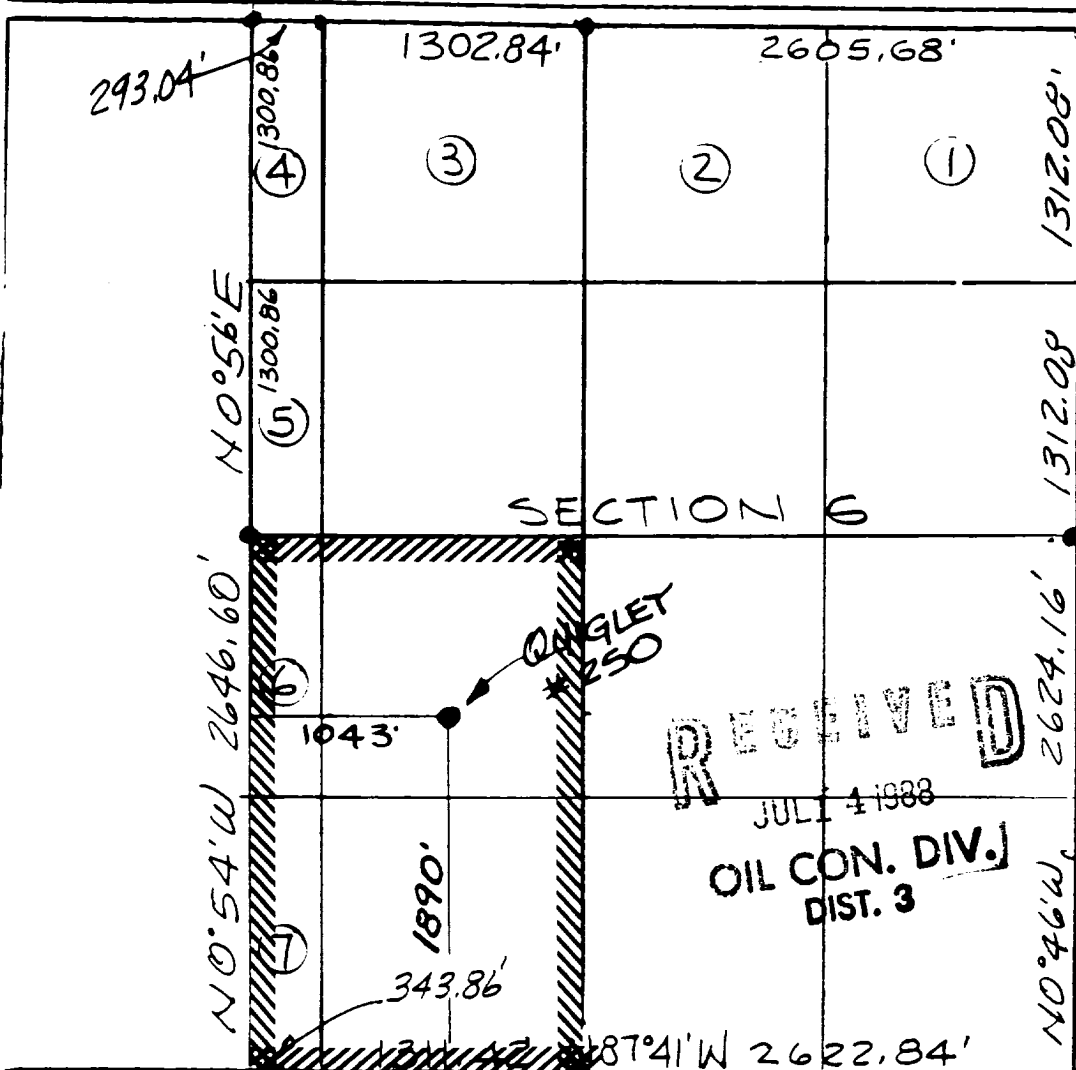
(1) Meridian Oil Inc.

(2) Tenneco Oil Company

Form C-100
Supersedes C-12
Effective 1-4-68

| | | | | | | | | | | | | | | | |
|---------------------------------|--|---------------------|--|----------|--|-------------------------|--|----------|--|-----------------|--|------|--|-------|--|
| G-100000 | | MERIDIAN OIL INC. | | Lease | | QUIGLEY COM (SF-081134) | | Well No. | | 250 | | | | | |
| Unit Letter | | Section | | Township | | Range | | County | | | | | | | |
| K | | 6 | | 30 NORTH | | 9 WEST | | SAN JUAN | | | | | | | |
| Actual Footage Location of Well | | | | | | | | | | | | | | | |
| 1890 | | feet from the | | SOUTH | | line and | | 1043 | | feet from the | | WEST | | line | |
| Ground Level Elev. | | Producing Formation | | | | Pool | | | | Dedicated Acres | | | | Acres | |
| 6495 | | Fruitland | | | | Undesignated | | | | 100.25 | | | | | |

- No allowable will be assigned to the well until all interests have been consolidated (by communitization, unitization, forced-pooling, or otherwise) or until a non-standard unit, eliminating such interests, has been approved by the Commission.



| | |
|-----------------|-------------------|
| Name | Drilling Clerk |
| Position | Meridian Oil Inc. |
| Company | |
| Date | |

I hereby certify that the above location shows a site that was plotted from field notes of actual observations made by me or under my supervision, and that the same is true and correct to the best of my knowledge.

| | |
|--|----------------|
| Date Surveyed | APRIL 11, 1988 |
| Registered Professional Engineer and/or Land Surveyor | |

NEALE C. EDWARDS

Cardiff Cn.
6857