

30-045-27041

Form 3160-3
(November 1983)
(formerly 9-331C)

SUBMIT IN TRIPLICATE*
(Other instructions on
reverse side)

Form approved.
Budget Bureau No. 1004-0136
Expires August 31, 1985

UNITED STATES
DEPARTMENT OF THE INTERIOR
BUREAU OF LAND MANAGEMENT

5. LEASE DESIGNATION AND SERIAL NO.
SF-078201B

6. IF INDIAN, ALLOTTEE OR TRIBE NAME

7. UNIT AGREEMENT NAME

8. FARM OR LEASE NAME
Riddle A Com

9. WELL NO.
201

10. FIELD AND POOL, OR WILDCAT
Undes. Fruitland Coal

11. SEC., T., R., M., OR BLE.
AND SURVEY OR AREA
Sec. 15, T-30-N, R-9-W
NMPM

12. COUNTY OR PARISH | 13. STATE
San Juan | NM

APPLICATION FOR PERMIT TO DRILL, DEEPEN, OR PLUG BACK

1a. TYPE OF WORK
DRILL DEEPEN PLUG BACK

b. TYPE OF WELL
OIL WELL GAS WELL OTHER
SINGLE ZONE MULTIPLE ZONE

2. NAME OF OPERATOR
Meridian Oil Inc.

3. ADDRESS OF OPERATOR
PO Box 4289, Farmington, NM 87499

4. LOCATION OF WELL (Report location clearly and in accordance with any State requirements.)
At 935' N, 1480' W
At proposed prod. zone

14. DISTANCE IN MILES AND DIRECTION FROM NEAREST TOWN OR POST OFFICE*
12 miles from Aztec, NM

15. DISTANCE FROM PROPOSED* LOCATION TO NEAREST PROPERTY OR LEASE LINE, FT. (Also to nearest drlg. unit line, if any)
935

16. NO. OF ACRES IN LEASE
160

17. NO. OF ACRES ASSIGNED TO THIS WELL
160.00

18. DISTANCE FROM PROPOSED LOCATION* TO NEAREST WELL, DRILLING, COMPLETED, OR APPLIED FOR, ON THIS LEASE, FT.
500'

19. PROPOSED DEPTH
3145'

20. ROTARY OR CABLE TOOLS
Rotary

21. ELEVATIONS (Show whether DF, RT, GR, etc.)
6392' GL
DRILLING OPERATIONS AUTHORIZED ARE SUBJECT TO COMPLIANCE WITH ATTACHED

22. APPROX. DATE WORK WILL START*

23. PROPOSED CASING REQUIREMENTS LISTING PROGRAM
This action is subject to technical and procedural review pursuant to 43 CFR 3165.8 and appeal pursuant to 43 CFR 3165.4.

SIZE OF HOLE	SIZE OF CASING	WEIGHT PER FOOT	SETTING DEPTH	
12 1/4"	9 5/8"	32.3#	200'	30 cf. circulated
8 3/4"	7"	20.0#	2902'	920 cf circ. surface
6 1/4"	5 1/2" liner	23.0#	3145'	do not cement

The Fruitland coal formation will be completed.

A 3000 psi WP and 6000 psi test double gate preventer equipped with blind and pipe rams will be used for blow out prevention on this well.

This gas is dedicated.

The NW/4 of Section 15 is dedicated to this well.

IN ABOVE SPACE DESCRIBE PROPOSED PROGRAM: If proposal is to deepen or plug back, give data on present productive zone and proposed new productive zone. If proposal is to drill or deepen directionally, give pertinent data on subsurface locations and measured and true vertical depths. Give blowout preventer program, if any.

SIGNED: *[Signature]* TITLE: Regulatory Affairs DATE: 08-05-88

(This space for Federal or State office use)

PERMIT NO. _____ APPROVAL DATE _____

APPROVED BY _____ TITLE _____ DATE _____

CONDITIONS OF APPROVAL, IF ANY:

[Handwritten initials]

NMOCC

*See Instructions On Reverse Side

APPROVED AS AMENDED
[Signature]
AREA

OIL CONSERVATION DIVISION

STATE OF NEW MEXICO
ENERGY AND MINERALS DEPARTMENT

P. O. BOX 2088
SANTA FE, NEW MEXICO 87501

Form C-102
Revised 10-1-78

All distances must be from the outer boundaries of the Section.

Operator Meridian Oil Inc.		Lease Riddle A Com (SF-078201B)		Well No. 201
Unit Letter C	Section 15	Township 30North	Range 9 West	County San Juan
Actual Footage Location of Well: 935 feet from the North line and 1480 feet from the West line				
Ground Level Elev. 6392'	Producing Formation Fruitland Coal	Pool Undesignated	Dedicated Acreage: 160 Acres	

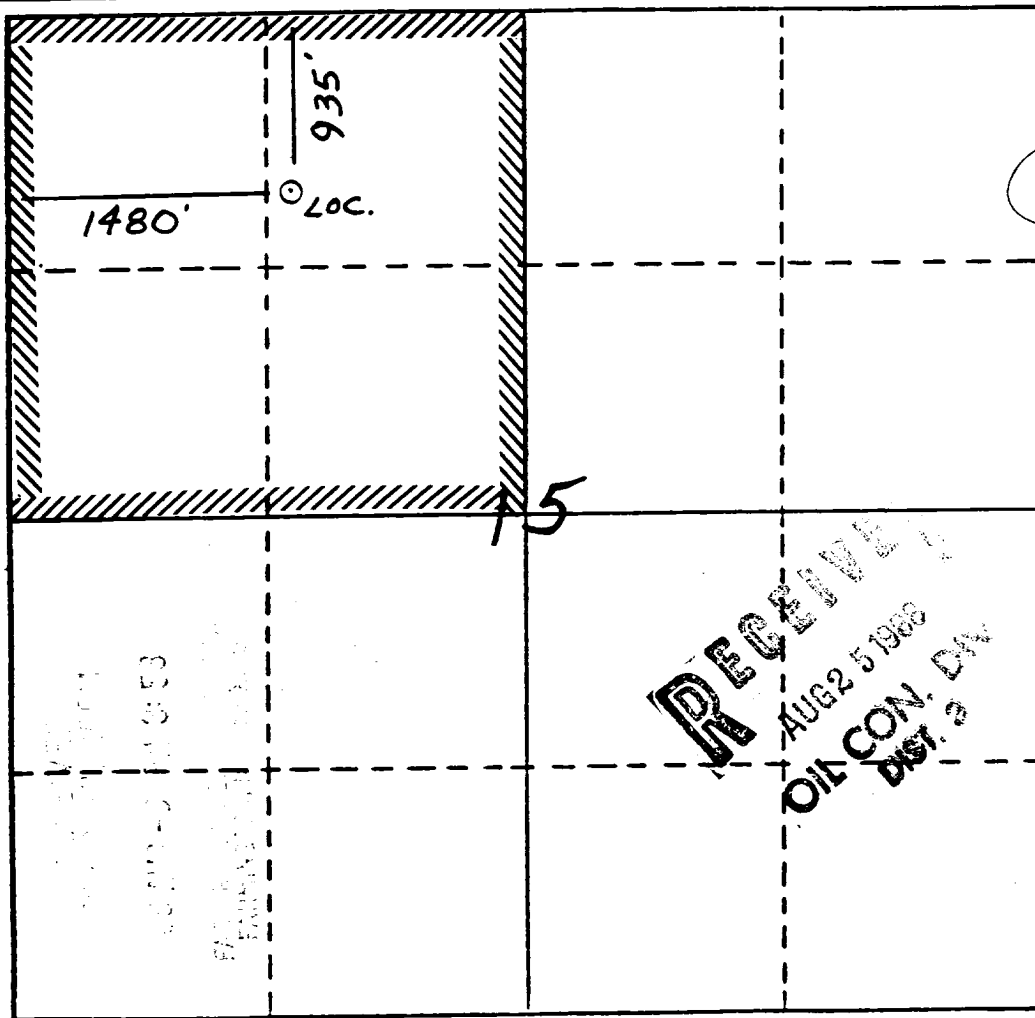
1. Outline the acreage dedicated to the subject well by colored pencil or hachure marks on the plat below.
2. If more than one lease is dedicated to the well, outline each and identify the ownership thereof (both as to working interest and royalty).
3. If more than one lease of different ownership is dedicated to the well, have the interests of all owners been consolidated by communitization, unitization, force-pooling, etc?

Yes No If answer is "yes," type of consolidation communitization

If answer is "no," list the owners and tract descriptions which have actually been consolidated. (Use reverse side of this form if necessary.) _____

No allowable will be assigned to the well until all interests have been consolidated (by communitization, unitization, forced-pooling, or otherwise) or until a non-standard unit, eliminating such interests, has been approved by the Division.

NOTE: reissued to show moved location.



CERTIFICATION

I hereby certify that the information contained herein is true and complete to the best of my knowledge and belief.

[Signature]
Name

Regulatory Affairs

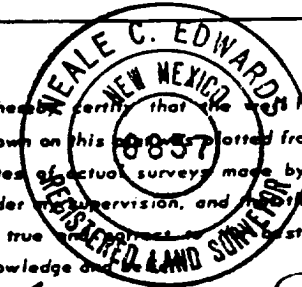
Position
Meridian Oil Inc.

Company
8-8-88

Date

8-8-88

I hereby certify that the well location shown on this plat is plotted from field notes of actual surveys made by me or under my supervision, and that the same is true and correct to the best of my knowledge and belief.



[Signature]
Date Surveyed

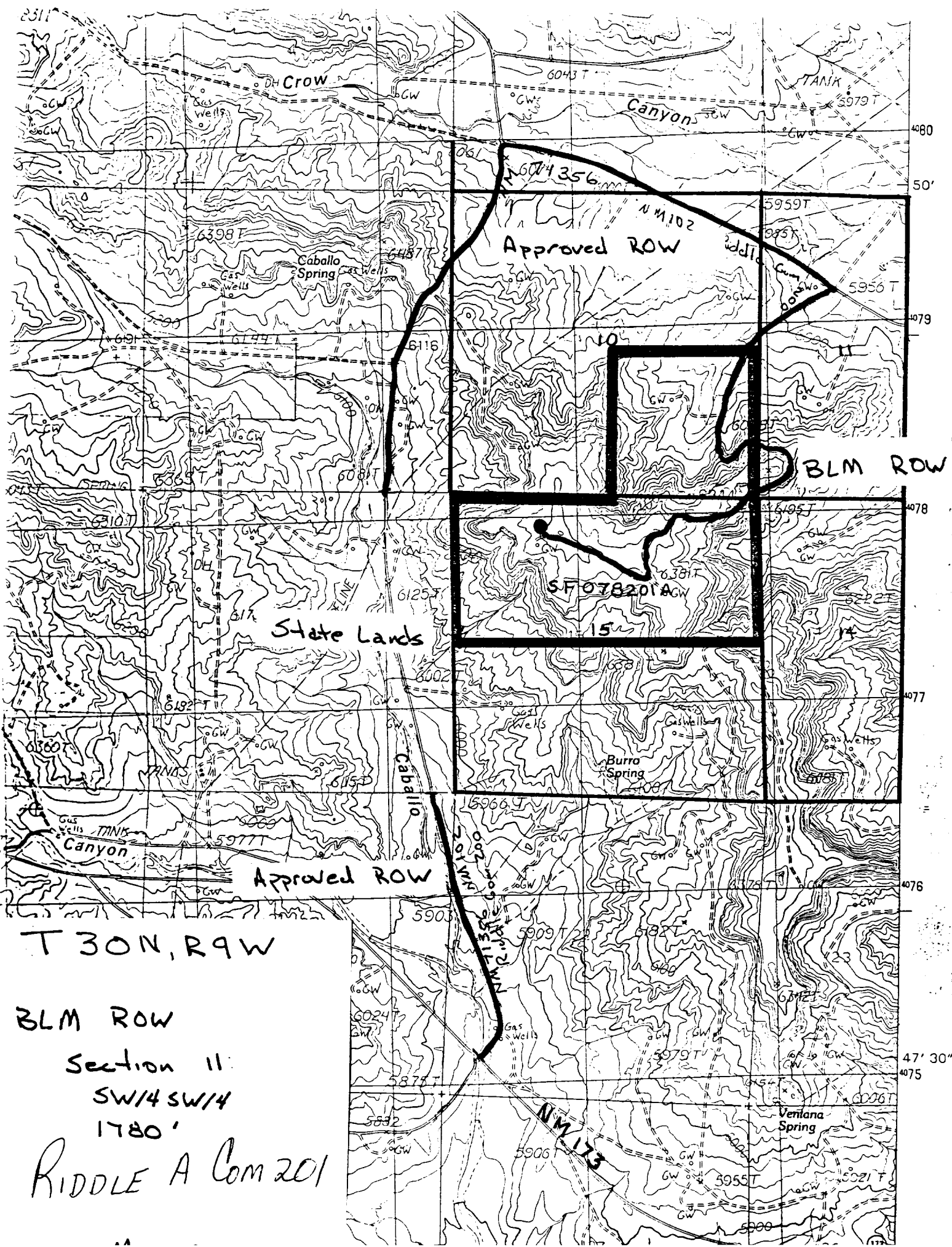
7-7-88

Registered Professional Engineer and/or Land Surveyor

Neale C. Edwards

Certificate No.
6857





State Lands

Approved ROW

BLM ROW

Approved ROW

T 30N, R 9W

BLM ROW

Section 11

SW/4 SW/4

1780'

RIDDLE A Com 201

604356

SF 078201 AGW

NM 113

Canyon SW

Caballo Spring

Burro Spring

Veniana Spring

6043 T

TANK

5979 T

6398 T

6487 T

5959 T

5956 T

6144 T

6116

10

6365 T

6081 T

6195 T

6310 T

6125 T

6381 T

6185 T

6182 T

6002

6122 T

5977 T

6115 T

6168 T

5908

5909 T

6182 T

6024 T

5877 T

5979 T

5892

5906 T

6021 T

5955 T

6021 T

5892

5900

5900

5900

4080

50'

4079

4078

4077

4076

47' 30"

4075