

UNITED STATES
DEPARTMENT OF THE INTERIOR
BUREAU OF LAND MANAGEMENT

SUBMIT IN TRIPLICATE*
(Other instructions on
reverse side)

Form approved.
Budget Bureau No. 1004-0136
Expires August 31, 1985

APPLICATION FOR PERMIT TO DRILL, DEEPEN, OR PLUG BACK

1a. TYPE OF WORK

DRILL ☒

DEEPEEN ☐

PLUG BACK ☐

b. TYPE OF WELL

OIL
WELL ☐

GAS
WELL ☒

OTHER

2. NAME OF OPERATOR

Meridian Oil Inc.

3. ADDRESS OF OPERATOR

PO Box 4289, Farmington, NM 87499

4. LOCATION OF WELL (Report location clearly and in accordance with any State requirements.)*

At surface
1190'N, 855'E

At proposed prod. zone

14. DISTANCE IN MILES AND DIRECTION FROM NEAREST TOWN OR POST OFFICE*

6 miles from Archuleta Dam, NM

15. DISTANCE FROM PROPOSED*

LOCATION TO NEAREST
PROPERTY OR LEASE LINE, FT.
(Also to nearest drig. unit line, if any)

855'

16. NO. OF ACRES IN LEASE

480

17. NO. OF ACRES ASSIGNED

TO THIS WELL
160.00

18. DISTANCE FROM PROPOSED LOCATION*
TO NEAREST WELL, DRILLING, COMPLETED,
OR APPLIED FOR, ON THIS LEASE, FT.

600'

19. PROPOSED DEPTH

2650'

20. ROTARY OR CABLE TOOLS

Rotary

21. ELEVATIONS (Show whether DF, RT, GR, etc.)

5863'GL

DRILLING OPERATIONS AUTHORIZED ARE
SUBJECT TO COMPLIANCE WITH ATTACHED

22. APPROX. DATE WORK WILL START*

23. PROPOSED TESTING AND CEMENTING PROGRAM

This program is subject to technical and
procedural review pursuant to 43 CFR 3163.3
and appeal pursuant to 43 CFR 3165.4.

SIZE OF HOLE	SIZE OF CASING	WEIGHT PER FOOT	SETTING DEPTH	
12 1/4"	9 5/8"	32.3#	200'	130 cf. circulated
8 3/4"	7"	20.0#	2380'	289 cf cover Ojo Alamo
6 1/4"	5 1/2" liner	23.0#	2650'	do not cement

The Fruitland coal formation will be completed.

A 3000 psi WP and 6000 psi test double gate preventer equipped with
blind and pipe rams will be used for blow out prevention on this well.

This gas is dedicated.

The NE/4 of Section 11 is dedicated to this well.

RECEIVED
OCT 06 1988

OIL CON. DIV.
DIST. 3

IN ABOVE SPACE DESCRIBE PROPOSED PROGRAM: If proposal is to deepen or plug back, give data on present productive zone and proposed new productive zone. If proposal is to drill or deepen directionally, give pertinent data on subsurface locations and measured and true vertical depths. Give blowout preventer program, if any.

24.

SIGNED

TITLE

Regulatory Affairs DATE 09-18-88

(This space for Federal or State office use)

"Approval of this action does
not warrant that the applicant
holds legal or equitable rights
or title to this lease."

APPROVED BY

TITLE

APPROVAL DATE

APPROVED

AS AMENDED

DATE

NR1000

*See Instructions On Reverse Side

Title 18 U.S.C. Section 1001, makes it a crime for any person knowingly and willfully to make to any department or agency of the United States any false, fictitious or fraudulent statements or representations as to any matter within its jurisdiction.

All distances must be from the outer boundaries of the Section.

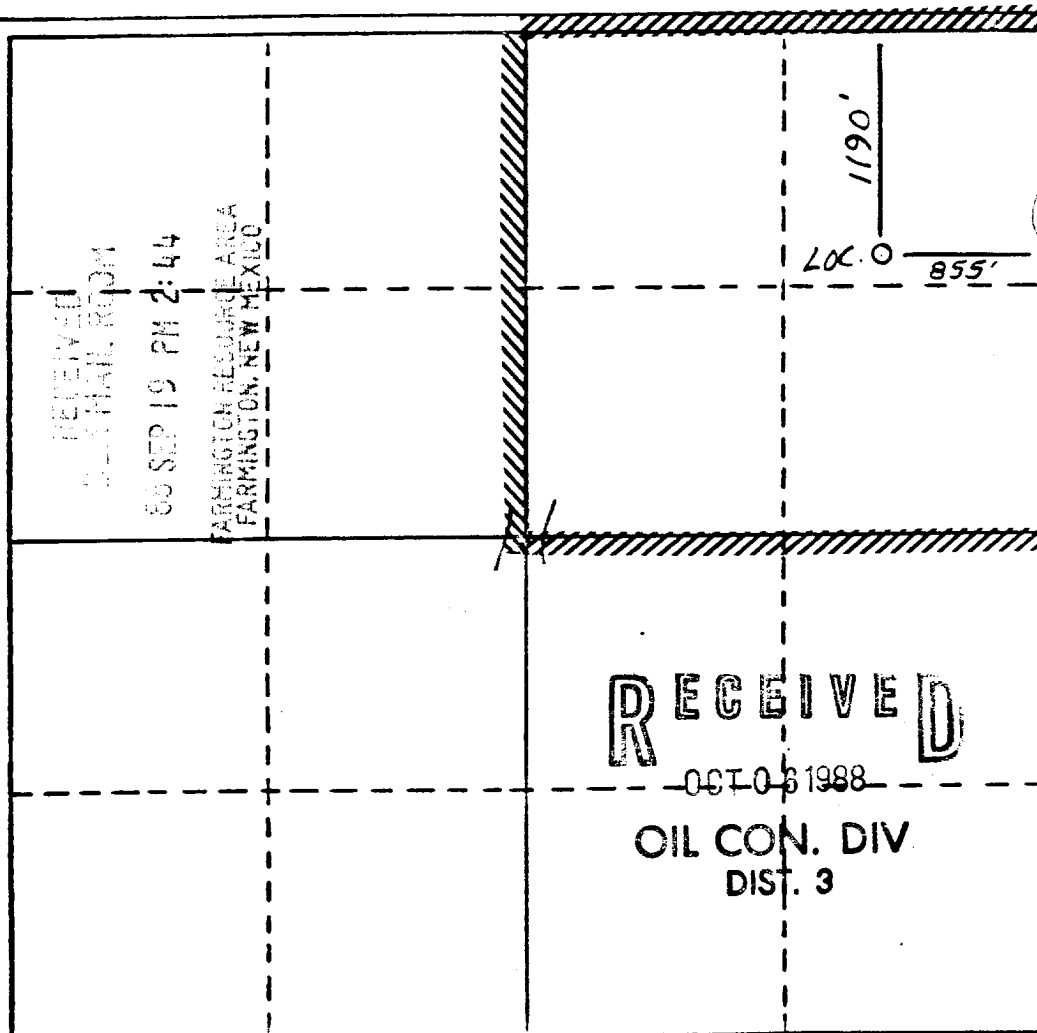
Operator Meridian Oil Inc.		Lease Lindsey Com (SF-078536)		Well No. 250
Unit Letter A	Section 11	Township 30 North	Range 9 West	County San Juan
Actual Footage Location of Well: 1190 feet from the North line and 855 feet from the East line				
Ground Level Elev. 5763	Producing Formation Fruitland Coal	Pool Undesignated	Dedicated Acreage: 160 Acres	

1. Outline the acreage dedicated to the subject well by colored pencil or hatchure marks on the plat below.
2. If more than one lease is dedicated to the well, outline each and identify the ownership thereof (both as to working interest and royalty).
3. If more than one lease of different ownership is dedicated to the well, have the interests of all owners been consolidated by communitization, unitization, force-pooling, etc?

☒ Yes ☐ No If answer is "yes," type of consolidation communitization

If answer is "no," list the owners and tract descriptions which have actually been consolidated. (Use reverse side of this form if necessary.) _____

No allowable will be assigned to the well until all interests have been consolidated (by communitization, unitization, forced-pooling, or otherwise) or until a non-standard unit, eliminating such interests, has been approved by the Division



CERTIFICATION

I hereby certify that the information contained herein is true and complete to the best of my knowledge and belief.

Neale C. Edwards

Name
Drilling Clerk

Position
Meridian Oil Inc.

Company
Meridian Oil Inc.

Date
9-18-88

I hereby certify that the location shown on this plat was obtained from field notes of actual surveys made by me or under my supervision, and that the same is true and correct to the best of my knowledge and belief.

Neale C. Edwards

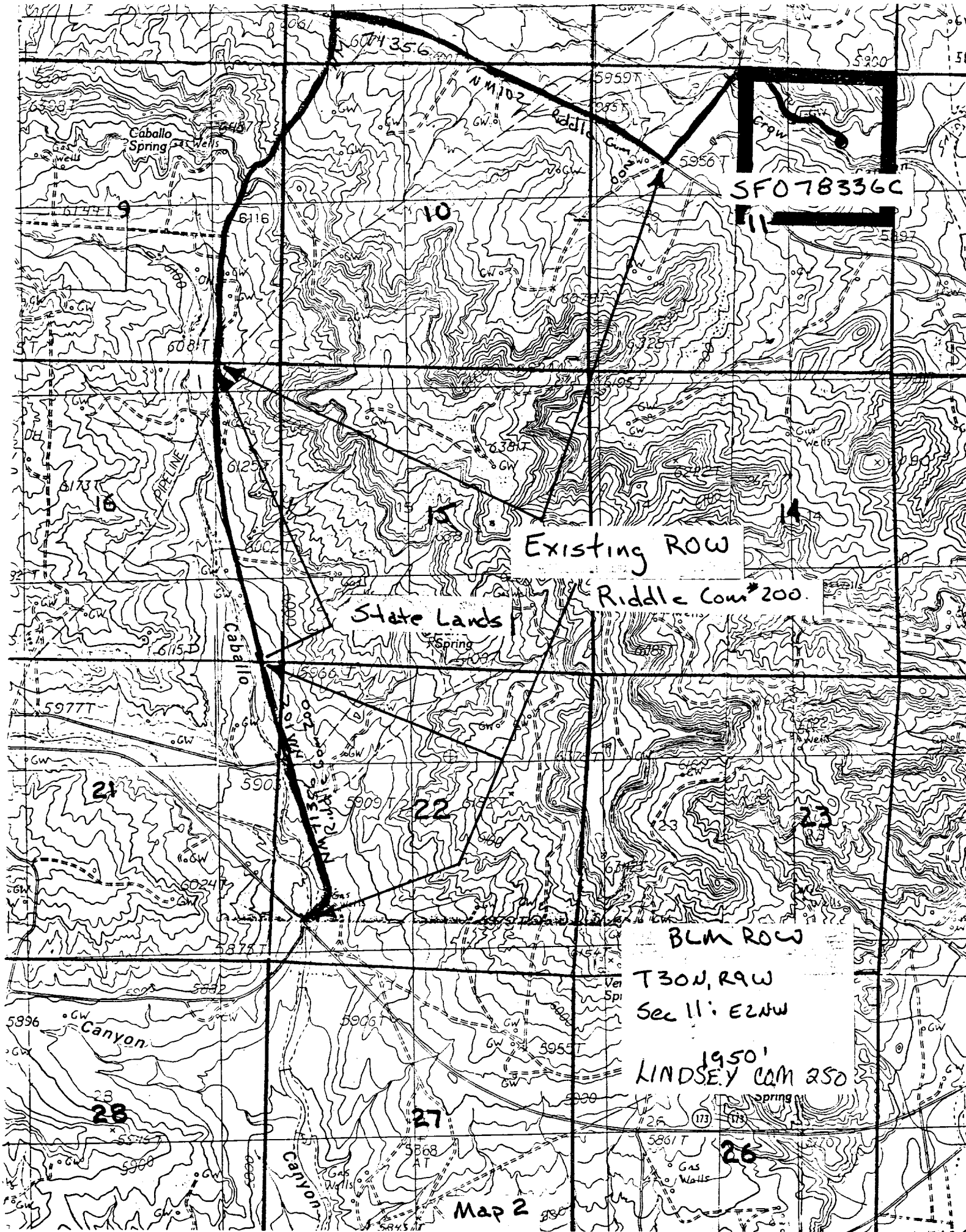
Date Surveyed
8-11-88

Registered Professional Engineer and/or Land Surveyor

Neale C. Edwards

Certificate No.
6057

0 330 660 990 1320 1650 1980 2310 2640 2970 3300 3630 3960 4290 4620 4950 5280 5610 5940 6270 6600 6930 7260 7590 7920 8250 8580 8910 9240 9570 9900 0



SF078336C

Existing ROW

State Lands

Riddle Com #200

BLM ROW

T30N, R9W
Sec 11: E2NW

1950'
LINDSEY COM 250

Map 2