

UNITED STATES
DEPARTMENT OF THE INTERIOR
GEOLOGICAL SURVEY

APPLICATION FOR PERMIT TO DRILL, DEEPEN, OR PLUG BACK

1a. TYPE OF WORK

DRILL ☒DEEPEN ☐PLUG BACK ☐

b. TYPE OF WELL

OIL
WELL ☐GAS
WELL ☒OTHER ☐SINGLE
ZONE ☒MULTIPLE
ZONE ☐

2. NAME OF OPERATOR

Blackwood & Nichols Co., LTD

3. ADDRESS OF OPERATOR

P.O. Box 1237, Durango, CO 81302-1237

4. LOCATION OF WELL (Report location clearly and in accordance with any State requirements.)*
At surface

1010'FNL - 1310'FEL

At proposed prod. zone

14. DISTANCE IN MILES AND DIRECTION FROM NEAREST TOWN OR POST OFFICE*

17 miles NE of Blanco, New Mexico

15. DISTANCE FROM PROPOSED*
LOCATION TO NEAREST
PROPERTY OR LEASE LINE, FT.

(Also to nearest drg. unit line, if any)

1310'

16. NO. OF ACRES IN LEASE

2314.56

18. DISTANCE FROM PROPOSED LOCATION*

TO NEAREST WELL, DRILLING, COMPLETED,
OR APPLIED FOR, ON THIS LEASE, FT.

1500'

19. PROPOSED DEPTH

3431'

17. NO. OF ACRES ASSIGNED
TO THIS WELL

320

20. ROTARY OR CABLE TOOLS

Rotary

21. ELEVATIONS (Show whether DF, RT, GR, etc.)

6548' GL

DRILLING OPERATIONS AUTHORIZED ARE
SUBJECT TO COMPLIANCE WITH ATTACHED

22. APPROX. DATE WORK WILL START*

May 15, 1989

23.

PROPOSED CASING AND CEMENTING PROGRAM

This action is subject to technical and
procedural review pursuant to 43 CFR 3165.3
and appeal pursuant to 43 CFR 3165.4.

SIZE OF HOLE	SIZE OF CASING	WEIGHT PER FOOT	SETTING DEPTH	QUANTITY OF CEMENT
12 1/4"	9 5/8"	36#	300'	207 cuft. to circulate
8 3/4"	7"	23#	3120'	781 cuft. to circulate
6 1/4"	5 1/2"	17#	3020' - 3431'	39 cuft. to circulate

Propose to spud in the San Jose formation. Will drill a 12 1/4" hole to a TD of 300'. Surface casing will be run and cemented with cement returns to surface. WOC 12 hours. Pressure test to 600 psi/30 mins. Drill an 8 3/4" hole with fresh water mud to a TD of 3120'. No abnormal pressures or poisonous gases are anticipated. Run and cement intermediate casing with cement returns to surface. WOC 12 hours. Test to 1500 psi/30 mins. Drill a 6 1/4" hole through the Fruitland coals with water and air. Run a 5 1/2" liner. The liner may or may not be cemented, depending on the wells natural producing ability.

Surface is BLM

IN ABOVE SPACE DESCRIBE PROPOSED PROGRAM: If proposal is to deepen or plug back, give data on present productive zone and proposed new productive zone. If proposal is to drill or deepen directionally, give pertinent data on subsurface locations and measured and true vertical depths. Give blowout preventer program, if any.

24.

SIGNED

William F. Clark

TITLE

Operations Manager

DATE

May 10, 1989

(This space for Federal or State office use)

PERMIT NO.

APPROVAL DATE

APPROVED BY

TITLE

CONDITIONS OF APPROVAL, IF ANY:

APPROVED
AS AMENDEDJUL 07 1989
AREA MANAGER

*See Instructions On Reverse Side

Submit to Appropriate
District Office
State Lease - 4 copies
Fee Lease - 3 copies

State of New Mexico
Energy, Minerals and Natural Resources Department

Form C-102
Revised 1-1-89

OIL CONSERVATION DIVISION

P.O. Box 2088
Santa Fe, New Mexico 87504-2088

DISTRICT I
P.O. Box 1980, Hobbs, NM 88240

DISTRICT II
P.O. Drawer DD, Artesia, NM 88210

DISTRICT III
1000 Rio Brazos Rd., Aztec, NM 87410

WELL LOCATION AND ACREAGE DEDICATION PLAT

All Distances must be from the outer boundaries of the section

Operator Blackwood & Nichols Co., LTD.			Lease Northeast Blanco Unit		Well No. 454
Unit Letter A	Section 33	Township 31 North	Range 7 West	County NMNM San Juan	
Actual Footage Location of Well: 1010 feet from the North line and 1310 feet from the East line					
Ground level Elev. 6548	Producing Formation Fruitland Coal		Pool Basin Fruitland Coal	Dedicated Acreage: 320 Acres	

1. Outline the acreage dedicated to the subject well by colored pencil or hatchure marks on the plat below.

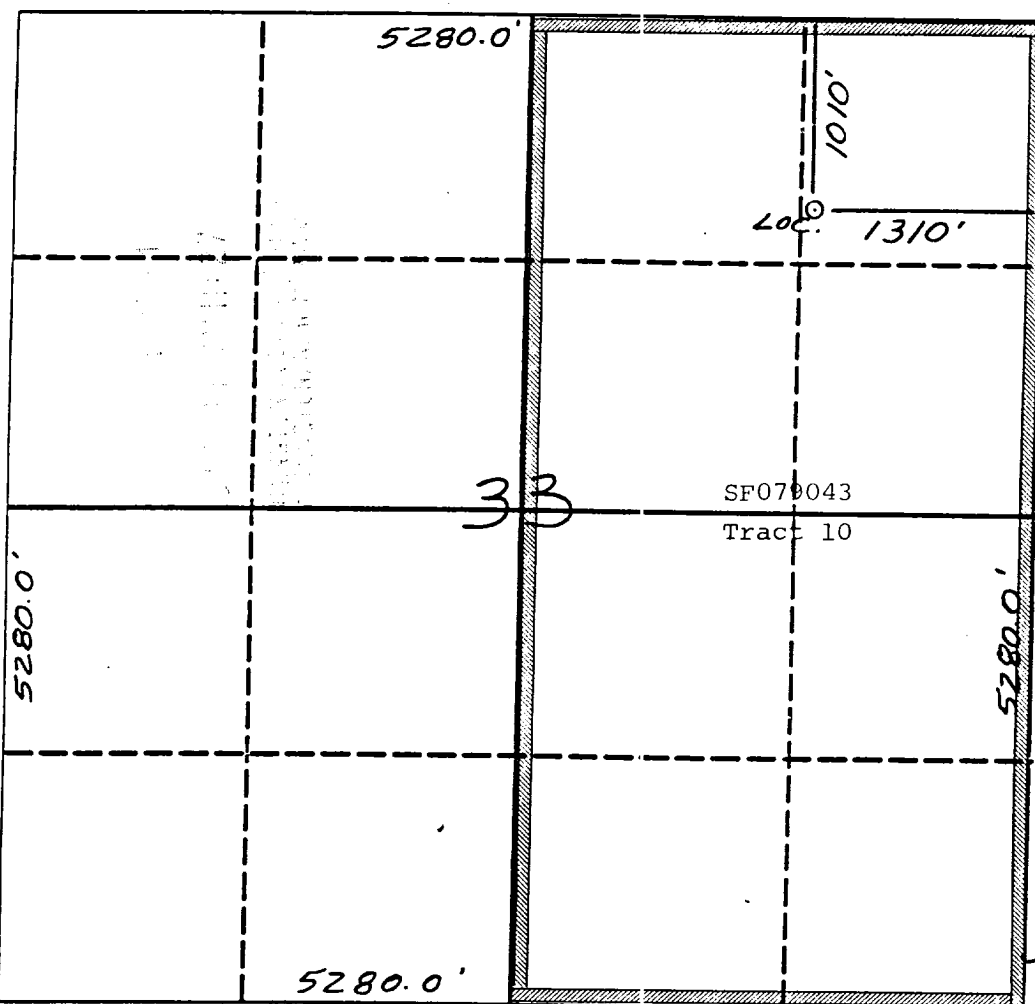
2. If more than one lease is dedicated to the well, outline each and identify the ownership thereof (both as to working interest and royalty).

3. If more than one lease of different ownership is dedicated to the well, have the interest of all owners been consolidated by communitization, unitization, force-pooling, etc.?

☐ Yes ☐ No If answer is "yes" type of consolidation N/A

If answer is "no" list the owners and tract descriptions which have actually been consolidated. (Use reverse side of this form if necessary.)

No allowable will be assigned to the well until all interests have been consolidated (by communitization, unitization, forced-pooling, or otherwise) or until a non-standard unit, eliminating such interest, has been approved by the Division.



OPERATOR CERTIFICATION

I hereby certify that the information contained herein is true and complete to the best of my knowledge and belief.

Signature
William F. Clark

Printed Name
William F. Clark

Position
Operations Manager

Company
Blackwood & Nichols Co.

Date
May 10, 1989

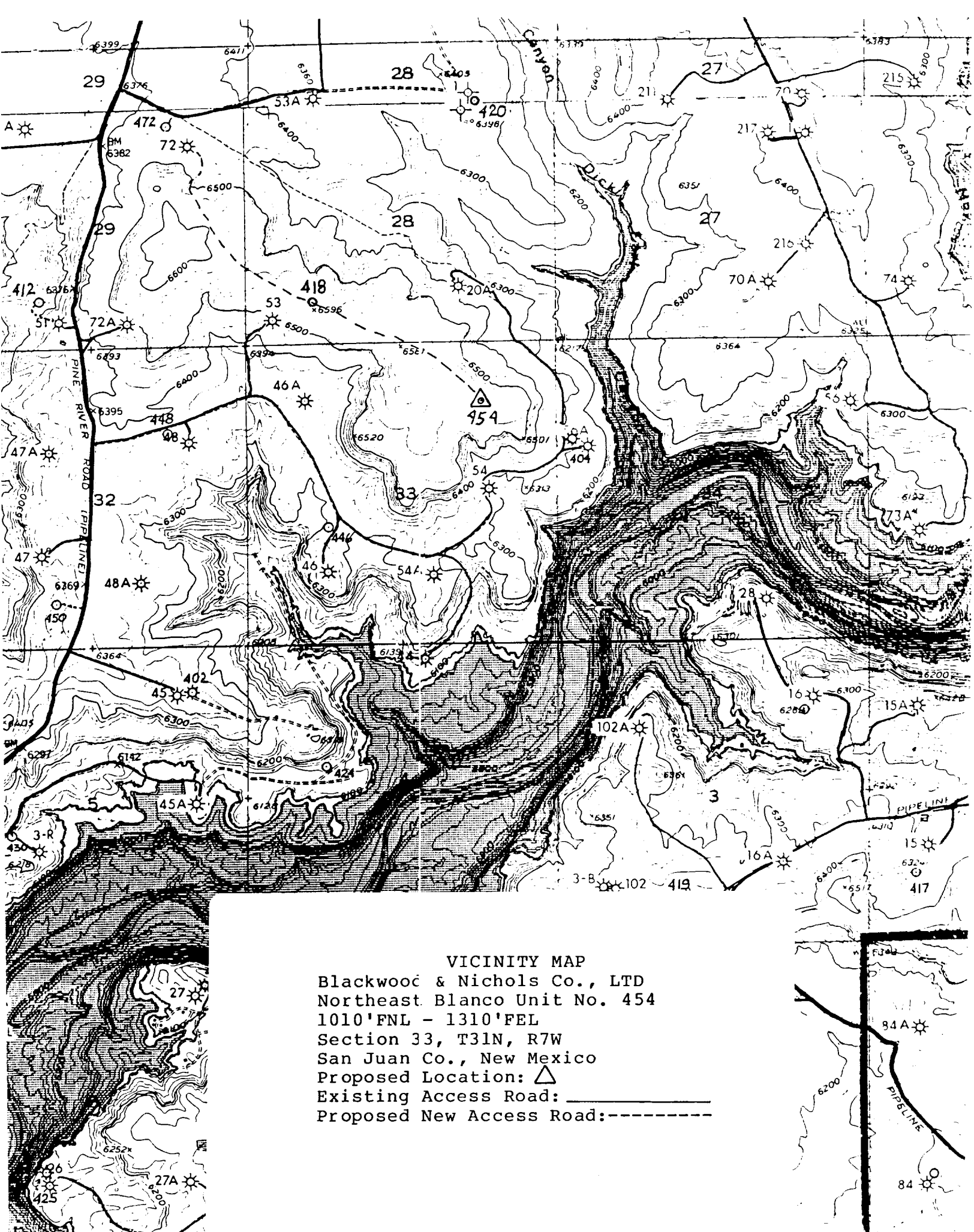
SURVEYOR CERTIFICATION

I hereby certify that the well location shown on this plat was plotted from field notes of actual surveys made by me or under my supervision, and that the same is true and correct to the best of my knowledge and belief.


Date Surveyed
4-15-89

Signature & Seal of Professional Surveyor
Ned C. Edwards

Certificate No.
6857



VICINITY MAP

Blackwood & Nichols Co., LTD
 Northeast Blanco Unit No. 454
 1010'FNL - 1310'FEL
 Section 33, T31N, R7W
 San Juan Co., New Mexico
 Proposed Location: 
 Existing Access Road: _____
 Proposed New Access Road:-----