

UNITED STATES
DEPARTMENT OF THE INTERIOR
GEOLOGICAL SURVEY

30-045-27448

APPLICATION FOR PERMIT TO DRILL, DEEPEN, OR PLUG BACK

1a. TYPE OF WORK

DRILL ☒DEEPEN ☐PLUG BACK ☐

b. TYPE OF WELL

OIL
WELL ☐GAS
WELL ☒OTHER ☐SINGLE
ZONE ☒MULTIPLE
ZONE ☐

2. NAME OF OPERATOR

Blackwood & Nichols Co., Ltd.

3. ADDRESS OF OPERATOR

P.O.Box 1237, Durango, Colorado, 81302-1237

4. LOCATION OF WELL (Report location clearly and in accordance with any State requirements.)

At surface

2505' FNL - 1810' FEL

At proposed prod. zone

Same

14. DISTANCE IN MILES AND DIRECTION FROM NEAREST TOWN OR POST OFFICE*

16 1/2 miles NE of Blanco, New Mexico

15. DISTANCE FROM PROPOSED*

LOCATION TO NEAREST
PROPERTY OR LEASE LINE, FT.
(Also to nearest drlg. unit line, if any)

490'

18. DISTANCE FROM PROPOSED LOCATION*

TO NEAREST WELL, DRILLING, COMPLETED,
OR APPLIED FOR, ON THIS LEASE, FT.

2400'

16. NO. OF ACRES IN LEASE

320

19. PROPOSED DEPTH

3530'

17. NO. OF ACRES ASSIGNED
TO THIS WELL

320

20. ROTARY OR CABLE TOOLS

Rotary

21. ELEVATIONS (Show whether DF, RT, GR, etc.)

6490' GL

22. APPROX. DATE WORK WILL START*

August 1, 1989

DRILLING OPERATIONS WILL BE CONDUCTED
SUBJECT TO THE FOLLOWING ATTACHED
"GENERAL REQUIREMENTS"

PROPOSED CASING AND CEMENTING PROGRAM

This action is subject to technical and
procedural review pursuant to 43 CFR 3165.3
and appeal pursuant to 43 CFR 3165.4.

SIZE OF HOLE	SIZE OF CASING	WEIGHT PER FOOT	SETTING DEPTH	
12 1/4"	9 5/8"	36 #	600'	378 cuft to circulate
7 7/8"	5 1/2"	17 #	3530'	1074 cuft to circulate
DV tool 200' above top coal				

Propose to spud in the San Jose formation. Will drill a 12 1/4" hole to a TD of 600'. Run and cement surface casing with cement returns to surface. WOC 12 hours. Test to 600 psi. Drill a 7 7/8" hole to a TD of 3530' using fresh water mud. No poisonous gas is anticipated. Weighted mud will be used to drill the Fruitland Coals. Induction and Density/Nuetron logs will be run at TD. Production casing will be run and cemented in two stages, with cement returns to surface. WOC 12 hours. Test to 1500 psi. A cased hole correlation and cement bond log will be run. The Fruitland Coals will be perforated and fraced with a fresh water based gel fluid.

This APD requests a gas pipeline ROW to follow the proposed access road from the proposed location to a tie in point on the NEBU # 42 location.

IN ABOVE SPACE DESCRIBE PROPOSED PROGRAM: If proposal is to deepen or plug back, give data on present productive zone and proposed new productive zone. If proposal is to drill or deepen directionally, give pertinent data on subsurface locations and measured and true vertical depths. Give blowout preventer program, if any.

24.

SIGNED

TITLE Operations Manager

DATE

July 10, 1989

(This space for Federal or State office use)

PERMIT NO.

APPROVAL DATE

APPROVED
AS ALLIATED

APPROVED BY

TITLE

DATE

CONDITIONS OF APPROVAL, IF ANY:

*See Instructions On Reverse Side

AREA MANAGER

Submit to Appropriate
District Office
State Lease - 4 copies
Fee Lease - 3 copies

State of New Mexico
Energy, Minerals and Natural Resources Department

Form C-102
Revised 1-1-89

OIL CONSERVATION DIVISION

DISTRICT I
P.O. Box 1980, Hobbs, NM 88240

P.O. Box 2088

Santa Fe, New Mexico 87504-2088

DISTRICT II
P.O. Drawer DD, Artesia, NM 88210

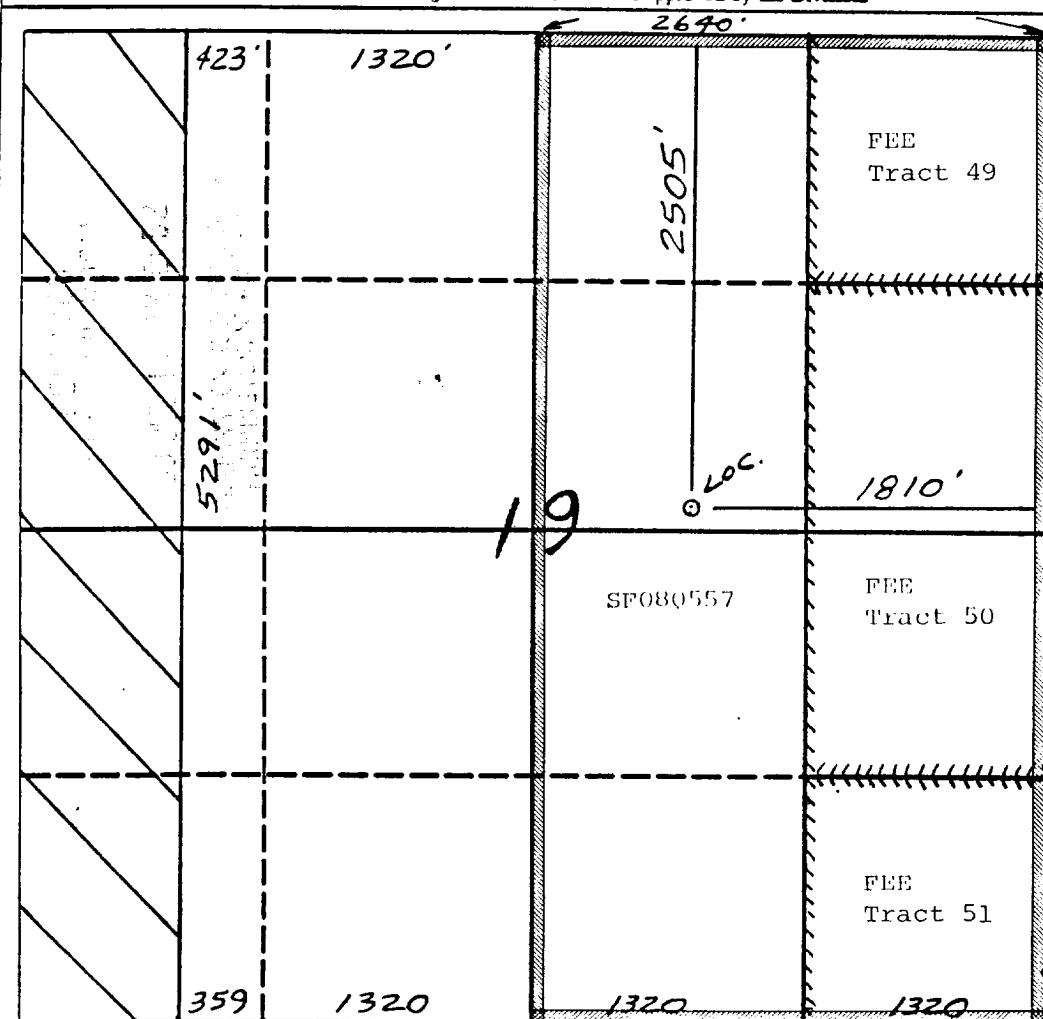
DISTRICT III
1000 Rio Brazos Rd., Aztec, NM 87410

WELL LOCATION AND ACREAGE DEDICATION PLAT

All Distances must be from the outer boundaries of the section

Operator Blackwood & Nichols Co., LTD.			Lease Northeast Blanco Unit		Well No. 459
Unit Letter G	Section 19	Township 31 North	Range 7 West	County San Juan	
Actual Footage Location of Well: 2505 feet from the North line and 1810 feet from the East line					
Ground level Elev. 6490'	Producing Formation Fruitland Coal		Pool Basin Fruitland Coal	Dedicated Acreage: 320 Acres	

- Outline the acreage dedicated to the subject well by colored pencil or hatchure marks on the plat below.
- If more than one lease is dedicated to the well, outline each and identify the ownership thereof (both as to working interest and royalty).
- If more than one lease of different ownership is dedicated to the well, have the interest of all owners been consolidated by communitization, unitization, force-pooling, etc.?
☒ Yes ☐ No If answer is "yes" type of consolidation Unitization
If answer is "no" list the owners and tract descriptions which have actually been consolidated. (Use reverse side of this form if necessary.)
No allowable will be assigned to the well until all interests have been consolidated (by communitization, unitization, forced-pooling, or otherwise) or until a non-standard unit, eliminating such interest, has been approved by the Division.



OPERATOR CERTIFICATION

I hereby certify that the information contained herein is true and complete to the best of my knowledge and belief.

Signature William F. Clark
Printed Name
William F. Clark
Position
Operations Manager
Company
Blackwood & Nichols Co., LLC
Date July 10, 1989

SURVEYOR CERTIFICATION

I hereby certify that the well location shown on this plat was plotted from field notes of actual surveys made by me or under my supervision, and that the same is true and correct to the best of my knowledge and belief.

Date Surveyed July 10, 1989
Signature and Seal of Professional Surveyor Neale C. Edwards

Certificate No. 6857

