

UNITED STATES
DEPARTMENT OF THE INTERIOR
BUREAU OF LAND MANAGEMENT

SUBMIT IN TRIPLICATE*
(Other instructions on
reverse side)

30-045-27454
Form approved.
Budget Bureau No. 1004-0136
Expires August 31, 1985

APPLICATION FOR PERMIT TO DRILL, DEEPEN, OR PLUG BACK

1a. TYPE OF WORK

DRILL ☒

DEEPEN ☐

PLUG BACK ☐

b. TYPE OF WELL

OIL
WELL ☐

GAS
WELL ☒

OTHER ☐

2. NAME OF OPERATOR

Union Texas Petroleum : Attn. Ken White

3. ADDRESS OF OPERATOR

P. O. BOX 2120, Houston, TX 77252

4. LOCATION OF WELL (Report location clearly and in accordance with applicable requirements)
At surface

1820' FNL & 740' FWL

At proposed prod. zone

14. DISTANCE IN MILES AND DIRECTION FROM NEAREST TOWN OR POST OFFICE*

13 Miles NE of Aztec, NM

10. DISTANCE FROM PROPOSED*

LOCATION TO NEAREST
PROPERTY OR LEASE LINE, FT. 740' from lease
(Also to nearest drig. unit line, if any)

16. NO. OF ACRES IN LEASE

2,446.60

17. NO. OF ACRES ASSIGNED

TO THIS WELL
N $\frac{1}{2}$ 266.77

18. DISTANCE FROM PROPOSED LOCATION*

TO NEAREST WELL, DRILLING, COMPLETED,
OR APPLIED FOR, ON THIS LEASE, FT. 170'

19. PROPOSED DEPTH

3640'

20. ROTARY OR CABLE TOOLS

Rotary

21. ELEVATIONS (Show whether DF, RT, GR, etc.)

6623' G.L. (graded)

22. APPROX. DATE WORK WILL START*

March 15, 1989

23.

PROPOSED CASING AND CEMENTING PROGRAM

SIZE OF HOLE	SIZE OF CASING	WEIGHT PER FOOT	SETTING DEPTH	QUANTITY OF CEMENT ATTACHED
12-1/4	9-5/8	32.3	350'	210 sx (248 cu. ft.)
8-3/4	7	23.0	3640'	380 sx (973 cu. ft.)

Union Texas Petroleum wishes to advise we intend to drill a 12-1/4" hole with mud to 350' and set. 9-3/5", 32.3#, H-40, ST&C csg to 350', cementing to surface with 210 sx (248 cu. ft.) C1 "B" with 2% CaCl2 and 1/4# flocele/sx. Wait on cement 12 hours.

Nipple up, test BOP. Drill 8-3/4" hole with mud out of surface to 3640'. Set 7" 23#, N-80, LT&C csg to 3640', cementing to surface with 280 sx (248 cu. ft.) 65/35 POZ with 12% gel and 12-1/4# gilsonite/sx, tailed by 100 sx (157 cu. ft.) 50/50 POZ with 4% gel and 6-1/4# gilsonite/sx and 1/4# salt s/x

IN ABOVE SPACE DESCRIBE PROPOSED PROGRAM. If proposal is to deepen or plug back, give data on present productive zone and proposed new productive zone. If proposal is to drill or deepen directionally, give pertinent data on subsurface locations and measured and true vertical depths. Give blowout preventer program, if any.

24.

SIGNED

TITLE Authorized Agent

DATE 1/6/89

(This space for Federal or State office use)

PERMIT NO.

APPROVAL DATE

APPROVED BY

TITLE

DATE

CONDITIONS OF APPROVAL, IF ANY:

APPROVED
AS AMENDED

JUL 12 1989
AREA MANAGER

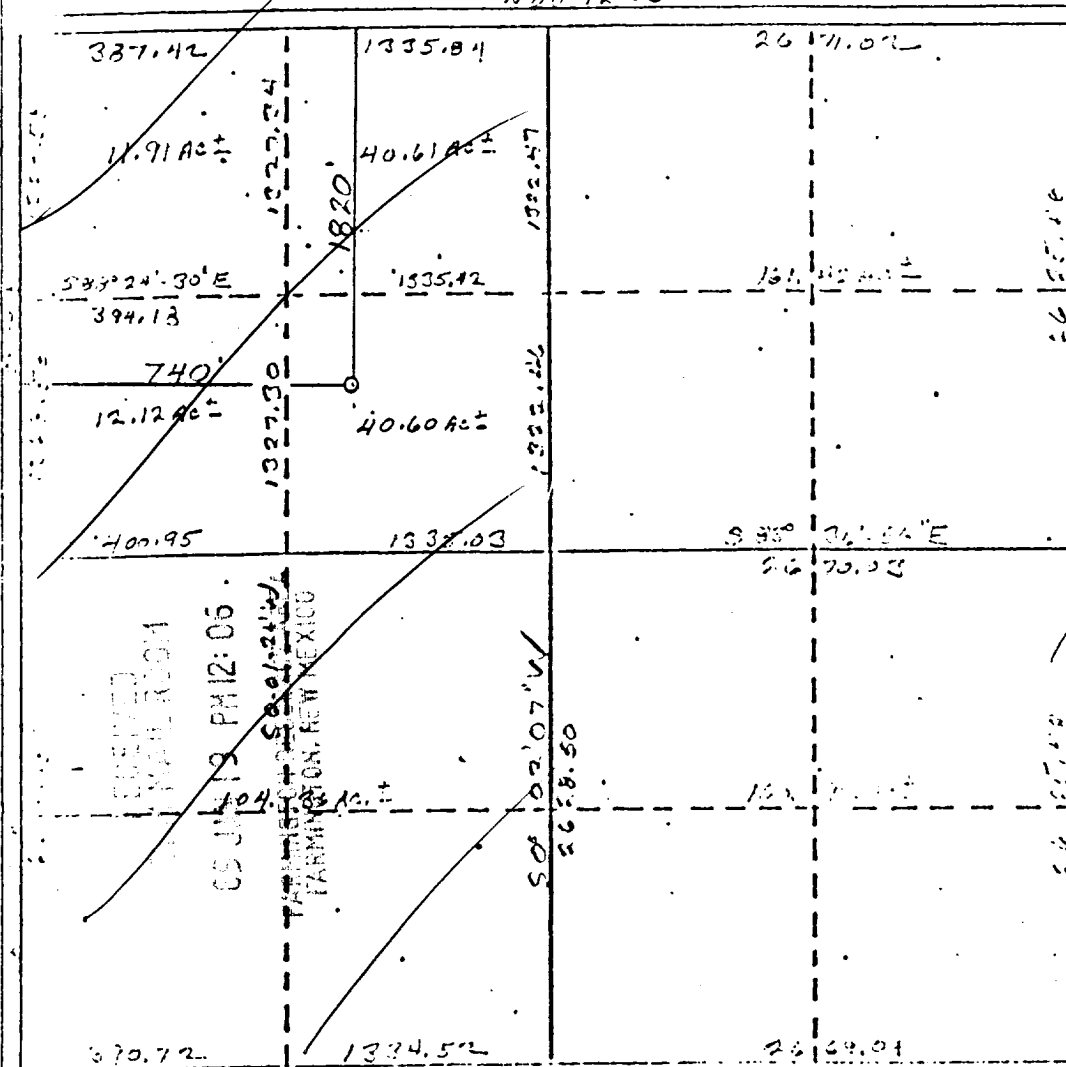
*See Instructions On Reverse Side

Form C-102
Supersedes C-101
Effective 1-1-64

Lessor		Lease		Well No.	
UNION TEXAS PETROLEUM		JOHNSTON FEDERAL		26	
Unit Letter	Section	Township	Range	County	
E F	7	31N	9W	San Juan	
Actual Postage Location of Wells					
1820	feet from the	North	line and	740	feet from the West line
Ground Level Elev.	Producing Formation	Pool	Dedicated Acreage:		
6623	Fruitland Coal	Basin Gas	N $\frac{1}{2}$ 320.00		Acres

- ☐ Yes ☐ No If answer is "yes," type of consolidation _____

No allowable will be assigned to the well until all interests have been consolidated (by communitization, unitization, forced-pooling, or otherwise) or until a non-standard unit, eliminating such interests, has been approved by the Commission.



I hereby certify that the information contained herein is true and complete to the best of my knowledge and belief.

Mark V. Smith

Nurse

Agent

Position

Trigon Engineering

Company

8-19-89

Date _____

I hereby certify that the well location
 shown on the plot is proper from field
 notes of actual surveys made by me or
 under my supervision, and that the same
 is true and correct to the best of my
 knowledge and belief.

Date Surveyed _____

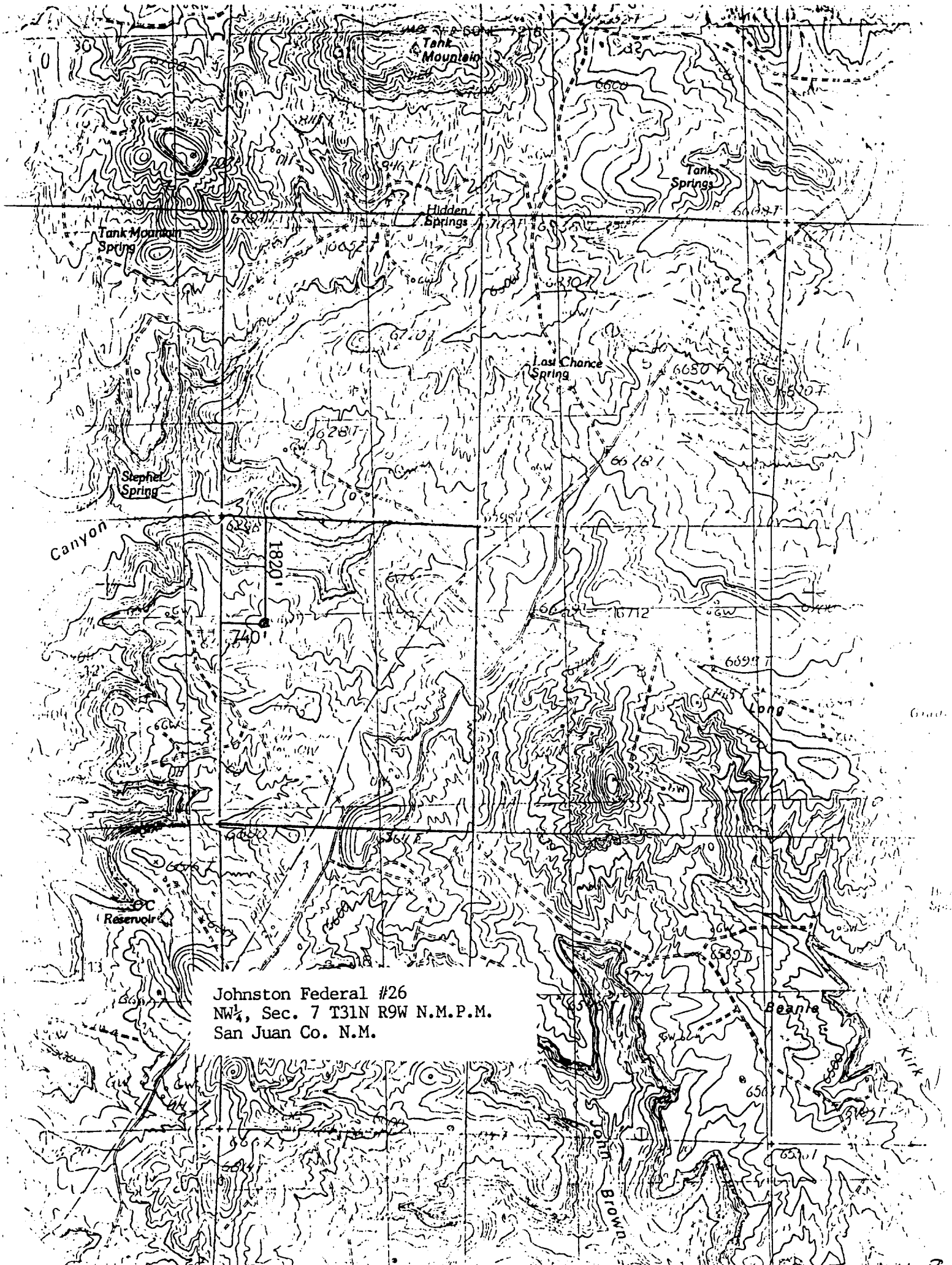
October 18, 1988

Registered Professional Engineer
and/or Land Surveyor

Cecil B. Tullis

Continental Div.

'9672



Johnston Federal #26
NW 1/4, Sec. 7 T31N R9W N.M.P.M.
San Juan Co. N.M.