

UNITED STATES  
DEPARTMENT OF THE INTERIOR  
BUREAU OF LAND MANAGEMENT

APPLICATION FOR PERMIT TO DRILL, DEEPEN, OR PLUG BACK

1a. TYPE OF WORK

DRILL ☒

DEEPEN ☐

PLUG BACK ☐

b. TYPE OF WELL

OIL  
WELL ☐

GAS  
WELL ☒

OTHER

2. NAME OF OPERATOR

Blackwood & Nichols Co., Ltd.

3. ADDRESS OF OPERATOR

P. O. Box 1237, Durango CO 81302

4. LOCATION OF WELL (Report location clearly and in accordance with any State requirements.)\*  
At surface

At proposed prod. zone 1790' FSL, 2510' FWL

14. DISTANCE IN MILES AND DIRECTION FROM NEAREST TOWN OR POST OFFICE\*

18 miles SE of Ignacio, Colorado

10. DISTANCE FROM PROPOSED\*

LOCATION TO NEAREST  
PROPERTY OR LEASE LINE, FT.  
(Also to nearest drlg. unit line, if any)

2510'

16. NO. OF ACRES IN LEASE

2040

17. NO. OF ACRES ASSIGNED  
TO THIS WELL

320

18. DISTANCE FROM PROPOSED LOCATION\*

TO NEAREST WELL, DRILLING, COMPLETED,  
OR APPLIED FOR, ON THIS LEASE, FT.

3062'

19. PROPOSED DEPTH

3120'

20. ROTARY OR CABLE TOOLS

Rotary

21. ELEVATIONS (Show whether DF, RT, GR, etc.)

DRILLING OPERATIONS AUTHORIZED ARE

6440' GL

22. APPROX. DATE WORK WILL START\*

November 30, 1989

23. SUBJECT TO COMPLIANCE WITH ATTACHED

"GENERAL REQUIREMENTS",

PROPOSED CASING AND CEMENTING PROGRAM

This action is subject to technical and  
procedural review pursuant to 43 CFR 3165.3  
and appeal pursuant to 43 CFR 3165.4.  
QUANTITY OF CEMENT

SIZE OF HOLE	SIZE OF CASING	WEIGHT PER FOOT	SETTING DEPTH
12-1/4"	9-5/8"	36#	300'
8-3/4"	7"	23#	2950'
6-1/4"	5-1/2 or 4-1/2"	17#, 11.6#	2350'-3120'

207 cf/circulate to surface  
744 cf/circulate to surface  
30 cf/circulate to liner top

Propose to spud in the San Jose formation. Will drill a 12-1/4" surface hole to a TD of 300'. Surface casing will be run and cemented with cement returns to surface. WOC 12 hours. Test to 600 psi/30 minutes. Drill an 8-3/4" hole to a TD of 2950' using fresh water mud. No poisonous gasses or abnormal pressures are anticipated. Run intermediate casing and cement with cement returns to surface. WOC 12 hours. Test to 1500 psi/30 minutes. Drill a 6-1/4" hole to a TD of 3120', using water and air. Run a mudlogging unit while drilling this interval. Run the production liner. A 4-1/2" liner will be cemented if the well's natural flow capacity indicates the need for fracture stimulation.

Surface ownership is Bureau of Land Management.

RECEIVED

OCT 19 1989

IN ABOVE SPACE DESCRIBE PROPOSED PROGRAM: If proposal is to deepen or plug back, give data on present productive zone and proposed new productive zone. If proposal is to drill or deepen directionally, give pertinent data on subsurface locations and measured and true vertical depths. Give blowout preventer program, if any.

24.

SIGNED

William F. Clark

TITLE

Operations Manager

DATE

Sept 27, 1989

(This space for Federal or State office use)

PERMIT NO.

APPROVAL DATE

APPROVED BY

TITLE

CONDITIONS OF APPROVAL, IF ANY:

APPROVED  
As Amended  
OCT 17 1989  
AREA MANAGER

\*See Instructions On Reverse Side

# OIL CONSERVATION DIVISION

P.O. Box 2088  
Santa Fe, New Mexico 87504-2088

DISTRICT I  
P.O. Box 1980, Hobbs, NM 88240

DISTRICT II  
P.O. Drawer DD, Artesia, NM 88210

DISTRICT III  
1000 Rio Brazos Rd., Aztec, NM 87410

## WELL LOCATION AND ACREAGE DEDICATION PLAT

All Distances must be from the outer boundaries of the section

Operator <b>Blackwood &amp; Nichols Co., LTD.</b>		Lease <b>Northeast Blanco Unit</b>		Well No. <b>434</b>
Unit Letter <b>K</b>	Section <b>23</b>	Township <b>31 North</b>	Range <b>7 West</b>	County <b>San Juan</b>
Actual Footage Location of Well: <b>1790</b> feet from the <b>South</b> line and <b>2510</b> feet from the <b>West</b> line				
Ground level Elev. <b>6440'</b>	Producing Formation <b>Fruitland Coal</b>	Pool <b>Basin Fruitland Coal</b>	Dedicated Acreage: <b>320.00</b> Acres	

1. Outline the acreage dedicated to the subject well by colored pencil or hatchure marks on the plat below.

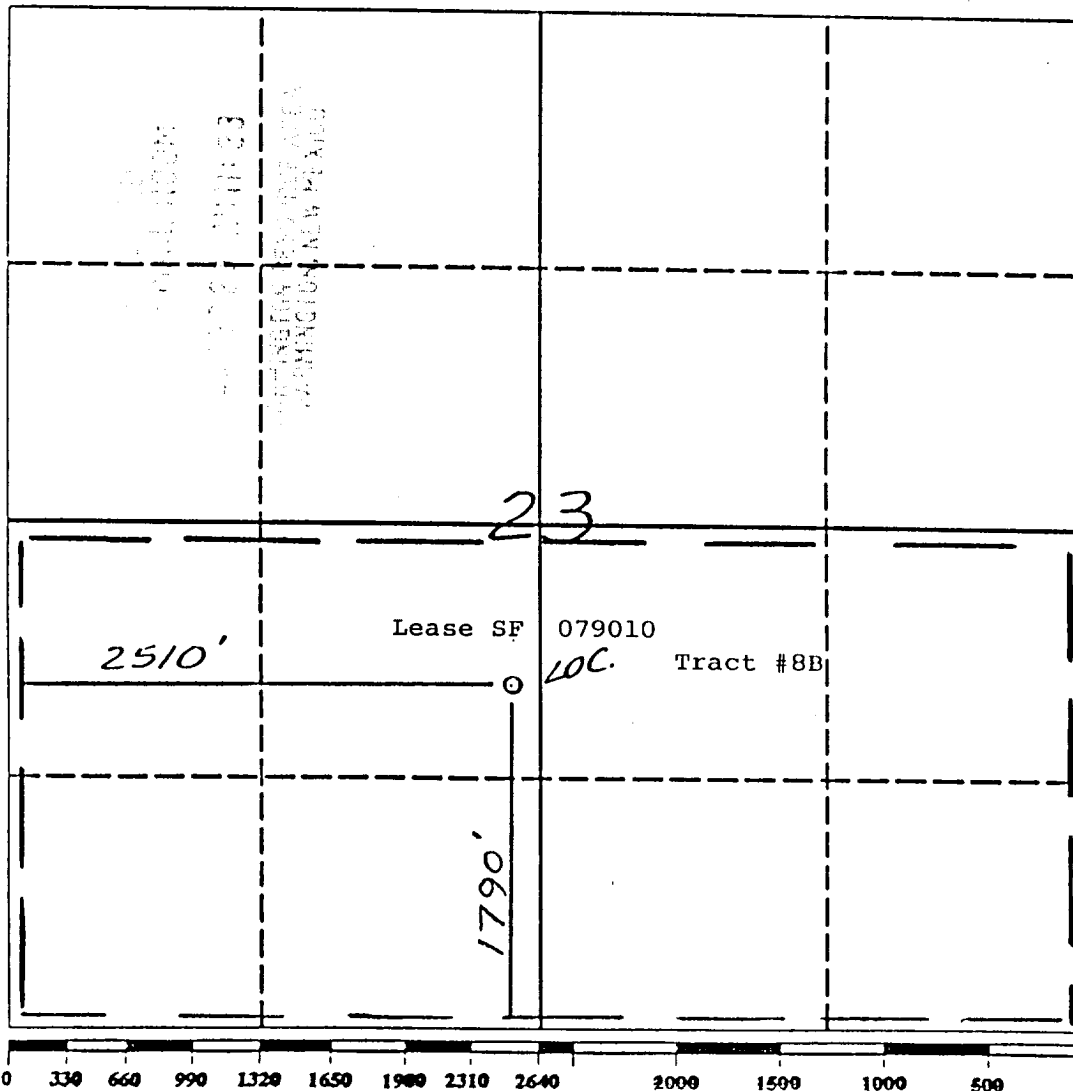
2. If more than one lease is dedicated to the well, outline each and identify the ownership thereof (both as to working interest and royalty).

3. If more than one lease of different ownership is dedicated to the well, have the interest of all owners been consolidated by communitization, unitization, force-pooling, etc.?

☐ Yes ☐ No If answer is "yes" type of consolidation **N/A**

If answer is "no" list the owners and tract descriptions which have actually been consolidated. (Use reverse side of this form if necessary.)

No allowable will be assigned to the well until all interests have been consolidated (by communitization, unitization, forced-pooling, or otherwise) or until a non-standard unit, eliminating such interest, has been approved by the Division.



### OPERATOR CERTIFICATION

I hereby certify that the information contained herein is true and complete to the best of my knowledge and belief.

*William F. Clark*  
Signature

William F. Clark

Printed Name

Operations Manager

Position

Blackwood & Nichols

Company

August 9, 1989

Date

### SURVEYOR CERTIFICATION

I hereby certify that the well location shown on this plat was plotted from field notes of actual surveys made by me or under my supervision, and that the same is true and correct to the best of my knowledge and belief.

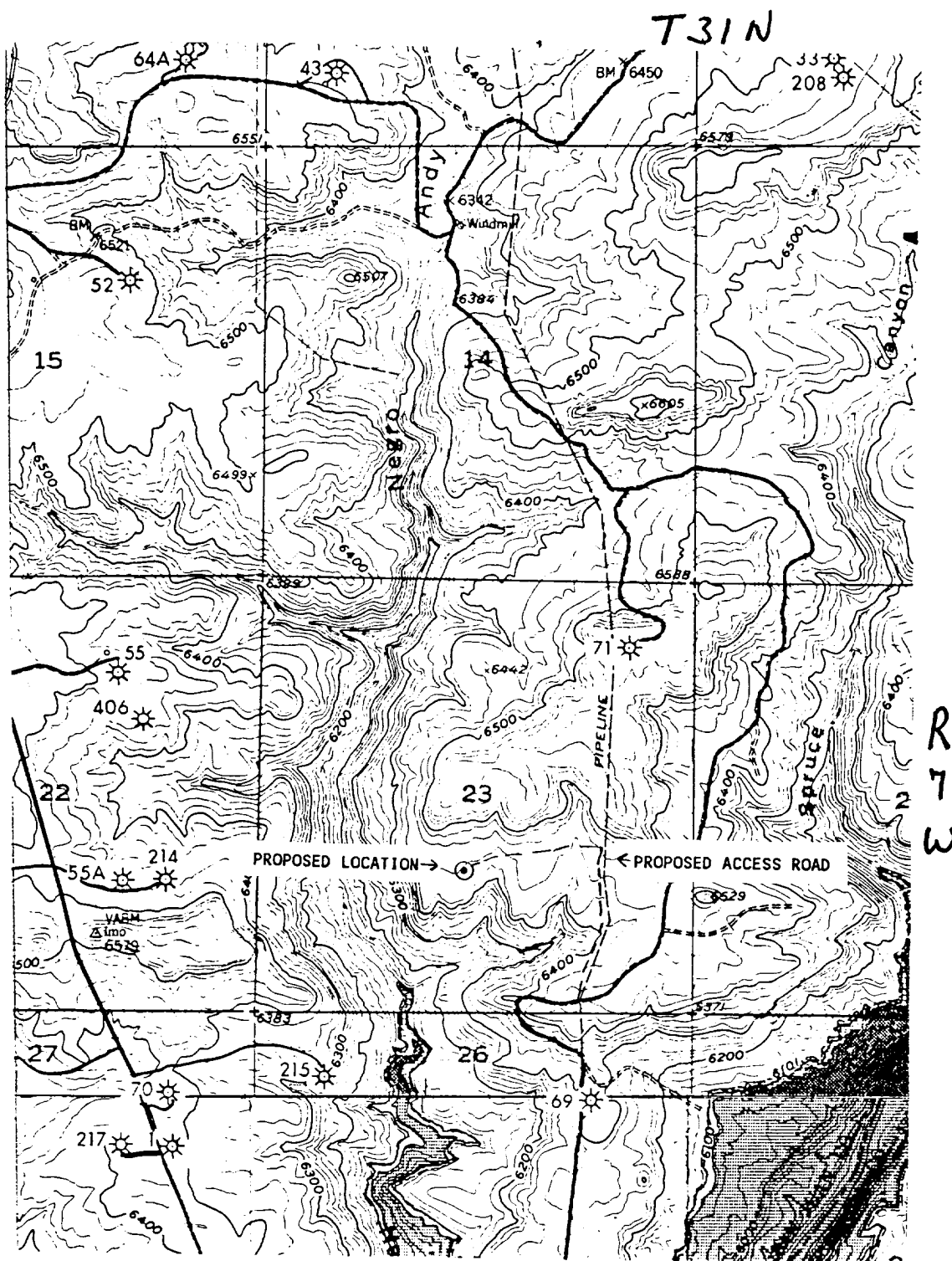
*Neale C. Edwards*  
Date Surveyed

Signature & Seal of Professional Surveyor

*Neale C. Edwards*

Certificate No.

6857



# VICINITY MAP

Blackwood & Nichols Co., Ltd.  
 Northeast Blanco Unit No. 434  
 1790' FSL, 2510' FWL  
 Section 23, T31N, R7W  
 San Juan County, New Mexico