

UNITED STATES
DEPARTMENT OF THE INTERIOR
BUREAU OF LAND MANAGEMENT

SUBMIT IN TRIPPLICATE*
(Other instructions on re-
verse side)

Budget Bureau No. 1004-0135
Expires August 31, 1985

5. LEASE DESIGNATION AND SERIAL NO

SF-078996

6. IF INDIAN, ALLOTTEE OR TRIBE NAME

SUNDRY NOTICES AND REPORTS ON WELLS

(Do not use this form for proposals to drill or to deepen or plug back to a different reservoir.
Use "APPLICATION FOR PERMIT—" for such proposals.)

1. ☐ OIL WELL ☐ GAS WELL ☒ OTHER

2. NAME OF OPERATOR

Northwest Pipeline Corporation

3. ADDRESS OF OPERATOR

3539 East 30th Street - Farmington, NM 87402

4. LOCATION OF WELL (Report location clearly and in accordance with any State requirements.*
See also space 17 below.)
At surface

500' FSL & 880' FEL SE/SE

7. UNIT AGREEMENT NAME

San Juan 32-7 Unit

8. FARM OR LEASE NAME

San Juan 32-7 Unit

9. WELL NO.

#201

10. FIELD AND POOL, OR WILDCAT

Blanco Mesa Verde

11. SEC., T., R., M., OR BLK. AND
SURVEY OR AREA

Sec. 7P, T31N, R7W

14. PERMIT NO.

API #30-045-27553

15. ELEVATIONS (Show whether DF, RT, GR, etc.)

6481' GR

12. COUNTY OR PARISH

San Juan

13. STATE

NM

16. Check Appropriate Box To Indicate Nature of Notice, Report, or Other Data

NOTICE OF INTENTION TO:

TEST WATER SHUT-OFF ☐

FRACTURE TREAT ☐

SHOOT OR ACIDIZE ☐

REPAIR WELL ☐

(Other)

PULL OR ALTER CASING ☐

MULTIPLE COMPLETE ☐

ABANDON* ☐

CHANGE PLANS ☐

Deepen ☒

SUBSEQUENT REPORT OF:

WATER SHUT-OFF ☐

FRACTURE TREATMENT ☐

SHOOTING OR ACIDIZING ☐

(Other)

REPAIRING WELL ☐

ALTERING CASING ☐

ABANDONMENT* ☐

(NOTE: Report results of multiple completion on Well
Completion or Recompletion Report and Log form.)

17. DESCRIBE PROPOSED OR COMPLETED OPERATIONS (Clearly state all pertinent details, and give pertinent dates, including estimated date of starting any proposed work. If well is directionally drilled, give subsurface locations and measured and true vertical depths for all markers and zones pertinent to this work.) *

Northwest Pipeline plans to deepen the subject well to the Mesa Verde formation as per the attached procedure.

The proration unit will remain the same for both the Mesa Verde and Fruitland formations. Ftld order #R-9099, MV order #R-1066.

The location remains "orthodox" due to the unusual proration unit boundaries.

RECEIVED
SEP 27 1990
OIL CON. DIV.
DIST. 3

18. I hereby certify that the foregoing is true and correct

SIGNED

Mike Turnbaugh
Mike Turnbaugh

TITLE Production Superintendent

DATE 9-12-90

(This space for Federal or State office use)

APPROVED BY

CONDITIONS OF APPROVAL, IF ANY:

TITLE

APPROVED

SEP 24 1990
John Townsend
AREA MANAGER

*See Instructions on Reverse Side

Submit to Appropriate
District Office
State Lease - 4 copies
Fee Lease - 3 copies

State of New Mexico
Energy, Minerals and Natural Resources Department

Form C-102
Revised 1-1-89

OIL CONSERVATION DIVISION

DISTRICT I
P.O. Box 1980, Hobbs, NM 88240

P.O. Box 2088

Santa Fe, New Mexico 87504-2088

DISTRICT II
P.O. Drawer DD, Artesia, NM 88210

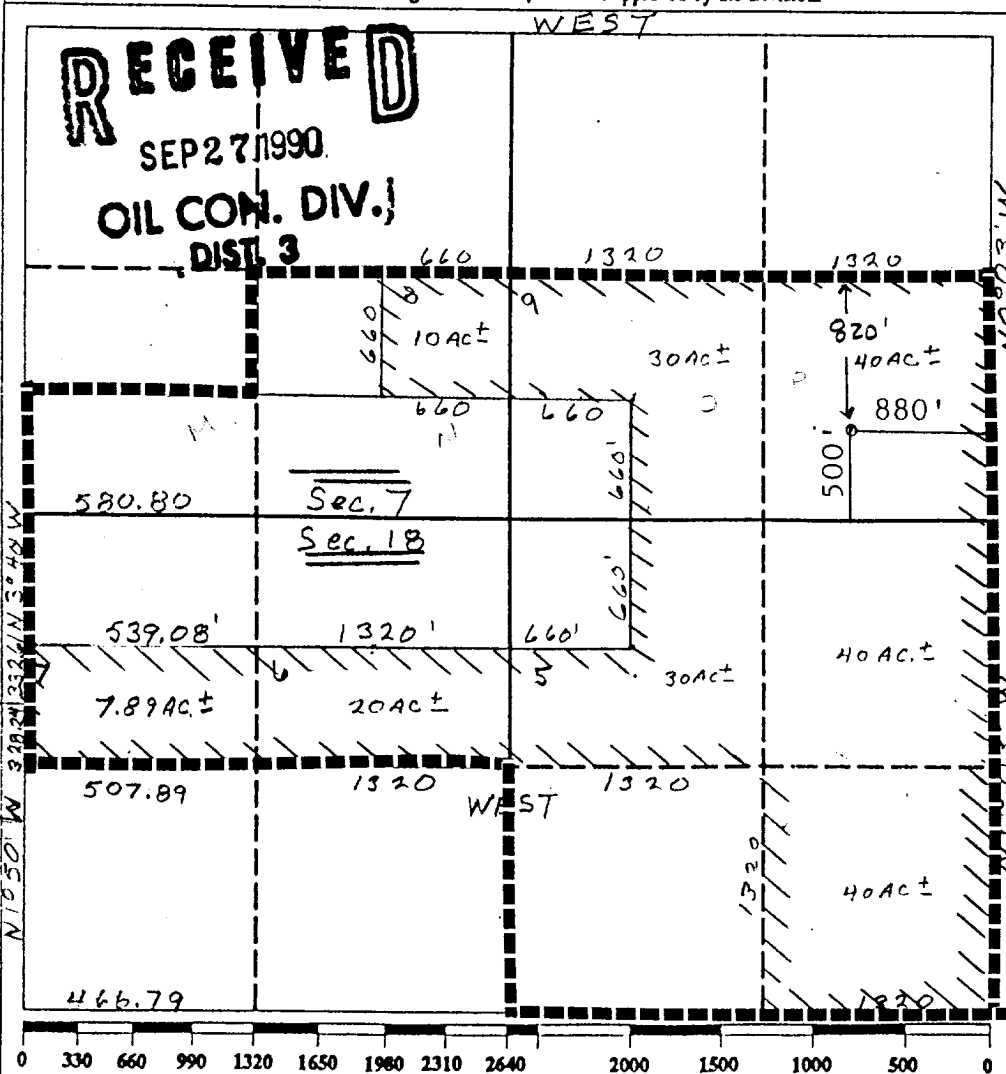
DISTRICT III
1000 Rio Brazos Rd., Aztec, NM 87410

WELL LOCATION AND ACREAGE DEDICATION PLAT

All Distances must be from the outer boundaries of the section

Operator NORTHWEST PIPELINE CORP.			Lease SAN JUAN 32-7		Well No. 201
Unit Letter P	Section 7	Township 31N	Range 7W	County San Juan	
Actual Footage Location of Well: 500 feet from the South line and 880 feet from the East line					
Ground level Elev. 6481	Producing Formation MESA VERDE		Pool BLANCO MESA VERDE	Dedicated Acreage: 325.68 Acres	
Fruitland Coal Basin Fruitland Coal					

- Outline the acreage dedicated to the subject well by colored pencil or hatchure marks on the plat below.
- If more than one lease is dedicated to the well, outline each and identify the ownership thereof (both as to working interest and royalty).
- If more than one lease of different ownership is dedicated to the well, have the interest of all owners been consolidated by communitization, unitization, force-pooling, etc?
☒ Yes ☐ No If answer is "yes" type of consolidation **UNITIZED**
If answer is "no" list the owners and tract descriptions which have actually been consolidated. (Use reverse side of this form if necessary.)
No allowable will be assigned to the well until all interests have been consolidated (by communitization, unitization, forced-pooling, or otherwise) or until a non-standard unit, eliminating such interest, has been approved by the Division.



OPERATOR CERTIFICATION I hereby certify that the information contained herein is true and complete to the best of my knowledge and belief.	
Signature <i>Mike Turnbaugh</i>	Printed Name Mike Turnbaugh
Position Prod. Supt.	
Company Northwest Pipeline Corp.	
Date 11-06-89	
SURVEYOR CERTIFICATION I hereby certify that the well location shown on this plat was plotted from field notes of actual surveys made by me or under my supervision, and that the same is true and correct to the best of my knowledge and belief.	
Date Surveyed November 13, 1989	
Signature and Seal <i>[Signature]</i> 9672	
Certificate No. 9672	

WELLNAME: San Juan 32-7 Unit #201 MV

FIELD: Ignacio Blanco Mesa Verde

LOCATION: SE/4 SE/4 Sec. 7 T31N R7W

ELEVATION: 6481'GR

COUNTY: ~~La Plata~~ County STATE: ~~Colorado~~
San Juan N.Mex.

TOTAL DEPTH: 5950'

DATE COMPLETED: Not Completed

CASING RECORD	CASING SIZE	WT. & GRADE	DEPTH SET	CEMENT	TOP CEMENT
Surface	9-5/8"	32.40 H-40	533'	273 sx	Surface
Intermediate	7"	23# J-55	3209'	450 sx	Surface
Open Hole	N/A	N/A	3362'	N/A	N/A

WELLHEAD EQUIPMENT Casinghead: 10" 900 OCT C-20 Tubinghead: 10" 900 X 6" 900
Bonnett: 6" 900 X 2-7/8" EUE

TUBING EQUIPMENT: None

FORMATION TOPS	Depth	Formation	Depth
Ojo Alamo	2228'	Cliff House	5303'
Kirtland	2328'	Menefee	5404'
Fruitland	3000'	Point Lookout	5645'
Pictured Cliffs	3258'		
Lewis	3536'		

LOGGING RECORD: Cased Hole Neutron Log, DIGL, CDL/SNL, Spectral GR, Full Wave Sonic

PERFORATIONS: None

STIMULATION: None

PRODUCTION HISTORY: None

RECOMMENDED PROCEDURE

1. MOL & RU Drilling Rig
2. Hold safety meeting.
3. Pick up 6-1/4" drill bit and Mist drill to 5950'
4. Log open hole with DIL/GR & CDL/SNL logs.
5. Run 4-1/2" liner with CEMENT NOSE GUIDE SHOE & FLAPPER FLOAT COLLAR. Cement with 270 sx (454 cu.ft.) of Class "B" with 4% gel, 6-1/4# gilsonite/sk & 0.6% halad 9
6. WOC for 18 hours.
7. PU 3-7/8" bit on 2-3/8" tubing and CO to PBTD.
8. Pressure test casing to 3500#.

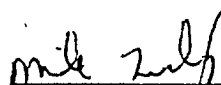
RECOMMENDED PROCEDURE (cont'd)

9. Spot 500 gallons of 7-1/2% HCL across interval to be perforated.
10. TOH and RU Perfortators.
11. Run GR/CCL and perforate Mesa Verde formation as determined by open hole logs.
12. Establish a rate (expect rate of 60 BPM @ 1990#) into perforations. Shut down and determine ISIP.
13. Drop balls in 1000 gallons of 7-1/2% HCL and ball off perforations if possible.
14. Run wireline junk basket and retrieve or knock off balls.
15. Frac well with 100,000# of 20/20 sand in treated water (0.5 gallons friction reducer/1000 gallons water) using the following schedule if pressure permits:

10,000 gallon Pad	(10,000 gallons)
20,000# 20/40 sand @ 1/2 ppg	(40,000 gallons)
40,000# 20/40 sand @ 1 ppg	(40,000 gallons)
40,000# 20/240 sand @ 2 ppg	(20,000 gallons)
6,600 gallon Flush	(6,600 gallons)

9 Tanks on location

16. Flush well to 100 feet above the top perforation.
17. Record SICP for one hour or until pressusre drops to zero.
18. CO with gas to TD and blow well with compressor until well quits making sand.
19. Land tubing at approximately 5650'.
20. ND BOP & NU Wellhead, pump out plug and gauge well up tubing.
21. Release Rig.


Mark McCallister
Sr. Engineer

WELLBORE DIAGRAM
SAN JUAN 32-7 UNIT #201 MV

WELLHEAD SPECIFICATIONS

Casinghead: 10"900 X 9-5/8"
OCT PROFILE C-22
Tubinghead: 10"900 X 6"900
RECTOR PROFILE

9-5/8" 32.30# @ 533'
w/ 273 sx TOC - Surface

FORMATION TOPS:

Ojo Alamo: 2228'
Kirtland: 2328'
Fruitland: 3000'
Pictured Cliffs: 3258'
Lewis: 3536'
Cliff House: 5303'
Menefee: 5404'
Point Lookout: 5645'

Estimated
Liner Top @ 3100'

7" 23# @ 3209'
w/ 450 sx TOC - Surface

Open Hole to 3362'

EST. STIMULATION:
100,000# sand in
Slick Water

4-1/2" 10 5# @ 5950'