

UNITED STATES
DEPARTMENT OF THE INTERIOR
GEOLOGICAL SURVEY

APPLICATION FOR PERMIT TO DRILL, DEEPEN, OR PLUG BACK

1a. TYPE OF WORK

DRILL ☒DEEPEN ☐PLUG BACK ☐

b. TYPE OF WELL

OIL
WELL ☐GAS
WELL ☒OTHER ☐SINGLE
ZONE ☒MULTIPLE
ZONE ☐

2. NAME OF OPERATOR

Blackwood & Nichols Co., LTD

3. ADDRESS OF OPERATOR

P.O. Box 1237, Durango, Colorado, 81302-1237

4. LOCATION OF WELL (Report location clearly and in accordance with any State requirements*)

At surface

1400' FNL - 960' FEL

At proposed prod. zone

Same

14. DISTANCE IN MILES AND DIRECTION FROM NEAREST TOWN OR POST OFFICE*

19 miles NE of Blanco, New Mexico

15. DISTANCE FROM PROPOSED*
LOCATION TO NEAREST
PROPERTY OR LEASE LINE, FT.
(Also to nearest drlg. unit line, if any)

960'

18. DISTANCE FROM PROPOSED LOCATION*
TO NEAREST WELL DRILLING COMPLETED,
OR APPLIED FOR, ON THIS LEASE, FT.

300'

16. NO. OF ACRES IN LEASE

2560.00

17. NO. OF ACRES ASSIGNED
TO THIS WELL

320

19. PROPOSED DEPTH

3284'

20. ROTARY OR CABLE TOOLS

Rotary

21. ELEVATIONS (Show whether DF, RT, GR, etc.)

6405' GL

22. APPROX. DATE WORK WILL START*

January 5, 1990

23. PROPOSED CASING AND CEMENTING PROGRAM

SIZE OF HOLE	SIZE OF CASING	WEIGHT PER FOOT	SETTING DEPTH	QUANTITY OF CEMENT
12 1/4"	9 5/8"	36#	300'	250 sxs. (295 cuft)
8 3/4"	7"	23#	2978'	555 sxs. (940 cuft)
6 1/4"	5 1/2"	17#	2878' - 3284'	30 sxs. (39 cuft)

Propose to spud in the San Jose formation. Drill a 12 1/4" hole to a TD of 300'. Run and cement surface casing, with cement returns to surface. WOC 12 hours. Test to 600 psi/30 mins. Drill an 8 3/4" hole to a TD of 2978' using fresh water mud. No poisonous gases or abnormal pressures are anticipated. Run and cement intermediate casing, with cement returns to surface. WOC 12 hours. Test to 1500 psi/ 30 mins. Drill the Fruitland coals with a 6 1/4" bit using air and water. Run a 5 1/2" liner. Liner will not be cemented if a natural flow is encountered. If no natural flow is encountered the liner will be cemented and the Fruitland coals will be perforated and fraced using a fresh water base gel fluid.

Surface is BLM

IN ABOVE SPACE DESCRIBE PROPOSED PROGRAM: If proposal is to deepen or plug back, give data on present production and proposed new productivity zone. If proposal is to drill or deepen directionally, give pertinent data on subsurface locations and measured and true vertical depths. Give blowout preventer program, if any.

24.

SIGNATURE William F. Clark TITLE Operations ManagerDATE 19 Dec '89

(This space for Federal or State office use)

PERMIT NO. _____

APPROVAL DATE _____

APPROVED BY _____

TITLE _____

CONDITIONS OF APPROVAL, IF ANY:

APPROVED
AS AMENDEDJAN 08 1990
AREA MANAGER

Hold C-109 until NEBU #216 is approved
converted to press. *See Instructions On Reverse Side
- with some well. (C)

RECEIVED

NOV 1961

OFFICE

NOV 1961

**NEW MEXICO OIL CONSERVATION COMMISSION
WELL LOCATION AND ACREAGE DEDICATION PLAT**

Form C-102
Supersedes C-128
Effective 1-1-65

All distances must be from the outer boundaries of the Section.

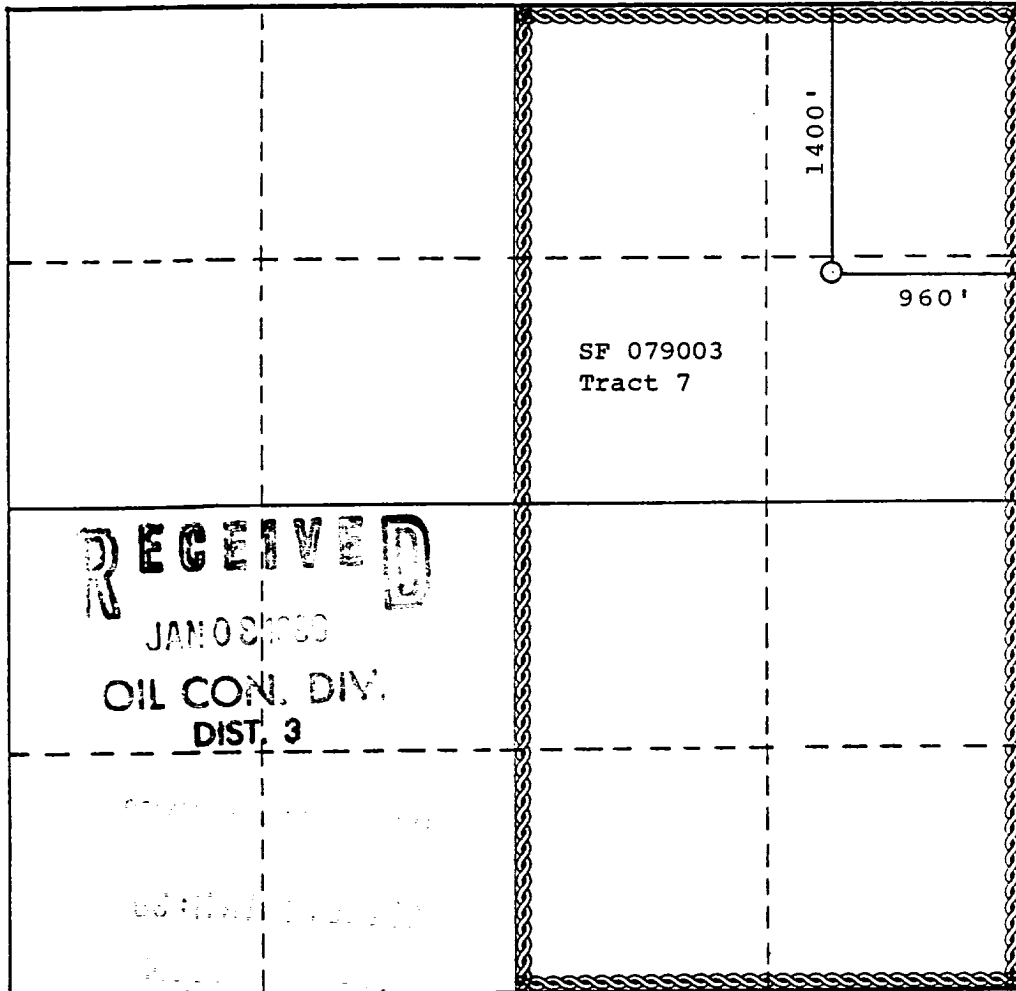
Operator BLACKWOOD & NICHOLS CO., LTD.			Lease NORTHEAST BLANCO UNIT		Well No. 470
Unit Letter H	Section 27	Township 31 North	Range 7 West	County San Juan County	
Actual Footage Location of Well: <div style="display: flex; justify-content: space-between; align-items: center;"> 1400 feet from the north line and 960 feet from the east line </div>					
Ground Level Elev: 6405 (U.G.)	Producing Formation Fruitland Coal	Pool Basin Fruitland Coal		Dedicated Acreage: 320 Acres	

1. Outline the acreage dedicated to the subject well by colored pencil or hachure marks on the plat below.
2. If more than one lease is dedicated to the well, outline each and identify the ownership thereof (both as to working interest and royalty).
3. If more than one lease of different ownership is dedicated to the well, have the interests of all owners been consolidated by communitization, unitization, force-pooling, etc?

☒ Yes ☐ No If answer is "yes," type of consolidation Unitization

If answer is "no," list the owners and tract descriptions which have actually been consolidated. (Use reverse side of this form if necessary.) _____

No allowable will be assigned to the well until all interests have been consolidated (by communitization, unitization, forced-pooling, or otherwise) or until a non-standard unit, eliminating such interests, has been approved by the Commission.



CERTIFICATION

I hereby certify that the information contained herein is true and complete to the best of my knowledge and belief.

William F. Clark

Name
William F. Clark

Position
Operations Manager

Company
Blackwood & Nichols Co.

Date
December 7, 1989

I hereby certify that the well location shown on this plat was plotted from field notes of actual surveys made by me or under my supervision, and that the same is true and correct to the best of my knowledge and belief.

Date Surveyed
November 9, 1989

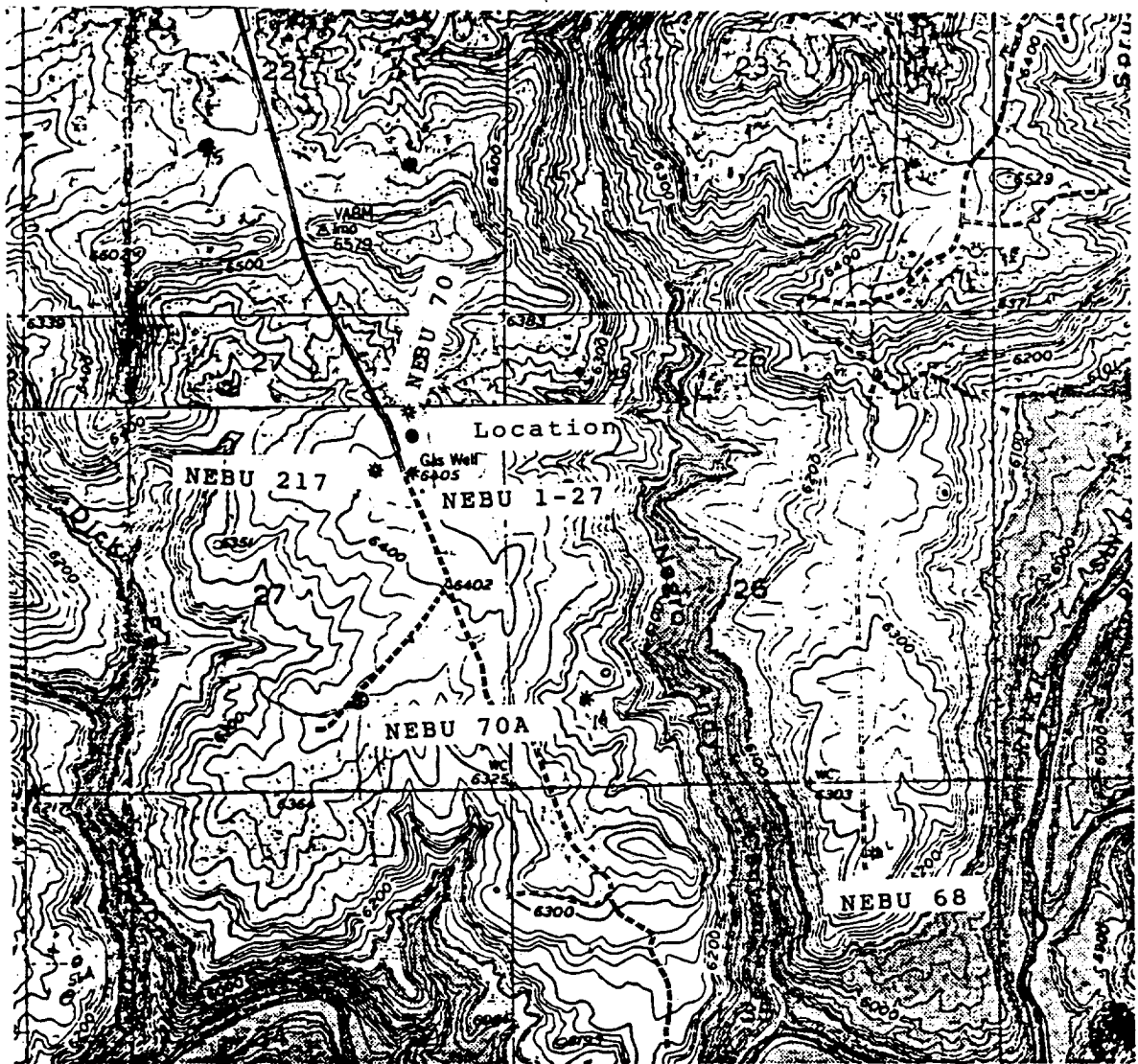
Registered Professional Engineer and/or Land Surveyor

Allison L. Kroeger
Allison L. Kroeger, PLS

Certificate No.

7922

0 330 660 990 1320 1650 1980 2310 2640 2000 1500 1000 500 0



BLACKWOOD & NICHOLS CO., LTD.

V I C I N I T Y M A P
NEBU 470 in Sec. 27, T. 31N., R. 7W.
N.M.P.M. - San Juan County, NM

Date: November, 1989

Scale: 1"=2000

KROEGER & ASSOC.
DURANGO, COLO.